

Get A Handle On Flies

(Continued from Page A27)

Jones will be looking at both old and new facilities and how producers can meet cows' performance needs by providing the right environment.

Tim Royer is president of Timber Tech, a consulting structural engineering company in Womels-

dorf. He has worked as a design engineer for 11 years and received his bachelor's in ag engineering from Penn State.

Royer will be examining ways that producers can avoid building failures. He will show slides of snow and wind damage from the harsh winter that affected Pennsylvania in 1994.

Gary Heim is a shareholder in the law firm of Mette, Evans and Woodside, Harrisburg. One area of emphasis of the firm is agricultural law. Heim is primarily responsible for serving the firm's agricultural clientele.

Heim received his bachelor's in economics from Elizabethtown College in 1977 and his J.D. from The Dickinson School of Law in 1980. He was reared and worked on his family's farm in Schuylkill County throughout high school and college.

Heim is a member of the Pennsylvania and his local county bar associations. He is a member of and is a past chairperson of the

Agricultural Law Committee of the Pennsylvania Bar Association.

Liz Brown was raised on Sperry Farms Inc., a poultry farm which raises eggs in northwest Pennsylvania. Brown said the farm "continues to be a strong and viable non-contract operation under the leadership of the second generation, consisting of my two brothers." Brown was graduated from Penn State in 1977 and went to work for Agway Inc., in their farm planning department.

"I credit that department with extensive in-house training and am thankful for seven years of experience with Agway," said Brown. She became an agent with the IRS. She then worked for Farm Credit before becoming a self-employed accountant. Brown said she enjoys "year-round consulting with my clients, most of whom are full-time farmers."

Doug Wallick began in the insurance business in 1979. He said his career started as a "captive agent" with Agway Insurance

Lebanon Honors Conservationists

LEBANON (Lebanon Co.) — The Lebanon County Conservation Awards Committee has selected the winners of its annual awards program.

- They are:
- Chesapeake Bay Clean Water Farm: Dale and Charlotte Hoover, S. Annville.
 - Conservationist of the Year: Frank Meiser, Lebanon.
 - Conservation Landowner of the Year: David Schreffler, Millcreek Twp.
 - Conservation Educator of the Year: Judi Iskowitz, Palmyra School Dist. and John Hromco, Palmyra School Dist.

Group. Douglas C. Wallick Insurance became an independent agency in 1984, located in Camp Hill. Wallick said his agency specializes in agricultural insurance, primarily property and casualty with additional emphasis on life, disability, and extended-care insurance programs.

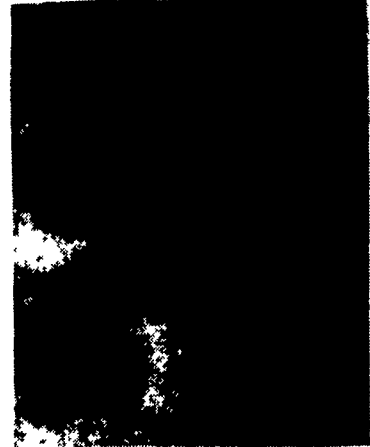
Winners will receive their awards at the annual planning meeting of the Lebanon County Conservation District scheduled for Wednesday, Nov. 8, at 11:30 a.m. in the Lebanon Valley Agricultural Center.

Nominations for the awards program are taken on an ongoing basis at the Lebanon County Conservation District, 2120 Cornwall Rd., Suite 5, Lebanon, PA, 17042-9788, or call (717) 272-3377.

The Hoovers are being noted for good stewardship on their farm. Such responsible management reduces problems from sediment and nutrient pollution.

Meiser is well known for pioneering the use of wetlands to abate water pollution at the Lebanon landfill as well as being vocal about water quality and quantity issues related to Swatara Creek.

Schreffler has practiced sound management on his woodlot and pastures while serving his township on landuse matters. Iskowitz and Hromco instituted Palmyra's honors environmental science course.



A parasitic wasp going to work in the layer house.



Do you need to level the corral, clear a trail, or clean out the stalls? Then it's time for you to put a Kubota tractor to work.

Kubota's new B-Series provides strong, versatile performance with diesel engines providing 13-18 PTO HP. These environmentally friendly E-TVCS engines set new standards for low emissions, low noise and low vibration.

Your new Kubota will be easy and comfortable to operate, with power steering and a highback seat. Choose 2WD or 4WD, standard gear or hydrostatic transmission. Even Kubota's exclusive Bi-Speed Turn is available.

Visit your local Kubota dealer to see the full selection of Kubota tractors from 10-91 PTO HP. You'll want to put one to work around your corral.

Kubota Tractor Corporation markets a full line of tractors through a nationwide network of over 1,000 dealers.



See Your Local Kubota Dealer

PENNSYLVANIA
Altoona
HINES
EQUIPMENT
814-742-8171

Chambersburg
STOUFFER
BROS., INC.
717-263-8424

Jersey Shore
THOMAS
L. DUNLAP
717-398-1391

Millburg
MIFFLINBURG
FARM
SUPPLY, INC.
717-966-3114

West Chester
WENNER FORD
TRACTOR, INC.
215-399-9815

NEW JERSEY

Hainesport
MATERIAL
HANDLING
SYSTEMS
609-267-6100

Bloomsburg
TRACTOR
PARTS CO.
717-784-0250

Cochranville
STOLTZFUS
FARM
SERVICE, INC.
215-593-2407

Honesdale
MARSHALL
MACHINERY, INC.
717-729-7117

New Berlinville
ERB & HENRY
EQUIPMENT, INC.
610-367-2169

York
YORK TRACTOR,
INC.
717-764-1094

DELAWARE

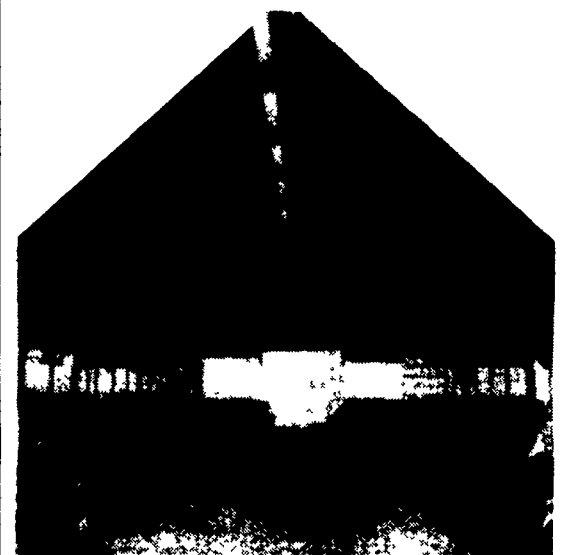
Newark
NEWARK
KUBOTA, INC.
1-800-956-3031

Coultersport
HOWARDS
OUTDOOR
POWER EQ.
814-274-9800

Elizabethtown
MESSICK FARM
EQUIP. INC.
717-367-1319

Lebanon & Lancaster
KELLER BROS.
TRACTOR CO.
717-949-2000
717-569-2500

Randall
NICARRY
EQUIPMENT, INC.
610-928-2441



AGRICULTURAL ENGINEERING CONSULTANTS

"CALL US TO DESIGN YOUR
NEXT BUILDING PROJECT"

FARMSTEAD PLANNING

BUILDING DESIGN

BLUEPRINT DRAFTING

VENTILATION DESIGN

DAIRY FACILITIES DESIGN

Visit us at the
ANNUAL HOUSING EXPO
Nov. 8 & 9 - Lebanon, Pa. Fairgrounds

Timber Tech Engineering, Inc.

P.O. Box 145

256 West Franklin Street

Womelsdorf, PA 19567

PH: (610) 589-4589

FAX: (610) 589-5384

