

Get A Handle On Flies

(Continued from Page A26)

It is a challenge, because, Ressler said, "in the southeast here, there aren't many fields that aren't near a neighborhood."

Admission to the expo is free.

On Wednesday's program, scheduled speakers include Tim Royer, who will address the topic, "Avoiding Building Failures"; Dr. Gordon Jones, veterinarian, who will speak about "A Vet's Commonsense Perspective of Cow Comfort, With A Focus On

the Tiestall Barns"; "Your Business — Will It Continue On Into the Future?" by Gary Heim, attorney, Mette, Evens and Woodside, in addition to Liz Brown, tax consultant and preparer.

Included on Thursday's program is Doug Wallick, Agway Insurance, "Do You Have Sufficient Coverage?"; "Paying Attention To Swine Production Details" by a veterinarian-producer panel; and Gordon Jones's topic, "A Vet's Commonsense Perspective

of Cow Comfort With A Focus On Freestall Barns."

Dr. Gordon Jones is a veterinarian from Oconto Falls, Wis. He said about 95 percent of his private practice involves dairy farms, situated about 35 miles north of Green Bay. Jones received his bachelor's in dairy science from Michigan State in 1974 and his DVM from Michigan State in 1977. He has been practicing since 1977.

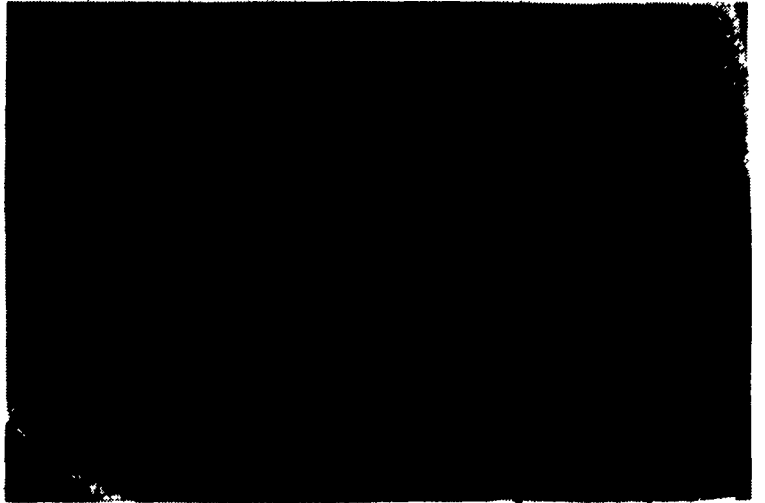
(Turn to Page A29)



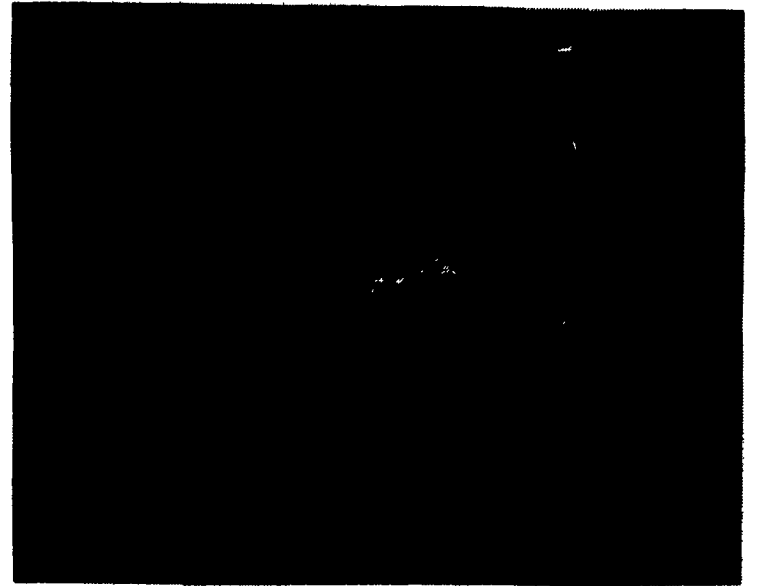
Using the black plastic to cover the manure to reduce the fly population was an experiment that worked well.

"This was a trial situation," said Clyde Myers, Berks extension agent, right. "We wanted to find out if it would work."

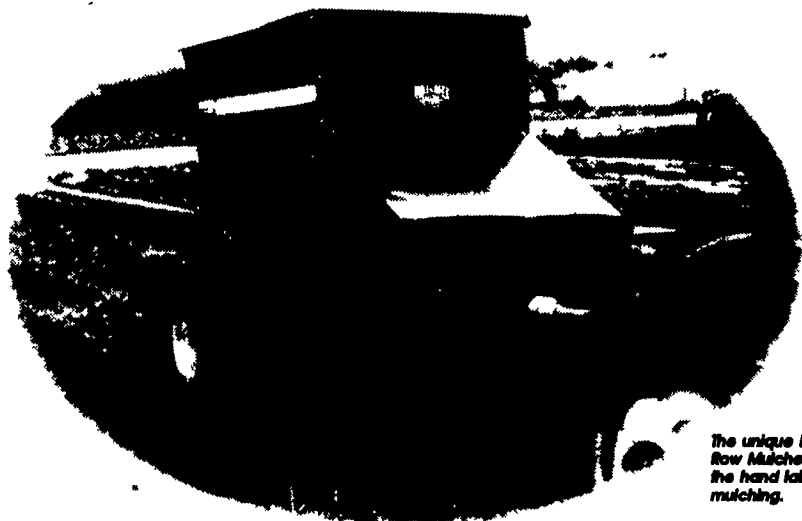
"We found out that it did work," said Pat Shea, left.



Roy Hetrick, dairy farmer in Bernville, is participating in a Penn State-sponsored study that is examining the use of 55-gallon barrels and 5-gallon plastic jugs to act as fly traps.



What killed the flies was the ammonia produced from the manure. "We think that's what actually is killing the fly larvae and pupae," said Dr. Charles Pitts, Penn State fly expert. "It kills practically everything in there."



The unique Millcreek Row Mulcher eliminates all the hand labor for mulching.

Finally, a practical way to apply organic mulch to row crops

Organic mulch is the natural way to suppress weeds, help retain soil moisture, and improve soil conditions. Trouble is, hand mulching takes too much time and effort. Now the Millcreek Row Mulcher makes it easy and affordable to mulch berries, grapes, fruit trees, and other row crops. One operator can mulch an acre in just a couple hours depending on conditions.

Spread A Variety of Materials, Including Lime

You can spread all types of stemless flowable mulches, such as wood chips, sawdust, chopped bark, even compost, with plenty of clearance to avoid plant damage. Plus, the Millcreek Row Mulcher is ideal for banding lime and other materials requiring lighter applications. The optional metering gate gives you complete control of the coverage so you can tailor applications to best suit your cultivation practices. With the labor-saving versatility you get with the Millcreek Row Mulcher, you may even find new techniques to grow better crops.



For Small Growers

This may be the affordable machine you've been looking for to mulch berries, grapes, and other row crops. Think of the labor you'll save.



For Commercial Growers

Choose from 3.1, 4.5, and 6.8 cubic yard capacities. Or call to discuss your special requirements.

One "Farm-Tough" Machine

With our own farming background, we take great satisfaction in building affordable machines for growers like you who need reliable, trouble-free equipment to help increase production and keep costs down. That's just what the Millcreek Row Mulcher will do for you. Call today.



(717) 656-3050
2617 Stumptown Rd.
Bird-in-Hand, PA 17505

Attention
Central PA Farmers
Broiler, Turkey and Hog
finishing contracts available
for new houses



Good Genes Make A Big Difference

Chore-Time's MODEL C2⁺ feeder is the result of more than 40 years of innovative breeding. Here are a few of the traits you get from the Chore-Time bloodline:

- Labor-saving Feed Windows
- Chuck-friendly Feeder Grill Design
- Unsurpassed feed converting ability

For more information call
1-800-673-2580
ask for Jay Kreider

ANIMAL HOUSING EXPO

See Us At The  November 8 & 9
Lebanon Fairgrounds, Lebanon, Pa.

Northeast agri systems
Northeast Agri Systems, Inc.
Flyway Business Park
159A West Airport Road
Litz, PA 17543
Ph (717) 569-2702
1-800-673-2580

Delmarva Store
108 University Ave
Federalsburg, MD
(Formerly Long Lumber)
1-800-738-4361

Northeast agri systems

CHORE-TIME

Dedicated to
PRODUCTION
LEADERSHIP