

PUBLIC AUCTION
VALUABLE REAL ESTATE
66 ACRES FARMLAND
 EAST EARL TOWNSHIP - LANCASTER CO.
SAT., DEC. 9, 1995
1 PM

LOCATION: From Rt. 23 East of Blue Ball take Rt. 625 North to Terre Hill High School. Turn left onto Union Grove Rd. to farmland on right.
 Real Estate consists of approx. 66 acres of land with approx. 2300' road frontage along Union Grove Rd., Rt. 625 & Old Road. Approx. 5 acres woodland and balance tillable ground. Zoned agricultural, residential medium and residential low density. The highly productive farmland has potential.
 Terms 10% down auction day and balance at settlement March 1, 1996. For land plotting and details call Auctioneers 717-733-1006.
 NOTE: Auction will be held on the site at 1:00 PM.

TERMS BY:
REED W. KINZER
 717-656-7851
 Harry Yost, Atty.

Auction conducted by:
Randal V. Kline, Lloyd Kreider,
Roy Good, Jr., Auctioneers Lic. #499L
 717-733-1006



Public Auction Register
 Closing Date Monday 5:00 P.M.
 of each week's publication

SAT. NOV. 18 - 11AM
Feeder Cattle Sale at Finger Lakes Livestock Exchange, Canandaigua, NY.

SAT. NOV. 18 - 12 Noon
3000 lots of general merchandise. 55 Cottage St., Minersville, Pa. off of N. Delaware Ave. Performance Auction Co. Mark Baranowski, auct.

S PUBLIC AUCTION
OF VALUABLE
ALLIS CHALMERS TRACTORS,
MODERN
FARM EQUIPMENT, GUNS,
PERSONAL PROPERTY
SAT., NOV. 11, 1995
AUCTION TIME: 9:00 A.M.

LOCATION: 3451 Sunnyside Road, Manheim, PA. From Rheems exit of Rte. 283 follow Cloverleaf Road North approx. 3 mile (thru Milton Grove) to Sunnyside Road. Turn left onto Sunnyside Road to first farm on left. Next to Heistand's Mill. Rapho Twp., Lancaster County, Pa.

- Allis Chalmers 8010**
w/Cab, Air, Radio, Powershift, 2700 Hrs., 18.4-38 Tires, 110 hp. a nice clean 1 owner tractor.
- Allis Chalmers D-17 Series IV WFE, PS, 3 Pt.,** Front Weights, Good Rubber
- Allis Chalmers D-15**
w/PS, Snap Coupler, Cultivator
- Allis Chalmers D-14**
w/PS, Snap Coupler, New Tires
- New Holland #L425 Skid Loader**
w/fork & bucket, 575 hrs.
- Massey Ferguson #510 Combine**
w/cab, 12' grainhead
- New Idea #702 Uni-System**
w/3 Row Cornpicker Unit

TERMS: Cash or Good Check Day of Auction. Out of state buyers Must have a bank letter of guarantee addressed to this specific auction to buy with check.
 Auction Order: 9:00 A.M. Wagon Items, Household Items 11:30, Guns followed by Farm Equipment and Tractors.

- New Holland #L425 Skid Loader,**
w/Fork & Bucket, 575 Hrs
- New Holland #316 Baler w/#70 Thrower,** like new;
- New Holland #488 9' Haybine,** excellent condition;
- New Idea #400 Rake w/Rubber Teeth;** Pequea PTO Hay Tedder;
- New Holland 30' Elevator w/Motor;** Little Giant 16' Elevator w/Motor;
- (3) 16' Hay Wagons w/Racks;** Glenco Soil Saver 7 Tooth Chisel, like new;
- I.H. #370 Transport Disc Harrow;** 13' Dunham Lehr Cultivator;
- Brillion 10' Field Cultivator;** IH #56 4 Row Corn Planter w/Insect. & Fert.;
- New Holland #357 Grinder Mixer;** New Holland #680 Manure Spreader w/2 Beaters, Hyd. Gate, Tandem Axle, Gratz Chain, good condition;
- Kill Bros. Gravity Wagon;** Oliver #568 4 Bottom Plow w/Hyd. Reset;
- IH #10 Grain Drill 13 Disc;** Oliver #364 4 Row Cultivator, 3 Pt.;
- woods #RM 90 Mower, 3 Pt.;** Century 125 Gal. Crop Sprayer, 3 Pt.;
- Flatbed Wagon;** King Wise Corn Drag w/Motor;
- A-C #80R Pitmanless Mower,** Snap Coupler;
- Massey Ferguson #510 Combine**
w/Cab, 12' Grain Head
- New Idea #702 Uni-System w/3 Row**
Cornpicker Unit
- Approx. 8 Ton Alfalfa Mixed Hay;**
7 Ton Straw
- Skid Fuel Tank; 500 Gal. Girton Milk Tank w/Washer;
- (2) Feed Carts; Silage Cart; Wheelbarrow; Surge Milker Unit; Rival Electric Heater; Fly Sprayer; 8' Gate; 14' Gate; McCulloch Pro Mac 510 Chain Saw; 2 Electric Fencers; Minnich Tobacco Bale Box; Tobacco Shears; Tobacco Spears; Tobacco Plant Boxes; Platform Scale; Aluminum Shovel; Brooms; Forks; Sledge Hammer; Scraper; Air Compressor; Snapper 5 hp. Rear Tine Rototiller; Wagon Load of Farm Items.

1978 Chevrolet Pickup, Auto., V-8, PS,
 Good Tires
Guns - 11:30 AM

Winchester Model #94 32 Special Rifle, Lever Action; Winchester Model #94 30-30 Rifle, Lever action; Inter Arms Model #92 arc 38 s&w 357 Mag. Rifle, Lever Action; Remington Model #31 16 Ga. Shotgun, Pump; Mossberg Model #342 22 Rifle, w/Scope; 6 Gun Cabinet;

Furniture & Appliances

Dining Room Hutch; Wardrobe; Dressers; Coffee Table; TV; Ironstone China Set; Carnival Glassware; Misc. China & Glassware; Enterprise Meat Grinder; G.E. Range; G.E. Refrigerator; G.E. Chest Freezer; Singer Sewing Machine; plus other useful houseware.
 AUCT. NOTE: A very nice clean line of Tractors and Farm Equipment in excellent working order. Make plans now to attend this auction to fill your future farm equipment needs.
 TERMS: Cash or Good Check Day of Auction. Out of state buyers Must have a bank letter of guarantee addressed to this specific auction to buy with check.
 Auction Order: 9:00 A.M. Wagon Items, Household Items, 11:30 Guns followed by Farm Equipment and Tractors.

Auction For
ROY F. GRUBER
 Auction managed and conducted by
JOHN D. STAUFFER
 AU-1509-L
 Phone: 717-665-5099
 Manheim, Pa. 17545
 Food by Red Rose Snowmobile Club

Real Estate Auction, 403 S. Main St., Shrewsbury, Pa. From I-83 Exit 1, Rt. 851 W. to square L, to sale on L. Kenneth Keeny, auct.

SAT. NOV. 18 - 1PM Real Estate. 971 Georgetown Rd., Paradise, Bart Twp., PA. Dir: From Strasburg, Approx. 6 Mi. on Rt. 896 South. Sale on Left. Sale for: Gladys Johnson Estate. Miller & Siegrist Aucts.

SAT. NOV. 18 - 2PM Hunting Cabin. Swanger Rd., White Deer Twp., Union Co., Pa. Rt. 15 N. of Lewisburg to Milton exit, at light turn left approx. 4.5 miles to Ft. Titzells Rd. and turn right 1.5 miles to Swanger Rd. 1st dirt road to left and at Y keep rt. to cabin. By I.S. Leaman et al. James C. Young, auct.

SAT. NOV. 18 - 2PM Toy Tractor Consignment Auction

SAT. NOV. 18 - 12NOON Real Estate. RD #3, Pine Grove, PA. From Traffic Light in Pine Grove, Travel East on Rt. 443 for 5 Mi. or From Schuylkill Haven, Travel West on Rt. 443 for 8.3 Mi. and turn South on Flat Hill Rd. Go .8 Mi. to First Macadam Road and Keep Bearing Left for 1.2 Mi. Sale Ordered by: Anna Lou & John Siegel. Raymond P. Stump Aucts.

SAT. NOV. 18 - 12 Noon. Buffalo Valley Produce Auction, Mifflinburg, PA

GIGANTIC CHRISTMAS TREE AUCTION
November 21, 1995 • 10:00 A.M.

Buffalo Valley Produce Auction
Mifflinburg, PA

Direction: From Harrisburg take Rts 11 & 15 North to 15th St. Turn right on Lewisburg. In Lewisburg turn left on Travel West on Rt. 45. Go 5/4 mile to Pines Church Rd. Turn left travel on Pines Church Rd. to 4-way stop. At 4-way stop travel 300 yds. turn left. Auction begins.

This will be the largest Christmas Tree Auction on the East Coast. We will be selling thousands of Christmas trees, wreaths, roping, garlands, and crafts.

If you buy or sell trees, don't miss this Auction.
 Bring A Load, Buy A Load.
 For More Information, Call 717-966-1151
 Neil Courtney, Manager
 AU-002651-L

4:30PM at Lancaster's Farm & Home center off Rt. 72 behind Landis Bros JD Dealership. R. Stoltzfus & R. Harry, aucts.

SUN. NOV. 19 - 2PM Real Estate. Wellboro, Pa. off Rt. 6 in Wellboro turn onto Charleston Rd., pass McDonalds & lumber co., continue on Charleston Rd. approx. 3 miles sale on left sign in yard. By Catherine C. Gales. Kenneth Griest, auct.

TUES. NOV. 21 - 9AM Quilt, craft & Buggies. A&C Diffenbach Auction, Inc. 100 W. Jackson St., New Holland, Pa.

TUES. NOV. 21 - 6PM Rental or residential house and additional building lot. Landis Valley Rd. and Owl Hill Rd., Lititz, Pa. For Alta Mae Stauffer. E.M. Murry Assoc., auct.

TUES. NOV. 21 - 6PM Real Estate. Located at 1987 Camp Swatara Rd., Myerstown, PA. Directions: From Myerstown Take Rt. 645 North to Frystown Continue 1/4 Mi. North of Frystown Property on Right. Take Interstate 78 to Exit 2 Travel Rt. 645 South to Property on Left. Terms by: Melvin & Esther Witmer Sylvan B. Witmer Aucts.

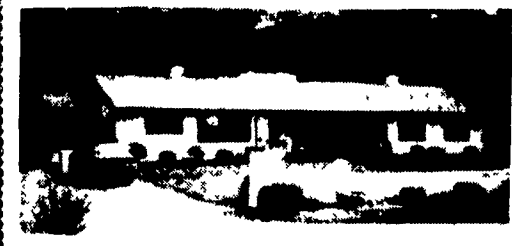
TUES. NOV. 21 - 7PM Feeder Cattle Sale. Westminster Livestock Auction.

TUES. NOV. 21 - 7PM Pigs Graded Sale. Westminster, MD Westminster Livestock Auction.

TUES. NOV. 21 - 8PM Feeder Cattle Sale. Carlisle Livestock Market, Inc., Exit 12 off I-81 turn South - then left onto Alexander Spring Rd. 249-4511.

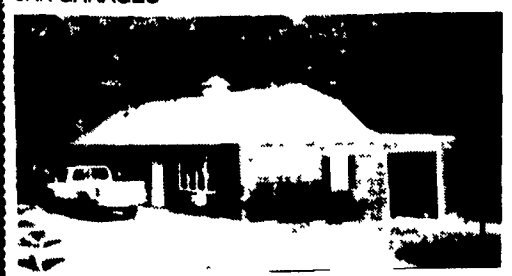
PUBLIC SALE
OF
8 ACRES M/L - REAL ESTATE
FINE BRICK RANCH DWELLING
APARTMENT & 4 GARAGES
COTTAGE W/APARTMENT &
GARAGES, POLE SHED
RAPHO TOWNSHIP
(Rt. 72 - Near PA Turnpike Exit 20)
SAT., NOV. 11, 1995
At 11:00 A.M.

Located at 85 Lehman Rd., Rapho Township, Lancaster Co., PA. (Directions: Rt. 72 - Just North of PA Turnpike Exit #20. Turn West onto Lehman Rd., left to property).



BRICK RANCHER w/IN-LAW LIVING QUARTERS
4 CAR GARAGES

LIVING ROOM w/Stone Fireplace, Cathedral Ceiling, FAMILY ROOM w/Stone Fireplace, KITCHEN w/Raised Panel Oak Cabinets, Dishwasher, Stove, Wall Oven, Microwave. FORMAL DINING ROOM w/Built-in Cherry China Cabinets. MASTER BEDROOM w/Built-in Dressers & Cabinets, Full Bath And Dressing Room and Walk-in Closet Adjacent To Master Bedroom.
 BEDROOM #2
 BEDROOM #3
 2 1/2 BATHS
 LAUNDRY
 LOWER LEVEL: IN-LAW QUARTERS (APARTMENT), LIVING ROOM w/Fireplace, KITCHEN w/Cabinets, Stove, ONE BEDROOM. 4 CAR GARAGES



FRAME COTTAGE w/Apartment, Garages & Storage Area.
 APARTMENT CONTAINS: LIVING ROOM, KITCHEN AREA w/Cabinets, Stove & Refrigerator, LARGE BEDROOM w/Closet.
 10'x30' POLE BUILDING.
 LOT SIZE: 8 ACRES M/L w/328' M/L ALONG RT. 72.
 This Property Has Many GREAT FEATURES! Central Air Conditioning, Central Vac, GREAT LOCATION - Just Off Rt. 72 & PA Turnpike Exit #20. Ideal For Horses, Etc.!

Open House: Sat., Oct. 28 & Sat., Nov. 4 From 1 P.M. - 3 P.M. Or Call 717-664-2430.

No out of state checks unless accompanied by a current bank letter or prior arrangement with auction service.

TERMS BY
DUAINE D. HOUCK
DORIS M. HOUCK

HORST AUCTS.
 T. Glenn (717) 859-1331 • (717) 738-3080
 Timothy G. AU436L
 Thomas A. (717) 738-2132
 "VOICES OF EXPERIENCE"

ESTATE AUCTION
SAT., NOVEMBER 11, 1995
9:00 A.M.

RON GILLIGAN WILL CONDUCT AN AUCTION FOR THE ESTATE OF GERALD OTTO AT THE PLEASANT VIEW FARM IN SINKING VALLEY, BLAIR CO. PA. EXIT 220 FROM ALTOONA AT KETTLE ST. - 7 MILES TO FARM. FROM THE EAST RT. 22 TO RT. 453 NORTH - EXIT AT EAGLE MATERIAL BLDG. - 7 MILES TO FARM - OR FROM TYRONE RT. 453 SOUTH TO FORT ROBERDEAU SIGN - FOLLOW AUCTION SIGNS.

AUCTION CONSISTING OF FARM MACHINERY, 1992 FORD PICK UP TRUCK & TRAILER, & HOUSEHOLD GOODS AS LISTED:
FARMALL SUPER "C" TRACTOR - NARROW FRONT - HYDRAULICS - 90% RUBBER W/PULLEY - INTERNATIONAL INDUSTRIAL W-400 TRACTOR W/OTTAWA LOADER - NEW HOLLAND #77 BALER W/WISE MOTOR, 22" CASE THRASHER ON STEEL, 28" HUBER THRASHER ON SOLID RUBBER, 7 Ft. MASSEY HARRIS GRAIN BINDER, IHC 8 Ft. GRAIN BINDER, 6 Ft. #10 MILWAUKEE GRAIN BINDER.
HORSE DRAWN MOWERS: Big 4 JOHN DEERE, 2 - NEW 4 IHC, 3 #7 IHC, M.H. #751, 2 - Oliver Horse Mowers, Big 6 IHC, 3 - #6 IHC, #9 IHC HIGH GEAR, #5 Case, 3 - New Idea, 3 - #33 Massey Harris, David Bradley, Deering 1 horse mower
TRACTOR MOWERS: 7 ft. IHC, 2 - 7 ft. New Idea, 1-2-3 Bottom Tractor Trail Plows, 10 - Horse Drawn Cultivators, McCormick Horse Drawn Drill, 16 ft. Elevator for Dion Thrasher, Flail Mowers, Cub Manure Spreader, David Bradley Tractor Spreader, 5 ft. Cultivator, 2 sets Tractor Cultivators, 2 - Small Crowfoot Packers, Woodbeam Plows, 2-3 Horse Hitches - SOME NEW, LOTS OF NEW IDEA SPREADER PARTS, (5 NEW WEBS - SOME NEW SHIELDS), 2 Sets Rear End Steel for 206 - 20 Wheel hubs assorted, Wooden Pittmans, J.D. Drill Parts, N.I. 3 - sets NEW Steel #9 Mower Wheels, 2 - Sets Pioneer Made Rear Spreader Wheels, LOTS OF IHC GRAIN BINDER WHEEL CANVASES - KNIVES - PARTS - TRUCKS, LOTS OF HORSE DRAWN MOWER PARTS, LOTS OF USED HORSE DRAWN MOWER WHEELS, 10 MANURE SPREADER TIRES, LOT OF WOOD HORSE TONGUES. Assorted 24" Gr. Dr. Manure Spreader Wheels - 3 WAGON LOADS OF HORSE AND MODERN PARTS. ALSO MANY PIECES OF EQUIPMENT FOR PARTS.

1992 FORD F250 4x4 PICK UP TRUCK - AUTO. - DIESEL ENGINE, BLUE & WHITE - AIR - DUAL GAS TANKS - 83,000 Mi. - V. Good Cond.

1986 ECONOLINE TANDEM AXLE TRAILER - 20 Ft. - 12,000 GVW's w/8 Ft. Deck.

MARQUETTE WELDER, 5 H.P. AIR COMPRESSOR, INT. PEDAL TRACTOR, LOTS OF FARM MACHINERY MANUALS, BUGGY WRENCHES, 5 GALLON MILK CAN, SIMPSON PLATFORM SCALE, LOTS OF HAND TOOLS, BENCH VISE, CAP FOR 6' BED OF PICK UP TRUCK.

HOUSEHOLD: PICTURE FRAMES, 4 SECTION PANE WINDOWS - INSULATED, SOFA - EXCELLENT COND., SANYO MICROWAVE OVEN & STAND, SAMSUNG VHS, MIXER ON STAND, SAFE W/COMBINATION, COUNTRY BENCHES, MIRRORS, WROUGHT IRON FLOWER STAND, GAS GRILL, PANASONIC PORT. T.V., STANDS, CHAIRS, 78 RECORDS, USED WINDOWS & DOORS, ELEC. CHICKEN INCUBATOR, 3/4 H.P. SEARS WATER PUMP, & MISC. HOUSEHOLD ITEMS.

TERMS: CASH OR CHECK - DAY OF AUCTION AMISH FOOD STAND

Sale by:
Mrs. Gerald Otto
 814-944-2352

AUCTIONEERS: RON J. & RON S. GILLIGAN, PA. LICENSED & BONDED #AU339-L & #AA2223L.
 All oral information day of Auction takes precedence over written ads.
 Owner or Auctioneer not responsible in case of accident.