

NOW ACCEPTING
CONSIGNMENT
OF
TOOLS & EQUIPMENT
AT
ISENNOCK AUCTIONS
 New Park, PA
AUCTION DATE:
SAT., NOV. 18, 1995
9:00 AM
FOR CONSIGNMENTS, CALL:
BOB
717/993-2564 or
410/557-8052
OR
ANDY
717/292-4210

PUBLIC AUCTION
CLEAN LINE OF
MODERN FARM
MACHINERY
SAT., NOV. 11, 1995
Auction Time 9 AM

LOCATION: From the intersection of Rt. 501 & 422 in Myerstown take Rt. 422 East to first traffic light. Turn right onto Millardville Rd. to Redley Rd. Turn left onto Riley Rd. to farm on right. Jackson Twp., Lebanon County.

TRACTORS
 JOHN DEERE 1971 4020 Diesel Tractor w/Power Shift & Side Console w/like new Radial Tires, JOHN DEERE 3020 Gas Tractor, John Deere 2020 Diesel w/JD #48 Loader (Rubber Like New), Case Vac Tractor.

FARM MACHINERY
 JD 3940 Harvester w/Elect. Controls, 2R Cornhd & Hay Pickup, (2) JD 216 Forage Wagons, JD 6500 Blower, IH #56 Blower, JD 7000 Conservation 4R Compactor w/Manure & Bean Attach, Glencoe Soil Saver 7 Tooth Chisel Plow, JD 2500 5 Bottom Spring Auto Reset Plow, IH 450 3 Bottom Auto Reset Plow, JD 310 Disc Heavy Duty 11', JD 215 Dvra Cushion Disc, JD 12' Field Cultivator, JD 14' Cultipacker w/Center Bearing, 11' Cultipacker w/Center Bearing, 11' Steel Roller, JD 17 Double Disc Grain Drill w/Alf Seed Box, JD 3346 Baler w/Hyd. Thrower, NH 479 9' Haybine, (2) 18' Bale Wagon on JD Gears, JD 640 Rake w/Dolly Wheel, Pequea Pto Hay Tedder, Zimmerman 36' Bale Elevator, JD 700 Tandem Axle Hydra Push Manure Spreader (ex. cond.), JD 400 Grinder/Mixer, NI 327 2RW Compicker w/12 Roll Husking Bed, (2) Favorite Gravity Wagons, Little Giant Corn Drag, Harvester Handler 16' Grain Elevator, Gehl 315 Scavenger II Manure Spreader, NH 450 Sickle Bar Mower, Century 300 Gal. Pull Type Field Sprayer, JD 407 Rotary Mower, JD 3 Post Hole Digger, Brady Flail Chopper, 2 Flat Wagons, Stone Trailer, JD 3 Sec Harrow, JD 28 2 Bot. 16' Plow, JD 2R Quik-Tach Front Mid Cultivator, JD Front Mount Circular Saw, 3 Pt. Cultivator, Zimmerman 24' Feeder Wagon, Zimm. Rect. Bale Feeder, 8' Cement H. Trough, Wk. 2 HP Bedding Chopper, JD 1R Corn Hd, Cattle Chute & Head Gate, Tox-O-Wick Cattle Oiler, Mineral Feeder, Golden Eagle Fly Fogger w/Elect. start, Air Stream Dust Helmet, JD Dust Blower, 9' Blower Pipe, 8' Gal. Water Trough, Pride-Of-the-Farm Cattle Waterer, Super Blast Steam Cleaner, 8hp. Troy Bilt Rototiller, Emglo Air Compressor, Century 225 Amp. Welder, Champion Space Heater, Surge SP22 Milk pump, 2 Hole Corn Sheller, Butcher Furnace, Platform Scales, Approx 5000 Tobacco Lath, Tobacco Bale Box, Tobacco Shearer, 25 Milk cans, GE 7 1/2 Hr Motor, Echo Weeder, JD 110 Lawn Tractor Air Greaser, Potato Plow, Rabbit Pens, Hog Feeders, Alum. & Ext. Ladders, Fedd Carts, Cattle Gates, 3 Pt. Bale Mover, 8' Cattle Racks, Oliver 70 Belt Pulley, Stewart Cow Clippers, Fogger Plus many other items

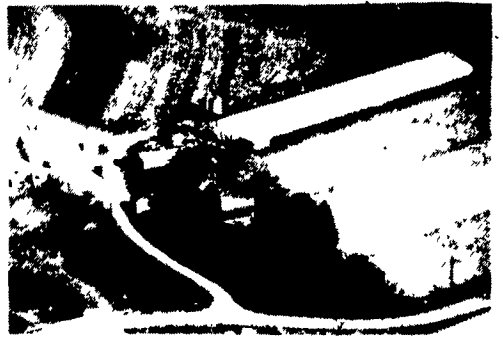
NOTE: The Nolts are retiring from farming and are selling their machinery to the highest bidder! Nice clean line of well maintained equipment. Sale Order: Small Wagon items followed by machinery. Terms are cash or good PA check. Food Stand.

Terms By:
MELVIN M. & JANE S. NOLT
 717-866-5100

Auction conducted by:
 Randal V. Kline, Lloyd Kreider,
 Roy Good, Jr., Auctioneers #499L
 717-733-1006

KLINE, KREIDER & GOOD
 AUCTIONEERS

PUBLIC AUCTION
OF VALUABLE
43 ACRE M/L FARM
31 ACRES TILLABLE LIMESTONE
SOIL, STREAM &
FARM EQUIPMENT
WED., NOV. 8, 1995
Sale at 10:00 A.M.
Real Estate at 1:00 P.M.
 Located 2 miles East of White Horse, turn North off Rt. 340 on Plank Rd., 1/2 mile to sale, Salisbury Twp., Lanc. Co., PA.



2 1/2 Story Stone Dwelling
Built in 1800s
 w/eat-in kitchen, built-in cabinets, laundry, family room w/working fireplace, living room w/fireplace, den, large staircase.
 2nd floor: 3 bedrooms, 2 w/fireplace, full bath.
 3rd floor: 3 plastered rooms.
 1/2 basement, oil fired hot water heat w/summer & winter hook-up wood burning boiler, well w/pressure.
 50'x50' stone bank barn w/26'x30' extension, 58'x312' frame & steel chicken house, 200 AMP service workshop & 1/2 bath, manure pit, two 24 ton feed bins, 2 car concrete block garage w/concrete floor, 28'x40' frame & steel equipment shed w/stripping room & dampening cellar.
 For appointment call 442-4529. 10% down day of sale, balance on or before Jan. 3, 1996.

FARM EQUIPMENT: David Bradley 780 Diesel 5570 Hrs. has Cab, Bodco Liquid Manure Pump 3 yrs. old, New Holland 308 Tandem Side 2275 Gal. Spreader, N.H. 256 Rake w/Rubber Teeth, N.H. Super 23 Blower, N.H. 478 Haybine, John Deere 14T Baler, Zimmerman 32' Elevator, 7' & 10' Pittsburg Transport Disc, 12' Cultipacker, 3 Section Harrow, 3 Pt. Taj, for Way 7 Tooth Chisel Plow, N.I. No. 7 Corn Picker for Parts, 200 Gal. Plastic Liquid Tank, 200 Gal. Field Sprayer, Large Concrete Mixer w/Motor, 3 Pt. 5' Swivel Blade, Simplicity Garden Worker, 200 C.C. Honda Big Red 3 Wheeler 1787 Hrs., Grain Cleaner, Delco Pressure Washer, 16' & 38' Wooden Extension Ladders, 3 h.p. Air Compressor, Duracraft Steel Band Saw, G.E. Welder, 1/2" Table Mounted Bench Drill, 3 Pt. Hitch Saw Buck, Craftsman 7 h.p. Riding Mower, Chicken Coops, Egg Baskets, Chicken Nests, Pony Saddle, 2-Man Saw, Pea Scales, Wooden Pulleys, Old Parlor Stove, Hand Tools, many other items not mentioned.

Terms by
James E. & Lois E. Kauffman
 Auctions.
 Robert E. & Jeffrey R. Martin, (717)656-7770
 AU000580L
 Randall L. Ranck
 Michael L. Martin, App.
 Kenneth Covellens, Atty.

"Horst Auction Center"
PUBLIC SALE
Antiques, Household Goods
& Tools
Wed., Nov. 8, 1995
at 2 P.M.

Sale to be held at the Horst Auction Center located at the corner of Rt. 322 & Durlach Rd. (Approx. 2 1/2 miles west of Ephrata) Ephrata, Lancaster County, PA

FURNITURE - Blanket Chest; Jelly Cupboard; Camel Trunk; Set of Plank Chairs; OAK - Sq. Ext. Table; Library Table; Washstand; High Chair; Bedroom Suite; Dresser Base; Depression Bedroom Suite; Waterfall Wardrobe;
MAHOGANY - Desk; Tier Table; Piano Stool; Mod. Pine Bedroom Suite; Mod. Bedroom Suite (Queen Size); Maple Bedroom Suite; Bookcases; Desk; Gun Cabinet; Victorian & Needlepoint Chairs; Glass Table Set; Breakfast Sets; Box Springs & Mattresses; Sofa & Love Seat; Living Room Suite; Wood Dryer; Trunks; Patio Set
APPLIANCES - Refrigerator; Auto Washer; Apt. Dryer; Freezer; Air Conditioner; Electrolux; Color T.V.; Table Radio; German Radio; Lamps; Tiffany Type Shades; Gone w/Wind Kero Lamp; Cuckoo Clock; Mantel Clocks; Guardian Alum. Cookware; Milk Shaker; Cookware; Griswold; Fry Pans; Agateware; Set of Silverware; Tin Boxes; Candelrod; Min. Pot Belly Stoves; Sleigh Bells; Coke Cooler.
CHINA & GLASSWARE - Old Hall "Farm" Tea Set; Aurora; Snowflake; Transfer; Ironstone; Cookie Jar, Tea & Chocolate Sets; Majolica; Laughlin China; Stangl, Nippon & Nortake China; Stoneware Crocks & Jugs; Earthen Pie Plates; Fiesta; Shakers; Halls; Souvenir Plates; Carnival Glass (Water Set, Peacock Dish, Rose Bowl, Sugar Bowl; Pressed & Pattern Glass Footstools; Opalescent, Mercury Vases; Cranberry Glass; Depression Glass; Ruby & Milk Glass; Animal Figurines; Avon
LINENS - Quilt; Comforts; Lap Robe; Tapestries; braided Rugs; Fancywork; Beaded Purse; Baskets; Hats; Old Baseball Uniform Trolley Hat; Teddy Bears; Violin; Watches; Jewelry; Books; Post Cards; Stamps; 1901 Wamnamaker Catalog; Early Sporting News; Elec. Hockey Game; Toys & Games; Dolls; Winross Truck; Pictures
GUNS - Mossberg Model 395 12 Ga.; Remington Model 105-M .22; Bows & Arrows; Hunting Knives; Bayonet & Sword; Snowshoes; Skis; Tent
TOOLS - Snowblower; Lawnmower; Makita Sawzall; Chain Saw; Drill; Vise; Hand Tools; Ladder; Sled; Milk Bottles; Canning Jars; Wooden Beer Crates & Boxes; Butcher Saws; Slaw Boards; Puch Moped; Bicycles
 No out of state checks unless accompanied by a current bank letter or prior arrangement with auction service.

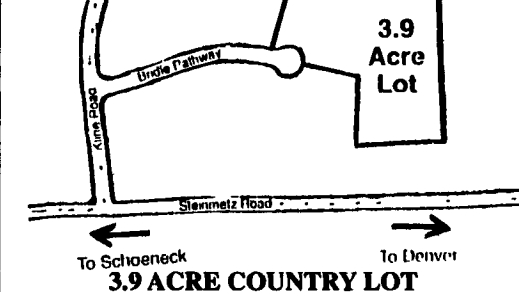
SALE FOR
ANNIE MENTZER
MILDRED SNADER
HORST AUCTS.
 AU438L
 T. Glenn (717) 859-1331 • (717) 738-3080
 Timothy G. Fax # (717) 738-2132
 Thomas A. "VOICES OF EXPERIENCE"

Public Auction Register
 Closing Date Monday 5:00 P.M.
 of each week's publication

THURS. NOV. 16 - 10AM
 Estate auction for Paul E. Grove Estate. On the farm take Rt. 74 S. of Red Lion approx. 5 miles, just before Brad Smith Auction T/R onto Laurel Rd., go approx. 6 miles, that road will run into Muddy Creek Fork Rd., farm approx. 1/4 mile on right along Muddy Creek Forks Rd. Bradley K. Smith, auct.

3.9 ACRE BUILDING LOT
 Between Schoeneck and Denver
PUBLIC AUCTION
SATURDAY, NOVEMBER 18, 1995
 Auction Time 12:00 Noon

Directions: From the square in Denver go west on Main Street which becomes Stienmetz Road, follow to Kline Road turn right, then right on Bridle Path Way. West Cocalico, Lancaster Co., PA.



This is the largest lot of this small 6 lot subdivision in the country. This lot is at the end of the cul-de-sac with lots of privacy and no traffic. Lot is perked and approved for a conventional sewage system. Enough room for a small barn or another building. You'll love the setting of this lot. A must see! Auction will be held on lot site.

TERMS: 10% down payment day of auction, balance at final settlement on or before December 22, 1995. Don't miss this opportunity to buy, owners plan to sell. For more information call Aaron E. Martin, Auct. or Mahlon at 859-2350.

AUCTION BY
MAHLON N. & ROZANNE ZIMMERMAN
 ATTORNEY: Gibbel, Graybill & Hess
 (717) 291-1700

AARON E. MARTIN AUCTION SERVICE
 Professional AUCTIONEERING
 410 West Church Rd.
 Ephrata, PA 17522
 (717) 733-3511

THURS. NOV. 16 - 10:30AM Holstein dairy cattle, farm equip, potato equip, household goods. RD 1 Womelsdorf, Berks Co., Pa. From Rt. 501 in Myerstown E on Rt. 422 for 3 miles, left onto Smaltz Rd. to farm on left. From Rt. 419 at Womelsdorf - W. on Rt. 422 through Stouchburg, R. onto Smaltz Rd. For Norman & Maryann Kurtz, Jr. Harry H. Bachman, auct.

THURS. NOV. 16 - 11AM Dairy Cow & Heifer Sale. Cumb. Co. S. of Carlisle, Pa. off I-81 at Plainfield Exit to Rt. 11 S. 2 miles to Cumberland Golf Course, turn right, go 1 mile to Clay Rd, turn left to stop sign, 2nd farm on left. Bill & Cynthia McKeenan, owners. Foreman, aucts.

THURS. NOV. 16 - 2PM Real Estate. Located adjacent to Monroe Valley Golf Course North on Rt. 72 From Exit 30 of I81 to Right into Monroe Valley. Watch for Signs. Fernwood Auction Co.

THURS. NOV. 16 - 3PM Landscaping Equip. & Supplies, JD Tractor, 4X4 Trucks, Tools. Directions: Between Ephrata & Reading From Rt. 222 Take Rt. 568 East, Go 4 1/2 Mi., Turn Right on Maple Grove Rd., Go to 1st Stop Sign Turn Left to Prop. on Left or From Reading Take Rt. 10 Turn Right on Allegeneyville Rd. Towards Maple Grove Raceway, Turn Right on Maple Grove Rd. to Prop. on Right, 3802 Maple Grove Rd., Berks Co., PA. Auction by: Ahead Landscaping. Aaron Martin Aucts.

THURS. NOV. 16 - 5:30PM Quilts & Crafts. Located at The Snyder County Produce Building Located in Port Trevorton, Snyder County, PA. 9 Mi. South of Selinsgrove on Rts. 11 & 15 or 40 Mi. North of Harrisburg. Roger A. Lauver & Dean E. Longacre Aucts.

THURS. NOV. 16 - 6PM Woodworking Equipment, Graphic Equipment, Misc. 2700 Rear Paxton St., Harrisburg, PA. Auction for Robert Terry. Kerry Pae Aucts.

By Order of U.S. Bankruptcy Court
PUBLIC AUCTION
"Tranguch Tire Service"
COMMERCIAL GARAGE/RETRADING EQUIPMENT, AIR COMPRESSORS, FORK LIFTS, ASST. TOOLS, OFFICE EQUIP., COMPUTER/PHONE SYSTEM, TRUCKS (1993 Ford 4x4), 1000's NEW/USED ITEMS
9 A.M., SAT., NOV. 11, 1995
 Location: 22nd & North Street, Hazleton, Penna. (Follow Route 309 - close to Genetti Best Western Motor Lodge).
GARAGE/RETRADING EQUIP/MISC. ITEMS: (Like New) BAUER (Mod.AD60) TWIN SCREW AIR COMPRESSOR, 10 hp Gardner Denver Air Compressor, Bear Wheel Alignment Computerized Equipment., (2) 40-40SA Coats Tire Changers, 8600 FMC Tire Changer, Bishman Truck Tire Changer, (2 Each) Branick Spreaders (6AER/EF & EF/HD), (2) Hoffman Wh. Balancers, (7) Air Bumper Jacks, Hyd. Curb Jacks (new/used), Coats Inflation Station, Sun Machine Engine Analyzer, Ammco Brake Luths, Mod. 550 Battery Charger, Headlight Aiming Center, Stud Machine, VACA VULC CURING CHAMBER (Good Cond.), TB52 VULCAN TREAD BONDER, MB100E Hercules Tread Builders, Long Mile Tire Buffer, (58) Curing Molds, TB52 Curing Rims/Flanges, Passenger Tire Inspection Spreader, Yale 3 T. Come-Alongs/Asst. Elec. Chain Hoists, Acetylene Burning Outfit/Buggy, Safety Tire Cage, LGE. ASST. - Hand Tools/Sockets/Wrenches/Tire Access. Tools/Impact Wrenches/Stud Removal Tools/Manuals etc., LGE. ASST. OF TRUCK/ FARM TRACTOR RETREAD TIRES/100's OF ASST. SIZES/BRANDS NEW/RETREAD /USED RADIAL & BELTED TIRES (Call For Listing), Asst. (new) Tubes, Asst. Car/Trailer/ Truck (new/used) Rims, 1500 Lbs. Plus Of Tread Rubber, Etc.
OFFICE EQUIP/MISC. ITEMS: AT&T Plus Phone System, Tranz 330 Credit Card Terminal w. Printer, Manuel Paymaster, Victor Cash Register, Air Conditioners, Cigarette/ Candy Vending Machine, Road Map/Asst. Sm. Vending Machines, Link Computer System w. Bookkeeping Unit/Printer & Cash Drawer, Etc.
VEHICLES/FORKLIFTS: Propane Clark Fork Lift, Big Joe Elec. Fork Lift, Enc. Storage Van Trailer, GMC Van Dura 35 Emergency Van w. Snowblade 1989 Dodge Stake Body w. Tailgate Lift, 1986 Mazda Pickup Truck, 1993 4x4 Ford 150 Pickup Truck (Good Cond.).
AUCT. NOTE: Large Auction - Individual & Lot Selling (2 Aucts. Selling) - COME EARLY/FOR THIS COMPLETE SELL-OUT.
TERMS: Full Payment Day Of Sale - Cash Pre-Approved Check Or Must Have Bank Letter of Guarantee Payment. Additional Terms Day Of Sale.
INSPECTION: Sun. Nov. 5, 1995 - 12 Noon to 3 PM
SALE BY:
 Order Of U.S. Bankruptcy Court
 Attorney William Schwab - Trustee
 Doug/Tim Houser Aucts.
 AU-000446L
 610-799-2396 or
 717-386-2191
SALE SUBJECT TO APPROVAL OF U.S. BANKRUPTCY COURT