

Sale Reports

BERGER SR. ESTATE SALE

A Public Auction of personal property was held October 28 for the estate of Herbert M. Berger Sr., 32 East William Street, Schuylkill Haven, Schuylkill Co., Pa.

Some prices included: snake cane \$425, coin operated machines up to \$700 ea., Maytag wash-machine motor \$110, Martin guitar \$900 and old car license plates up to \$470 each.

Robert A. Arner and Dean R. Arner were the auctioneers.

BRUCE

ESTATE SALE

An Estate Auction of antiques was held October 28 and 29 for the estate of Carrie Bruce, 12 miles north of Mansfield, Wellsboro St., Tioga, Pa.

Some items sold were: miniature stack bookcase \$135, miniature bow-front china closet \$125, pitcher & bowl set \$140, oak lift-top comb case \$80, oval marble top stand \$450, Victorian marble top stand \$325, Howard Miller Grandfather clock \$600, 1886 Sears bell \$120, Victorian curio w/3 mirrors \$375, bow-side oak server \$525, butter bowl \$110, child's Lincoln rocker \$170, pine jelly cupboard \$450, bow-side painted china closet \$420, brass sleigh bells \$170, butter mold \$60, glass butter churn \$67.50, fancy carved walnut book shelf \$220, J.P. Coates spool cabinet \$150, salt & pepper set (black man & woman) \$200 and over 200 dolls \$15 to \$60 each.

Randy Jelliff Auction Service managed the sale.

FISHER SALE

A Public Sale of antiques and collectibles was held October 28 by Dick and Delores Fisher, at Kauffman Station Community Center, Marion, Pa. There were 226 registered bidders at the sale.

Some items sold were: cast iron Aunt Jemima \$230, Coca Cola paper weight \$70, Griswald lid #143 \$380, #10 Walpak skillet #290, "Kiddilac" pedal car \$570, "Mustang" pedal car \$360, #6 New House bear trap \$700, double barrel Colt gun \$850, Winchester model 44 lever action \$710, Champion police motorcycle toy \$200, hunting licenses \$150 each, fishing licenses \$140 each, cottage dresser \$310, bow-front china closet \$650, oak sideboard \$500, oak double desk \$400, oak wardrobe \$450 and railroad sign \$75.

Terry L. Shetter and

Kelly A. Shetter were the auctioneers.

PUBLIC AUCTION SAT., NOV. 11, 1995 8:30 AM

Located 1 mile south of Mt. Pleasant Mills, PA. Watch for sign in Mt. Pleasant Mills, along Route 35 (Snyder County).

REAL ESTATE
NICE HOUSE IN COUNTRY W/1.55 ACRES
TOOLS, HOUSEHOLD, COLLECTIBLES
Terms: Cash, Real Estate 10% Down
OWNER
ELIZABETH SWINEFORD
P.O.A.
Betty Maneual
717-694-3682

Auctioneer:
Ken Smith AU867-L
(717) 837-3535
Dennis Hassinger AU2689-L
(717) 837-3159

MILK AMERICA'S HEALTH KICK

PUBLIC AUCTION Sat., Nov. 11, 1995 10 am

841 Pulaski Hwy, Rt. 40, 2 miles west of 13 & 40 split before Rt 1 overpass.

Tractors, attachments, antique tractors, motor home, cars P/U truck, etc. (2) Ford tractors, (3) Fordson Tractors on Iron wheels, 385 Case-IH tractors w/frontend loader, 3 PTH like new, Kubota 4 WD, 3PH w/mower, Trailer, Riding mower, air compressor, Gravely w/attachments, Olson box, 3" brush chipper, Salsco over seeder, '92 Dodge Dynasty, (3) Ford P/Us, Mazda P/U, Honda Prelude, '92 Chevy Custom Van-loaded, many other items not mentioned.

Consignments welcome.

Owner:

Mel Melancon

JOHN J. MCGRELLIS III
Auctioneer 302-239-7244
or fax: 302-239-1649

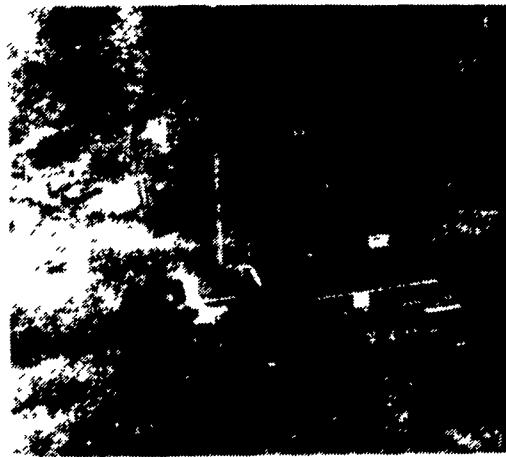


PUBLIC AUCTION OF VALUABLE REAL ESTATE, HOUSEHOLD GOODS, ANTIQUES, CAR & RIDING MOWER

SAT., NOV. 11, 1995

SALE AT 9:00 A.M. • REAL ESTATE AT 1:00 P.M.
CAR & RIDING MOWER AT 12 NOON

Located approx. 12 miles east of Lancaster - Take Rt. 30 to Rt. 41 - on 41 go 1/2 mile to Rt. 741 (opposite Gap Town Clock) - On 741, cross railroad bridge to stop sign - turn left on Mine Rd. - 1/2 mile to sale - Watch for sale signs - Salisbury Twp., Pequea Valley School District, Lancaster Co., Penna.



10 ACRES ML - ZONED R-31 RESIDENTIAL

Much of the lot is wooded, most of the 10 acres is in lawn. Majestic scenic Southern view, mature landscaping, long winding paved driveway w/stone entrance walls, metal fence & gate w/security system alarm.

Brick ranch type dwelling w/daylight basement, 2 car attached garage w/elec. door opener. Main level has eat-in kitchen & dining room area. Kitchen has built-in raised panel oak cabinets (Fenninger make), built-in Corning glass top elec. stove, Jenn-Air range, built-in service center, double stainless steel sink w/garbage disposal, built-in Maytag dishwasher, Thermador elec. double oven, Amana side-by-side 25 cu. ft. refrigerator - freezer, living room w/stone fireplace - closet & ceiling fan, deck off of living-dining room & kitchen area & extending around one side of house - looking South, Master bedroom w/closet & full bath w/seated shower stall, patio off bedroom, other bedroom w/closet, full bath off hallway w/tub & shower, laundry room w/built-in cabinets & ironing board.

Open stairway in dining room to basement. Basement has a paneled & wall papered family room w/stone fireplace & wood stove insert (woodstove equipped to circulate heat throughout entire house, Patio off family room w/sunroom looking South, paneled recreation room - furnace room w/workshop area - mechanical room - bedroom w/closet & full bath w/shower stall.

Elec. heat pump w/electronic filter, central air, 60 gal. State elec. water heater, Chem-Teck water softener, in-ground sewer, good well w/scale watcher, copper plumbing, 200 amp. elec. service central vacuum - stereo & security systems, TV tower w/antenna, insulated glass throughout, wall-to-wall carpet - except for vinyl, & ceramic flooring in kitchen - bath areas & recreation room, draperies stay.

Detached 24'x54' brick garage w/workshop area - large oversized double overhead door - single entrance door, 275 gal. above ground fuel tank rear of garage. 2 storage sheds - 12'x24' & 12'x18' - both stay.

Auct. Note - A must see Estate for those who enjoy the quiet & beauty of nature & love a scenic view of Southern Lancaster Co. farmlands.

For appointment call (717) 393-0836. 10% down day of sale, balance on or before Dec. 31, 1995.

AUCTS.
Robert E. & Jeffrey R. Martin (717) 656-7770 AU000580L
Randall L. Ranck Michael L. Martin, App
George J. Morgan, Atty.

ATTENTION — FURNITURE & APPLIANCES SOLD FIRST AT 9:00 A.M.

HOUSEHOLD GOODS — Old Dovetailed Hutch w/glass doors & spoonholder shelves, Maple Dining Room Table w/2 Boards & 6 Chairs, Oak Nite stand, 4 pc. (Draw) solid wood Bedroom Suite, Solid Cherry Dresser & Nite Stand, Cherry Drop Leaf Table w/drawer, Carved Front 5 - column legged Walnut Library Table, Old Walnut Shaving Stand, Wood Spindle Bed (as is), 5 pc. Oak Dinette Set, 2 sm. Upholstered Sofas, Hand Painted Fiddleback Chair, Spindle Back Rocker, Slate-top Coffee Table, Wooden Kneehole Desk w/glass top, Oak Captain's Chair, Misc. Tables, Picnic Table w/2 Benches, Poker Table, Ping-Pong Table, Regulation Size Slate-top Pool Table w/accessories (like new), Old Floor Safe, Wall Gun Rack Cabinet, Workbench, Metal Wardrobes, 2 Drawer Metal File Cabinet, Fireplace Opening Front.

APPLIANCES — Maytag Washer & Dryer (have age), Sharp Convection/Microwave Carousel, Comfort-glow Kerosene Heater, 17" Zenith Portable Color TV, Singer Model 600 Console Sewing Machine, 2 Console Stereo Speakers, 8 Day Waterbury Wall Clock, Ingham Mantel Clock, Old Camera, Top Con Telephoto Lenses - Camera & Flash, Misc. Camera Equipment.

GLASSWARE — Stoneware Crock, Misc. Jugs — Beer Jugs, Willowware, English Bone China Cups & Saucers, Nippon, Setting for 8 Fire King China, Old Perfume Bottle, Pressed Glassware, Blue Chicken on Nest, Lanc. Eng. New Wharf Fotty, Jardinieres, Agateware, Brass Lantern & Bell, Misc. Floor & Table Lights, Misc. Pictures, Plants, Misc. Bedding & Linen, Old Patchwork Throw, Woolrich Hunting Clothes, Snowmobile Helmets, Old Standard Computing Scales, Lionel Train Set - Model 8031 w/boxes, Tanned Hides, Golf Bags - Clubs & Balls, Crochet Set.

BOOKS & POSTCARDS — 1862 Handwritten Marriage Certificate in Tin Cylinder, 1888 Odd Fellowship - It's History & Manual, Misc. Books (1800s) Old Jolly Youngsters Children's Book, Old Postcards & Albums.

LAWN - HAND & GARDEN TOOLS — 2 Lawn-Boy Mowers, Old 5 gal. Gas Can (G.R. Co.), Rubber Tire Metal Wheelbarrow, Old Wood Tool Chest, Car Ramps, Parker Thatcher, Air Horns, Bucksaw, 22' Alm. Ext. Ladder & many other articles not mentioned.

CAR — 1967 Dodge Dart 4 door, 70,000 miles, slant - 6 engine, A/C, AM radio, Current Inspection (recently gone over).

RIDING MOWER — 1994 GT 262 John Deere 17 HP, 48" cut w/power head & bagger — less than 100 hrs.

NO OUT OF STATE CHECKS

JOHN "JACK" M. McCLURE EST.
Virginia M. Nickel, Executrix

Lunch by Salem Sellers UCC Church

JUNIATA CO. 6 1/2 AC. BUILDING LOT AT PUBLIC AUCTION Fri. Eve., Dec. 1, 1995 7:30 P.M.

Property located approx. 2 1/2 mi east of Mifflintown, just off Swamp Rd., BUT WILL BE OFFERED FOR SALE AT JUNIATA MARKETS, Jct of Rts 75 and old 22, at the blinking lights, 1 mi north of Port Royal.

This 6.583 ac property with road ftg on Rt 2001 in Walker Twp., and conveniently located to Mifflintown and Rt 322, MAY BE THE PERFECT SETTING FOR THAT DREAM HOME YOU'VE BEEN PLANNING. There is a newly installed on lot sewage system and the elec. and telephone lines have been run underground. There is also a 40 by 65 ft. pole building.

IF YOU ARE LOOKING FOR A PLACE TO BUILD YOUR DREAM HOME, DON'T MISS SEEING THIS ONE ON THESE SHOW DATES: Sat., Nov. 11 & Sunday, Nov. 12 from 1 to 4 PM each day, and Sat. Nov. 18 and Sunday, Nov. 19 from 1 to 4 PM each day OR CALL (717) 527-2405 for an appt.

TERMS - 10% down at time of sale, balance in 30 days, other terms at sale.

Owners

WILLIAM R. and SHELLEY M. PENGELLY

LONG'S AUCTION SERVICE
Ph. 717-527-2405
Fax 717-527-2941
AU001702L

NOT RESPONSIBLE FOR ACCIDENTS

REDDING AUCTION SERVICE EXCEPTIONAL LAWN & GARDEN AND CHRISTMAS TREE EQUIPMENT JOHN DEERE 5 - WHEELER GATOR LUMBER - TOOLS

The undersigned having moved from area, will sell at public auction - located from Gettysburg, PA take the Mummasburg Road and go 6-miles towa. Arendtsville, PA - (corner Blue Ribbon & Mummasburg Roads) - on

TUES., NOV. 7, 1995 10:30 A.M.

Like new Kubota Model B7200HST - 4-wheel drive diesel tractor - 935 1-owner hours, turf tires with 48" rotary mower; Kubota 1640 loader with 2-way bucket - fits above, etc.; International Cub tractor - hyd. lift - excellent; double mounted spray tanks and pump for Cub; Woods Model 2860 Mow-N-Machine - 60" front mower - like new; excellent John Deere Model 626 AMT 5-wheeler with tilt bed; like new Gravely Model 5665 Professional tractor - front mower and sulky; VN Husquavarna & Sach Dolmar chain saws; like new Century 50-gallon 3 pt. sprayer; VN 2-wheel trailer with tailgate ramp; 2-wheel metal trailer with high sides and Trac Vac 5 HP blower (grass, leaves, etc.); nice 2-wheel metal dump trailer; Brinley 1-bottom, 3 pt. plow; Brinley 2-gang disc harrow; Brinley 1-row cultivator; large lawn roller; 2-VN butcher kettles with 3-legs; Christmas tree trunk boring machine with 3/4 HP motor; large amount square oak tree stands with metal center pin; homemade Christmas tree shaker; Valley 2-wheel tree dolly; lot nice 12-volt back-pack tree trimmers; Reddy 150,000 BTU torpedo heater; metal rubber tire wheelbarrow; 2-wheel trailer; 4-wheel farm wagon; fireplace heater-rola; electric edger; lot VN shop lawn and garden tools; lot small tools for Christmas trees; 7-wood and aluminum stepladders to 8 ft. high; Snapper 4 HP SP rotary mower; LN Shindaiwa B45 brush cutter; Stihl F-581 gas weed eater; Jacobsen gas lawn edger; stainless lawn spreader; metal office desk; Femco gas grill; McCulloch gas blower; log chains; Kubota weights; lot burlap; Hava-Hart traps; hose reels; lot sprinklers; lot metal fence posts; 2-nice 7 ft. double door wood storage cabinets; lot garden hose; lot shutters and doors; 32 ft. wood and 16 ft. aluminum shifting ladders; very nice lot dry white pine lumber - to be sold in lots; other lumber; many other items;

AUCTIONEER'S NOTE - This is one fine lot of equipment - Plan to attend auction. Sale Day Inspection Only.

TERMS - Cash Lunch Truck

OWNER

JACK WAYBRANT

REDDING AUCTION SERVICE
PA LICENSE NO. RH-78-L
Gettysburg, PA - Ph: 717-334-6941