



### WISCONSIN HEAVY DUTY ENGINES

REPLACEMENT ENGINES  
REPLACEMENT SHORT BLOCKS  
Trade-In Available - Large Parts Inventory  
Complete rebuilding

#### NOVEMBER SPECIALS

##### WISCONSIN ENGINES & SHORT BLOCKS

W41770, 35 HP, Elec. Start.....As Low As \$2295.00  
VH4D 30 HP, Elec. Start.....As Low As \$2250.00  
VH4D, 30 HP (Low Hours) Repl. Engine.....As Low As \$745.00

##### WISCONSIN & ROBIN SPECIALS

3 HP - 6-1 Reduction \$250    5 HP - As Low As \$240.00    8 HP - As Low As \$330.00  
3 HP - As Low As \$205.00    11 HP - As Low As \$395.00    8 HP - Electric \$395.00  
9 HP - As Low As \$340.00

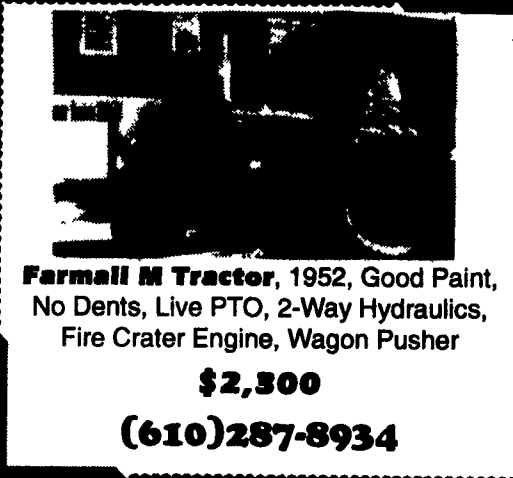
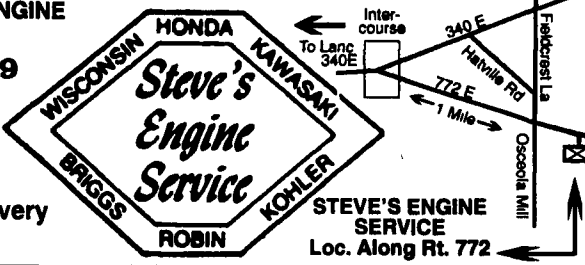
<b>Briggs &amp; Stratton</b>	<b>Tecumseh</b>
2 and 3 HP.....\$95.00	5 HP .....\$185.00
16 HP.....\$550.00	

<b>Honda SPECIAL</b>	<b>Kohler SPECIAL</b>
2.2 HP to 20 HP Engines	6 HP TO 25 HP Engines 25 HP As Low As \$1125.00

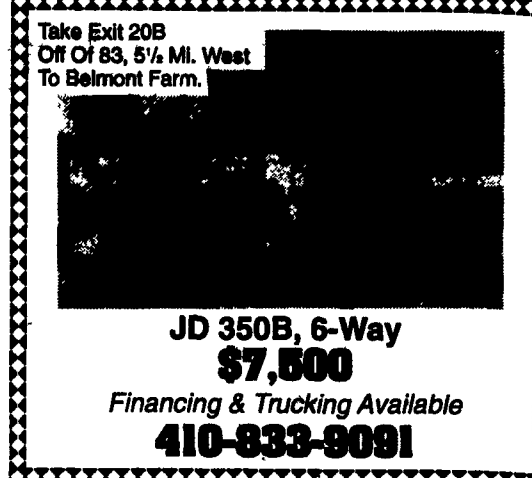
We Also Sell & Service The Following: Tecumseh - Briggs & Stratton  
- Kawasaki - Wisconsin Robin - Onan  
• Industrial: Ford & Continental Engines, Honda, Lincoln, Hobart, Miller Welders • Parts & Service

FOR ALL YOUR ENGINE NEEDS CALL:  
**717-768-7669**  
3918 E. Newport Rd  
Gordonville, PA 17529

■ U.P.S. Daily  
■ Pick-up & Delivery Available



**Farmall M Tractor**, 1952, Good Paint,  
No Dents, Live PTO, 2-Way Hydraulics,  
Fire Crater Engine, Wagon Pusher  
**\$2,300**  
**(610)287-8934**



Take Exit 20B  
Off Of 83, 5/8 Mi. West  
To Belmont Farm.

**JD 350B, 6-Way**  
**\$7,500**  
Financing & Trucking Available  
**410-833-9091**

### YORK COUNTY FARM & INDUSTRIAL EQUIPMENT CO., INC

Box 222 EMIGSVILLE, PA  
(717) 764-6412 OR (717) 764-5115

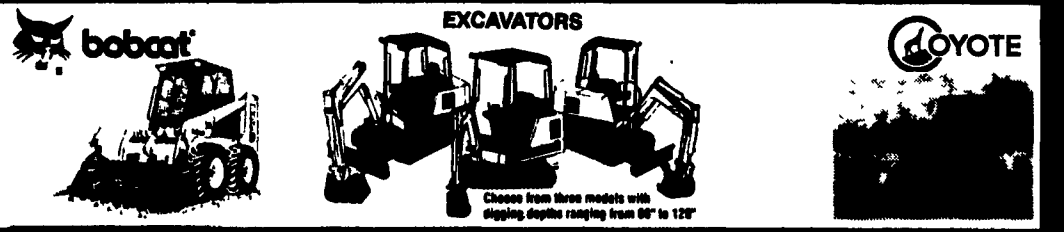


- |   |  |
|---|--|
| <b>TRACTORS</b><br>Kobelco 4 Wheel Articulated Payloader<br>JD 444 Articulated Payloader Ford 2000 (3)<br>Ford 5610 Special II 62hp w/roll bar<br>Ford 5000<br>Ford 3930 45hp w/roll bar<br>JD 650 w/mid mount mower<br>JD 870<br>Kubota L2350<br>Int 886 w/partial cab, WF, dual removers<br>Int 766<br>Int 658 w/WF<br>IH 584 w/loader<br>Int 444<br>Farmall 460 dsl<br>Farmall 130 & 140<br>Farmall 200 w/loader | <b>LOADERS FOR VARIOUS TRACTORS</b><br><b>TILLAGE TOOLS &amp; CULTIVATORS</b><br><b>MISC.</b><br>New 3 pt Snow Blowers<br>New 3 pt. Fert. Spreader<br>3 pt. Stone Rakes<br>3 pt. Box Scrapers<br>Regular & Heavy Duty 3 Pt. Scraper Blades<br>NI 323 IR picker<br>New Woods Rotary Mowers 5' to 15' in stock |
|---|--|
- Large Selection of New Used & Reconditioned Equipment & Tractors

- Case 830 D Std. Good 8195761, \$3,400
  - IH W-400 LP G Runs Good Needs Paint, \$1,400
  - JD 830 D 2852 Low Hrs Good \$5,900
  - IH Super W-6 TA Good Needs Paint, \$2,900
  - IH 650 D Excellent Tire Needs Paint, \$2,900
  - Case 600 D Restored, \$4,500
  - Case 600 D Good Original \$3,200
  - JD 840 Scraper Two 8' Scraper Blades \$4,000
  - Wabco Scraper DPA 2 8' Scraper Blades \$3,500
  - Transfer Case \$1,000
  - Sullair Air Compressor \$2,900
  - Case 580 G \$3,500
  - Case 580 G \$3,500
- CHARM TRACTOR**  
4941 SR 557 Millersburg, OH 44654  
or call (216) 893-9004 eve 6:00 to 8:00

## Evergreen Tractor Co.

41 South Fairlane Ave., Myerstown, PA 17067  
Parts, Sales & Service for Bobcat, Coyote.  
Used Equipment & Skid Loader Rentals



**OPEN: Monday thru Friday 7:30-4:30, Saturday 8 to 12**  
717-866-2585 • 1-800-441-4450  
Complete Line of Bobcat Attachments for Rent  
Used Bobcat Skid Loader Parts



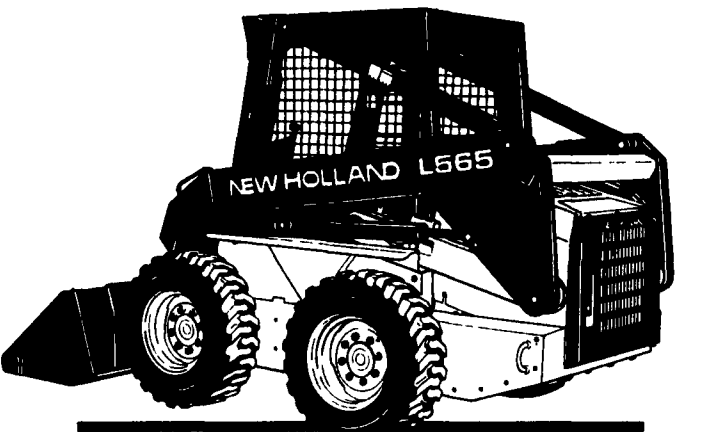
**IH 470 Disc**  
11 Ft., New Blades

**IH 16x7 DD**  
Grass & Fert.

**JD 643 Dorn Head**  
Just out of Field \$4,900

- |  |   |   |
|--|---|---|
| <b>TRACTORS</b><br>JD 7520 3REM, Duals 90% Sharp<br>JD 4010 WF, Rebuilt<br>MF 65 w/Loader<br><b>HAY &amp; FORAGE</b><br>JD 10 Side Mounted Mower Fits 2 Cyl.<br>JD 10 Side Mounted Mower<br>(2) JD 5 1/2 Pickup<br>NH 411 Discbine<br>Oliver Hayrake<br>JD 640 Rake (Dolly Wheel)<br>NH 56 Rake<br>NI 402 Rake<br>IH 445 Baler w/thrower (Sharp)<br>NH 268 Baler w/Ejector<br>NH 489 Haybine<br>NH 495 Haybine<br>JD 336 Baler w/Ejector<br>Heston PT10 Haybine<br>Heston 1014 M.C. Hyd Swing<br>Deutz Aills Rake/Tedder<br>Fahr 4 Star Tedder<br>9' Grimm Tedder<br>JD 385 Round Baler<br>Ford 6 Ft. Flail Mower<br>JD #2 Throwing Complete<br>JD #30 Throwing Complete<br><b>CULTIVATORS</b><br>IH 4500 14 Ft., 3 PT<br>Hinicker 4&6 Row No-Til<br>JD 1100 9' 3 PT<br>JD 1000 18 & 20' Sharp<br>3 Section Drag Harrow<br>McKee 11 & 17'<br>(3) JD RM 4&6 Row<br>JD 18' Field Finisher<br>Taylorway 20' & 24'<br>IH 45 12 & 14' Nice<br>JD (2) Front MTD Cult<br><b>PLANTER/GRAB DRILL</b><br>IH 800 4 Row Planter Nice<br>Int. Drill 18x7 Grass, Fert., D.D.<br>JD 18x7 8300 Sharp | <b>DISCS/PACKERS/MULCHERS</b><br>(2) Brillion 14 Ft. End-Pull<br>J.D. BW 17 Ft. Wing Disc<br>IH 470 12' New Blades<br>AC 2300 9' Nice<br>JD 210 14'<br>JD 235 27'<br>Kewanee 18 Rock Flex<br>Brillion 27 packer<br><b>USED SKID LOADER &amp; ATTACH</b><br>BC 943 2400 Lb H.O.C.<br>BC 642 B, 300 Hrs.<br>BC 66" Utility Bucket (used)<br>75" Industrial Grapple Bucket<br>Round Bale Spears<br>Pallet Forks BC & NH<br>BC 2500 Breaker<br>BC Rototiller<br>New Buckets in Stock<br><b>DISCS &amp; CHISELS</b><br>IH 710 4x16 Spring Reset<br>MF 345 3&4 BTM<br>JD 2500 5 BTM Rebuilt<br>JD 2500 7BTM<br>McCormick 3 Bottom Trailer Plow<br>Artway 12' chisel 3 PT<br>IH 7 & 9 Tooth Pull Type Chisel<br>Landoll 9 Shank Discs Chisel<br>Ford 5x18 On land Spring Reset<br>2500 Add On BTM<br>JD 1610 13 Tooth Chisel<br><b>COMBINE HEADS</b><br>JD 7700 4 WD Turbo Hydro<br>JD 4400 Combine<br>NI 310 Picker<br>JD 643 Corn Head<br>JD 343 Heads<br>JD 653 30" Bean Head \$750<br>JD 13' Grain Platform<br>JD 213 Rigid Sidehill Head<br>JD 215 Flex Nice<br>Woods Header Cart | <b>STALK CHOPPERS &amp; GRAB CANNES</b><br>Brady 144 12 ft. stalk chopper<br><b>INCELLABOON</b><br>Burr Mill Grain Grinder<br>JD 30 2 Row Potato Digger<br>Rollins Basket Attachment<br>JD 48 Loader w/value<br>JD 4400 & 6600 Straw Choppers<br>Hyster Fork Lift 8 Ton<br>CMS Pull-Type 500 Gal. Sprayer, 30 ft. Boom, Foam Marker<br>(2) Century Sprayer w/Boom<br>Wick Weed Wiper 16'<br>(6) Used Buckets & Forks<br>18.4 4x34 Duals<br>HN 791 Spreader T<br>12 ft. Lime Drill<br>JD 16.9" 34 Duals<br>3PT Box Scraper<br>Buster Bars & Scratches<br>CAT 2&3 Quick Hitches<br>Ditch Witch 2200 Trencher<br>Lely 15 Roterra<br>(3) 3 pt Tool Bars w/spring shenks<br>16.9x34 used tires<br>18.4x34 Tire Chains<br>IH Dump Truck<br>JD 240 or 280 Loader Bucket<br>Artway 420 Grinder Mixer<br>Lindsey 80 Compressor |
|--|---|---|

# THE RELIABLE ONE



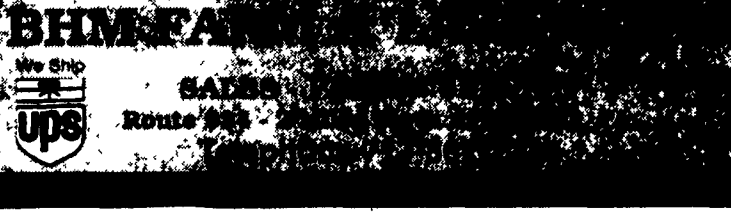
# TOUGHER THAN THE REST

The New Holland Model L565 Super Boom™ skid-steer loader is tougher, more durable and more reliable than ever.  
The "L565" offers a 40 horsepower diesel engine with an SAE load rating of a powerful 1,500 pounds.  
The Pick Up 'n Go™ universal attachment system makes it compatible with New Holland and competitive attachments. The strong boom design and massive loader pins make it more reliable. And the quick engine access makes it easier to service.  
See what makes the Super Boom so tough.



- Quality Used Equipment For Sale**
- |                                       |   |
|---------------------------------------|---|
| • NH L553 Skid Loader                 | • AC 190 XT Tractor   |
| • NH 555 Skid Loader (Ex Cond)        | • JD 950 Tractor  |
| • (2) NH 411 Discbines                | • NH 258 Rake   |
| (Price Greatly Reduced)               | • NH 326 Baler  |
| • NH 495 Haybine                      | • JD 327 Baler  |
| • NH 790 Harvester                    | • NH 190 Spreader   |
| • NH 855 Round Baler                  | • AC2600 16 Ft Disc Harrow  |
| • AC K Combine, 3 RN & 2RW ComHeads   | • NH 355 Grinder Mixer  |
| • AC 7020 Tractor (Engine Overhauled) | • Zimmerman Forage Box, 16 Ft w/Roof Hyd Drive 3 Beaters, 12-Ton Tandem |
| • Farmall "H" (1939)                  |   |

### New Equipment Dealer for...



- NEW & USED PARTS FOR USED BOBCAT SKID LOADER PARTS**
- |                                 |                                   |  |
|---------------------------------|-----------------------------------|--|
| • 2600, 2800, 2700 & 3600 Pumps | • P280 Hydraulic 345 Pallet Forks | • Cultipackers and Roller Harrows (John Deere, Brillion & Kewanee) |
| • 26 and 2800 Harvesters        | • Grain Platform                  | • Combine Corn Head  |
| • Cultivator Parts              | • Grain Drills                    | • JD 1240 & 1280 Planters  |
| • Tip Pumps                     | • Disc Harrows                    | • JD 7000 Planter-Fertilizer Openers                               |
| • JD 672 Rake                   |                                   |  |
- Store Hours  
**PARTS-Mon. Thru Fri. 7:30 A.M. To 4:30 P.M.**  
**Sat. 8:00 A.M. To Noon**  
**SERVICE-Mon. Thru Fri. 8:00 A.M. To 4:30 P.M.**