

SINCE 1936

M.M. WEAVER & SONS, INC.

Leola, PA 17540 Phone: (717) 656-2321

Located: 4 miles West of New Holland on Rt. 23, 1 1/2 miles Northeast of Leola on the No. Groffdale Rd., 1 mile on the right, opposite Groffdale Mennonite Church.



- USED TRACTORS**
- MF 2705 Tractor, 120 HP \$9,500
 - MF 285, 84 HP \$11,000
 - MF 3525, 108 HP \$15,000
 - MF 2675, 100 HP \$11,700
 - MF 253, 48 HP \$14,000
 - MF 1085, 84 HP \$6,500
 - MF 1155 With Cab, 140 HP \$9,500
 - MF 30E With Loader, 700 Hrs. \$19,500
 - MF 275 67 HP \$6,500
 - MF 285 Orchard Model \$8,000
 - MF 375 With Cab \$14,000
 - MF 375 60 HP Rental Model \$19,800
 - JD 2640, 48 Loader 84" Bucket, 70 HP Farmall M w/Rebuilt Engine \$2,000

- USED COMBINES**
- 1991 MF 8460, 6 Row 30" Cornhead, 15 Ft. Flex Head
 - 1980 MF 550 4 Wheel Drive \$19,000
 - 1982 MF 860 With 1163 Corn Head \$22,000
 - MF 8460 Combine, Hillside Cleaning, 6R Cornhead, 15' Floating Bar Head
 - 1980 MF 540, 13 Ft. Float Head, 4 Row 30" Cornhead \$11,000
 - JD 6600 w/13 Ft. Rigid Head
 - 1979 JD 4400, 13 Ft. Soybean Head
 - 1991 Glener R-60 Rotary Combine, 18' Floating Head, 2000 Hrs. \$68,000
 - MF 460, Gas, 13 Ft. Head
 - Gleaner "M" Combine \$6,000

- USED HARVESTERS**
- Claas 695, 6 Row Head, 10' Hay Pickup, Rollermill, 4WD, 1 Yr. Old
 - JD 5200 S.P. Forage Harvester 4 WD, 2800 Hrs., 3RN Corn Head, Hay Head, Nicel. \$25,000
 - Gehl CB-1060 Tandem Harvester, 3 Row, 30" Cornhead, 7 Ft. Hay Pickup, Metal Alert, 2 Yrs. Old
 - Fox Super E SP Forage Harvester With 3 Row 30" Corn Head and 6 Ft. Hay Pickup \$13,500
 - New Idea 709 4WD Uni System With 767 Forage Harvester, 768 w/n Corn Head, 766 Grass Head \$17,000

- HAY EQUIPMENT**
- NII 1495 Diesel Haybine \$7,900
 - Demo Vicon 1511E 5x6 Round Baler \$9,900
 - 5 KM321 Disc Mower Conditioner 10 1/2 Ft. Cut Priced From \$4,900 to \$11,500
 - KM281 Disc Mower Conditioner, 9 Ft. Cut \$4,500
 - Woods RM 500 3 Pt. 5 Ft. Cut Mower \$600
 - Bush Hog 3 Pt. 5 Ft. Cut Mower \$500
 - New! Pequea Hay Tedder
 - Haybuster Tub Grinder \$9,500

- MANURE & FEEDING EQUIPMENT**
- Hydra Spread Push Spreader \$3,900
 - JD 660 Manure Spreader \$1,200
 - S.F.M. 1100 Gal. Liquid Spreader \$3,500
 - Teagle Bale Shredder \$1,900
 - #1830 Oswald-Butler T.M.R. Mixer Wagon
 - Lucknow 285 Mixer Wagon \$8,900

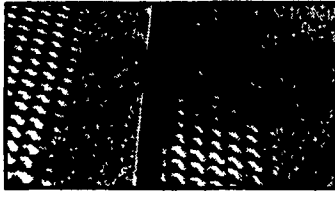
- PLOWS & TILLAGE**
- M&W 5 Tooth V Ripper \$5,700
 - JD Front Mount 4 Row Cultivator \$750

- MISC. EQUIPMENT**
- 10 Ft. Tye No Till Grain Drill \$5,500
 - Pull Type Air Blast Sprayer \$1,700
 - Herd Pull Type 32 Bu. Seeder w/Hyd. Remote Control \$1,500
 - Brady 12 Ft. Flail Shredder \$5,500
 - MF1017 Backhoe for MF 1035 \$3,900
 - 7 Ft. 3 Pt. Scraper Blade \$305
 - 2 EZ Trail Bale Basket @ \$2,600
 - Vicon Feeders, Main Station \$2,500
 - Vicon Feeder, Sub Station \$1,500

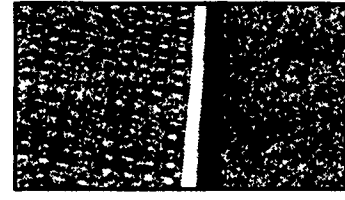


Leveling your hills...

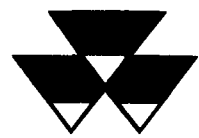
The brilliantly simple Dynamic Hillside Compensation System, optional on MF 8400 conventional combines, gives you "flat land" performance on slopes up to 20 degrees. All automatically. And all at a surprisingly low cost. Stop in today for all the details.



Without Hillside System, crops overload the lower side of the sieve, causing high losses and low sample quality.

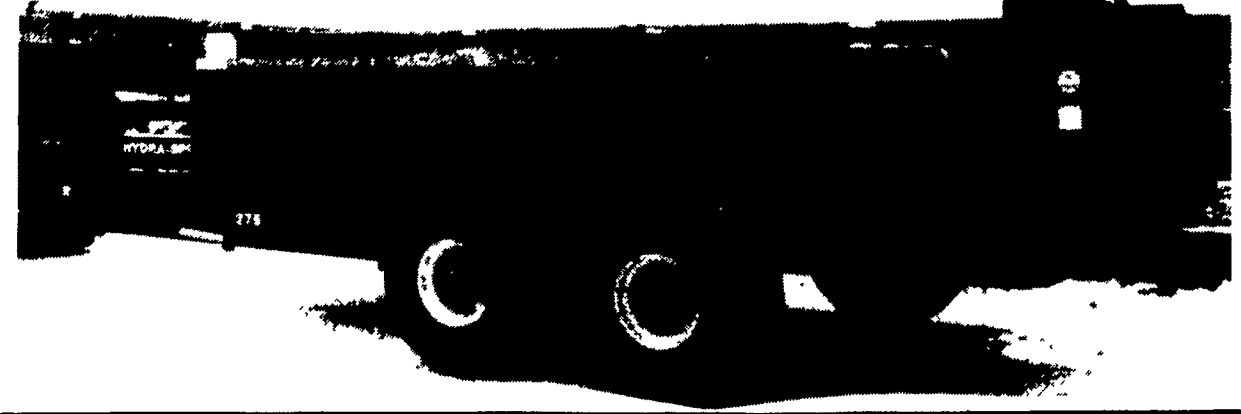


With MF's Hillside System, crops are automatically spread evenly across the sieve for top performance.



MASSEY FERGUSON

HYDRA-SPREAD HYDRAULIC PUSH-GATE MANURE SPREADER



THE NEW MEASURE OF POWER

MF HIGH-PERFORMANCE TRACTORS							
Model	MF 6150	MF 6170	MF 6180	MF 8120	MF 8140	MF 8150	MF 8160
Hp*	86	97	110	130	145	160	180

* Manufacturer's rated PTO hp



MASSEY FERGUSON



Massey Ferguson's new 6100 and 8100 Series tractors have redefined the way tractor power is measured.

They deliver more of their engine horsepower-up to 90% - to your work. As a result, they can equal the performance of some competitive tractors with 10 to 20 more horsepower.

Stop in today and "Experience the Power" of these new tractors with their DynaTorque™ engines, Dynashift transmissions and the largest wet clutch in the industry.