

**International 686 Diesel, 2750 Hours, 15.5-38 Rubber, Gear Drive, Dual Hydraulics, Excellent Condition w/Warranty**

Oliver Cockshutt 1850 Diesel, w/Perkins 2 Spd. Tork, Wide Front End, Extra Nice w/Warranty  
**(717) 949-3769 7:30-5 PM Ask for Dan**

Farmall H w/loader, F-12, runs nice. Parting out: F20. 717-529-2943 8-8:15AM

Farmall Super MTA, 2ph, runs good, \$3500; Farmall W4, runs good, good rubber, live hydraulics, \$2000. 717-278-1910.

Farmall 686 diesel good rubber, work ready, \$4000. 610-932-5576.

Farmall Cub \$1,075. JD 10' transport disc \$775. Brillion 12' cuttipecker, \$950. MF 416 3pt plow \$625. Glenco 10' field cultivator \$795. (610)562-4464.



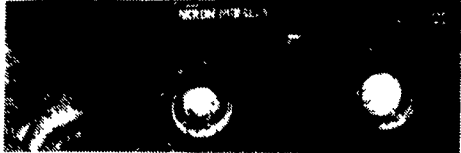
**Farm Motor Oils**  
**PRICE BREAK!**

- SPECIAL DUTY 15W40 ..... \$203.66
- SPECIAL DUTY 30..... \$199.25

**WOLF'S HEAD**

**NOLT'S AUTO PARTS**  
Ephrata (717) 738-1171    Manheim (717) 665-3216    Fivepointville (215) 445-6714

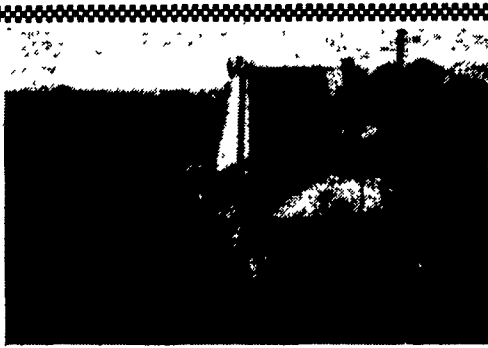
Take Exit 20B Off Of 83, 5 1/2 Mi. West To Belmont Farm.



JD 2240, Late Model, One Owner, 2900 Hrs, LIPTO, 8 Speed, Synchronized Trans., 1 Hyd Outlet, 2 Buckets

**\$13,900**

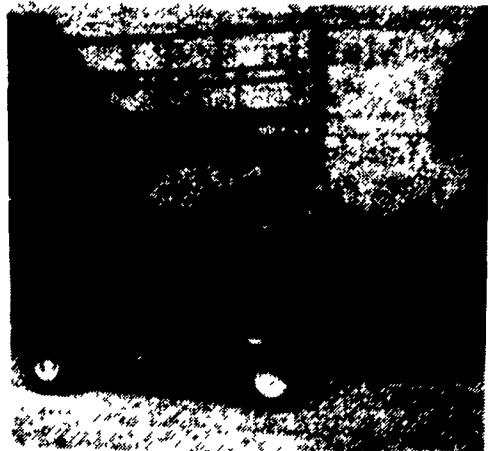
Financing & Trucking Available  
**410-833-9091**



NH555L Skid Loader 1985, All New Rubber  
**\$8,900**

**717-529-2512**

No Sunday Calls



**Wildcat 24' Lift**

Platform 10'x4 1/2' With 4' Extension

**\$4,500**

**717/529-2512**

No Sunday Calls

Farmall Super M w/ mounted picker \$1,700. Bin Wagon, \$350. JD Van-Brunt drill \$500. Int. 3 bot-tom plow, fast hitch, \$200. York County. Call (717)382-4404 or (717)993-6427.

Farmers - Dealers - Your advertising pays for itself when you advertise your equipment in the farm equipment section. 717-394-3047 or 717-626-1164.

Ferguson T020 tractor, excellent condition, live PTO, new tires, must see! 410-239-7434; 410-239-1922.

F Gleaner, 13' soybean floating header, 90% tires, chopper, \$3,950. Larry Stalter "The Combine Man" 1-800-248-2151

FINISHING DISC, Ford 12', like new, \$1,500. 410-833-9091

FLAIL MOWER BRADY 7, pull type, \$500. 410-833-9091

FORD 8700, CAH w/duals, 1,800 hrs., no 3 pt., \$10,000. 410-833-9091

FORKLIFT, Orchard, IH 300, gas w/Henry lift, \$1,850. 410-833-9091

FORKLIFT PETTIBONE 6, gas, ready to work, \$5,600. 410-833-9091

FORKLIFT ROUGH TERRAIN Warner Swasey (Ford 4000 gas tractor) 14', 4,000 lbs., \$3,800. 410-833-9091

FORKLIFT CLARK, gas, 6,000 lbs., 8' pneumatic, \$3,000. 410-833-9091

FOR SALE: Small farm equipment, plows, packers, discs, harrows, mowers, crimpers, tedders, rakes, etc. Trade ins welcomed. NH mowers, rebuilt and guaranteed, engines, hydraulics, crimp hook-ups available. KIRKWOOD REPAIR, 550 Coopers DR, Kirkwood, PA. 17536. 717-529-3299 8AM-8:30AM.

FOR SALE: Two international wheels 18.4x30 axle size 3-3/8" complete with weights, one with 90% tire \$1,000 for set. Adams County, (717)334-6357.

Ford 3pt plow \$185; JD 1450, 6-16" spring trip semi-mount plow, \$650; 1100-24 truck tires and tubes, like new \$60/ea. 717-534-1253.

Ford 800 tractor w/loader, First \$1500; ARPS 3ph backhoe. Call 908-879-5851.

Ford 900 tractor with 602 mounted 2 row Ford corn picker. York Co. (717)741-3039.

Ford rollover plow, 4-bot-tom on-land hitch with coulters, \$1500.00. (215)860-8135.

G1900 Kubota 4 Wheel Steer w/60" Mower Deck, 550 Hours, Good Condition. (717)859-3502.

Gleaner L combine w/636 cornhead and 15' grain head. (412)282-2634.

Gravity bin wagon, 8 ton gear, \$850. Call (717)235-7391.

Grinder mixer, only 5 years old (feed mill), Nome modern mill, Volumetric stationary mill, 49 ton overhead storage. Went out of business, must sell. Must See! Cut feed bills in half. Jacob or Rin 201/694-9114 201/696-8562, Farm-201/694-2551.

HERCULES, CONTINENTAL Waukesha farm, industrial engine parts. M&M Surplus Sales, 807 Zerega Avenue, Bronx, NY 10473, (718)828-9026; fax 828-9651.

Heston 1060 disc mower, good condition. Evenings, (301)998-7232.

Heston 4800 centerline baler, small square, hydraulic drive, thrower, \$4,500. Pequea 710 PTO tedder, \$1,150. Both in VG condition. (717)776-4261.

**Brillion FLAIL SHREDDERS**



**IN STOCK NOW**

• MODEL FSC1805, 15 Ft. With Auxiliary Wheel Kit, End Transport Hitch

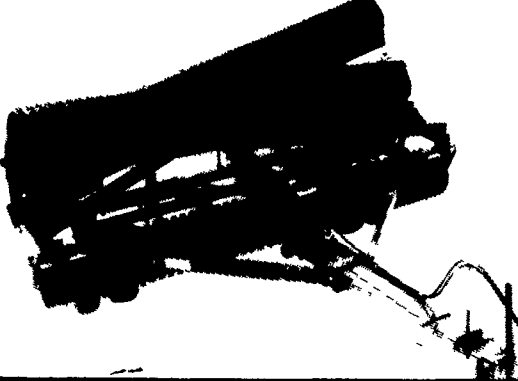
ONE ONLY **\$8,250**

• MODEL FSC1446, 12 Fot With Center Cut Kit

ONE ONLY **\$6,550**

Brillion flails have a heavy 7 gauge hood with full width replaceable wear plates. The individual front baffles are made of tire-casing type rubber. Vented shields protect the belts and pulleys.

**BRILLION PULVERIZERS**



The pulverizer has long been one of the farmer's most valuable tools. When pulled behind a disc or field cultivator the pulverizer will help create an ideal seed-bed with fewer trips across the field.

**IN STOCK NOW**

IN STOCK: 21 ft. X-Fold  
25 Ft. X-Fold  
Save 8% On In Stock Units Purchased By Dec. 1, 1995!



110 South Railroad Ave. New Holland, PA 17557  
**(717) 354-4191**

Monday Thru Friday 7:30-5:00  
Saturday 7-Noon

**BOLTS!**

- Grade 8
- Grade 5
- Plow Bolts
- Lag Screws
- Machine Bolts
- Flat Washers
- Lockwashers
- Nuts
- Locknuts
- And More!!!
- Packaged and Bulk.

**UNIED FASTENING SYSTEMS**  
P.O. Box 372, Lititz, PA 17543  
**(717)627-2717**



**NEW HEAVYWEIGHT CHAMP**

There's a new skid-steer champ and its name is the Model L865 New Holland Super Boom™. The "L865" is built tough all around so it's the most durable, reliable and powerful machine on the market.

It has a 60-horsepower, turbocharged diesel engine for the ultimate in power. And it has a massive 2,200-lb. operating load to pick up where all others leave off. Of course, it has the features you expect from New Holland, such as the best speed, stability, visibility, lift height and dump reach in the industry. Add that to the Pick Up 'n Go™ universal attachment system and there's nothing it can't handle. Stop by today and put the champ to work for you.

**NOW IN STOCK: Model L865 Skid Steer Loader, 60 HP Turbo - SALE \$22,990**

**WE HAVE ATTACHMENTS TO FIT ALL BRANDS OF SKID STEER LOADERS: Bobcat, Gehl, Case, Thomas, Mustang STOP & SEE US TODAY!**

- Bale Spears
- Post Hole Augers
- Grading Rakes
- Pallet Forks
- Power Box Rakes
- Tree Spades
- Backhoes
- Trenchers
- Dozer Blades
- Hyd. Hammers
- Sweepers
- Snow Blowers
- Utility Grapples
- Block Forks
- Skid Feeders
- Cement Mixers

