

**4 BUILDINGS AND SUPPLIES**

**STEEL BUILDING SYSTEM**



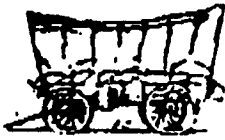
**Save Big on Construction**  
Garages, Mini-Storage Warehouses,  
Industrial Shops and Plants,  
Barns, Horse Arenas, etc.

- Custom sizes & designs
- Call for sizes and prices
- Monthly Specials available on some sizes
- Lifetime Certification on each building

CLEAR SPAN UP TO 250' IN WIDTH (NO VERTICAL COLUMNS OR PILLARS)

**JOHN RICE - LITITZ, PA - (717) 626-4225**

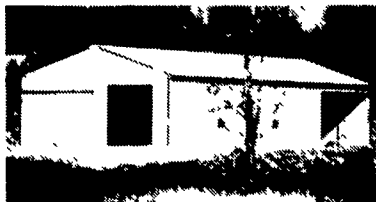
**Conestoga Buildings Inc.**



**Pole Barns**



Commercial



Agricultural



Residential



Municipal

- Complete Building Packages
- Erected or Build Your Own
- Free Estimates or Brochures

1-800-544-9464

(717)354-2613

**Antique Building Material and Hardware.**



Hand Hewn Beams: Oak, Chestnut, Pine.

Assorted Sizes. Excellent.

Siding: Weathered Light and Dark;

Doors: Pine 2, 4, 6 Panels. Many Sizes;

Hardware: Strap Hinges and Box Locks German;  
Window Sashes and Shutters, Paneled and Louvered  
w/Hardware, Various Sizes.

**(717) 665-4345 After 5:30 PM.**

**John Koser's**

FOR YOUR HOME IMPROVEMENT NEEDS

LOCATED NORTH OF ELIZABETHTOWN  
OPEN MON.-FRI. 8 TO 6; SAT. 8 TO 3

- Kitchen Cabinets
- Plywood & Waferboard
- Asphalt Roofing Shingles
- T-1-11 Siding
- GP Insulation
- Railroad Ties
- Shutters
- Replacement Windows
- GP Vinyl Siding

**PRE-HUNG  
STEEL  
ENTRANCE  
DOORS  
32, 36**

**717-367-0283**

**WINDOWS**

**New Construction and Replacement Windows**

Custom built locally in Ephrata, PA, to your specifications. All vinyl windows with 7/8" Thermopane glass.

— FREE ESTIMATES —

**(717) 733-7534**

**KING CONSTRUCTION CO.**

Custom Design and Construction of:

- Pole Barns • Dairy Barns
- Helper Facilities • Horse Barns
- Equipment Sheds Etc.

601 Overly Grove Rd., New Holland, PA 17557

**717-354-4740**

Phil Van Lieu Home: 717-259-9077



**POLE BUILDINGS**

CUSTOM DESIGNED & ENGINEERED

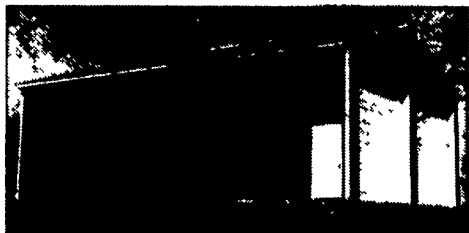
- COMMERCIAL  AGRICULTURAL  RESIDENTIAL
- HORSE BARNs • ARENAS • GARAGES
- IMPLEMENT SHEDS

**BYLER  
CONSTRUCTION  
Delbert Auker**

FREE ESTIMATES

**610-589-2683**

**Side with Alumax ALU-TUFF Steel**



When you put up a building, you expect it to be attractive and to last. A building constructed with ALU-TUFF will meet those expectations. That's because ALU-TUFF is made using top-quality materials, super-tough protective coatings, and a unique rib design that's both functional and attractive.

Years from now when other buildings are starting to show their age, your building will still look good.

- **A STRONG PROFILE**  
High 3/4-inch ribs on nine-inch centers give ALU-TUFF exceptionally high spanning properties for its weight and thickness, while stiffening ribs in flat areas prevent rippling.
- **MADE TO LAST**  
To keep Alu-Tuff working hard and looking good for years to come, we protect it with an oven-cured system of four different coatings.
- **A GREAT LOOKING PANEL**  
You don't have to sacrifice good looks to get a tough steel panel.
- **MORE QUALITY FEATURES**  
Each ALU-TUFF sheet is 38 inches wide to provide 36-inch coverage. That's wide enough to minimize the number of side laps, yet narrow enough to be easy to handle.

**CALL FOR SPECIAL DISCOUNTS**



**1-800-782-2712**

717-776-5951 505 STEELSTOWN RD. - NEWVILLE, PA 17241

**We Now Offer The Most Popular Panel In The Agriculture Industry!**

13 Colors

29 Gauge

*This panel is made by another manufacturer.  
13 delightful colors - Galvanize - Galvalume  
And .018 mill finish aluminum*



**We manufacture Roofing & Siding - Cut To Length**

- 29 Gauge - galvanize, galvalume & 7 colors painted
- 26 Gauge - galvalume & painted white
- .024 Mill Finish Aluminum
- 29 Gauge & 26 Gauge Stainless Steel (Secondary)

- 24 Gauge Standing Seam - Commercial & Residential
- 5" & 6" K-Style Aluminum Seamless Gutter - 32 Colors
- Pre Hung Doors & Windows For Ag Buildings
- Sliding Door Tracks, Hardware & Framing
- Roofing Nails & Screws