

Belleville Poultry

Belleville, Pa.
Wednesday, October 18, 1995
 Report supplied by Auction

Geese: none.
 Turkeys: none.
 Guineas: 4.00 ea.
 Roosters: 2.75-5.50 ea.
 Bantams: .25-1.25 ea.
 Heavy hens: 2.25 ea.
 Silkies: 1.50 ea.
 Muscovy hens: none.
 Muscovy drakes: 5.50 ea.
 Mixed ducks: 3.00-3.50 ea.
 Guinea pigs: none.
 Barn pigeons: 1.75 ea.
 Fancy birds: 3.50 ea.
 Quail: 1.00 ea.
 Peacocks: none.
 Pheasants: 16.50 ea.
 Rabbits: under 4 lbs. 1.00-3.50 ea., 4-6 lbs. 3.60-5.40 ea., over 6 lbs. 5.00-5.25 ea.

New York Egg Market

ATLANTA, GA
OCTOBER 18, 1995

Prices were higher. The market tone was firm. Demand into carton channels was fair to good, best where featured. Food service movement was generally good, and inquiry to fill export needs was brisk. Supplies were generally adequate and held with confidence.

PRICES TO RETAILERS, SALES TO VOLUME BUYERS, USDA GRADE A AND GRADE A, WHITE EGGS IN CARTONS, DELIVERED STORE DOOR, CENTS PER DOZEN.

RANGE EXTRA LARGE 79-81
 LARGE 76-79 MEDIUM 66-69

Westminster Hay

Westminster, Md.
Tuesday, October 17, 1995
 Report Supplied by Auction

132 LOTS.
 ALFALFA: 70.00, 1.00-2.90 BALE.
 TIMOTHY: .50-2.00 BALE, 8.00 ROUND BALE.
 CLOVER: 1.60 BALE.
 MIXED HAY: 92.50, .65-2.00 BALE, 10.00-12.00 ROUND BALE.
 GRASS: .60-2.10 BALE, 30.00 ROUND BALE.
 STRAW: .35-1.60 BALE.

Middleburg Hay

Middleburg, PA
Tues., October 17, 1995
 Report supplied by auction

34 LOADS OF HAY.
 ALFALFA: 85.00-115.00.
 MIXED HAY: 77.50-150.00.
 TIMOTHY: 90.00-105.00.
 STRAW: 1 LOAD, 80.00.
 RYE: 4.00-5.50 BU.
 OATS: 2.00-2.10 BU.

Green Dragon Hay

Ephrata, Pa.
Friday, Oct. 13, 1995
 Report Supplied by Auction

52 TOTAL LOADS.
 MIXED HAY: 12 LOADS, 50.00-140.00.
 ALFALFA: 6 LOADS, 60.00-150.00.
 TIMOTHY: 9 LOADS, 80.00-135.00.
 STRAW: 6 LOADS, 70.00-122.00.
 STUBBLE HAY: 65.00.
 BAR CORN: 11 LOADS, 92.00-110.00, 40.00 AND 90.00 LOAD.
 ORCHARD GRASS: 2 LOADS, 90.00 AND 92.00.
 RYE: 30 BUSHELS AT 5.10 AND 25.71 BUSHELS AT 4.75.
 WOOD SHAVINGS: 192 BAGS AT 1.50.

Leinbach's Hay

Shippensburg, PA
October 14 and 17
 Report Supplied by Auction

36 LOADS.
 ALFALFA: 65.00-134.00.
 MIXED HAY: 84.00-100.00.
 TIMOTHY: 74.00.
 BROME GRASS: 75.00-100.00.
 ORCHARD GRASS: 55.00-82.00.
 STRAW: 65.00-88.00.
 BAR CORN: 78.00-80.00.
 OATS: 2.20 BU.
 MULCH: 37.00-39.00.
 WOOD: 29.00-33.00 LOAD.

National Grain Market

ST. JOSEPH, MO
OCTOBER 18, 1995

Very good export business pushed wheat and corn bids moderately higher and soybean bids soared on fund buying. Wheat 4 to 12 cents higher. Corn steady to 3 cents higher. Sorghum 1 to 5 cents higher. Soybeans 3 to 7 cents higher. That old export optimism began working as Egypt purchased a substantial amount of Soft wheat overnight. Additional sales are pending as hopes continue to support wheat bids. Rains in wheat growing areas slowed planting somewhat and stronger corn and bean bids, underpinned bids. Corn traded lower again earlier in the day as traders opted for a second day of technical corrections to already high bids. However, very good export demand overnight from South Korea and light farmer selling gave corn bids a big boost upward. Early trading began with additional profit taking on the bean board but fund buying took over, pushing bean bids sharply higher. The possibility for rain in the Midwest and continued light farmer selling was also supportive to bids, despite the recent harvest progress. Bean meal demand was slightly stronger.

Export demand: Purchaser Commodity Tonnage Del date Egypt Soft Red Winter Wheat 350,000 Nov/Dec Soft White Wheat 350,000 Nov/Dec South Korea Corn 154,000 Feb/Mar
 Totals: Wheat 700,000 tonnes. Corn

154,000 tonnes. Date Change Year ago
 Truck bids: 10/18/95 10/17/95 10/19/94
 Wheat: Kansas City (HRW, ORD) 5.25-5.26 up 8 4.18-4.20 Minneapolis (DNS, 14%) 5.35 3/4 up 12 4.27 1/2 Portland (SW) 5.19-5.23 up 4-6 4.54-4.57 St. Louis (SRW) 4.91-4.94 up 11 3.80-3.86
 Corn, US 2 Yellow: Kansas City 3.24-3.25 up 3-1 2.15-2.16 Minneapolis 2.92 3/4 up 3 3/4 1.94 1/2 Southern Iowa 3.10 up 3-2 1.94-1.99 Omaha 3.06 up 2-unch 1.92-1.97

Soybeans, US 1 Yellow: Kansas City 6.46 up 5-3 5.28-5.29 Minneapolis 6.15 1/4 up 5 3/4 5.16 1/4 Southern Iowa 6.32-3.35 up 7 5.14-5.17 Cent. IL Processors 6.53 1/4-6.61 1/4 up 7 3/4-3 3/4 5.26 1/4-5.37 1/4

Futures Close: Kansas City (Dec) Wheat 5.14 3/4 up 7 3/4 4.05 1/2 Minneapolis (Dec) Wheat 5.03 3/4 up 10 4.04 1/2 Chicago (Dec) Wheat 4.99 3/4 up 8 1/4 3.97 1/2 Chicago (Dec) Corn 3.25 3/4 up 3/4 2.14 1/2 Chicago (Dec 96) Corn 2.78 1/4 dn 1/4 Chicago (Nov) Soybeans 6.56 1/4 up 3 3/4 5.41 1/4 Chicago (Nov 96) Soybeans 6.65 1/4 up 5 3/4

Export Bids: Barge or rail, Port of New Orleans or North Texas Gulf. US 1 HRW Wheat, Ord. Protein: 5.54 3/4-5.55 3/4 up 3 3/4 4.55 1/2 US 2 SRW Wheat: 5.34 3/4-5.37 3/4 up 9 1/4-10 1/4 4.24 1/2-4.31 1/2 US 2 Yellow Corn: 3.61 3/4-3 62 3/4 up 3/4-dn 1/4 2.41 1/2-2.44 1/2 US 2 Yellow Sorghum: Rail 6.28-6.32 up 1-5 4.15 Barge 6.48-6.50 up 2-unch 4.26 US 1 Yellow Soybeans: 6.92 3/4-6.93 1/4 up 3 1/4-2 3/4 5.65-5.67 1/4



Diffenbach Auction Inc.

100 West Jackson Street • New Holland, Pennsylvania 17557
 Office: (717) 355-7253 • FAX: (717) 355-9547

HAY & GRAIN SALE EVERY MONDAY - 10:00 A.M.

WED	NOV 1	WINROSS TRUCKS & TOYS	6:30 PM
FRI	NOV. 10	FARM EQUIP, TRACTORS & FARM SUPPLIES	9:00 AM
TUE	NOV. 21	QUILT, CRAFT & BUGGIES	9:00 AM
WED	NOV. 22	QUILT & CRAFT	9:00 AM

EQUIPPED FOR AN AUCTION AT YOUR PLACE OR OURS

ALAN DIFFENBACH AUCT. - AU2258-L



Hay And Straw Sales Will Start At 10 A.M. Every Wed.

GOOD'S AUCTION

11 North Maple Ave.
 Leola, PA 17540
717-656-8911
717-656-9558

GOOD'S LIVESTOCK, INC.

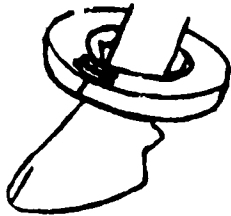


■ Market Hogs ■ Sows
 ■ Boars ■ Cull Pigs



Rt. 897 - 1 mile North of Fivepointville
(717) 445-5776 • FAX (717) 445-6963

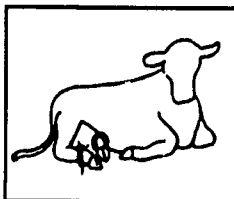
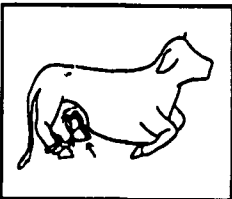
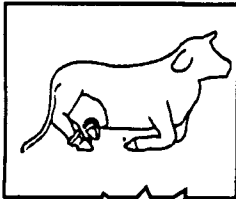
THE END OF TEAT INJURY



"NO SECRETS"
The "TEAT SAVER"

pushes the udder & teat away from the dew claw. Apply two weeks prior to freshening.

This product can be purchased at your local Farm Stores or Feed Mills or by contacting your local animal health centers.



DEALER INQUIRIES WELCOME!

The "TEATSAVER" supplied by
J.B. Supply Ltd.
 Chetek Wisconsin 54728
 For Information Phone (715) 924-2136

NEW HOLLAND SALES STABLES INC. THE ACTION AUCTION

Livestock Is Our Only Business

MONDAY



SLAUGHTER HOGS
EARLY BIRD HOG SALE
7:30 A.M.

Sell Your Hogs At New Holland Sales Stables, Inc
 See them weighed, sold and pickup your check



10:00 A.M.
HORSES
MULES



1:30 P.M.
BEEF SALE
2:30 P.M.
SHEEP, GOATS & CALVES



WEDNESDAY



HEIFER SALE 11:00 A.M.
COW SALE 12:00 NOON



We have the usual run of 50 to 100 Heifers, all ages
 Loads of fresh cows and springers from our regular shippers. Also some local fresh cows and springers

THURSDAY

Beef Auction 10:00 A.M.



BULLS, STEERS,
BEEF COWS

1:00 P.M.
STOCKERS & FEEDERS



11:00 A.M.
GOATS
SHEEP
CALVES



1:30 P.M.
FEEDER PIG SALE



Pigs are accepted after 8:30 A.M. State graded from 8 to 12
 Dairy Barn and Feeder Pig Barn are cleaned and disinfected weekly for your protection

CRAIG'S HOG BUYING STATIONS

Four Locations To Serve You!

Receiving Butcher Hogs:



SHIPPENSBURG
 Wed. & Sat.
 (717) 532-5224

All Stations Open 7:30 am to 11:00 am



GREENCASTLE
 Mon., Wed., Sat.
 (717) 597-2315



MARTINSBURG
 Saturday
 (814) 793-2311

We still Buy Hogs The "Old Fashioned Way"



THOMASVILLE
 Wednesday
 (717) 792-2248

- No Advance Scheduling
- No Consignment Too Small Or Too Large
- Weighed & Paid For Upon Arrival
- Competitive Prices Paid For Light Weight Hogs, Sows & Boars

For More Information Contact Jeff Craig At (717) 532-5224

NEW HOLLAND SALES STABLES, INC.

12 Miles East of Lancaster Off Route 23, New Holland, Penna.

MANAGERS

Norman & David Kolb- 717-597-5538
Field Representatives

Luke Eberly - 215-267-6608 738-1665
 Homer Eberly - 215-267-3047
 Ron Ranck - 717-656-9849

Sale Barn Officer Manager
 Roger Floyd - 717-354-4341
 FAX #717-355-0706

Order Barn:
 Paul Good - 215-445-6662