



**HOG MARKETS**



**HAY & GRAIN MARKETS**

**New Holland Feeder Pigs**

New Holland, PA  
Wed., October 18, 1995  
Report Supplied by USDA  
TODAY: 959 HEAD  
LAST WEDNESDAY: 760 HEAD  
LAST YEAR: 992 HEAD  
TREND: COMPARED TO LAST WEDNESDAY, 25-30 LB. FEEDER PIGS 25.00-30.00 LOWER, 50-70 LBS. 10.00-15.00 LOWER. ALL PIGS WEIGHED ON ARRIVAL AND SOLD BY THE HUNDRED WEIGHT.  
GRADE 1-2: 121 HEAD 33-36 LBS. 70.00-82.00, WEIGHTED AVERAGE 34.66, WEIGHTED PRICE 73.49; 236 HEAD 41-47 LBS. 64.00-74.00, WEIGHTED AVERAGE 42.98, WEIGHTED PRICE 69.45; 114 HEAD 50-55 LBS. 72.00-80.00, WEIGHTED AVERAGE 52.63, WEIGHTED PRICE 77.68; 66 HEAD 63-66 LBS. 62.00-68.00, WEIGHTED AVERAGE 66.31, WEIGHTED PRICE 66.31; 14 HEAD 76 LBS. 69.00, WEIGHTED AVERAGE 76.00, WEIGHTED PRICE 69.00.  
US#2: 23 HEAD 27-29 LBS. 60.00-64.00, WEIGHTED AVERAGE 28.57, WEIGHTED PRICE 62.60; 35 HEAD 34-39 LBS. 60.00-64.00, WEIGHTED AVERAGE 36.43, WEIGHTED PRICE 61.92; 39 HEAD 44-46 LBS. 58.00-60.00, WEIGHTED AVERAGE 44.97, WEIGHTED PRICE 59.00; 16 HEAD 54-57 LBS. 66.00-68.00, WEIGHTED AVERAGE 55.31, WEIGHTED PRICE 67.10; 15 HEAD 95-96 LBS. 54.00-56.00, WEIGHTED AVERAGE 95.27, WEIGHTED PRICE 54.54.  
US#2-3: 26 HEAD 34-36 LBS. 52.00-54.00, WEIGHTED AVERAGE 34.31, WEIGHTED PRICE 53.68; 8 HEAD 46 LBS. 54.00, WEIGHTED AVERAGE 46.00, WEIGHTED PRICE 54.00; 21 HEAD 52 LBS. 64.00, WEIGHTED AVERAGE 52.00, WEIGHTED PRICE 64.00; 12 HEAD 70 LBS. 41.00, WEIGHTED AVERAGE 70.00, WEIGHTED PRICE 41.00.  
ALL PIGS CONSIGNED TO WED. FEEDER PIG SALE MUST ORIGINATE FROM A QUALIFIED NEGATIVE OR MONITORED HERD.

**State Graded Feeder Pig Sale**

Carlisle Livestock Market, Inc.  
Friday, October 13, 1995  
RESULTS ON 929 PIGS.  
TREND: VERY STRONG DEMAND! COMPARED TO FRIDAY, SEPT. 27, PIGS WERE MOSTLY 4.00-10.00 HIGHER. ALL PIGS WERE WEIGHED ON ARRIVAL AND SOLD BY THE HUNDRED WEIGHT.  
US #1&2: 645 HEAD, 102 HEAD 45-49 LBS. 88.00-96.00; 154 HEAD 50-59 LBS. 76.00-94.00; 196 HEAD 60-69 LBS. 73.00-80.00; 120 HEAD 75-79 LBS. 70.00-71.00; 73 HEAD 82-89 LBS. 63.00-67.00.  
US#2: 217 HEAD, 77 HEAD 36-49 LBS. 83.00-93.00; 71 HEAD 52-59 LBS. 72.00-81.00; 63 HEAD 63-69 LBS. 72.00; 6 HEAD 70-79 LBS. 65.00.  
US#2-3: 38 HEAD, 13 HEAD 42-49 LBS. 76.00; 25 HEAD 56-59 LBS. 59.00-63.00.  
AS IS AND UTILITIES: 29 HEAD 40-90 LBS. 11.00-61.00.  
NEXT STATE GRADED FEEDER PIG SALE FRIDAY, OCT. 27. RECEIVING 7-11 A.M. SALE AT 1:30 P.M. SHARP!

**New Holland Hogs**

LANCASTER, PA  
OCTOBER 16, 1995  
TODAY 1649  
LAST MONDAY 1191  
LAST YEAR 997  
TREND: Compared to last Monday barrows and gilts 1.00 lower. US 1-2 210-260 lbs 47.50-48.50 US 1 230-255 lbs 48.50-49.00 21 head 241 lbs 49.75 US 1-3 210-270 lbs 46.00-47.50 270-295 lbs 44.00-46.00

**Lancaster Hogs**

Lancaster Stockyards  
Saturday, Oct. 14, 1995  
Report supplied by auction  
There will no longer be a sale auction on Saturday. Sales will be held Monday and Wednesday.

**Vintage Hay**

Paradise, PA  
Thurs., October 19, 1995  
Report Supplied by Auction  
MIXED GRASS: 60.00.  
STUBBLE HAY: 60.00.  
ALFALFA: 125.00.  
SALE TIME 1 P.M.

**Indiana Hogs**

SPRINGFIELD, IL  
OCTOBER 19, 1995  
Barrows and Gilts: mostly .50 lower at the country buying stations. Demand light to moderate for a moderate to heavy run. Country Plants US. 1-3 230-260 lbs. 44.00-45.50, few 46.00 45.00-47.00 US. 2-3 230-260 lbs. 39.00-44.00 210-230 lbs. 34.50-39.00  
Sows: Under 500 lbs. 1.00 lower; over 500 lbs. 2.00-3.00 lower. US. 1-3 300-450 lbs. 33.00-36.00 450-500 lbs. 36.00-40.00 500-600 lbs. 40.00-45.00 few over 600 lbs. 42.00-45.00  
Boars: 30.00-34.00  
Preliminary estimate: 38,000

**Middleburg Hog Report**

Middleburg, Pa.  
Monday, October 16 & 17, 1995  
Report supplied by FDA  
276 HEAD...BULK OF SUPPLY SOLD ON MONDAY AND REPORTED BY THE AUCTION. BARROWS AND GILTS 2.50 LOWER, SOWS STEADY. BARROWS AND GILTS: US#1&2 230-260 LBS. 47.00-48.50, US#1&3 230-265 LBS. 45.50-49.00, US#2&3 200-270 LBS. 38.50-45.00.  
SOWS: US#1&3 400-475 LBS. 34.00-37.00, 500-570 LBS. 36.50-38.00; US#2-3 325-400 LBS. 34.00-36.00.  
BOARS: ALL WEIGHTS 32.25-33.00.

**North Jersey Market**

Hackettstown, N.J.  
Report Supplied by Auction  
Tuesday, October 10, 1995  
Hay—Straw & Grain Report  
ALFALFA: 2 LOTS, 1.80 AND 3.50/BALE.  
STRAW BARLEY: 1 LOT AT 1.80/BALE.  
MIXED HAY: 6 LOTS, 2.30-3.00/BALE.  
TIMOTHY: 3 LOTS, 2.30/BALE.  
GRASS: 8 LOTS, 1.50-2.60/BALE.  
WHEAT STRAW: 2 LOTS, 1.40 AND 1.80/BALE.  
OAT STRAW: 1 LOT AT 1.80/BALE.  
EAR CORN: 1 TON AT 90.00.  
SHELLED CORN: BY THE BAG, 1 AT 4.00.  
RYE: BY THE BAG, 1 AT 6.00.  
CORN SCREENINGS: BY THE BAG, 1 SPLIT AT 3.00 AND 4.00.  
FIREWOOD: 1 LOAD AT 40.00.  
SHRUBS: 1 LOT, 8.00 EACH.  
29 LOTS.

**Regional Hay**

October 16, 1995  
Eastern, Pa.  
HAY & STRAW MARKET FOR EASTERN PA. (ALL HAY NO. 2 AND BETTER. PRICES PAID BY DEALERS AT THE FARM & PER TON.) HAY & STRAW STEADY TO 5.00 HIGHER.  
ALFALFA 70.00-105.00; MIXED HAY 50.00-100.00 FEW REPORTED 120.00; TIMOTHY 50.00-110.00 FEW REPORTED 120.00; STRAW 50.00-80.00; MULCH 25.00-45.00.  
SUMMARY OF LANCASTER CO. HAY AUCTIONS FOR WEEK ENDING 10/13/95. PRICES PER TON: LOADS: 133 HAY, 31 STRAW & 25 EAR CORN. ALFALFA 92.00-150.00; MIXED HAY 75.00-140.00; TIMOTHY 75.00-137.00; STRAW 68.00-92.00; EAR CORN 89.00-115.00.  
SUMMARY OF CENTRAL PA. HAY AUCTIONS FOR WEEK ENDING 10/13/95. PRICES PER TON: LOADS: 107 HAY, 15 STRAW & 23 EAR CORN. ALFALFA 70.00-130.00; MIXED HAY 65.00-120.00; TIMOTHY 69.00-81.00; STRAW 60.00-82.50; EAR CORN 75.00-92.00.

**Diffenbach Auction Center**

New Holland, Pa.  
Monday, October 16, 1995  
Report Supplied by Auction  
TOTAL LOADS: 94.  
ALFALFA: 110.00-145.00.  
MIXED HAY: 87.00-142.00.  
TIMOTHY: 105.00-190.00.  
ORCHARD GRASS: 80.00-125.00.  
STRAW: 51.00-82.00.  
EAR CORN: 75.00-103.00.  
OATS: 2.00-2.15.  
FIREWOOD: 27.00-145.00.

**Kutztown Produce Auction**

Report Supplied by Auction  
Saturday, October 14, 1995  
TOTAL LOADS: 4.  
ALFALFA HAY: 60.00.  
MIXED HAY: 92.00.  
TIMOTHY HAY: 115.00.  
WHEAT STRAW: 62.00.  
FIREWOOD: 25.00-65.00.

**Greencastle Livestock Market**

Oct. 12 and 16  
Hay & Straw  
Report Supplied by Auction  
16 LOADS.  
ALFALFA: 55.00-129.00.  
MIXED HAY: 84.00-90.00.  
TIMOTHY: 84.00-90.00.  
MIXED HAY: 57.00-87.00.  
ORCHARD GRASS: 60.00-61.00.  
BROME GRASS: 62.50.

**Good's Hay**

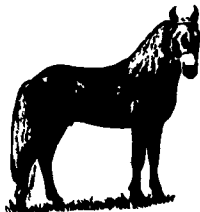
Leola, Pa.  
Wed., October 18, 1995  
Report Supplied by Auction  
TOTAL LOADS: 40.  
MIXED HAY: 65.00-142.00.  
STRAW: 85.00-105.00.  
TIMOTHY: 90.00-122.00.  
CORN: 93.00-115.00, NEW 77.00-86.00.  
ALFALFA: 97.00-125.00.  
GRASS: 82.00-102.00.

**Belleville Hay**

Thursday, October 19  
Belleville, PA  
Report Supplied by Auction  
SHELLED CORN: 1 LOAD, 95.00.  
EAR CORN: 87.50-105.00.  
ALFALFA HAY: 87.50-120.00.  
MIXED HAY: 21 LOADS 50.00-102.50.  
STRAW: 7 LOADS, 40.00-82.50.

**Dewart Hay**

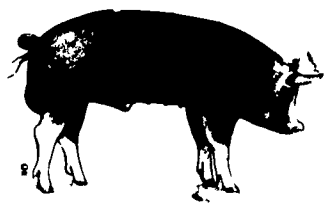
Dewart, PA.  
Monday, October 16, 1995  
Report Supplied by Auction  
8 LOADS OF HAY, 54.00-125.00.  
STRAW: 1 LOADS AT 60.00.  
WOOD: 4 LOADS, 25.00-47.00 LOAD.  
CORN: 4 LOADS, 79.00-89.00.  
OATS: 1.70 AND 1.80 BU.



**PIGS**  
STATE GRADED SALE  
FRIDAY  
OCT. 27  
1:30 P.M.  
AT  
**Carlisle**  
LIVESTOCK MARKET, INC.  
Exit 12 Off I-81 turn South  
(717) 249-4511 or  
Evenings Jim, 249-2359

**KIRKWOOD HAY AUCTION**  
Hay, Straw and Grain Auction  
EVERY TUESDAY  
11:00

Located Rt. 472 5 miles south of Quarryville or 6 miles north of Oxford corner of Rt. 472 and Noble Road.  
Lloyd H. Kreider, Auctioneer  
AU-000513L  
No out of state checks



**PENNFIELD GRAIN BANK**

Pennfield Offers A Sound Program For The Dairy Farmer To Use His Grain "Same As Cash" To Reduce His Monthly Feed Bill And To Avoid Having To Take "Harvest Price" For His Grain

Prices Week Of 10/23/95  
Corn \$3.40 Bu.  
Soybeans \$6.30 Bu.  
Barley \$2.35 Bu.

- No Storage Charges
- Prices Updated Weekly
- Grain Bank Balance Shown On Each Invoice
- No Hidden Charges

For every ton of qualifying dairy feed purchased you will receive one ton of grain back hauled at no charge



Walter M. Dunlap and Sons offers all cattle feeders two marketing days. Give us a call for advice and marketing conditions.

**MONDAYS OR WEDNESDAYS**

Consign With Us - For The Marketing Edge

**Wednesday, October 25 - 12 Noon**

- Load of Holsteins Steers out of New England States Weighing 500 to 600 Lbs.
- Load of Mix Color Steers out of Chester Co. Weighing 700 to 900 Lbs.
- Load of Angus Calves out of Maryland Steer & Heifers Weighing 400 to 500 Lbs.
- Load of 53 Angus & Charolais Cattle out of Maryland Weighing 700-900 Lbs.

- 200 Head of Other Local Cattle -

**NEXT FEEDER CATTLE SALE**

Wednesday, Nov. 1 - 12 Noon

**Walter M. Dunlap and Sons**

Lancaster Stockyards  
Tel. (717) 397-5136

An Old Line Commission Firm Keeping Abreast With The Times

**INDEX**

Four Sections

**DEPARTMENTS**

- Editorial ..... A10
- Features ..... A16
- Farm Calendar ..... A31
- Mailbox Markets ..... B19
- Sale Reports ..... B21
- Public Auction Register ..... B28
- Business News ..... C 6
- Classified Ads ..... C 9, D 5

**FEATURES**

- Berks Extension Review ..... A27
- Manheim Livestock ..... A28
- Mifflin Co. 4-H ..... A29
- State Grange ..... A30
- Moldy Feeds ..... A32
- Farm Bureau ..... A32
- Penn State Advisory ..... A33
- Forage Conference ..... A33
- Lebanon Farm Women ..... B 2
- Outstanding Club ..... B12
- Fair Wrap-Up ..... B14
- Franklin Co. Beef ..... C 8
- Eastern National Angus ..... D 4

**COLUMNS**

- Now is the Time ..... A10
- Plain Perspective ..... A23
- Ida's Notebook ..... B 4
- Taking Time ..... B 7
- On Being A Farm Wife ..... B 9
- All Gardens ..... B15
- Poultry Pointers ..... C 2

**DAIRY**

- DHIA Focus ..... A31
- Crawford DHIA ..... A36

**HOME AND YOUTH**

- Homestead Notes ..... B 2
- Home On The Range ..... B 6
- Cook's Question Corner ..... B 8
- Kid's Korner ..... B10
- 4-H Happenings ..... B16
- Farm Women Societies ..... B17
- You Ask, You Answer ..... B27