

Berks Extension Reviews Year's Accomplishments

LOU ANN GOOD

Lancaster Farming Staff

LEESPORT (Berks Co.) —

In recapping the year's activities of the Berks County Cooperative Extension Association, Judith Schwank, director, said that the extension's goal is to educate and to gain knowledge to put to work everyday.

Exactly how the extension's goal is carried out was presented to more than 200 who attended the annual banquet on Monday night. It was the 81st annual meeting, which was held in the Berks County Agricultural Center in Leesport.

The program included a synopsis of the work each of the staff members do throughout the year.

In working with the master gardener's program, Schwank established a horticultural therapy program at the Berks Women in Crisis shelter. With the help of summer intern Olga Cosme, the extension developed ways to work with Hispanic clientele.

Jonda Crosby, Regional Infrastructure to Sustain Agriculture (RISA) project associate, worked on projects with innovative farm practices that address farm issues. Two grower-only markets were established as an outlet for produce.

Debbie Dietrich, dairy and livestock agent, began a 4-H pet club to teach children responsible pet care.

Rick Kauffman, 4-H coordinator, oversaw the 4-H Fashion Revue. Winners in the county provided a fashion show as part of the entertainment at the annual meeting.

Clyde Myers, dairy-livestock

agent, sought solutions for fly control other than using pesticides.

Fay Strickler, extension home economist, provided leadership to the Expanded Food and Nutrition Education Program, instructed day care providers, provided parenting resources, and taught safe food-handling courses.

Mena Hautau, agronomy-agriculture agent, researched mushroom compost used to grow field corn. Intensive grazing programs and field days were held.

Stephen Krupa, president of the board of directors, said that despite the extension's long-term work in the area, some confusion exists. Those unacquainted with extension services are not aware what it represents.

The board will concentrate on establishing a "signature." He asked, "Who are we? Are we Berks County Agricultural Extension? Are we Penn State Extension? What does Cooperative Extension mean?"

Krupa thanked the three county commissioners in attendance for their strong support of extension services.

Schwank spoke of the changes spurred by a civil rights assessment of extension services. She said, "In order to continue, the program must continue to change and evolve. We are on the road to excellence and will continue to change to be more relevant."

Board member nominees elected by an unanimous ballot board include Pheobe Bitler, Carol Duncan, Larry Eshelman, Nipa Hammond, and Erica Davis.

Earl Fake provided a slide show about covered bridges in Pennsylvania.



Newly elected board members for the Berks County Extension are Nipa Hammond, Carol Duncan, Judy Schwank, Erica Davis, Larry Eshelman, and Karen Mohn.



Berks County Extension staff includes from left front row: Beth Hartman, program assistant; Donna Heffner, secretary; Lisa Hetrick, secretary; Sheila Clouser, and secretary. Second row: Mena Hautau, agent; Jonda Crosby, association; Clyde Myers, agent; Tom Contricciiano, multi-county agent; Judith Schwank, director; Sue Eddinger, secretary; and Deb Dietrich, agent.

Foot Problems Topic Of Barn Meeting

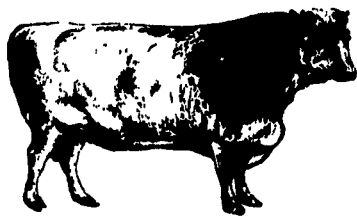
LANCASTER (Lancaster Co.)—There is a lot of truth in the statement that a cow is only as good as her feet and legs.

Foot problems are a concern of many dairy farmers, and a barn meeting has been scheduled to discuss these problems.

The barn meeting will be held at 1 p.m. on Friday, Oct. 27 at the farm of Gordon Hoover, Gap. The farm is located at 165 Cambridge

Rd., about 3/4 mile north of Route 340.

The purpose of the barn meeting is to help dairy farmers learn more about foot structure, weight distribution, foot infections and diseases, corrective and preventive trimming, and general hoof care. The presentations and demonstrations will be given by Penn State veterinarian Dale Moore and by Myron Nolt, a hoof trimmer from Peach Bottom.



BUCKS FOR BEEF.

Introducing our new
LIVESTOCK FINANCING PROGRAM

featuring loans for
• feeder steers
• dairy cows

D Dauphin Deposit Bank
Agri-business Unit

EQUAL OPPORTUNITY
LENDER

(717) 355-8270

Member FDIC



*"It's great to be part of the team at ADC that produces a quality product and stands by its farmers."
—Levi & LuAnn Ransom
Nicholson, PA*

ADC Is the Place To Be

Quality milk and support of its members — the outstanding benefits that Levi and LuAnn Ransom refer to — are among the strengths of the premier dairy cooperative in the region.

Atlantic Dairy Cooperative has a 78-year history of excellent service to its members. Financially strong, ADC guarantees a market for all member milk and excels in maximizing returns. ADC is a leader in providing equity payments, quality bonuses and over-order premiums to members.

Nearly 4,000 dairy farmers agree that "ADC is the Place to Be."

For free information on how you can secure the future of your dairy farm operation, write or call:

Atlantic Dairy Cooperative
1225 Industrial Highway
Southampton, PA 18966
1-800-645-MILK

