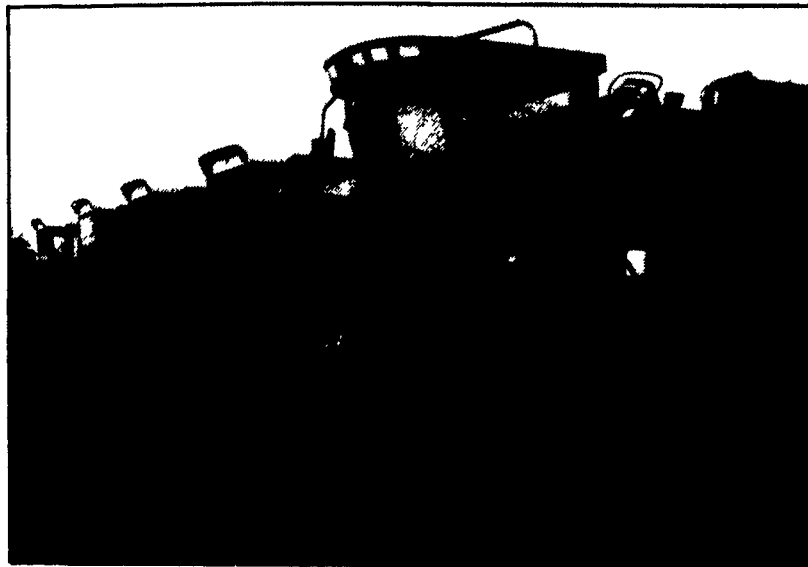


# **CASE IH Axial Flow Combines - PRODUCTIVITY NEVER THOUGHT POSSIBLE!**



The 2100 Series Axial Flow Combines are simply designed to harvest crops in record-setting time. Who would have ever believed that results like these would ever be possible?



- Harvest 805 Acres of corn and 52 Acres of Soybeans in 100 Hours.
- Harvest 13.3 Acres of Corn that Averaged 160 Bushels per Acre in One Hour.
- All with very little field loss.


You can accomplish similar results when you purchase a new 2100 series combine from Hoobers - the people who know how to get maximum productivity from your combine...

Demand for 2100 Series has led to many late Model Trades - both Axial Flow and John Deere. If you can not afford a new combine, check out our great selection of pre-owned machines. We have a machine to fit your operation and budget.

**INTERCOURSE**  
(717) 768-8231

**MIDDLETOWN, DE**  
(302) 378-9555




**C.B. HOOBER & SON INC**  
TWO LOCATIONS

**All New & Used Products  
Backed By  
Hooper Parts & Service**

Authorized UPS Station

© 1995 CASE CORPORATION  
Case IH is a registered trademark of Case Corporation




## QUALITY USED EQUIPMENT IN STOCK


<p><b>USED TRACTORS</b></p> <p>IH 5488 Tractor, 1982 Yr, 20 8x38 w/Duals, 5340 Hrs w/Rebuilt Eng. (W9229)</p> <p>IH 1086 Tractor, 1976 Yr, 20 8 38 w/Duals, 2 Hyd Valves, 540/1000 PTO, AC, Heat, Radio (W9190)</p> <p>IH 1086 Tractor, 1980, w/Recon Engine (W9801)</p> <p>IH 1566, 1976, 6113 Hrs, 20 8x38 Tires, 2 Hyd Valves, 3 pt (W9321)</p> <p>IH 1026 Hydro, 1970, Cab, 20 8x38 Tires, 1 Set of Rear Wts (W9679)</p> <p>IH 1206 Tractor, 18 4x38 Tires, 10 Front Wts, 1 Set of Rear Wts (W9472)</p> <p>IH 1566 Tractor, 1976 Yr, 1000 PTO, 3 Pt Hitch, 20 8x38, ROPS (W9045)</p> <p>Case 1370 Tractor (W8947)</p> <p>Hesston 60-66 2WD, WFE, 540 PTO, 3 Cyl, 16 9x30 Rear Tires, Canopy (W8350)</p> <p>IH 1566 Tractor, 1976 Yr, "As Is" Condition (W9206)</p> <p>IH 1566, 6000 Hrs, Diesel, 2 WD, Cab (W8757)</p> <p>IH 986 Tractor, 3800 Hrs, 18 4x38 Rear, 3 Sets of Rear Wts (W9335)</p> <p>IH 826 Hydro Tractor (JB/MGF)</p> <p>CIH 885 Tractor, 1987, 2631 Hrs, Cab w/ AC, w/2255 Loader, 18 4x30 Rear Tires, 2 Hyd Valves, Top Link (W9807)</p> <p>CIH 5240 MFD Tractor, 1993, 831 Hrs, 18 4x38 &amp; 14.9x24 Tires, 3 Pt Hitch (W9883)</p> <p>CIH 7110 2WD Tractor, 1990, 1552 Hrs, 18.4x42 Tires, 3 Valves, 3 Pt Hitch, AM/FM Radio, 18 Wts, Exc Cond. (W9739)</p> <p>CIH 7120 MFD Tractor, 1991, 1260 Hrs, 18 4x42 Tires, 4 Valves, 3 pt Hitch, 18 Wts., AM/FM Radio, Warr to 5/96 (W9742)</p> <p>CIH 7140 MFD Tractor, 1991, 1025 Hrs., 18.4x42 Duals, 3 Valves, 18 Wts, AM/FM Radio, Warr to 5/96 (W9740).</p> <p>CIH 7250 MFD, 1994, 88.5 Hrs, "Mark 50" Edition, 20 8x42 Duals, Heat/AC, Radio (W9699)</p> <p>IH 1586, 3300 Hrs., 20.8x38 Duals, Cab w/AC &amp; Heat (W9334)</p> <p>AC 714D, 1982, 900 Hrs., Loader w/Bucket (W9404)</p> <p>IH 1486, 3815 Hrs, Cab, Diesel, 10 Front Wts., 20 8x38 Rears (W9626)</p>	<p>IH F706D, 1964, Front Wt Brkt, 18 4x38 Rears, 2 Hyd Valves (W9648)</p> <p>Ford 9600 2WD Tractor, 3547 4 Hrs, 11 Frnt Wts, 11 00x16 &amp; 18 4x38 Tires (W9811)</p> <p>Steiger PT225 Tractor, 1979, 2600 Hrs, 18.4x38 Duals, AM/FM Radio, 4 Hyd Valves (W9821)</p> <p><b>USED HAY &amp; FORAGE</b></p> <p>IH 600 Blower (U8214)</p> <p>IH 1490 Mower Conditioner, 12', Hydro-Swing, Tior Rolls (U9857)</p> <p>CIH 8830 Windrower w/12' Auger Header</p> <p>NH 499 Haybine, 12' Cut, Hydro Swing, 3" Knife w/Guards (U7899)</p> <p>JD 1508 Batwing 15' Cut Mower (V8509)</p> <p>JD 336 Baler (U9859)</p> <p>NH 28 Blower (U9728)</p> <p>NH 565 Baler (U9540)</p> <p>Vicon KM321-10 5' Disc Mower Conditioner (U9731)</p> <p>Krone Neimeyer KR130 Round Baler, Mesh Wrap Attach, 4'x4' Bale (U9636)</p> <p>Hesston 4600 Baler (U8893)</p> <p>Hesston 4800 Big Baler (U9553)</p> <p><b>USED FIELD CULTIVATORS</b></p> <p>Krause 4133 Field Cult, K-tines (T6863)</p> <p>White Field Cultivator (T8614)</p> <p>IH 45-12 5' Vibra-Shank Field Cultivator (T9600)</p> <p><b>USED MISC.</b></p> <p>10' Dozer Sub-Frame for Steiger Tractor (V9581)</p> <p>DMI Crumbler, 18 Ft (T8375)</p> <p>Krause Fertilizer Caddy (V9077)</p> <p>Ag-Chem 250 Gallon Saddle Tanks (V7789)</p> <p>FMC/Bean 600 Gallon Trailer Sprayer (V9288)</p> <p>Bush Hog 20' Batwing Mower w/Laminated Tires ('9289)</p> <p>IH 1350 Grinder Mixer (V9452)</p> <p><b>USED DISCS</b></p> <p>CIH 475 Disk, 18', Rockflex, 7.5 Spacing, 9.5L 14 Duals, Blades, FT-18" RR-19" (T9713)</p> <p>IH 496-18' Disk, Rockflex, 21" Notched Blades, Duals, 9" Spacing (T9813)</p> <p>Krause 4912 Disc, Cut Width 18'7", Rigid Bearing Arms, 21" Blades (T9138)</p> <p>Krause 4927 Disc, 25' Rockflex, Good Blades (T9456)</p> <p>Krause 1912 18' Disc, Blades: Front 21" Rear 21 1/4", Duals, Midwest Buster Bar (T9546)</p> <p>Krause 2242 Disc, Blades: Front 18 5" Rear 19", Spacing 9/4, Rockflex, Cyl/Hoses, Duals, Regreasable Bearings (T9944)</p> <p>IH 350 10' Disk, 9 1/2" Spacing, Rigid, Blades 17 5" - Front 9 18" Rear (T9834)</p> <p>JD 210 12' Disc, 9" Spacing, Rigid, Cyl/Hoses, 20" Blades (T9528)</p> <p>JD 235 Disc, 20' Cut, Single Fold, New Blades (T8709)</p> <p>Krause 1577 Disc, 18" Blades, 9" Spacing, Rockflex (T9557)</p> <p>Krause 2413 Disc 23' Cut, New Blades (T8292)</p> <p>Krause 4926 Disc, Rockflex w/Scrapers, 9" Spacing (T7653)</p> <p>Krause 1927 Rockflex Disc 25' Cut Width 22" New Blades (T8222)</p> <p>Krause 4927 Disc (T9598)</p> <p>IH 510 Disk, 16'K 22" Blades, 10" Spacing (T7542)</p> <p>Krause 2442 Disc (T9079)</p> <p>Krause 2416 Disc (T5858)</p> <p>Sunflower 1232 Disk, 24' w/Trailing Hitch (T9730)</p> <p><b>USED PLANTERS &amp; DRILLS</b></p> <p>IH 5100 21x7 Drill, 7" Spacing, w/Fert (V9748)</p> <p>Great Plains 24' Conv Drill, w/4x12 Press Wheels (V9719)</p> <p>IH 510 Drill 16x7 (V9812)</p> <p>NI planter 11 Row Corn/Bean w/Liq., Fert, 2-100 Gal. Tanks, Demco Pump (V9608)</p> <p>JD 7000 Conservation Planter, 4 Row (V9752)</p> <p>JD 7000 Planter w/Dry Fert. Insecticide, NT Coulters (V8639)</p> <p>JD 750 NT Drill, 10', 7.5" Spacing, Press Wheels, Grass Seeder (V9350)</p> <p>Great Plains 14' Drill, No-Till, 7" Spacing w/Wt. Brackets, No-Till Hitch (V7978)</p> <p>GP 14' NT Drill w/CP Hitch (V8362)</p> <p>JD 7000 Conservation Planter 6 Row, w/Liq. Fert. (V9614)</p> <p>Great Plains 15' Drill, 26x7, 3 Pt. Solid Stand (V9436)</p> <p>JD 7240 Vacuum Planter, 11 Row, Frame MTD Coulters (V9303)</p> <p>Krause 5213NT Drill, 13', 7.5" Spacing, 953 acres, Press Wheels, Grass Seeder, Cyl &amp; Hoses (V9641)</p> <p>Haybuster 1206 Drill, 11.5', 6" Spacing, Press Wheels (V9409)</p>	<p><b>JUST TRADED / COMING IN:</b></p> <p>IH 856 Farmall Tractor (W9966)</p> <p>NH 273 Baler (U9967)</p> <p>IH 3588 2+2 Tractor (W9968)</p> <p>NH 488 Haybine (U9950)</p> <p>IH 186 Tractor (W9953)</p> <p>JD B Tractor (W9954)</p> <p>NH 479 Haybine (U9955)</p> <p>Farmall H Tractor (W9829)</p> <p>JD 8300 10" Drill (V9461)</p> <p>IH 5100 Drill Hitch, PA (V7859)</p> <p>Great Plains, 26x7 3 Pt. Drill, 4" Press Wheel- (V8486)</p> <p>Great Plains 30' Drill (V8224)</p> <p>IH 510 Drill (7116D)</p> <p>IH 800 30x6 Planter, Dry Fert., Markets, Monitor (V9601)</p> <p><b>USED CHISEL PLOWS &amp; PACKERS</b></p> <p>Brillion 25' X-Fold Packer, 20" Blades, Duals (T9894)</p> <p>Farmhand WP42 Cultipacker, 18', Roller Size - 18", 11Lx15 Duals, Notched Rollers (T9714)</p> <p>Landoll Coulter Chisel, 15 Shank Coulters, Hyd., Fold (T9558)</p> <p>Bush Hog 15 Shank Chisel Plow, 18.75', Spring Cushion Shanks, Cyl/Hoses (T9793)</p> <p>Krause 3113 Landsman, 13'9", Spacing: Front 8", Spring Cushioned Shanks, Blades: Front 18 1/4", Duals, 4 Row Tine Attach. (T9931)</p> <p>IH 55 chisel Plow (T9863)</p> <p>IH 14 Subsoiler, 9 Shank, Gauge Wheels (T8267)</p> <p>IH #11 Subsoiler, 7 Sk. Coulters, Gauge Wheel- (T9226)</p> <p>IH 2 Shank Ripper, 3 Pt. Ripper (T9607)</p> <p><b>USED PLOWS</b></p> <p>JD 2500 Auto-Reset Plow, 7-18" Bottoms, Coulters, On-Land Hitch (T6320)</p> <p>IH735 4 Bottom Plow, Vari-Width, 17.5" Coulters (T9800)</p> <p>IH 720 Plow 5-16", w/Coulters (T9527)</p> <p>IH 710 Plow 6-18", Auto Reset, Semi-Mounted (T6813)</p> <p>IH 720 5-18" w/Dtl. Hitch (U8769)</p>
--	---	---

**All New & Used Products  
Backed By  
Hooper Parts & Service**

**(717)768-8231**



**C.B. HOOBER & SON INC.**  
INTERCOURSE, PA



© 1995 CASE CORPORATION  
Case IH is a registered trademark of Case Corporation