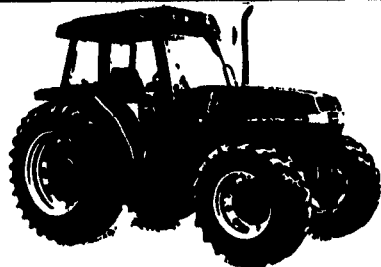


SETTING NEW STANDARDS OF EXCELLENCE



MAGNUM

7210 - 130 HP 7240 - 195 HP
7220 - 155 HP 7250 - 215 HP
7230 - 170 HP

MAXXUM

80 To 112 HP 2 or 4 Wheel Drive

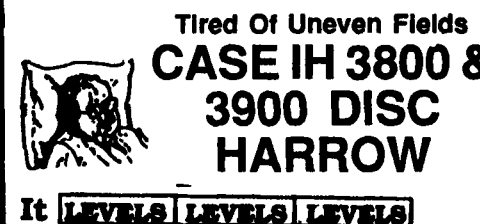


CASE IH 3230 52 HP - 4x4 - Shuttle Shift w/2255 Loader

Case IH 5300 Grain Drill
Featuring New Heavy-Duty
Disc Openers

The Best
Soybean &
Grain Drill
On The
Market

- 20x6 Double Disc Openers
- Press Wheel • Grain Drill Tines
- Acre Meter • Soybean Package
- Grain View Cups
- Grass Seed Attachment



Tired Of Uneven Fields CASE IH 3800 & 3900 DISC HARROW

It **LEVELS LEVELS LEVELS**

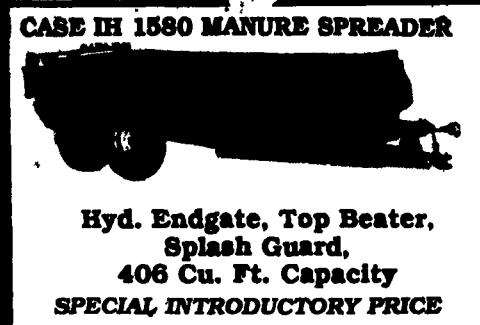


CASE IH 4200 COMBO MULCH FINISHER

Featuring:
Rock Flex Bearing Hangers
Earth Metal Blades
Big Trash Clearance

It combines your secondary tillage needs into a single pass that handles high residue fields and leaves residue on top to prevent erosion.

A NEW TOOL FOR CONSERVATION



CASE IH 1590 MANURE SPREADER

Hyd. Endgate, Top Beater,
Splash Guard,
406 Cu. Ft. Capacity
SPECIAL INTRODUCTORY PRICE



CASE SKID STEER

In Stock: 1825, 1838, 1840 & 1845

ATTENTION FARMERS: If Parts Are Needed After Hours to Keep You Going, Call Lynn At Home - 717-653-6106

MESSICK FARM EQUIPMENT, INC.

Rheems Exit-Rt. 283, Elizabethtown, PA. 17022
717-367-1319, 717-653-8867

1995 CASE CORPORATION
Case IH is a registered trademark of Case Corporation



Best Buys in Used Equipment

- TRACTORS**
- IH 574 Row Crop, 1467 Hrs, Own Owner, Ex. Cond.
 - IH 1098 w/Cab, Good Cond, 20.38 Rear Tires
 - Farmall H
 - Ford 8N
 - IH 574 w/2250 Loader, 1900 Hrs.
 - Ford 1820 w/Loader, 4WD
 - Power King 1516 w/60" Mower & Snow Blade
 - Ford 6600 - Good Cond!
 - Kubota L4200 G5TC w/Cab, 50 Hrs.
 - Cub Cadet 2182 w/Mower & Snow Blade
 - 12 HP Gravely w/Equipment
 - Kubota L185 w/L59 Woods Mower
 - Ford 1820 4WD, Hydrostatic
 - Kubota B-6000, 4WD w/RM 48" Mower
 - 420 Steiner 4WD w/60" Mower
- SKID LOADERS**
- NH L761 w/Bucket
 - Case 1835B Diesel w/Bucket
 - NH L553 Skid Steer w/Bucket
 - NH L555 Skid Loader
 - Case 1835B Gas w/Bucket
 - NH L451 Diesel Skid Loader w/Bucket
- PLANTING & TILLAGE**
- IH Model 510 18x7 Grain Drill, E. Con. J.
 - JD 820J Grain Drill w/Grass Seed Double Disc
 - IH 450 3 Bottom Auto Reset Plow
 - Brillion 12" Cutlifter
 - IH 475 Disc Harrow
 - Brillion Field Cultivator
 - Lilliston 9000 No-Till Drill, Excellent!
 - IH 56 2 Row Planter
 - Brillion 10" Packer

- HAY & FORAGE**
- NH 315 Baler w/Thrower
 - IH 445 Baler w/Thrower
 - NH 68 Baler w/Engine
 - NH 1499 SP Haybine 12' Cab & Diesel, 280 Hrs.
 - NH 415 Discbine, Good Cond.
 - NH 585 Baler w/72 Thrower, 1500 Bale
 - 2 - Hay Rack Wagons
 - Gravity Box w/Gear
 - NH 815 Forage Box Tandem Axle Gear
 - NH 492 Haybine, New Rolls
 - NH 900 Harvester
 - NH 484 Round Baler
 - Lazy Wheel Rake
 - NH 277 Baler w/Thrower
 - NH 40 Blower
 - NH 260 Hyd. Drive Rake, Ex. Cond.
 - NH 256 Rake, Good Cond.
 - JD Forage Box Wagon
 - Mayers 500 TSS Forage Box, Feeder Wagon
 - NH 1890 SP Forage Harvester w/3 Row N Corn Head
 - NH 718 Forage Harvester
 - NH 411 Discbine, 1000 RPM, Excellent
 - NH 892 Harvester, Metal Deck
 - NH 489 Haybine
 - NH 839 N6 - Auger Base & Corn Head To Fit 2100 & 2115 Harvester
 - NH 939 N4 Corn Head - 4 Row
 - NH 327 - 2 Row N Corn Picker
 - Hesston 8200 - Self-Propelled Haybine w/12' Head
 - NH 919 14 Ft. Direct Cut Header
 - NH 575 Baler w/72 Thrower - Like New!
 - NH 640 Round Baler Auto Wrap
- SPREADERS**
- NH 795 Spreader w/Hyd. Gate, Top Beater & Potation Tires, Ex. Cond.
 - NH 679 Spreaders
 - NH 781 Spreader, Top Beater/Tail Gate
 - NH 512 Spreader w/Top Beater
 - NH 327 Spreader w/Sturdy Pan
- MISC.**
- Woods Turf Mowing 12' Finishing Mower
 - NH 355 Grinder/Mixer - Like New!
 - NH L781-L 785 Cab Enclosure
 - 18.4-38 Axle Mounted Dually, 3/4 Axle
 - New Curtis Cab Enclosure For John Deere 70 Series
 - NH 358 Grinder/Mixer w/Scales
 - NH 40 Silage Blower
 - Papec 870 Grinder/Mixer
 - NH 353 Grinder/Mixer - Like New
 - Large Bale Grapple Hook

MESSICK FARM EQUIPMENT, INC.

Rheems Exit-Rt. 283, Elizabethtown, PA 17022
717-367-1319, 717-653-8867

1995 CASE CORPORATION



Messick Farm Equipment
Your New Holland
Headquarters



TOP CAPACITY

Before You Buy
LOOK
What's New
Check Us
Out!

NH TR87 & ~~TR87~~ COMBINES

- FEATURING:
- Big Capacity
 - Clean Grain
 - Less Grain Loss



NH 1915 -

- We stock and sell the most harvesting equipment and parts in the East!
- All backed by experienced, fully equipped service department with on-the-road service. From metal detectors to hyd-transmission to gearboxes etc. - We fix 'em right the first time!
- Hundreds of harvesters in the fields with high customer satisfaction



**WE KNOW
HARVESTERS
LIKE NOBODY
ELSE!**



Just Received
Brand New
1915 4x4
Best Deal
Now

Last One
Before New
Models

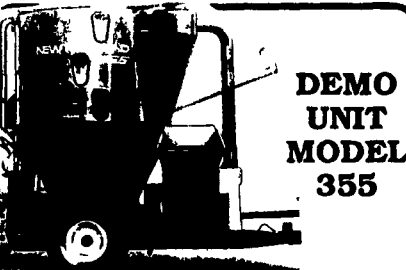
NH 630, 640, 650, ROUND BALERS



Make Tight Bales
For High Moisture
Hay and
Corn
Fodder
Fast!



Looking For A Spreader?
Now Is The Time To Buy!
NH 305,
306, 308
SPREADER



DEMO
UNIT
MODEL
355

GRINDER-MIXER
Hyd. Drive With Scale
SAVE BIG \$ \$ \$



FILL TALL
SILOS FAST!
NH 40 & 60
BLOWER
540 & 1000 PTO



NH 499 MOWER-COND.
12 FT. HYDROSUING
Fast, Clean Cutting
And Clog-Free
Conditioning.
See It Today!

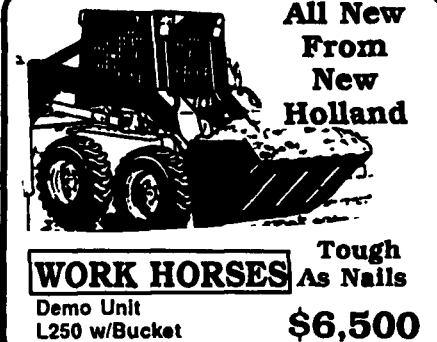


NH 157, 163 & 169

Tedder In Stock

Make Hay Fast!
Even When The Sun Doesn't Shine!
WINDROW INVERTER

NH
166



All New
From
New
Holland

WORK HORSES Tough
As Nails
Demo Unit
L250 w/Bucket \$6,500

MESSICK FARM EQUIPMENT, INC.



Rheems Exit - Rt. 283, Elizabethtown, PA
717-367-1319, 717-653-8867



Kubota

TRACTORS FOR EVERY NEED
12 HP to 91 HP

- Farmers
- Home Owners
- Landscapers
- Contractors

We Have A Kubota For You

MESSICK FARM EQUIPMENT, INC.

Rheems Exit - Rt. 283, Elizabethtown, PA

717-367-1319, 717-653-8867

