

Mack dump truck B67, runs good w/snowplow also Tonka tag-along, triaxle trailer, good condition, 20' bed, \$5,800 OBO for All. (215)654-9237.

New GMC 8' Truck Bed, Fits 1988-1995. \$675. (717)423-6719.

'92 Ford F150 Super Cab, 300 EFI, 5 spd., PS, PB, AM-FM, dual tanks, 6,250 GVW, 45,000 miles, red, excellent condition, \$11,500. 717-733-2873

WANT: Old asphalt, gas, fuel truck or tank w/pump & motor or pump & motor separate. 1(800)373-3703.

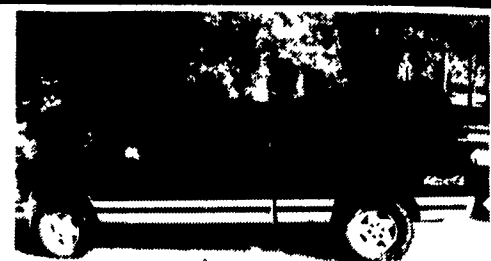
TRUCK Mack MS200, 1986, Maryland, inspected, \$6,000. 410-833-9091

Truck Engines: CAT 1893, Cummins 290, GM 8V71; Also truck parts. Make offer. (215)663-9221.

WANT: 18' steel dump body. Must be good! (215)663-9221.

# TRUCKS FOR SALE

- '93 Chevy Crew Cab w/Stahl Box
  - '86 Chevy 30 Van
  - '94 1500 Chevy Pick-up w/Extend Cab
  - '90 GMC 2500 Vandura
- 1-800-422-4587**



**1994 Chevy 4x4**  
Silverado, 1500, ext. cab, 350, at, ac, pw, tilt, cruise, GM protection plan, burgandy with matching cap on bed, 49,000 miles. A1 condition.  
**\$18,900.00**  
610-593-2897

## JONES GM CENTER

IS YOUR

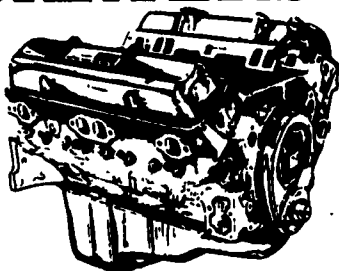
# Goodwrench ENGINE HEADQUARTERS

GM GOODWRENCH 350 V8 1973-85  
Part Number 10067353

New Engine - Not Rebuilt  
36 Month or 50,000 Mile  
Warranty

**\$1199<sup>00</sup>**

New Engine - No Core Fee



**HIGH PERFORMANCE ENGINES NOW IN STOCK**  
350-300 H.P. — **\$1695<sup>00</sup>** 350-345 H.P. — **\$2895<sup>00</sup>**

Call 394-0711 for prices on other New or Remanufactured Goodwrench Engines. 2.5 Liter thru 454 cid. Gas and Diesel

Chevrolet - Pontiac - Olds - Buick - Cadillac - GMC

## JONES GM PARTS CENTER

1335 Manheim Pike, Lancaster, PA 17604

Hours: Mon.-Fri. 7:30-5  
(717) 394-0711



Mr. Goodwrench



### COCKRELLS AUTO SALES

5270 East Trindle Rd.  
Mechanicsburg, PA  
717-766-4227

### TRUCK SPECIALS



**'86 FORD F-250 SUPER CAB 4x4 PICKUP**  
8600 GVW, 400 V-8  
5 Speed AC,  
6 Months/6,000  
Miles Warranty  
Extra Clean

**\$9,880**



**'90 CHEV SPORTS VAN**  
12 Passenger  
V-8 Auto  
6 Months/6,000  
Miles Warranty

**\$7,660**



**'94 FORD F150 SUPER CAB XLT 4x4,**  
V-8 Fully Loaded

**\$19,880**



**'92 CHEV SILVERADO PICKUP**  
V-8 Auto AC  
6 Months/6,000  
Miles Warranty

**\$11,680**



**'93 NISSAN EXT. CAB SE 4x4 PICKUP**  
V-6 5 Speed AC  
PW PL Cassette  
Only 30,000 Miles  
6 Months/6,000 Miles  
Warranty

**\$15,980**



**'89 FORD F250 XLT**  
8600 GVW 351 V 8  
Auto AC  
Fully Loaded  
50,000 Miles

**\$9,960**

OVER 100 CARS & TRUCKS IN STOCK

- '94 Ford Clubwagon XLT 15 Pass. Maxi-Van, 7.3 Diesel, Green, AT, AMFMCAS, AC, PW, PL, CC, 16,547 Mi. **\$21,900**
- '93 Pontiac Grand Prix LE, Gray, V-6, AT, AMFMCAS, AC, PW, PL, CC, 32,626 Mi. **\$11,600**
- '92 Jeep Wrangler 4x4 Hardtop, Green, 4 Cyl., 5 Spd., 84,180 Mi. **\$8,800**
- '92 Pontiac Grand Prix SE, Black, V-6, AT, AMFMCAS, AC, PW, PL, CC, 28,446 Mi. **\$11,800**
- '92 Chevy Lumina Z-34, Black, 3.4 V-6, 5 Spd., AMFMCAS, AC, PW, PL, CC, 37,788 Mi. **\$10,900**
- '91 Ford F Super Duty, Dual Wheels, Cab & Chassis, Blue, 460 V-8, AT, AMFMCAS, 11,661 Mi. **\$11,800**
- '89 Ford Aerostar Ext., Blue, V-6, 5 Spd., AMFMCAS, AC, 51,779 Mi. **\$6,900**
- '89 Ford F-150 XLT 4x4, Red/Gray, V-8 5 Spd., AMFMCAS, AC, PW, PL, CC, 92,946 Mi. **\$8,900**
- '89 Chevy S-10 P.U., Blue, 4 Cyl., 5 Spd., AMFMCAS, 76,940 Mi. **\$3,900**
- '88 Ford Clubwagon XL 8 Pass., Blue/Gray, V-8, AT, AMFMCAS, AC, CC, 88,590 Mi. **\$6,900**
- '88 Chevy S-10 P.U., Black, 4 Cyl., 5 Spd., 80,300 Mi. **\$3,600**

**Brubaker's Auto Sales**  
Myerstown, PA  
717-866-5237

LANCASTER'S LARGEST GM Truck Dealer & We're Getting Bigger!

**JONES** PONTIAC • HONDA GMC TRUCK  
1335 Manheim Pike, Lancaster  
Prices based on straight sale, Tax & Tags extra.  
Trades accepted at actual cash value.  
Must present this ad at time of purchase for sale price.  
**717-394-0711**

# JONES BEST BUY USED TRUCKS

<p><b>'88 FORD RANGER X-CAB</b> V6, XLT, 5 Spd., 59,000 miles #6187 Was \$8,995 <b>SALE \$6,250</b></p>	<p><b>'94 TOYOTA 4x4</b> 4 Cyl., 5 Spd., Clean #6161 Was \$15,400 <b>SALE \$13,550</b></p>	<p><b>'94 FORD AEROSTAR SPORT</b> V6, AT, AC, 7 Pass., 30,000 Miles #6224 Was \$14,995 <b>SALE \$13,300</b></p>	<p><b>'90 GMC SUBURBAN 4x4</b> AT, AC, V8, Silverado, 8 pass #6149 Was \$16,995 <b>SALE \$15,200</b></p>	<p><b>'93 GMC K20 4x4</b> AT, AC, SLE, 6.5 Turbo #6227 Was \$19,995 <b>SALE \$18,100</b></p>
<p><b>'92 CHEV SUBURBAN 3/4 4x4</b> 454, AT, AC, Silverado #6158 Was \$24,995 <b>SALE \$22,300</b></p>	<p><b>'93 CHEV K15 4x4</b> 5 Spd., 4.3 V6, 39000 Miles #6195 Was \$14,900 <b>SALE \$13,200</b></p>	<p><b>'92 FORD F150 4x4</b> XLT, AT, AC, V8 #6157 Was \$16,995 <b>SALE \$15,200</b></p>	<p><b>'92 GMC YUKON 4x4</b> AT, AC, V8, SLE #6172 Was \$22,900 <b>SALE \$19,380</b></p>	<p><b>'94 CHEV K30 4x4</b> 6.5 Turbo, AT, AC #6177 Was \$25,900 <b>SALE \$23,700</b></p>
<p><b>'91 FORD F150 XCAB 4x4</b> AT, AC, V8, XLT #6218 Was \$16,995 <b>SALE \$14,900</b></p>	<p><b>'94 CHEV K2500 4x4</b> AT, AC, V8, Silverado, 9000 Miles #6138 Was \$22,500 <b>SALE \$20,450</b></p>	<p><b>'87 FORD F150 4x4</b> XL, 5 Spd., AC, 300-6 #6210 Was \$8,995 <b>SALE \$6,900</b></p>	<p><b>'93 FORD F150 XCAB 4x4</b> AT, XLT, AC, V8 #6166 Was \$20,995 <b>SALE \$18,875</b></p>	<p><b>'93 CHEV K2500 4x4</b> 6.5 Turbo, AT, AC, Silverado, 8600 GVW #6198 Was \$21,995 <b>SALE \$19,980</b></p>
<p><b>'90 FORD F150 XCAB 4x4</b> XLT, 5 Spd., V8, AC #6226 Was \$11,995 <b>SALE \$9,375</b></p>	<p><b>'88 CHEV K BLAZER 4x4</b> V8, AT, AC, Silverado, 6,900 Miles #6199 Was \$11,900 <b>SALE \$9,850</b></p>	<p><b>'94 CHEV SUBURBAN 4x4</b> Silverado AT, AC, V8, 8 Pass. #6139 Was \$29,300 <b>SALE \$27,900</b></p>	<p><b>'95 GMC SUBURBAN 4x4</b> Geneva Conversion, AT, AC, V8, TV, VCR, &amp; More #12340 Was \$53,831 <b>SALE \$45,375</b></p>	<p><b>'88 FORD F150 4x4</b> V8, XLT, AC, AT #6223 Was \$11,900 <b>SALE \$9,475</b></p>