

# AG TRUCK BODIES



- \* Unique Automatic Gate Lock
- \* Tapered Design for Easy Unloading
- \* Ladders Inside and Out
- \* Tarp Rack

Truck Frame Alteration - Automatic Tarps - Hoists  
Financing Available - Truck Location Assistance

**CUSTOM BUILT - STRONG - DURABLE - CONVENIENT**  
Haul Silage, Feed Ingredients, Grain and More!

## LIQUID MANURE INSERTS

COMING SOON! CALL FOR DETAILS ON THIS INNOVATIVE NEW PACKAGE THAT WILL EASILY COVERT THESE ALREADY VERSATILE BODIES INTO LIQUID MANURE TANKS

Bruce MacRae

DeRuyter Welding & Machine Cortland Street, DeRuyter New York  
315-852-6123 or 315-852-6245 eve.

# USED TRUCKS



93 Chev 2500 Heavy Duty Ext Cab 4X4, Silverado, 454 FI, 5 Spd., PS, PB, AC, PW, PDL, Cruise, Tilt Wheel, AM & FM Stereo Cass, Rear Sliding Window, 31,000 Miles, Black with Gray Cloth

**\$19,800**



95 Chev. 3500 4x4, 454 FI, 5 spd, PS, PB, AC, Cruise, Tilt Wheel, Sliding Rear Window, AM & FM Stereo Cass, 10,000 Miles Local Vehicle

**\$21,400**

Financing Available

**MARTIN'S AUTO SALES**  
1025 W. Main St., New Holland, PA 17557  
(717) 656-6621

1987 Custom Fab stock trailer, 18' long, 7' high, 7' wide, inside measurements, bumper pull, 4' escape door on front on right side, full door and cattle chute in rear. 717-776-6549.

1987 Mack MS200 22' flatbed, good running condition, (717)243-5924 evenings.

1990 Super Duty F450 Hyd.-Dump, 8' Haul, Lariat, Gas, 460, 85,000 Miles, \$16,300. (410)374-6309.

1993 Eagle, 18', 10000 GVW, tandem axle, electric brakes, ramps, tool tray, wired for charging system, 2-5/16" ball, \$2500. 717-334-2475.

3150 gallon Better Bit augeromatic mounted on 1974 2010 International truck, twin screw, 549 V8 gas engine, 5+4 trans, good condition. 717-425-3491.

3 house trailer axles, \$35 each. S-10 pickup tool box, \$300. Call (717)335-3019.

'88 Chevy C30-ton truck, 12' stake body w/sides, heavy duty hoist. 717-993-2814.

'88 Ford F700 flat dump, \$1500; (2) tandem trailers, 40', 32', \$800/ea. 814-542-4450.

88 INT cab over, 14' stake body dump, 453 Detroit, 5sp, \$1500; 717/253-5329 or 253-6995. Wayne Co.;

'71 Mack single axle tractor. Good 237 5spd., \$2250. 610-932-5576.

'72 GMC Astro cabover, 318 Detroit, 13 speed, tandem axle, \$2500 OBO. 717-399-3096 leave message.

'73 Int. 4200 318 Detroit Power 13spd., wetline, good tires, inspected, comes with sister truck for parts, \$6500. 610-932-5576.

'81 Int. Loadstar DT466, 5+2 speed w/excellent 18' steel flatbed, twin cylinder dump, \$6,000 cash. Frederick, (301)253-2268.

'83 Ford 350, dual wheel ton truck w/5th wheel, excellent condition, \$3650. 717-292-3053 after 8PM.

'85 Chevy Suburban Silverado, 6.2LD, auto, 4WD, good strong truck. Many new parts, \$6750. (410)357-4703.

85 Ford Vacuum Truck, 3500 Gal. Tank, 104,000 Miles, 16F 40R, Air, PS (717)354-9111.

'89 Ford F250, 3/4 ton, 351 EFI, auto, PS, PB, AM-FM cassette, 8,600 GVW, dark blue, excellent condition, \$8,900. 717-733-2873

'90 Dodge LE 250, 3/4 ton, 318 EFI, auto, PS, PB, PW, PDL, cruise, tilt, air, AM-FM, 7,500 GVW, 2 tone brown, \$9,600. 717-733-2873

'91 Ford F150, 4x4, 300 EFI, 5 spd, PS, PB, AM-FM, dual tanks, 6,250 GVW, 19,000 original miles, excellent condition, \$11,995. 717-733-2873

'91 Ford XLT Lariat F250, super cab, 460 EFI, 5 spd, PS, PB, PW, PDL, cruise, tilt, air, AM-FM cassette, new radials, red & white, 47,000 miles, excellent condition, \$13,500. 717-733-2873

'92 Chevy Tahoe S10, ext. cab, V6, 5 spd, PS, PB, AM-FM cassette stereo, 29,000 one owner miles, red & silver, like new, \$8,975. 717-733-2873

Int. 478, 60,000 miles, air compressor, starter, alt, clutch, \$1,050. RT510 Fuller apart \$300. 5-spd Dana 6000 serves \$250. 2-step fuel tanks w/pumps \$75. 2-spd Eaton axle diesel ratio \$500. (2) Fleetstar cabs 10'yd dump body, damaged cab protector, \$500. (410)592-2467.



91 DODGE RAM 250 4x4 V8, AT/OD, Bed Liner, White/Maroon, 47,000 Mi \$11,500



88 GMC SIERRA SLX 4x4, AT, 350 V8, Tilt, Bed Liner, Blue/Silver, 119,000 MI \$7,900



88 CHEVY C3500 SILVERADO 350 V8, AT, AC, Tilt, Cruise, PW, PDL, Loaded, Bed Liner, Champagne, 127,000 MI \$6,800



91 VW GOLF GL 4 Dr., 5 Spd., AC, Cass, PS, PB, Red, 91,000 Mi. \$5,800



91 HONDA ACCORD EX 4 Dr. AT/OD, AC, PW, PDL, Tilt, Cruise, Sunroof, Loaded, Teal, One Owner, 92,000 Mi \$9,800.



92 PONTIAC GRAND PRIX LE 4 Dr. V6, AT/OD, PW, PDL, Tilt, Cruise, Cass, Loaded, Maroon, 86,000 Mi \$6,995

## PINE TREE MOTORS

Rt. 322 & Clearview Road, Clay Lancaster Co., PA 717-738-2242

# LEFEVER BROS. CHEVROLET CHEVY TRUCKS GEO

YOUR DIRECT LINE TO GENUINE GM PARTS

**(800) 533-3837**

When you call the number listed above, you'll reach our wholesale parts specialists, who can help you keep your GM repair work moving quickly.

Ask about:

- Specializing in GM Medium Duty Trucks, Current and Obsolete.
- \$500,000 Parts Inventory.
- Parts Locator for Those Hard to Find Items.
- We Ship Anywhere, Local Delivery Available.
- Experienced, Knowledgeable Personnel.

Mon., Tues., Thurs., Fri.

7:30 a.m.-4:30 p.m.

Weds. 7:30 a.m.-8:30 p.m.

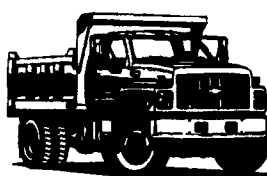
Major Credit Cards Accepted

**(717) 432-9697**

Quality Dealer Since 1921

406 U.S. Rt. 15, Dillsburg, PA 17019

**GM Goodwrench Service**



**Kodiak Chevy Trucks CAT DIESEL POWER**

## EBY USED EQUIPMENT

### BODIES

- (2) 10' Eby Cattle Bodies
- (2) 12' Eby Cattle Bodies
- (1) 15' Eby Cattle Body
- (1) 20' Eby Cattle Bodies
- (1) 22' Eby Cattle Body
- (1) 21' Steel Grain Body
- (1) 21' Eby Cattle Body
- (1) 24' Eby Cattle Body

### GOOSENECK

- 1994 Featherlight 4 Horse slant load
- 1987 Eby 20'x8' Cattle Trailer
- 1986 Barrett 22'x7'x7 1/2' Tall Double Deck
- 1984 Eagle 2 Horse 16'x6'x7'
- 1978 Featherlite 22'x8'

### M.H. Eby, Inc.

1194 Main Street (Route 23) Blue Ball, PA 17506 (717) 354-4971 (800) 292-4752 FAX (717) 355-2114

4435 State Route 29 West Jefferson, OH 43162 (614) 879-6901 (800) 752-0507 FAX: (614) 879-6904

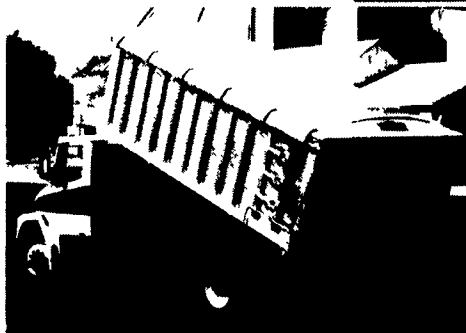
# Agriculture Moves on EBY Bodies

M.H. Eby custom-builds aluminum truck bodies for the agri-transportation market. Nobody offers more sizes and options in:

- **LIVESTOCK BODIES** - Lengths to 32', choice of heights and widths.
- **GRAIN BODIES** - Lengths to 24'; landscape and general purpose dumps to 12'.
- **FLATBED BODIES** - Lengths to 32', choice of 5 widths.

For greater payload capacity, Eby's aluminum design is equal in strength to steel and up to 40% lighter. Our corrosion-resistant components never need painting. That means minimum maintenance, improved appearance and higher resale value.

Eby products have superior standard features. And we offer custom options for virtually any application. Agriculture is your business- building bodies to haul it is ours.



Let EBY custom build one for you.



### M.H. EBY, INC.

1194 Main Street (Rt 23) • Blue Ball, PA 17506 • 800/292-4752 • 717/354-4971 • FAX 717/355-2114

4435 State Route 29 • West Jefferson, OH 43162 • 800/752-0507 • 614/879-6901 • FAX 614/879-6904