

NEW SPUTNIK

- w/12" Lid opening
- Large wheels
- Heavy duty construction
- 330 pound capacity
- Has passed U.S. Board of Health and PA. Dept. of Agriculture Inspection



The Conde Sputnik, including it's heavy duty undercarriage, is constructed entirely of quality 300 stainless steel. The Sputnik carries a one year guarantee against factory defects

Daniel Beiler 78 South Maple Avenue, Leola, PA 17540

6 DAIRY EQUIPMENT

USED TANKS

- 600 Gal. OH Mueller
- 2000 Gal. OH Mueller
- Also:
- 5 HP Frick Belt
- Hagerstown, MD
- 301-797-3921

Wanted: used stainless steel dairy tanks, steam heated kettles, after 5 or leave message. Kevin (215)322-3049.

Zero bulk tank, 400, 3hp Copeland compressor, good, make offer. 717-423-5733.

WANTED: Used milking parlors, transfer pumps, vacuum pumps, cooling compressors, (open or 3hp enclosed), Surge bucket milkers, (717)273-0076.

WANTED: Vacuum Pump, 3 or 5hp, 717/324-3075.

WANTED:

Good Used Milk Tanks - Any Size
No Ice Banks or Girton
1-800-448-4697

Serving Southeast PA and Northeast MD with quality milking equipment, 24-hour service and dairy supply routes.

Call Us For A Good Selection

Of Milking Equipment - Priced Right!

- (2) 5 HP Boumatic Vacuum Pump, Complete
- (7) Westfalia ACR/SS Detachers, Excellent Condition
- Westfalia 5 HP Vacuum Pump
- Salvager Heat Exchanger
- (2) 70 Gal. Oil-Fired Water Heaters, Like New
- 1500 Gal. Sunset Bulk Tank w/Compressor

We Ship Parts Daily UPS 24 HOUR SERVICE

ON THE FARM ROUTE SERVICE

Fisher & Thompson Inc.

DAIRY & MILKING EQUIPMENT SALES & SERVICE

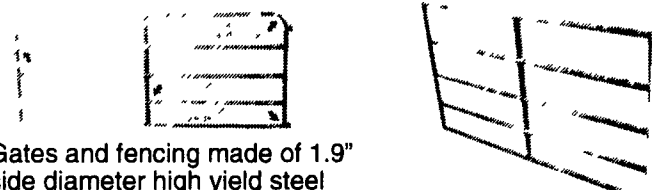
MAIN OFFICE
15 NEWPORT RD.
LEOLA, PA 17540
717-656-3307

MIFFLINBURG SALES CENTER
RD 2 BOX 265
WABASH RD.
MIFFLINBURG, PA 17844
717-966-3900
RICK THOMPSON

NORTHERN SERVICE CENTER
RD 1 BOX A-107
BELLEVILLE, PA 17004
717-667-6291
MERLE RESSLER



GATES & FENCING



All Gates and fencing made of 1.9" outside diameter high yield steel tubing with 13 Ga. wall. Custom built to fit your specifications and coated with Baked-on Thermoset Epoxy Powder Coating after Fabrication.

PLUS: Headlocks, hay bale feeders, bale movers, comfort stalls, water bowls, headgates and more

Sales & Service

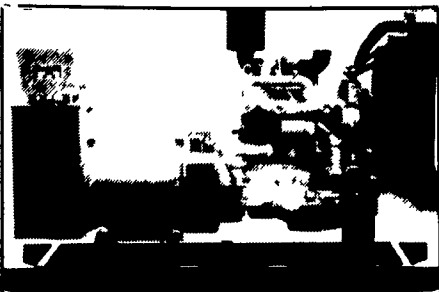
ROVENDALE AG & BARN EQUIP.

WATSONTOWN, PA 17777

717-538-9564 OR 717-742-4226
Exit 31, I-80 to I-180 Watstown Exit
Hours: Mon.-Fri. 8 to 5: Sat. 8 to 12



GENERATORS



AUTOMATIC and MANUAL SYSTEMS

DIESEL
L.P. GAS
NAT. GAS
NEW & USED



LEROY SOMER
PTO ALTERNATORS

BRUSHLESS
INDUSTRIAL GRADE
11 to 60 KW

READY FOR THE NEXT STORM?

For Sales and Service Call The People Who Know Generators

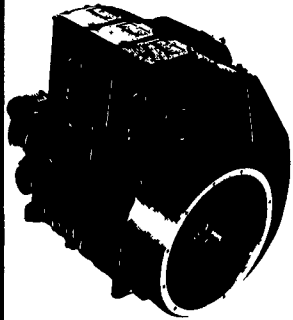
MARTIN ELECTRIC PLANTS

280 Pleasant Valley Rd., Ephrata, PA 17522-8620

Tel: 717-733-7968 Fax: 717-733-1981



The HEAVY DUTY Diesel



- Complete air cooled- Not Oil cooled
- Flywheel fan cooled- No Blower Belt
- Timing gears- No Timing Belt
- Can be hand cranked
- Compression release

A Proven Diesel Engine for Long Life

GIVE US A TRY - CHECK OUR PRICES
DIESEL OUR SPECIALTY

Distributor for
Lister/Petter and Lombardini Diesel Engines
6-8 12-V Regulated
CHARGE- MASTER Battery Charger

HOOVER DIESEL SERVICE

255 Mascot Rd., Ronks, PA 17572
(717) 656-3322 (717) 295-1729

Today's Diesel at Yesterday's Prices? THAT'S RIGHT!



Special Pricing on Selected 912 Models
THESE ARE NEW ENGINES

F3L912 - 34 HP @ 1500 RPM
42 HP @ 1800 RPM **\$3,800**

F4L912 & F6L912 Models Also Available

Call Us For All Your Diesel Needs
Diesel is Our Specialty - Not A Sideline!

RUFUS BRUBAKER
REFRIGERATION & POWER

76 Pumping Station Rd.
Quarryville, PA 17566

717-786-1617



Milk IS the real thing!

A 1st Class Team Together For 25 Years!



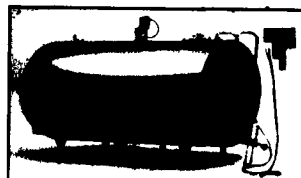
RUFUS BRUBAKER REFRIGERATION

And...



Scroll-Compressor Technology

New in 1994



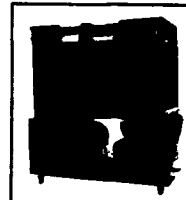
You may pay less for some dairy farm equipment... but it can cost you more!

Equipment cost is not the only cost of cooling milk

In the long run, total operating costs of a Mueller' milk-cooling system are generally substantially less than those of "bargain-brand" milk-cooling equipment.

Example	Mueller	Competition
Cost of equipment	\$41,000	\$28,000
Cost of electricity @ .08 kW for 12,000 lbs milk/day for 10 years	\$17,550	\$22,850
Total operating cost for ten years	\$58,550	\$50,850
Savings	\$ 7,700	

Contact your Mueller distributor for further comparisons.



6 MONTHS FREE FINANCING

For Qualified Buyer See Us Today For Details!

Southern Service Center
76 Pumping Station Rd.
Quarryville, Pa.
717-786-1617
Vic Leininger

MAIN OFFICE

1048 North Penryn Rd.
Manheim, Pa. 17545

717-665-3525
Ken or Ed Brubaker

Northern Service Center
541 Frystown Rd.
Myerstown, Pa.
717-933-4711
Ken Kopp

★ Call Today For All Your New or Used Milk Tank And Refrigeration Equipment Needs!