

3 ACRE COUNTRY PROPERTY
Farmersville Area
PUBLIC AUCTION
Sat., Nov. 18, 1995
3:00 p.m.

Directions: From Ephrata take Route 322 East through Hinkietown turn right on Farmersville Road at Martin's Bike Shop follow Farmersville Road to Fairmont Road turn right to property on left. Earl Township, Lancaster Co., PA.



148 Fairmont Road
LARGE 2 STORY HOME: with approx. 1600 sq. ft. of living area containing large modern eat-in kitchen with oak raised panel doors, formal dining room, large living room, foyer, 1/2 bath, laundry room, UPSTAIRS has 3 large bedrooms including master bedroom with walk-in closet, modern bathroom, attic storage. Full basement partially finished, cold storage, central vacuum, water softener, oil heat, built-in humidifier.

- SPECIAL FEATURES**
- Control Air Conditioning
 - 3 Acre Lot
 - 2 Storage Sheds
 - Large Deck
 - 200 AMP Service
 - 2 Car Garage
 - Well Water
 - Anderson Windows

See this country home at:
OPEN HOUSE:
Saturday, October 28 • 1:00 PM to 3:00 PM
Saturday, November 4 • 1:00 PM to 3:00 PM
or by appointment. For appointment or assistance to obtain financing, call Aaron E. Martin, Auct. at (717) 733-3511.
TERMS: 10% down payment day of auction, balance at final settlement on or before March 15, 1996.
NOTE: Zoned rural, potential for another building lot, shop, etc. Contact Earl Twp. concerning your needs. Land now being farmed.
Attorney: Doug Good

AUCTION BY:
DAVID L. & SUSAN M. HOOVER
Professional (717) 355-0587
AUCTIONEERING
MARTIN AUCTION SERVICE
410 West Church Rd.
Ephrata, PA 17522
(717) 733-3511

PIGS

GRADED SALE
TUES., OCT. 17
7:00 P.M.
at
WESTMINSTER
LIVESTOCK AUCTION
Westminster, Md.
Phone
(410) 848-9820

Public Auction Register

Closing Date Monday 5:00 P.M.
of each week's publication

SAT. NOV. 11 - 9AM 2 tractors, 3 trucks, large amt. of small farm tools, farm equip, guns & household goods. 2HG crawlers. Turn off Rt. 183 S. of Bermsville onto Bernville-Robeson Rd. for 1/2 mi. past Ski Resort and right onto Christmas Village Rd. for 2 1/2 mi. and left onto Station Rd. for 2/10 mi. to auction. Berks Co., Pa. For the late Paul Foose, Ken Leiby, auct.

SAT. NOV. 11 - 9AM Real Estate, Household Goods, Antiques, Car & Riding Mower. Located Approx. 12 Mi. East of Lancaster, Take Rt. 30 to Rt. 41 on 41 go 1/2 mi. East of Lancaster, Take Rt. 741 (Opposite Gap Town Clock) - On 741, Cross Railroad Bridge to Stop Sign - Turn Left on Mine Rd. - 1/2 Mi. to Sale, Watch for Sale Signs. Salisbury Twp., Pequea Valley School District, Lanc. Co., PA. Terms by: John "Jack" M. McClure Est. Robert E. & Jeffrey R. Martin Aucts.

SAT. NOV. 11 - 9AM Farm Machinery, personal property for Melvin M. & Jane S. Nolt, 422 East of Myersstown turn right Millersville Rd. to Riley Rd. Turn left to farm on left. Kline, Kreider & Good Aucts.

SAT. NOV. 11 - 9AM Real Estate 12NOON Personal Property. Perry County,

Between Millerstown and Ickesburg Along Rt. 117 West. Carl Yoder Estate. Russell M. Wright and Frank Swartz Aucts.

SAT. NOV. 11 - 9:30AM Antiques, HH goods, tractors, guns, furniture. From Rt. 272 at Ephrata take Schoeneck Rd. north to Schoeneck, stay left at the Y in Schoeneck continue on Cocalico Rd. approx. 4 miles to 50 S. Cocalico Rd., Denver, Pa. By Emma R. Fittery. Aaron Martin, auct.

SAT. NOV. 11 - 10AM Inventory reduction auction for T.L. James Enterprises, Inc. Rt. 46 Belvidere, NJ. Farm tractors & skidsteer loaders, construction equip & trucks, farm & landscape equip, implements. Route 46, Belvidere, NJ. Petrowsky, aucts.

SAT. NOV. 11 - 11AM Real Estate. Rapho Township, (Rt. 72 - Near PA Turnpike Exit 20) Located at 65 Lehman Rd., Rapho Township, Lanc. Co., PA (Directions: Rt. 72 - Just North of PA Turnpike Exit #20. Turn West onto Lehman Rd. Left

to Property). Terms by: Duaine D. Hauck & Doris M. Hauck T. Glenn Horst Aucts.

SAT. NOV. 11 - 1PM 2 Acre Wooded Lot w/Mobile Home Located Along Hamertown & Edwards Rds., Caermarvon Twp., Lanc. Co. Inspection: Sat. Oct. 21 1-3PM. Terms by: Jerald & Elizabeth Martin. Horning Farm Agency.

TUES. NOV. 14 - Fed Cattle Sales. Carlisle Livestock Market, Inc. Exit 12 off I-81 turn S. then left onto Alexander Spring Rd. 249-4511.

WED. NOV. 15 & THURS. NOV. 16 - Large Two Day Sale of Farm Equipment, Etc. Located 6 Miles South of Chambersburg, Pa. One Mile East of Marion along Rt. 914, 1/2 East Off Rte. 81, Exit 4. Owners, Jerrold & Gloria Oaks. Marion Auction Service.

WED. NOV. 15 - 7:30PM Feeder Cattle Sale, Hagerstown, MD Four States Livestock Sales.

THURS. NOV. 16 - 9AM Farm Machinery, tools, Suburban 4x4, 313 W. Meadow Valley Rd., Lititz. Paul C. & Ruth Bucher, Kline, Kreider & Good Aucts.

THURS. NOV. 16 - 2PM Real Estate. Located Adjacent to Monroe Valley Golf Course North on Rt. 72 From Exit 30 of I-81 to Right into Monroe Valley. Watch for Signs. Fernwood Auction Co.

FRI. NOV. 17 - 11AM Dansville, New York. C&R Farms (Charles and Robin Potter), Herd dispersal of Milking herd, bred heifers, and breeding size heifers, 180 head sell. Pirrung Aucts.

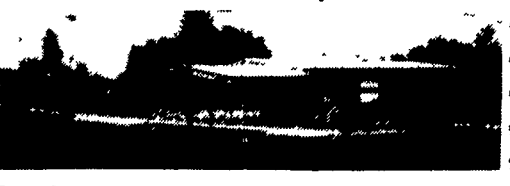
FRI. NOV. 17-7 PM Horse Sale. New Holland Sales Stables, Inc. 101 W. Fulton St., New Holland, Pa.

Public Auction

William B. Fry's Pontiac, Inc.
Since 1928
Valuable Real Estate,
Automobiles, Equipment,
Tools, Parts & Supplies,
Antique Signs and Older
Model Vehicle Parts.

Tues., October 24, 1995
9:00 A.M.

Located at 529 E. Main Street, Lititz Borough, Lancaster County, Pennsylvania.
Real Estate to be offered at 10:00 A.M.
Consists of various parcels.



Parcel #1 226'x445' - 3.8 Acres consists of a large lot of ground known and numbered 529 E. Main Street, thereon erected a brick constructed auto repair garage and show room. Containing 6,450 sq. feet service repair shop, 1,360 sq. feet office, rest rooms, parts and service area, "Glass Front Showroom" is 1,920 sq. feet with good view from street. Nice blacktop frontage on E. Main St. and N.-Oak St. Building is structured with basement facility for four vehicles, roof trusses are steel, high doors to service area. Area is zoned general business.

Parcel #2 50'x200' is a parcel of land known and numbered 525 E. Main St., Lititz Borough, Lanc. County, Pennsylvania. Thereon erected a 1 1/2 story Permastone residence with 3 bedrooms, bath, living room, dining room and kitchen, oil fired hot water heat system. Area zoned general business.

Parcel #3 1.6 Acre is a corner lot of ground with no improvements. Formerly served as a used auto lot. Zoned industrial. Super access from Oak St. Excellent exposure on Main St.

Parcel #4 is a tract of land located on the west side of South Cedar St., Lititz Borough, Lancaster County, Pennsylvania. Between Marion and Lemon Streets. Together with a one story masonry constructed garage along Raspberry Lane. More recently used as auto body repair, with paint booth, this is a nice parcel of open space.

The locations could serve for a variety of uses. Please take a look at the various parcels. Will be open for inspection October 4th 1:00 P.M. till 4:00 P.M. and October 11th 2:00 P.M. till 5:00 P.M.

Automobiles - 1991 Pont. Bonneville - 1990 Chev. Lumini - 1988 Pont. Fiero - Courier Pick-Up.

Equipment & Tools - 3 large air compressors, 12' step ladder, shop vac, Lube system, B&D valve resurfer, 225 amp Lincoln welder, solar 550 6-12 charger, Coates tire changer, Nortron balancer, S&R deployment harness, Hotsy steam Jennie, tap and die sets, trans. axle tool set, SP-200 Lincoln welder, various Kent Moore service specialty tools & equipment, Kent Moore quad 4 DOHC special service tools, transmission jacks, GM computer test center, Sun Engine performance tester, Universal breakout box, arbor press, drum lathe with automatic feed, MDL 3000 AMMCO, floor jacks, tube pumps, drill press, Kent Moore air conditioner Service units, Sure-Start charger, Acetylene units, torque angle tester, bench grinder, shop foreman's desk, chain hoist, work bench & vise, floor jack stands.

Signs - Oakland Pontiac, General Motors, Neon Silver Streak, Neon Pontiac sign and various other signs of interest from the past.

Parts - Large assortment of parts for older model autos and later models. GM & other large variety manuals also variety used bumpers, hoods, and doors (stored indoors), transmissions, large assortment new and used exhaust pipes, new belts, hoses, filters, rims, tires, brake shoes and parts, scrap metal and old engines.

Office Items - desks, chairs, file cabinets, micro fiche, computers, show room furniture, glass in oak show cases, 4 drawer file cabinets, 2 ice cream freezers. Lance snack set, trophies, various pictures. Also numerous items of value not listed.

Auction by order of:
Richard A. Umbenhauer Esq.
Receiver: **William B. Fry's**
Pontiac Inc.

E.M. Murry Associates
LICENSE NO. 649-L
(717) 626-8175 or (717) 626-2836
FAX (717) 627-6767
23 North Water Street
Lititz, Pennsylvania 17543
APPRAISERS and ADVISORS

COMPLETE AUCTIONEERING SERVICE

PUBLIC AUCTION
Mon., October 16, 1995
6:00 p.m.

• Real Estate •
Home/Commercial Building - 10.58 Acres

Directions: From Harrisburg travel north on Route 11 & 15, just north of Liverpool turn left onto Route 104 and continue approximately 4 miles. Just past covered bridge turn right at auction sign and continue 1/4 mile. Auction on left. Perry Township, Snyder County. Just 2 miles south of Mt. Pleasant Mills.

REAL ESTATE
The home consists of 3 bedrooms, 1 3/4 baths, living room, dining room, kitchen, full basement with 1 car garage and 3/4 bath, deck off of dining room with sliding door. Also on the property is a 40x80x16 ft. fully insulated garage with oil hot air heat and separate sewer facilities and well. Complete with office and parts room. This real estate is very versatile with possible subdivision possibilities.

Call Auctioneers for showing
Owners: **David and Kathy Varner**

KENNETH E. HASSINGER
McClure, PA 17841
(717) 658-3536
AU-001532-L

NEIL A. COURTNEY
Richfield, PA 17086
(717) 539-8791
AU-002651-L

COMPLETE AUCTIONEERING SERVICE

PUBLIC AUCTION
Wednesday, October 18, 1995
11:00 a.m.

• More Than A Touch Of Lancaster •
A very picturesque productive 68+/- acre farm,
99% tillable, located in Lewis Township,
Northumberland County near McEwensville, PA.

Directions: From I-80 exit toward McEwensville, in town take Route 44 South, auction on the right. Lots located just off Route 44 South on Rovenolt Road. From Lewisburg take Route 405 through Milton to Susquehanna Trail, continue to Route 44, proceed south, auction on the right. Signs posted.

REAL ESTATE
68+/- acre farm in high state of cultivation situated on the property is a 2 1/2 story 5 bedroom home with large kitchen, sun room and parlor, hardwood floors, full basement, large front porch. The main barn is a bank barn 64x64 with 26 stalls for cows and 10x12 milk house with 400 gallon bulk tank, 40'x36' horse barn, 24x54 calf barn, farm market 26'x40', 432 sq. ft. 2nd residence. Large irrigation tank and strong well. Currently in produce, tobacco, alfalfa and corn.

This is a must see property. It's just right to produce a good farm income or for the person who wants a show place.
Terms: 10 % down, balance in 45 days.
Call auctioneers for showing.

Owner: Ben Stoltzfus

KENNETH E. HASSINGER
RR 02, Box 985
McClure, PA 17841
(717) 658-3536
AU-001532-L



NEIL A. COURTNEY
R.D. #1 Box 239
Richfield, PA 17086
(717) 539-8791
AU-002651-L

PUBLIC SALE
SAT., OCT. 21, 1995
8:30 A.M.

4600 STRICKER STREET
HARRISBURG, PA 17111

Take Derry Street Exit off of I-83, Go East on Derry Street, turn North on 46th Street Watch for Sale signs

ANTIQUES,
COLLECTIBLES, TOYS,
FURNITURE & COINS

LIVINGSTON PLAYER PIANO, COMPLETELY REBUILT, WITH ROLLS, CABINET & STOOL. OAK ROLL TOP DESK & 5 DRAWER FILING CABINET. PIANO & DESK ARE EXPERTLY REFINISHED.

ANTIQUES: Painted curved glass china closet, wash stand, Sellers kitchen cabinet, Mission oak sectional book case, trunks, chests, 3 pc. wicker living room suite, wall telephone, mirrors, Waterbury shelf clock, Blue and green granite ware, Tin toys include: waterpump, airplane carnival ride, Roseville & few other antique dishes, cheese boxes, old kitchen tools.

LOT OF OLD ADVERTISING TINS
COINS: MINT & PROOF SETS
FROM 1959 TO 1990

COLLECTIBLES: Winross trucks, 2000 Advertising pencils, Extensive collection of Matchbooks started in 1936 to include: Political, Baseball, Colleges, National Parks, 100's small advertising trinkets, Life Magazines, Old Playskool toys, Cabbage patch dolls, Doll furniture, Riding toys, Avon & other items.
MODERN FURNITURE: Five piece bedroom suite w/Fruitwood finish, Sofa, occasional tables, 4 Hitchcock chairs and others. Hand tools and hardware.
Order of Sale: 8:30-Tools 9:00-Coins & Household Goods 10:00-Advertising, Toys & Antique items 10:30-Winross Trucks, 1:00 P.M.-Piano & Furniture

Don't miss this sale, every thing extremely good, clean condition.
TERMS: CASH, NO OUT OF STATE CHECKS, BIDDER I.D. REQUIRED.

SELLING FOR
BETTY RAUDENBUSH

DON HARNSBERGER - AU387L & VAN G. HOCKER - AU417L AUCTIONEERS,
PHONE: (717) 671-9959

FOOD STAND RESERVED
SALE UNDER COVER
CAN BE SEEN SALE DAY ONLY
TWO AUCTIONEERS
SELLING AT SAME TIME