

Mark Yeik, Auct.

**Public Auction Register**

Closing Date Monday 5:00 P.M. of each week's publication

WED. OCT. 25 - 2PM Antiques, household goods & tools. At the Horst Auction Center at the corner of Rt. 322 & Durlach Rd., Ephrata, Lanc. Co., Pa. For Mr. & Mrs. Robert Herr. Horst Aucts.

WED. OCT. 25 - 5:30PM 2 trailer loads of nice office supplies, furniture, chairs, desks, swivel chairs, filing cabinets. 211 E. Main St., Lititz. For M.B. Glick, Mel Hoover, auct.

THURS. OCT. 26 - 10AM Holstein Dairy Herd Dispersal, Farm Machinery. Location: From Myerstown at intersection of Rt. 422 & Rt. 501 Take Rt. 501 South Approx. 4 Mi. to Reistville, Turn Left Onto Reistville Rd. Approx. 3/4 Mi. to Heidelberg Brethren Church. Turn Right into

Farm Lane at the Church. Farm Situated Behind Church in Farm Lane. Heidelberg Twp., Lebanon Co. Terms by: Allen H. & Joyce Leinbach. Kline, Kreider, & Good Aucts.

THURS. OCT. 26 - 12 Noon, real estate auction, 1223 Market St., Hbg., Pa.

THURS. OCT. 26 - 7PM Public sale of mountain ground. Mark Glick. auct.

FRI. OCT. 27 - Muddy Run Farm Holstein Herd Dispersal, 46 head hi grade holsteins At farm along Rt. 340 in Lanc. Co., Pa. 9 mile E. of Lancaster City 1st farm west of village of Inter-course. John & Emma Fisher, owners. Steve, Steve Jr. Petersheim, aucts.

FRI. OCT. 27 & SAT. OCT. 28 - 12th Annual Support for Prison Ministries. Auction and Chicken Barbecue at Rutts Auction in Far-

mersville, PA. (Lanc. Co.) Local Aucts.

FRI. OCT. 27 & SAT. OCT. 28 - 2 Day Annual Western Maryland Fall Contractor's Auction. Cochran Auction Complex, Boonsboro, MD J.G. Cochran Aucts. & Assoc.

FRI. OCT. 27- 12 Noon H.B. Contracting & K.W. Construction auction of

surplus contractors equip. Held at the Stevens Fire Co. Grounds, Stevens, Lanc. Co., Pa. Nelson L. Ebersole, auct.

FRI. OCT. 27 - 12:00NOON BEI-LAN Registered Holstein Dairy Herd & Bred Heifer Dispersal. Located RR5, Box 51, Millflinburg, PA. Owners: Elam W. & Nancy Beiler. Bryan D. Imes Auct.

**AUCTION REAL ESTATE SAT. OCT. 21, 1995 @ 11:00 A.M.**

85 DEEP RUN RD., MYERSTOWN, PA Ranch style home situated on 1 acre in beautiful rural Lebanon county. Home has 3 BR, 2 baths, cathedral ceilings & working fireplace. Large patio & deck with view, macadam drive & central air. TERMS: \$7000 day of sale. Balance at settlement on or before 30 days. OPEN: 1 hr. prior to auction or by appt.

DIRECTIONS: From Myerstown, N. on 645 to Stracks Dam Rd. to Rt. on Deep Run Run.

Auctioneer: Jim McClellan AU2831L 717-933-8264 or 800-617-3850



AY43L

**WANTED CONSIGNMENTS**

**WED., NOV. 8, 1995**

**Leola, PA SPECIAL AUCTION**

**3 Auctioneers Selling All Day**

**Christmas Trees - Nursery Stock**

**- Truck Lots, Tools, Hardware -**

**Snow Equipment, Farm**

**Equipment, Excess Equipment**

**Inventory, Lawn & Garden**

**Monthly Sales Start in Jan. 96**

**Only 10% Commission On Tagged Items**

**Call Day or Eves. (610) 358-0725**

**IMPORTANT AUCTION**

of

**OUTSTANDING ANTIQUES & COLLECTIBLES**

from the home of the late

**S. BROOKS LUCAS & NANCY S. LUCAS**

of Shepherdstown, West Virginia

**FRIDAY, OCTOBER 20, 1995**

3:00 P.M.

**SATURDAY, OCTOBER 21, 1995**

9:00 A.M.

**COCHRAN AUCTION COMPLEX**

**BOONSBORO • MARYLAND**

**Friday Session**

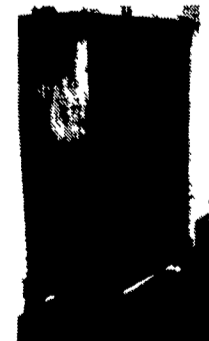
Collectibles, Tools and General Household including 1950's Coca Cola Vending Machine; Lots of Marbles; Baseball Items including Signed Baseballs, Cards, etc.; Toys; Picture Frames (Lots of Walnut Victorian); Iron Watering Trough; Art Pottery; Books including Antique Reference Books; Lots of Indian Stones; Biscuit Box; Glass and China; Furniture in the Rough, etc.

**Saturday Session**

This session includes many Shepherdstown and local items of importance, over 200 historical prints, period American furniture including a Winchester, VA Walnut Chippendale High Chest w/Stop-fluted quarter columns; Shearer Dropleaf Table; Early Walnut Gateleg Table; Several Chippendale Chairs including (1) Armchair and (1) Virginia Side Chair; American Federal Inlaid Tea Caddy; Bokara Rug; Walnut Chippendale Corner Cupboard; Cherry Glass-Door Corner Cupboard, w/broken arch top; (2 Pairs) of Banquet Tables; Mahogany Hepplewhite and Baltimore Sheraton; Hepplewhite Chest, w/crotchgrained drawer fronts; Sheraton Figured Maple Semi-High Chest; Maple Shaving Mirror; Lots of Old Chairs including Windsors and Plank Seats; Store Counter in Original Red Paint from the Hodges' Store in Shepherdstown; Walnut and Pine Stands; Walnut Queen Anne Tavern Table; Mahogany Sheraton Breakfast Table; (2) walnut Hepplewhite Dropleaf Tables; Rare Inlaid 2-Drawer Blanket Chest (probably Virginia, circa 1800); Walnut Step-Back Open-Top Cupboard; Several Mirrors (Chippendale and Sheraton); Signed Shepherdstown Copper Tea Kettle; Sheetz Rifle; Harpers Ferry Flintlock Rifle; Colt Pistol; Pair of Sabres; Several Local Maps and (2) Plat Books of Shepherdstown; Local Tin Items; Brass Chambersticks and Candlesticks; German Steins; Lots of Glass and China; Stoneware (blue Decorated) and Redware; Miniature Baskets; Silver including Coin and Sterling; Empire Dressing Table; A Shepherdstown Sampler; Maple Chippendale Desk; Chippendale 2-Drawer Blanket Chest; AND A LOT OF ITEMS YET TO BE DISCOVERED.

PREVIEW INFORMATION: Thursday, Oct. 19th from 6:00 P.M. to 9:00 P.M.

Friday, Oct. 20th from 12:00 Noon to 3:00 P.M.



**AUCTION CO. NOTE:** This is an auction sale from an early Shepherdstown family full of important local items and fine antiques. In addition, several family pieces are from the Severna Park home of Dave and Paula Lucas. Plan now to attend this outstanding 2-day auction.

Located approximately 70 miles west of the Baltimore/Washington Metro Area, the auction will be held at the 26 acre COCHRAN AUCTION COMPLEX conveniently located just 4 miles south of Exit 35 off Interstate 70 on Maryland Route 66 at Boonsboro, Maryland.

Terms include Cash or Approved Check with positive identification required for registration. Not responsible for accidents. Food and Facilities available on site.

**POSITIVELY NO BUYERS PREMIUM!**



**AUCTIONEERS & ASSOCIATES LTD.**

Professional Auctioneers & Appraisers Since 1972  
7704 Mapleville Rd., P.O. Box 222, Boonsboro, MD 21713-0222  
PA Lic. # (AS000832-L)  
(301) 739-0538 Toll Free (MD) 1-800-310-2844 Fax (301) 432-2844

**PUBLIC AUCTION**  
**Thurs. Eve., Oct. 19, 1995**  
**4:00 p.m.**

Location: 1/2 mile north of Pillow, PA, turn right off Route 225, 1/4 to sale site.

**ANTIQUES - COLLECTIBLES - HOUSEHOLD**

Farm Table, 1 Drawer, Turned Legs; Depression Era China Closets; Governor Winthrop Style China Cabinet; Solid Cherry Chair, Needs Reupholstered; Sectional Sofa, Nice; Chrome Breakfast Set; Amana Radar Range; G.E. 2 Dr. Ref. Freezer, Copper; Luggage; Pictures & Frames; Alum. Chaise Lounge; Wooden Base Cabinet, Formica Top; Guardian Service; Flatware; Metal 4 Shelf Racks; Fishing Rods; Stevens Model 35 22 Bolt Action w/Clip; White Alum. Storm Windows; Misc. Carpet; Tablecloths, Sheets; G.E. Fry Pan; Floor Lamp; Etc.

**A.C. 5040 Diesel Tractor, W.F.E., 3 Pt., 1 Owner, 386 Hrs., Super Nice.**

**Tractor and Equipment Sell at 6:00 p.m.**

Following 3 Pt. Equipment, Some Like New: Fesa Spinner Fertilizer Spreader - 6' Blade - 5' Bush Hog - Pittsburgh 2 Bot. Plow - Pittsburgh 7' Disc - Post Hole Digger 12" Auger; 4 Wheel Wagon Old Car Running Gear; Wards 5 Hp. Front Tine Roto Tiller; Power Craft 10" Radial Arm Saw; 12' Alum. Ext. Ladder; 7/8" Skil Saw; Partial Socket Set; 1/4" Elec. Drill; Traps; Etc.

Terms: Cash or PA Check Lunch

Owner: **Mary P. Costello**

**MARK J. JONES, AUCTIONEER**  
Phone (717) 286-0052 • Lic. #AU 1595-L  
Jeff Dunkelberger • Lic. #AU 3043-L

**PUBLIC AUCTION**

**JOSEPH KINGSTON ESTATE**

**2ND DAY SALE**

**SAT., OCT. 21, 1995**

**9:00 AM**

**REAL ESTATE - CONSTRUCTION & FARM EQUIPMENT - MACHINE SHOP TOOLS - VEHICLES - GUNS**

Located: 7 miles east of Lewistown, PA off Rt. 322 at the Burnhan & Yeagertown exit going west, come off ramp to stop sign, turn right, go 1000' to stop sign & turn left, keep straight for 7 4/10 mile, turn left in macadam road - Going east on 322 go off ramp & turn left & follow previous directions OR 8 mile east of Lewistown on Rt. 522 at Alfarata, turn west, go to stop sign & turn left to 1st road on right. Watch for Signs!

**12:00 NOON REAL ESTATE 12:00 NOON**  
**PARCEL A:** 111.36 Acres of mountain land w/a 2 room cabin w/electric only. (Percolation passes for a on-lot sewage disposal system). 1 Acre reservoir, timber wasn't harvested for 20 years, deeded right of way ingress and egress to property.

**PARCEL B:** 141 Acres with 3 ponds (4 acres, 2 acres & 1/2 acre). 3000' Road frontage, building sets private in macadam lane w/2-1/2" story log and frame house with 8 rooms, 2 baths, & Florida room, 1 car garage, 2100' private PA Lic. Landing strip w/hanger, large block & metal garages & workshop, approx. 90 acres tillable & some wooded.

TERMS: Cash, Certified, or Cashier's Check, Deposit of \$20,000 Per Parcel Day Of Auction, Balance in 60 days.

SHOW BY APPOINTMENT PHONE 717-543-5483 OR 717-242-1649

**MACHINE SHOP EQUIPMENT & TOOLS CONSTRUCTION & FARM EQUIPMENT 1:00 PM VEHICLES & RECREATION EQUIPMENT 1:00 PM**

**11:30 AM GUNS & PISTOLS 11:30 AM**

**THIS IS ONLY A PARTIAL LIST - FOR COMPLETE LIST SEND S.A.S.E. TO AUCTIONEER**

SELLER: **ESTATE OF JOSEPH W. KINGSTON**  
Executor: Linda L. Grumbine  
Attorney: Francis Searer

**AUCTION CONDUCTED BY:**  
**Rentzel's Auction Service**  
Emigsville, Pa  
717-764-6412  
PA Lic. #761

