



OCTOBER 16-22, 1995

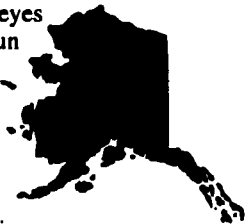
ALASKA DAY, OCTOBER 18.

FIRE AND ICE

With its smoking volcanoes and icy glaciers, our 49th state is the largest in size. We purchased Alaska from Russia for \$7.2 million and increased the area of the U.S. by 20 percent. Its Malaspina glacier complex is bigger than Rhode Island. Mt. McKinley is the highest peak in North America and the Yukon River is one of the longest navigable rivers in the entire world. Even Alaska's animals are big — the killer whales and humpbacks, the walrus, moose, and caribou, the bears and wolves. To protect their eyes from the glare of Alaska's sun and snow, Eskimos wear wooden "sunglasses" with very narrow slits.

Seeing is believing.

— Latin proverb.



TIP OF THE WEEK

To prevent eyeglasses from steaming in cold weather, rub both sides of each lens with soapy fingers, then polish.

COUNTRY ONION PIE

- 3 pounds onions
- 3 tablespoons butter
- 1 pint half & half
- 3 eggs, beaten
- two pastry crusts

Peel and slice the onions. Fry in butter (or bacon fat) until golden. Lightly beat together cream and eggs and add to onions. Pour into pie crust and cover with top crust. Cut slits in top crust and bake at 350° F for 1 hour. (Fried, chopped bacon can be added to the filling if desired.)

Makes 8 servings.



The OLD FARMER'S WEATHER PROVERBS



No rain on St. Gallus Day (Oct. 16) A dry spring will come.

October breezy, November wheezy, December freezy.

Expect rain when bears are restless.

Special Offer. Handy chart full of interesting weather proverbs. Send \$3 to Weather Chart, Dept. UF, The Old Farmer's Almanac, Box 520, Dublin, NH 03444.

Eighty-Four Livestock

Eighty-Four, Pa.

Monday, October 9, 1995

Report Supplied by Auction

CATTLE: 418.

STEBERS CHOICE 1120-1320 LBS. 56.00-62.00; SELECT 50.00-55.50; STANDARD 49.00 DOWN.

HOLSTEINS: CHOICE 48.50; SELECT 43.00-47.50; STANDARD 39.50 AND DOWN.

HEIFERS: SELECT 49.00-55.00; STANDARD 48.00 AND DOWN.

COWS: BREAKING UTILITY AND COMMERCIAL 32.00-37.00; CUTTER AND BONING UTILITY 27.50-33.00; CANNER AND LOW CUTTER 23.00-27.00; SHELLS DOWN TO 21.00.

BULLS: YG#1 1200-1680 LBS. 40.00-47.50, #2 1120-1920 LBS. 35.00-39.50.

FEEDER CATTLE: 200-300 LBS. 45.00-67.00, 300-500 LBS. 41.00-67.50, 500-800 LBS. 39.00-57.00; HEIFERS 200-300 LBS. 40.00-57.50, 300-500 LBS. 35.00-56.00, 500-800 LBS. 35.00-57.00; BULLS 200-300 LBS. 42.50-67.50, 300-500 LBS. 40.00-60.00, 500-800 LBS. 38.00-53.00.

CALVES: 109. CHOICE 75.00-80.00; GOOD 50.00-72.50; STANDARD AND GOOD 40.00-49.00; UTILITY 35.00 AND DOWN.

FARM CALVES: HOLSTEIN BULLS #1 90-125 LBS. 80.00-100.00; #2 HOLSTEIN BULLS 80-105 LBS. 50.00-75.00; HOLSTEIN HEIFERS #1 90-115 LBS. 105.00-125.00; HOLSTEIN HEIFERS #2

75-100 LBS. 75.00-102.50; BEEF X BULLS AND HEIFERS 75-120 LBS. 40.00-85.00.

HOGS: 146 HEAD. US#1&3 200-240 39.00-46.00, US#2-3 240-260 LBS. 45.50-46.50; US#1-3 260-300 LBS. 43.75-44.75.

SOWS: UNDER 500 LBS. 35.00-38.50; OVER 500 LBS. 36.00-41.50.

BOARS: 300-700 LBS. 29.75-43.00. FEEDER PIGS: US#1-3 40 LBS. 18.00-22.00; #1-3 89 LBS. 36.00.

SHEEP: 233 HEAD. HIGH CHOICE AND PRIME 40-80 LBS. 71.00-77.00; 80-120 LBS. 72.00-94.00; CHOICE 80-120 LBS. 60.00-73.00; FEEDER LAMBS 65.00-72.00; SLAUGHTER SHEEP 20.00-36.00.

GOATS: 12 HEAD. LARGE 35.00-67.85; MEDIUM 18.00-48.00; SMALL 2 HEAD 19.00.

Morrison Cove Livestock

Martinsburg, Pa.

October 9, 1995

Report supplied by auction

CATTLE 215. STEERS CHOICE 61.00-65.00; GOOD 58.00-60.50.

HEIFERS: CHOICE 60.00-65.00; GOOD 57.00-60.00.

COWS: UTILITY & COMMERCIAL 32.50-40.00; CANNER & LOW CUTTER 28.00-35.00.

BULLOCKS: 45.00-52.00. BULLS: YIELD GRADE NO. 1 40.00-48.00.

FEEDER CATTLE: STEERS 55.00-60.00; BULLS 45.00-55.00; HEIFERS 45.00-55.00.

CALVES 144. PRIME AND CHOICE, NO MKT. TEST; GOOD 50.00-60.00; STANDARD 25.00-35.00; HOLSTEIN BULLS 90-130 LBS. 60.00-100.00; HOLSTEIN HEIFERS 90-130 LBS. 140.00-170.00.

HOGS: 403. US NO. 1-2 47.50-48.50; US NO. 1-3 45.00-47.00.

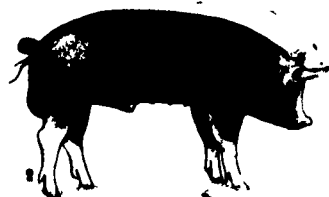
SOWS: US NO. 1-3 23.00-39.00.

BOARS: 28.00-33.00. FEEDER PIGS: 14 HEAD. US#1&3 20-50 LBS. 12.00-20.00.

SHEEP: 11 HEAD. CHOICE, GOOD, AND SLAUGHTER EWES, NO MKT. TEST.

GOATS: 30.00-65.00.

22 LOADS OF HAY. ALFALFA 90.00-120.00; MIXED HAY: 60.00-85.00; 1 LOAD OF STRAW AT 62.00; CORN FODDER 9.00 BALE; SAWDUST 51.00; 3 LOADS OF BAR CORN AT 80.00-93.00.



C.B. HOOBER & SON, INC.
Intercourse, PA
(717) 768-8231



HOOBER EQUIPMENT, INC.
Middletown, DE
(302) 378-9555

TWO LOCATIONS

The Saving Place

STALK ROLL PARTS PACKAGE ...

FOR CASE IH 800/900/1000 SERIES CORN HEADS

Longer service life is now yours because of an improved lower bearing. A single, sealed, heavy duty water pump type bearing now replaces the two needle bearings and seal. Greasing is no longer required!

NEW STYLE



OLD STYLE



Case IH bearings have a full 3/4" shaft with flat and pilot holes for positive mounting and removal.

Don't be fooled by light duty look-alikes that will appear in the aftermarket!

BENEFITS

- Longer bearing life
- Reduced maintenance time
- No greasing required



PARABOLIC SHANK

4x4 or 4x6 Main Frame

09580046



WE SHIP PARTS DAILY

Via FED. EXP. - UPS - PPSH - BUS - AIR FREIGHT, ECT.

HOURS

Mon.-Fri. 7 AM-5PM; Sat.: 7 AM-Noon



Authorized UPS Station

CALL US...
It Could Be We Have It

YOU STAY PUT

Pick Up Your Phone And Place Your Parts Order



WANTED

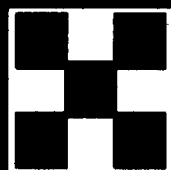
Finishing Contracts

- 2000 Head Facilities
- 60 Miles From:
Lancaster, PA
Harrisburg, PA
Knoxville, PA
Wyalusing, PA
or Hagerstown, MD

- P.I.C. Feeder Pigs

Sow Contracts

- 300 Sows and Up



PURINA MILLS
800-873-5300