

**Aberdeen Sales Company, Inc.**  
Complete Auction & Appraisal Service  
Churchville, Md.

Report Supplied by Auction  
Wednesday, October 11, 1995

SLAUGHTER STEERS: MARKET 1.50 LOWER. CHOICE 2-4 1100-1400 LBS. 62.00-64.50; SELECT & LOW CHOICE 1000-1500 LBS. 55.00-61.00; HOL. STEERS HI CHOICE & PRIME 1250-1400 LBS. 56.00-58.00; CHOICE 1200-1500 LBS. 54.00-56.00; SELECT, ALL WEIGHTS 48.00-51.00.  
SLAUGHTER HEIFERS: MARKET 1.00 LOWER. CHOICE & PRIME 950-1300 LBS. 61.50-63.00; SELECT ALL WEIGHTS 900-1400 LBS. 55.00-61.00.  
COWS: MARKET 2.00 HIGHER. STEADY. BRK. UT. & COMM. 2-4 BULK 36.00-39.00; HI DRESSING 39.00-43.00; CUTTER & BON. UT. 34.00-36.00; HI DRESSING 36.00-37.50; CANNER & CUTTERS 30.00-33.00; LOW DRESSING 23.00-30.00.  
BULLS: MARKET 3.00 HIGHER. ALL WEIGHTS 1100-1900 LBS. 39.00-54.00.  
VEAL CALVES: MARKET STEADY. CHOICE AND PRIME 200-400 LBS. 74.00-86.00; HI GOOD AND LOW

CHOICE ALL WEIGHTS 49.00-61.00.  
FARM CALVES: MARKET STEADY. HOL. BULLS 100-125 LBS. 92.00-115.00; HOL. BULLS 85-95 LBS. 65.00-105.00; HOL. HEIFER CALVES 100-120 LBS. 165.00-197.00; SMALL FRAME 70-105 LBS. 73.00-145.00; SLAUGHTER CALVES ALL WEIGHTS 15.00-40.00.  
FEEDER CATTLE: MARKET STEADY. BULLS & STEERS 400-900 LBS. 49.00-64.00; HEIFERS 300-700 LBS. 43.00-57.00.  
LAMBS: MARKET STEADY. CHOICE & PRIME 90-110 LBS. 77.00-88.00; LIGHTER LAMBS 68.00-105.00; EWES - HEAVY 27.00-36.00, LIGHT 34.00-47.00.  
GOATS: MARKET STEADY. SMALL 25.00-35.00; MEDIUM 40.00-55.00; LARGE 75.00-110.00.  
HOGS: MARKET 3.00 LOWER. 210-250 LBS. 42.00-45.00; 255-300 LBS. 38.00-45.00; SOWS - HEAVY 33.00-37.00; SOWS - LIGHT 25.00-32.00; BOARS ALL WEIGHTS 26.00-31.00.

TER STEERS, NO HIGH CHOICE AND PRIME OFFERED. CHOICE 1100-1600 LBS. 58.00-63.50; SELECT 52.00-57.75; SELECT AND CHOICE 900-1075 LBS. 51.25-60.00; HOLSTEIN CHOICE 1050-1800 LBS. 52.00-56.75, SELECT 50.00-52.75, STANDARD 40.00-49.00; SLAUGHTER HEIFERS SELECT AND CHOICE 57.00-62.50, HOLSTEINS TO 60.00.  
SLAUGHTER COWS: BREAKING UTILITY AND COMMERCIAL 36.00-37.50; CUTTER AND BONING UTILITY 32.25-35.75; CANNER AND LOW CUTTER 27.25-32.00; BIG MIDDLE 33.75-35.75; SHELLY 27.00 DOWN.  
BULLS: 39.50-45.00.  
FEEDER CATTLE: FEEDER STEERS 200-650 LBS. HOLSTEIN/DAIRY TYPES 34.00-63.00; FEEDER HEIFERS 200-375 LBS. 52.50-85.00, 400-850 LBS. 41.00-51.50, 400-850 LBS. HOLSTEIN/DAIRY TYPES 35.00-98.00; FEEDER BULLS 400-850 LBS. HOLSTEIN/DAIRY TYPES 35.00-59.50.  
CALVES: VEALERS CHOICE 75.00-85.00, STANDARD AND GOOD 40-125 LBS. 30.00-70.00; CALVES RETURNING TO FARM, STRONG DEMAND! HOLSTEIN BULLS #1 95-125 LBS. 107.50-124.00, #2 90-135 LBS. 70.00-105.00; HOLSTEIN HEIFERS #1 75-130 LBS. 130.00-190.00; BEEF X BULLS 75-90 LBS. 65.00-90.00.  
SWINE: HOGS US#1-3 220-270 LBS. 47.00-47.50; US#2-4 220-270 LBS. 42.75-45.00. 180-210 LBS. 40.50-43.00;

SOWS US#1-3 300-600 LBS. 34.75-41.50, THIN/WEAK/ROUGH 33.25 AND DOWN; BOARS 400-700 LBS. 27.25-30.25; FEEDER PIGS BY THE HEAD, 15-35 LBS. 21.00-30.00.  
GOATS: BY THE HEAD, MEDIUM/LARGE 54.00-83.00, FLESHY KIDS 36.00-52.00, SMALL 15.00-35.00.  
LAMBS: CHOICE 45-85 LBS. 85.00-96.00, GOOD 76.00-84.00, GOOD AND CHOICE 90-130 LBS. 65.50-82.50.  
SHEEP: ALL WEIGHTS, 24.50-50.00. SALE EVERY TUES. 5:55 P.M. FOR PRODUCE, RABBITS, POULTRY, AND EGGS; 7 P.M. FOR LIVESTOCK.  
NEXT STATE GRADED FEEDER PIG SALE FRIDAY, OCT. 13 AND 27.  
NEXT SPECIAL FEEDER CATTLE SALE TUES., OCT. 17 AND 31 (PEN LOTS OF CATTLE WILL BE SOLD IN ORDER RECEIVED.)  
NEXT SPECIAL MONTHLY FED CATTLE SALE TUES., NOV. 14 (PEN LOTS OF CATTLE WILL BE SOLD IN ORDER RECEIVED). EARLYBIRD PENS CLOSE EVERY TUES. AT 2 P.M.

HEIFERS: 300-500 LBS. 38.00-46.00; 500-700 LBS. 40.00-51.00; 700-800 LBS. 38.00-48.00.  
BULLS: 200-400 LBS. 48.00-60.00, 2 AT 74.00 AND 79.00; 400-600 LBS. 45.00-51.00; FEW 900-1050 LBS. 37.00-44.00.  
DAIRY REPLACEMENTS: LARGE SPRINGERS TO 950.00; MEDIUM TO 760.00; SMALL TO 500.00; 1 REG. HOLSTEIN BULL AT 675.00.  
LAMBS: HIGH CHOICE 90-120 LBS. 77.00-78.00; 60-80 LBS. 77.00-89.00; 35-50 LBS. 78.00-91.00; 3 YEARLING EWES 66.00-71.00.  
GOATS: MEDIUM 45.00-60.00; SMALL 16.00-38.00.  
PIGS AND SHOATS: BY THE HEAD, 8 HEAD 60 LBS. AT 36.00.  
NEXT WED., OCT. 18: SPECIAL FEEDER SALE AT 7:45 P.M. PROMISED: 18 ANGUS STEERS AND HEIFERS, 500 LBS., WORMED AND SHOTS; 12 ANGUS AND BW FACE STOCK COWS, SOME WITH CALVES, SOME SPRINGING.  
NEXT FRIDAY, OCT. 20: SPECIAL DAIRY SALE, 7:15 P.M.

**Carlisle Livestock Market**  
Carlisle, Pa.  
Tuesday, October 10, 1995  
Report Supplied by Auction  
SLAUGHTER CATTLE: SLAUGH-

**Four States Livestock**

Hagerstown, Md.  
October 11, 1995

Report supplied by Auction  
SLAUGHTER COWS: 110 HEAD, 1.50 HIGHER! UTILITY 33.00-36.75; HIGH DRESSING 37.00-40.75, 1 AT 42.25; CANNERS 30.00-34.00; SHELLY 30.00 DOWN.  
BULLS: YG#1 40.00-44.00; 1 DRY FED AT 46.00; YG#2 37.50-40.00.  
FED STEERS: HIGH CHOICE AND PRIME 1200-1450 LBS. 63.00-65.00; CHOICE 60.00-61.50; LOW CHOICE 55.00-59.00; CHOICE HOLSTEINS 1150 LBS. TO 55.00.  
FED HEIFERS: HIGH CHOICE 1300 LBS. TO 64.50; AVG. CHOICE 58.00-60.00.  
VEAL CALVES: 158 HEAD. CHOICE, NONE; CULLS 85-110 LBS. 30.00-37.00; 50-80 LBS. 26.00-32.00.  
FARM CALVES: HOLSTEIN BULLS #1 95-120 LBS. 80.00-102.00; FEW 90 LBS. 70.00-78.00; #2 80-100 LBS. 40.00-65.00; HOLSTEIN HEIFERS #1 95-120 LBS. 160.00-185.00; 80-90 LBS. TO 142.00; BEEF X BULLS AND HEIFERS TO 65.00, 1 AT 112.00.  
BUTCHER HOGS: NONE.  
SOWS: NONE.  
BOARS: NONE.  
STOCK CATTLE: 146 HEAD. STEERS MEDIUM AND LARGE FRAME 200-400 LBS. FEW TO 60.00; 400-600 LBS. 52.00-60.00; 600-800 LBS. NO TOPS OFFERED.

**New Holland Dairy**

New Holland Sales Stables  
Wednesday, October 11, 1995  
Report supplied by auction  
DAIRY COWS 88; HEIFERS 71; 2 BULLS. MARKET STEADY.  
LOCAL FRESH COWS 650.00-1175.00.  
LOCAL BETTER FRESH COWS 1250.00-1475.00.  
LOCAL SPRINGERS 550.00-1175.00.  
FRESH HEIFERS 900.00-1175.00.  
PUREBRED FRESH HEIFERS 1375.00-1585.00.  
UPSTATE LOADS FRESH 635.00-1160.00, BETTER FRESH 1300.00-1400.00.  
UPSTATE LOADS, SPRINGERS 750.00-1135.00.  
LARGE SPRINGING HEIFERS 950.00-1110.00, SMALL 610.00-850.00.  
SHORT BRED HEIFERS 610.00-850.00.  
REGISTERED HEIFERS 725.00-1225.00.  
OPEN BREEDING AGE HEIFERS 560.00-660.00.  
SMALL OPEN HEIFERS 410.00-500.00, SMALLER 315.00-335.00.  
GRADE BULLS 410.00-515.00, PURE-BREDS 775.00-850.00.

**HAY, STRAW & GRAIN SALE**

Every Thursday at 1 p.m.  
Auction will continue all year long

**Vintage Sales Stables, Inc.**

(Rt. 30, 10 miles east of Lancaster in Paradise, PA)

For info. L. Robert Frame, Sr. president  
(717) 442-4181 business  
(215) 458-8518 home

**Vintage Sales Stables Inc.**

3 Tractors and trailers to haul cattle if you're going South, let us know a little ahead.

(610) 458-8518 home  
(610) 458-5060 home  
(717) 442-4181 office  
days or nights



Pennsylvania Agricultural Commodities Marketing Association, Inc.

A privately held full service commodity merchandising firm

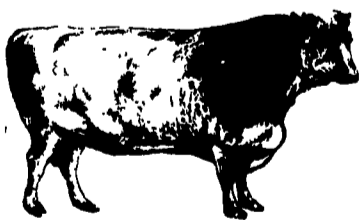
475 East High Street, Palmyra, Pa. 17078  
Started by Producers for Producers  
Call today to see how PACMA can broaden your marketing efforts whether you're BUYING or SELLING

**We can lock-in your prices for Hogs!**

**HOG FORWARD CONTRACTS**

Also - Grain Forward Contracts Available

**CALL TODAY - 717-838-7050 or 1-800-PACMA INC.**



**BUCKS FOR BEEF.**

**Introducing our new LIVESTOCK FINANCING PROGRAM**

featuring loans for

- feeder steers
- dairy cows

**Dauphin Deposit Bank**  
Agri-business Unit

EQUAL OPPORTUNITY LENDER

**(717) 355-8270**

Member FDIC

**SPECIAL FALL FEEDER CATTLE SALES**

Thursday - October 19, 1995 - 7:30 p.m.  
Steers & Heifers - 300 to 1000 Lbs.

Thursday - November 2, 1995 - 7:30 p.m.  
Steers only - 300 to 1000 Lbs.

FOR INFORMATION CONTACT:

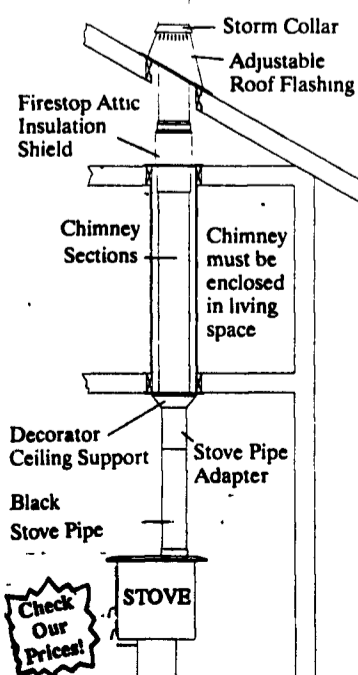
Eddie Stevens, Mgr., Roanoke-Hollins Stockyard  
540-992-1112

Eddie Nicely, Pres., Roanoke Feeder Cattle Assoc.  
540-862-4539



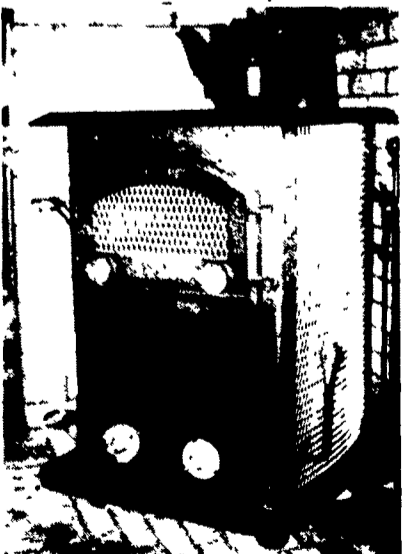
**FULL LINE STAINLESS STEEL CHIMNEYS**

Deluxe Rain Cap



Mfg's Distributor  
**D.S. MACHINE SHOP**  
Dealer Inquiries Invited

**CUSTOM BUILT COAL STOVES**  
Tested to UL ANSI/UL1482



- LARGE GLASS DOORS
- ENERGY EFFICIENT

**D.S. MACHINE SHOP**

238B Old Leacock Rd.,  
Gordonville, PA 17529  
**717-768-3853**