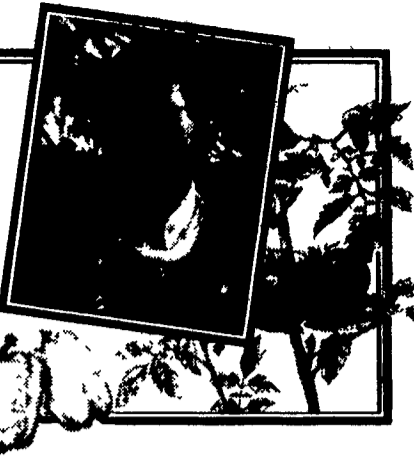


**All Gardens  
Great & Small**  
by  
York Co.  
Horticultural Agent  
**Tom Becker**



growth provides the best show induced by pinching between your thumb and forefinger. Besides being hardy and requiring little care, other than pinching, they come in many flower forms like a daisy eye, halo-type or pom-pom, and in many colors like coral-red, white, yellow, rust, pink and lavender. When plants grown in the garden reach a height of 6 to 8 inches (early summer) remove 3/4 inch of each shoot. This will cause side branching. When these side branches become 4 to 5 inches long, again remove the top 3/4 inch. This will make the plant compact.

varieties make nice pot plants for inside or on porches, terraces and decks. You can use short or cushion mums effectively in mass plantings or borders.

However, you may have more attractive flowers if you replace them with new plants after two or three years.

The simplest way to obtain new plants is to divide old clumps. Do this in the early spring before the shoots begin rapid growth. Dig clumps and break off the shoots, leaving a mass of roots on each shoot.

You may want to add a little fertilizer, maybe even a little water and winter protection, but that's about all the care the hardy chrysanthemum needs.

Mums can live for several years in one location in warm climates without having to be moved.

Leaf disease will be less troublesome if the foliage is kept dry this time of year especially during the night. So water plants early in the morning to allow ample time for them to dry before nightfall.

**Fall Garden Mums**  
Fall gardens would not be complete without chrysanthemum x morifolium, the garden mum. Many varieties and colors of this plant are available in varying size containers. Nurseries and garden centers feature garden mums in late summer and fall and to a less-

er extent in spring. Varieties range from "button" types with flowers less than an inch across to the "Cloud 9" variety with white and yellow flowers over 4-inches across.

Mums are one of the best sun-loving perennials plants for early fall bloom. Bushier and compact

Vigorous varieties may need a third pinching. Most compact, cushion type mums may be pinched as late as mid-July.

This versatile plant has many uses around the home. The taller varieties are excellent for cut flowers, while medium and short

## Holiday Programs

FLEMINGTON, N.J.—On November 9, we will offer Holiday Feast or Famine-Healthy Strategies for Holiday Dining, taught by Kathleen Klotzbach.

On November 16, Rutgers Extension will offer Sleigh Bells Ring! Don't Let Stress Spoil Your Holiday. Ann Rhinesmith, extension home economist of Warren County, will provide tips and

strategies to not let stress be the uninvited guest during this holiday season. Both programs will be held at the Extension Center, Route 31, Flemington, 7-9 p.m. There is a fee of \$5 for both programs or \$3 for one. Pre-registration is required, the deadline is November 3. For further information and registration, call (908) 788-1342.

### ALL PURPOSE CART



Photo is 15 Cu. Ft. Size

- 15 Cu. Ft. Model—sembled with removable front & back, 26" pneumatic tires. **\$162.<sup>00</sup>**
- 8 Cu. Ft. Model—sembled with solid front & removable back, 20" pneumatic tires. **\$132.<sup>00</sup>**

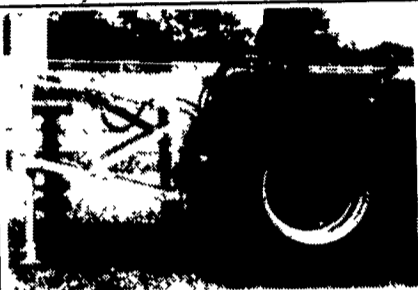
**Elam M. Ebersol**

558 Gibbons Road  
Bird-In-Hand, PA 17505

Leave Message

**717-661-9131**

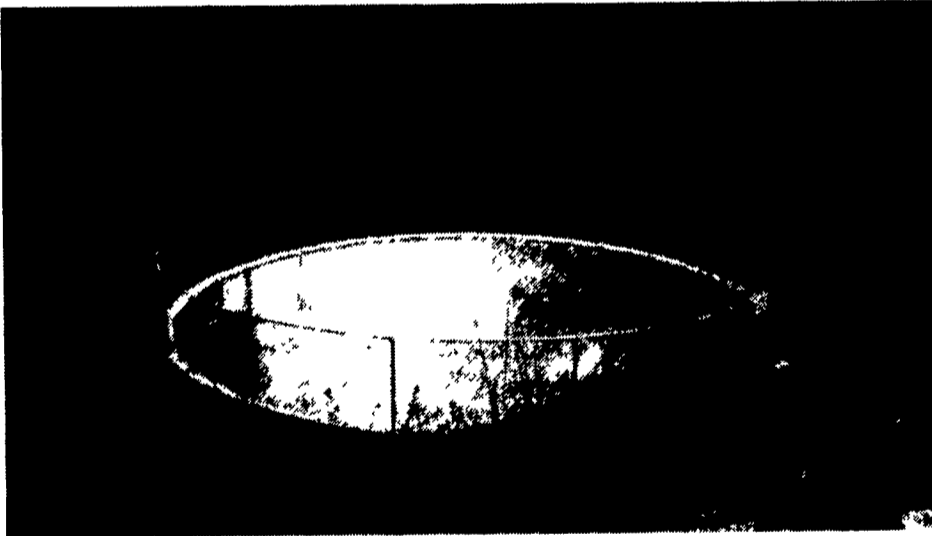
Dealer Inquiries Welcome



### DRILL HOLES FAST WHERE DIGGERS FAIL BELLTEC TRACTOR MOUNTED DRILLING MACHINE

- UP TO 4500# DOWN PRESSURE
  - SHAFT DRIVE WITH TORQUE LIMITER
  - FRAME GUIDED AUGER SYSTEM
  - FITS MOST TRACTORS FROM 28 TO 200 H.P.
  - BORING HEADS AND AUGERS AVAILABLE FOR HARD, DRY, STONY SOILS, CONCRETE AND SOLID ROCK
- BELLTEC INDUSTRIES**  
P.O. Box 270 • Belton, Texas 76513  
1-800-242-9410

### • Agricultural • Commercial • Residential



Partial In-Ground Tank Featuring Commercial Chain Link Fence (5' High - SCS approved)

- Retaining Walls • Bunker Silos
- Manure Storage, Etc.

LET OUR EXPERIENCE WORK FOR YOU-ESTABLISHED SINCE 1979!

Sizes And  
Layouts  
To Your  
Specifications

We Work  
Hard For  
Customer  
Satisfaction!

GROFFDALE CONCRETE  
**WALLS**  
INC.

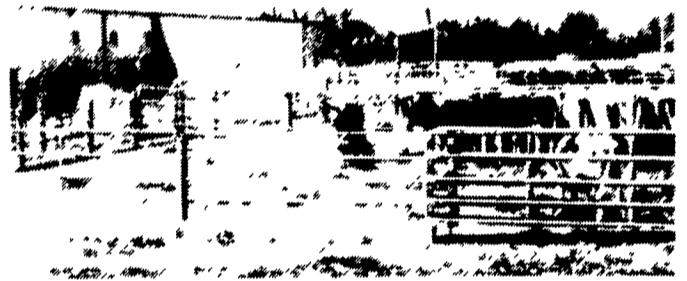
430 Concrete Ave., Leola, PA  
717-656-2016

Authorized  
Dealer For  
KEYSTONE  
CONCRETE  
PRODUCTS

- H-Bunks
- J-Bunks
- Trench  
Silo Walls
- Hog &  
Cattle Slat

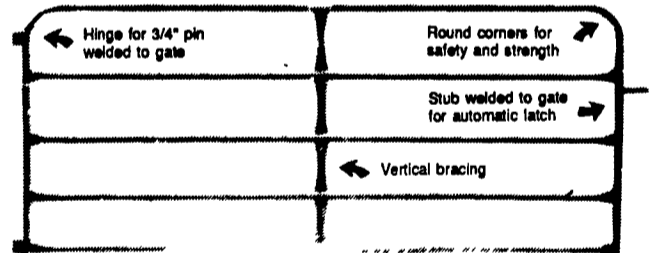
PAUL B. ZIMMERMAN  
**Zimmerman**  
INC

### GATES and FENCING



Coated With Baked On Top Grade Polyester  
TGIC Powder Coating After Fabrication

- Super tough finish
- Superior electrical insulation
- Resists acid & chemicals
- Protection from rust & corrosion
- Chip resistant
- Smoother finish, stays cleaner



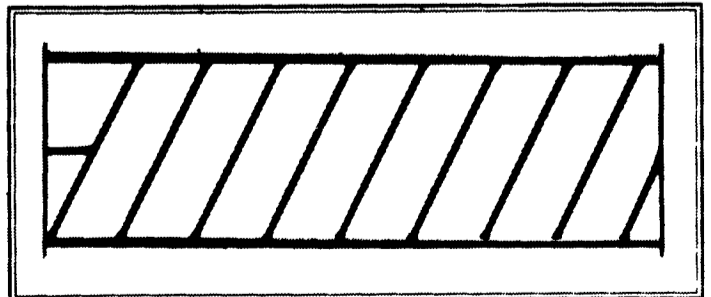
Standard Heights For Gates & Fencing:  
(38" High - 4 Bar) (48" High - 5 Bar) (54" High - 6 Bar)

NOTE:

- 13 Ga. steel 15% heavier than 14 Ga. steel
- 13 Ga. steel 45% heavier than 16 Ga. steel
- 13 Ga. steel 85% heavier than 18 Ga. steel

All Gates & Fencing Made Of 1.9" Outside Diameter  
High Yield Steel Tubing With 13 Ga. Wall

### SLANT BAR FEED THRU FENCE



— Custom Built To Any Length —

**PAUL B. ZIMMERMAN, INC.**

Call or Write For  
Additional Information  
And Your  
Nearest Dealer

Hours  
Mon. Thru Fri.  
7 to 5

295 Woodcorner Rd.  
Lititz, PA 17543-9165  
1 Mile West of Ephrata  
717-738-7365