

## YINGLINGS IMPLEMENT INC.

### New & Used Tractor & Equipment Parts

All Makes

#### OCTOBER PARTS SPECIAL COLLECTOR TRACTORS

MT JD; MJD;  
WD45 dsl. AC;  
Coop Tractor;  
06 IH  
737 Uni Husking Bed  
w/844W Corn Head  
\$8,500

717-359-4848

Take Exit 20B  
Off Of 83, 5 1/2 Mi. West  
To Belmont Farm.

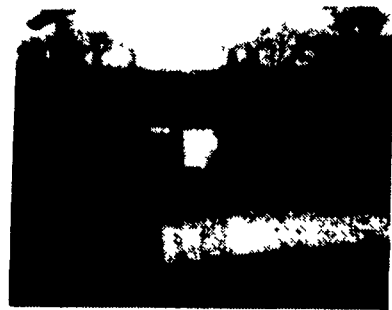


IH 856, 3 Pt., 100 H.P., Diesel, TA  
**\$5,800**

IH 1066, CAH, 100/1000, 115 H.P.  
**SOLD \$7,000**

Also Avail: IH 1466, CAH, 3 Pt.,  
540/1000, 145 H.P.  
**\$7,800**

Financing & Trucking Available  
**410-833-9091**



Farmall 230, Meyers blade,  
pull behind mower, \$1,600  
**(717) 656-4432**

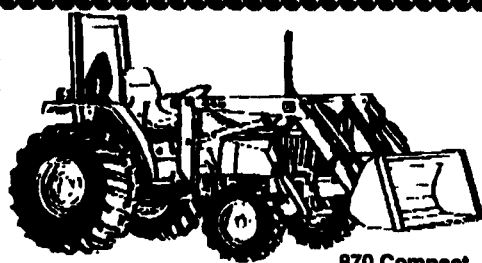
### MASSEY-FERGUSON

- MF 135 gas
- Ford 545A tractor loader, 300 hours
- Heaton 6450 SP Windrower
- NH 40 blower
- Woods C80 rotary cutter
- NH 688 left hand tank spreader
- NH 570 baler w/72 thrower
- NH 520 manure spreader
- MF 10 Baler
- NH 254 rake tedder
- NH 770W pickup head
- NH 851 Auto wrap baler
- Bush Hog 3216 10' rotary cutter

Coming In  
MF 135 Gas  
NH L553 Skid Steer



**NEWHOLLAND  
SCHREFFLER  
EQUIPMENT**  
Pitman, PA  
717-648-1120  
717-648-1811



870 Compact Utility Tractor

#### NEW JOHN DEERE COMPACTS

- Gator 4x2, lift, turf.....\$5,150
- JD 670 MFWD w/60 loader..... Cash \$12,495
- JD 870 MFWD tractor w/440 loader.Cash \$15,995
- JD 855 MFWD w/60" mid-mower..Cash \$15,879

#### NEW GEHL EQUIPMENT

- 3825SX Skid loader.....\$14,500
- CB1065 harvester.....\$13,999
- TR3038 row crop head.....\$4,299
- HA1210 7' pickup.....\$3,950

#### NEW BRILLION EQUIPMENT

- PDT14, pulverisor.....\$3,250
- BRS 630 no-till, 6R Cultivator.....\$3,800
- BRS 6302 6R Cultivator.....\$2,275

#### USED LAWN & GARDEN

- JD 430 Diesel w/60" mower.....\$5,595
- JD F935 w/60" mower.....\$4,995

#### USED TRACTORS

- JD 2350 SG cab.....\$16,500
- Farmall M.....\$1,395
- IH 3088.....\$9,900
- Ford 4000.....\$3,695

#### USED EQUIPMENT

- JD 45 Loader w/Hyd. Bucket.....\$595
- JD 1508 Rotary Cutter.....\$3,995
- JD 8300, 18x7 Drill.....\$2,495
- JD FBB Drill.....\$1,495
- (New) Amerequip 80A, 3 pt. Backhoe.....\$4,985
- NH 315 w/thrower.....\$2,995
- JD 210 disc harrow.....\$2,685
- JD 3940 Harvester w/5 1/2 pickup..... Call
- IH 440 baler w/thrower.....\$1,295
- KW blade, 6', power angle for JD 850.....\$895
- White 543 4R planter.....\$1,295
- IH 1150 grinder/mixer.....\$2,995
- (2) JD F145 5b plow.....\$775/EA
- JD 530 Round Baler.....\$9,900
- Woods 12' Stalk Cutter.....\$1,999
- JD 3R Head.....\$2,675
- Gehl 1250 Harvester, 2 Heads.....\$8,500

### GUTSHALLS, INC.

Carlisle      Loysville  
**(717) 249-2313    (717) 789-4343**

## LESTER HORNING

FARM EQUIPMENT  
LAWN & GARDEN  
EPHRATA, PA 17522  
717-738-1677

#### TRACTORS-LAWN & GARDEN

- JD 2440 diesel, indept. PTO.....**SOLD**.....CALL
- Farmall Cub w/Woods Belly mower.....\$2,150
- JD AMT 626-5 wheeler w/dump nice.....\$2,900
- JD 317 Hydro w/46" deck, nice.....\$2,200

#### GRINDER & MIXERS

- Gehl 100 hyd. drive, very nice.....\$4,000
- Gehl 100 hyd. drive w/scales.....\$4,200
- JD 700 hyd. load, excel. cond.....**SOLD**.....\$2,950

#### FORAGE EQUIPMENT

- Gehl 1560 Blower, good cond.....\$1,400
- JD 3940 Harvester w/ Elec. Cont. Field Ready..\$4,700
- Gehl 1580 Blower, 1000 RPM.....\$850

#### TILLAGE EQUIPMENT

- Oliver 548 plow, 4 x 16, S.R.S.A.....\$950
- IH 45 field cultivator w/ wings, 16'.....\$1,000
- JD 115 disc, 10', nice.....Call
- Oliver 348 plow, 3x16 spring reset.....\$1,050
- IH 720 plow 5.18, spring reset, nice.....\$2,400
- JD KBA disc, 24 blades.....\$550
- IH 510 grain drill, 13 disc w/grass.....\$1,450
- IH 510 Drill, 18 Disc w/ Grass, Nice.....\$1,750
- Brillion 12 1/2 Packer w/ Rear Transport Wheels \$950
- Brillion Packer, 10'.....**SOLD**.....\$575

#### HAY EQUIPMENT

- NH 489 haybine.....\$2,900
- IH 1100 pull type mower, nice.....\$850
- Gehl 260 rake spin type, nice.....\$1,250
- JD 327 baler w/thrower, good cond.....\$3,800
- Deutz Fahr Rake, Spin.....\$750
- NH 311 Baler w/Chute.....\$4,500
- NH 258 Rake, Good Cond.....\$1,750
- NH 273 Baler w/ Chute.....\$1,200
- NI 272 Cuditioner, 7' Good Cond.....\$1,200
- NH 56 Rake.....\$950

#### MISCELLANEOUS

- JD 450 hydro push spreader, good cond..Coming In
- NI 323 corn picker, very nice.....\$2,150
- JD 680 Spreader, Tandem Axle, 2 Beater.....\$1,450
- NH 514 Spreader, Single Beater, Good Cond...\$1,450

### Excellent Ford Tractors

- TW-35 II, 4WD, cab, air, 20.8x38, weights, 1,500 hrs.
- 7710 II, DP, dual remotes, 18.4R x 34, 1,600 hrs.
- 7710, cab, air, DP, dual remotes, 18.4x34, 1,600 hrs.
- 7610 II, cab, air, DP, dual remotes, 1990, 800 hrs.
- 7610 II, 16.9 x 38, DP, dual remotes, 500 hrs.
- 7600, Roll Bar, 16.9x38, 1981, 3,200 hrs.
- 7000, cab, flat deck, DP, 540 & 1000 RPM
- 7000, DP, dual remotes, 1974 flat deck mod.....**SOLD**
- 6610 II, 4WD, DP w/Ford loader, 1,000 hrs.
- 6600, 4WD, 1981, DP w/Ford QT loader, 2,800 hrs.
- 5610, DP, 18.4x30, 1,800 hrs.
- 4630, cab, 4WD, shuttle w/Ford loader, 1,000 hrs.
- 4600 SU, diesel w/Ford 7209 ldr, 1,800 hrs.
- 4600, diesel, 16.9x30, 1981, 3,200 hrs.
- 4000, diesel, 8 spd., PS, w/QT loader
- 4000 SU, diesel, 14.9 x 28 w/loader
- 3930, 4WD, 14.9x28 w/Allied 394 loader w/230 hrs.
- 3000, gas, 8 spd., PS, 13.6x28, 3,200 hrs.
- 3000, Diesel, PS, 13.6x28
- 1920, 4WD, Shuttle, Ford Ldr, 400 hrs.
- 1720, 4WD, shuttle, 260 hrs.
- 1710, Offset w/ cultivators, side dressers & creeper gears, 650 hrs.
- NH 565 LX, diesel skid loader, 10 hrs.
- JD 2350, hi-low, 1983 model, 2,500 hrs.

#### Equipment

- NI 325 corn picker, 2RN, 12 roll, we bought it new
- FNH 492 haybine, w/hyd. swing, like new
- FNH 489 haybine w/ stub guards
- NH 354 grinder mixer w/unload extension
- FNH 144 windrow inverter
- FNH 254 rake and tedder
- Sauder snow blade
- Weights & roll bars to fit most Ford tractors
- 13.6x28 turf tires, excellent

#### Ford Loaders

- 7410 QT fits 2WD & 4WD, 5610 thru 7610
- 7210 QT fits 2 WD, 5000 thru 7610
- 772 QT fits 2WD, 5000 thru 7610

All Tractors Tested On Our Farms.  
-Please Call For Appointment-

### Burkholder Bros.

Lebanon, PA  
(2 miles West of Schaefferstown)  
**717-272-2352    717-949-2123**  
Lloyd      Leon  
330 Crest Rd.      400 Flintville Rd.

# HERNLEYS FARM EQUIP. INC.

(717) 367-8867

2095 S. Market St., Elizabethtown, PA 17022



Hesston Hay Equipment  
**0% Financing until July 1996**



#### HAY EQUIPMENT

- HESSTON 1130 9 FT. Mower cond.
- HESSTON 1160 12 ft. Mower cond.
- HESSTON 7155S Forage Harvester w/Heads
- HESSTON 4755 Mid-Size Baler

#### MANURE SPREADERS

- 1 - Hesston 390 Tandem Axle
- 1 - Hesston 320 Tandem Axle

#### NEW TRACTORS

- AGCO ALLIS 5670 AWD

#### USED TRACTORS

- AC 190 XT
- AC 5050 AWD w/400 Series Loader
- AC 200
- White 2-155, 2WD, w/Duals (Nice Condition)

#### USED EQUIPMENT

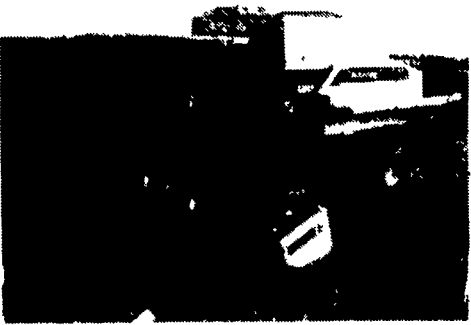
- Vicon Sprayer 40' Boom - Never Used
- AC Disc 13.5 ft.
- NH 489 haybine
- Hesston 1130 - Like new condition!

**AGCO ALLIS** Partners For Tomorrow

When You Want Service You Can Count On Us

## Your GLEANER COMBINE Sales and Service Dealer

See What A Quality GLEANER COMBINE Can Do For YOU In The Field



Talk To Us For A Demonstration In Your Field.

#### NEW COMBINES

- R52 Combine
- R42 **SOLD** line
- 500 Series — 25' Flex Head
- 20' Flex Head
- 630 Hugg **SOLD** n Head

#### USED COMBINES

**LOOK Just Traded** 1993 New Holland TR 86 With 6 Row Corn Head and 16' Flex Head - Only 250 Hrs.

- Gleaner R-62 Combine, Excellent Condition, 3 Yrs. Warranty Left!
- Gleaner R-62, Excellent Condition, 2 Yrs. Warranty Left!
- NI 819/Combine **SOLD** Grain & Corn Head
- IH 1480/Combine w/17' Flex Head - Field Ready

#### USED CONVENTIONAL COMBINES

- 1 Gleaner L-2 Combine
- 2 1 Gleaner M-2
- Gleaner F-3
- 1 Gleaner L Combine

- Heads Available For All Above Models

### NEW EQUIPMENT

- MF 231 Tractor, \$11,700
- MF 232 Loader, \$3,900
- MF 360 Mid-Mount Mower Fits MF 300 Series GT, \$1,275

### USED EQUIPMENT

- Oliver 548 6x16 auto. Reset Plow, Semi-Mounted
- WT 281 14' Offset, 24 Blades, New Disc Brillion 16' Leveling Harrow, Folding New Teeth
- Case 1816 Skid Steer Loader \$5,995
- MF 240, low hrs, \$9,800
- Case/IHC 7130 4WD Duals & Weights CHA About 800 Hrs, \$61,500
- MF 3525 4WD & CHA, \$21,000
- Ferguson TO20 Re-sleeved Engine, \$1,800
- MF 510 CA w/13' Grain HD, \$3,250
- WT 15' Rigid Grain Head, \$1,250
- WT 13' Flex Grain Head, \$1,450
- WT 704W Corn Head, Good, \$1,850
- MF 1183 corn Head, Low Profile, \$5,400
- MF 925 MO-CO 9' Cut, \$2,850
- NH 330 Manure Spreader, As Is, \$300
- NH Hay Crimper, As Is, \$295
- Condor 7' 4 Blade Bush, \$625
- MF 520 22' Folding Disc, \$1,900
- IHC 510 5x18 Plow, \$645
- Bush Hog 170 3 Pt Ripper w/3 Stanks, \$1,200
- Woods RM306 72" Cut Mower, \$895
- MF 1231 Belly Mower for MF 1010, \$695
- Continental KTR-48 Finishing Mower, \$595
- 60" & 72" Stone Rakes, \$495 and up
- OL 3x16 Pull Plow, \$300
- MF 12 Hydro w/42" Mower, L&G, \$725
- Heckinger 36" Mower, 1 Yr Old, L&G, \$695
- IHC 56 Forage Blower, \$595

### GUS FARM EQUIPMENT, INC.

State Route 616  
Green Valley, PA  
17060  
Voice  
717-328-1967