

Take Exit 208  
Off Of 83, 5 1/2 Mi West  
To Belmont Farm



**JD 7520**

4x4, cab, 175 h.p., 3 pt., PTO, dual hyd.,  
hub duals, 1 owner

**\$11,000**

Financing & Trucking Available

**410-833-9091**

**ATTENTION FARMERS**

If you have deteriorating concrete masonry or stone walls, have it repaired with **GUNITE®**

For information and estimates call **Martins Silo Repair**  
**(717) 445-9834**

**TRACTORS**

MF 375, 4WD, 34 Hrs.  
Farmall 300  
MF 20C Tractor Loader w/cab (NEW)  
MF 65  
MF 1155 w/duals  
MF 3660 w/170 hours  
Hesston Flat 666 4WD tractor & loader

**COMBINES**

MF 550 combine w/13' table, new  
MF 760 combine  
MF 1143 corn head, used 200 acres

**SKID LOADERS**

Gehl SL4610 diesel  
Case 1830 skid loader  
MF 236 loader

**TILLAGE**

15' Dyna drive surface cultivator  
Brillion 12' soil groomer  
Kewanee off-set disc harrow

**MISC**

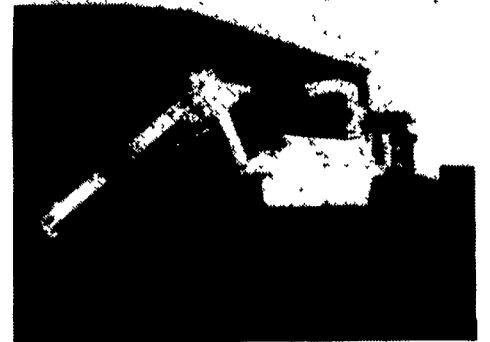
Gehl 7210 TMR mixer, 1 year old, nice  
Wic 3 pt hitch bedding chopper  
Wic Bedding Chipper w/Honda engine

**LONGENECKER'S INC.**

Williamsburg, PA 16693  
**814-793-3731**

**"HAY JAW"**

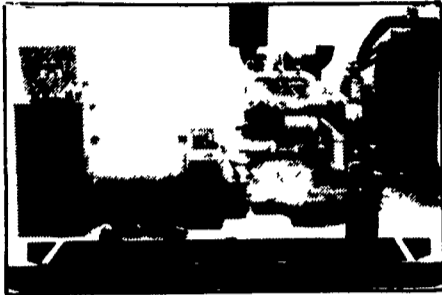
for cutting round and square bales  
\* Smooth, even cut with no wastage\*



Ideal for cutting hay to go into a TMR mixer or to be used for compost "Hay Jaw" is totally hydraulic and is equipped with controls to automatically operate unit. Please call for more info- unit in stock and available for demonstration.

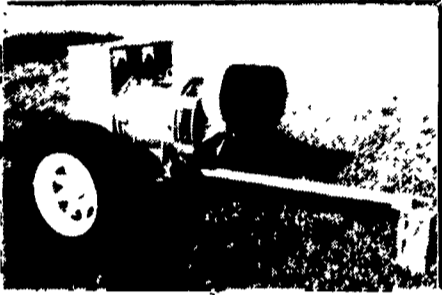
**MID-ATLANTIC AGRISYSTEMS**  
**800-222-2948**

**GENERATORS**



**AUTOMATIC and MANUAL SYSTEMS**

DIESEL  
L.P. GAS  
NAT. GAS  
NEW & USED



**LEROY SOMER PTO ALTERNATORS**

BRUSHLESS  
INDUSTRIAL GRADE  
11 to 60 KW

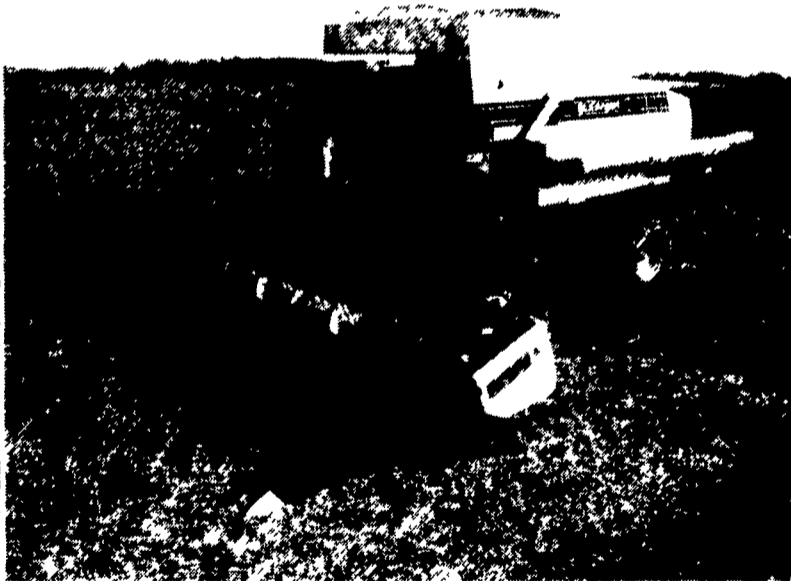
**READY FOR THE NEXT STORM?**

For Sales and Service Call The People Who Know Generators

**MARTIN ELECTRIC PLANTS**

280 Pleasant Valley Rd., Ephrata, PA 17522-8620

**Tel: 717-733-7968 Fax: 717-733-1981**



**New Gleaner R-62 w/Grain Head - Now In Stock!**

**USED EQUIPMENT**

Used NH, Gehl, Bobcat Skid Loader  
444 AC Baler  
NI Mounted Corn Picker  
JD 300 Corn Picker, 3 Row, Pull Type

**NEW & USED BOBCAT'S IN STOCK**

**FINANCING & LEASING AVAILABLE**

**SHIP PARTS DAILY UPS**

**GLEANER COMBINES**

LII Combine w/6 Row Cornhead & 15' Grain Head  
M Combine  
F w/Corn & Grain Head  
F II Combine  
MF 750 Combine w/Corn & Grain Heads

**USED TRACTORS**

Ford 861 Tractor Loader  
AC 7060 Powershift Tractor, Excel. Cond.  
IH 806  
AC-20 Skid Loaders  
AC XT190 Series III  
AC 7040 Powershift Tractor  
AC 70 Skid Loader  
AC 190XT (Good Cond.)  
IH 3444 With Loader  
Hesston 6066 Tractor, 4WD  
Oliver 66, Good Cond.  
Case 580B

New & Used Woods Mowers

Ontario Gear Drill

**Consider a REAL Open-Top Mixer**

REAL mixing with four large counter-rotating augers for fast, thorough blending of feeds. The large, flanged augers are designed specifically to evenly mix all ingredients. The mix is the same at the beginning, middle and end of feeding each batch.

REAL mixing-capacity numbers: You can use more of the Patz Mixer's struck-level capacity for mixing than with a reel-type mixer.

REAL strength with heavy-gauge steel sides and 3/8-inch-thick bottoms for long service life.

REAL primary drive reduction with a planetary gearbox.

REAL hay shelf and notched augers as standard equipment.

REAL Patz financing at affordable rates.

Ask to see the video of the REAL Patz Mixer. Also, we will be glad to do an on-farm demonstration.



**Cedar Crest Equipment**

Two Convenient Locations

608 Evergreen Rd. Lebanon, PA 17042 (717) 270-6600 1-800-646-6601  
RD 2 Box 271 East Earl, PA 17519 (717) 354-0584

WE CUSTOM DESIGN SYSTEMS FOR YOU

**SPECIAL OF THE WEEK**



MF 390 w/838 Loader, 1800 Hrs.

**\$19,000.00**

- IH 1086, cab & air, 1981, sharp..... \$16,000
- IH 1086, cab & air..... \$11,500
- IH 685 w/loader, shuttle shift..... \$14,250
- IH 500 ag crawler, gas, PTO, 3 pt., hyd., front weights..... \$5,900
- IH Farmall 230, fast hitch..... \$2,200
- Case IH 2096, cab, air, 4x4..... \$21,500
- MF 3650, cab, air, 4x4..... \$27,500
- MF 3650, cab & air, nice..... \$21,000
- MF 2745, cab & air..... \$7,500
- MF 1135, multi-power, cab..... Coming In
- MF 1130, multi-power, no cab..... \$4,800
- MF 699, cab & air..... \$14,000
- MF 390, diesel, multi powered..... \$13,900
- MF 390, 4x4, w/838 loader..... \$19,000
- MF 360, 4x4, w/loader..... \$15,000
- MF 285, multi power, cab..... \$6,500
- MF 255, diesel w/loader..... \$8,500
- MF 20, cab w/loader..... \$7,500
- Oliver 1855, diesel, WF..... \$5,800
- Oliver 1750, diesel, w/cab..... \$4,200
- JD 4320, diesel, WF..... \$9,300
- JD 4040, cab, quad..... \$17,000
- JD 4020, powershift..... \$8,500
- JD 3150, 4x4, 4 Post..... \$22,900
- JD 2840, hi-low shift..... \$7,600
- JD 2750 w/loader, hi-low shift..... \$17,500
- JD 2640, hi-low, 2 remotes **SOLD**..... \$12,800
- JD 2550, 4x4 w/loader..... \$18,000
- JD 330, diesel w/4' mower deck **SOLD**..... \$2,500
- Ford 7600, dual power..... \$7,400
- Ford 5000, cab..... \$6,500
- Deutz Allis 7085, 4 post, 2WD..... \$9,500
- Deutz Allis 6.5, cab, air, 2WD..... \$12,500
- Deutz DX160, cab, air, 2WD, 1000 shaft..... \$8,000
- Deutz DX140, 4x4, cab & air..... \$11,800
- Deutz DX120, 4x4, cab & air..... \$11,750
- AC D12 w/loader..... \$3,600
- AC 8070, powershift, 4x4..... \$26,000
- Cat D5 Ag crawler..... \$9,500
- Cat D4 Ag crawler..... \$7,500
- Gehl 4610 diesel skid loader..... \$9,500
- Taylorway 7' Soil Saver..... \$3,900
- NH 254 Rake Tedder..... \$2,400
- Hesston 3700 Rake Tedder..... \$1,400
- JD 8300 Grain Drill, 18 Run Grass Seeder..... \$1,800
- Morse no-till drill..... \$1,500
- Miller offset disc, 12'..... \$4,500
- MF 40 Offset Disc, 12'..... \$2,500
- Vicon discbine, 10'..... \$2,800
- Case 12' chisel plow..... \$1,100
- JD 4200, 4 btm., 2 way plow..... \$3,500
- (3) AC 12' field cultivators..... \$950
- 24' Fold-up Danish Tine field cultivator w/level harrow..... \$1,800
- 12' Brillion cultipacker..... \$800
- 6 Ft. 3 Pt. Rotary Mower..... \$850
- 7' 3 pt. heavy duty mower..... \$1,500
- JD 300 corn picker w/343 head..... \$5,000
- IH 7 Shank Auto Reset V Ripper..... \$4,900
- 18.4x38 & 20.8x38 duals..... \$1,000
- NI 551 baler w/thrower, like new..... \$3,200
- JD 4420 diesel combine..... \$9,000
- MF 1143 4RN corn head..... \$3,000
- JD 443 4 RN corn head..... \$3,500
- Gehl 99 silage blower..... \$850
- Kato-Light 10KW alternator..... \$1,000

MF 550 Hydro Combine w/9113 Flex Head  
.....Coming In

Financing Available

**L & M BURKHOLDER**  
Between Brownstown & Rothsville  
Ephrata, PA

Shop 717-859-6616

717-859-2960  
Mel (Residence)

717-859-2712  
Lloyd (Residence)

**GRUMELLI'S FARM SERVICE INC.**

929 ROBERT FULTON HWY.  
QUARRYVILLE, PA 17566

**717-786-7318**

1.5 Mile South Of Quarryville On 222  
See Salesman: Tony Grumelli, Don Fichtner

