

Junior And Open Beef Show Winners Listed

(Continued from Page D6)

CLASS 2381 - PAIR OF HEIFERS	ASHLEY VINTS, PURCELLVILLE, VA HARVEST PLANTATION, FRANKLIN, PA HUGHSON PINE FARM, TAYLOR, NY ALAN'S TRY-ON FARM, WAVERLY, NY PORTER'S SIMMENTAL LAKE RANCH, WAVERLY, NY
CLASS 2481 - SUMMER BULL CALVES, calved MAY 1 1995 and after	NO ENTRIES
CLASS 2581 - LATE SPRING BULL CALVES, calved April 1995	1 Sheenahoe Stealth Jet 2 Allegro 528 MAPLE COVE BREEDERS, PITTSBURGH, PA ALLEGRO FARMS, FRENDSBURG, NY
CLASS 2681 - EARLY SPRING BULL CALVES, calved March 1995	1 Meadow Hill Metador 2 WFF Six Nicholas 3 DEV Flash DONALD VINTS, PURCELLVILLE, VA HAYTH WOODS FARM, STONEDONO, PA DOUGLAS B VENTURE, J & R BAYLER, JOHNSTOWN, PA
CLASS 2781 - JUNIOR BULL CALVES, calved Jan-Feb 1995	1 Harvest Black Dog 2 Harvest Broedel 3 WY Black Smoke 4 WY State Trooper 5 WY Diesel 82 HARVEST PLANTATION, FRANKLIN, PA HARVEST PLANTATION, FRANKLIN, PA WOOLOOCH FARMS, GRANDEVILLE, PA WOOLOOCH FARMS, GRANDEVILLE, PA SARAH HERRICK, HIDDLESTON, PA
CLASS 2881 - JUNIOR CALF CHAMPION BULL	HARVEST PLANTATION, FRANKLIN, PA
CLASS 2981 - RESERVE JUNIOR CALF CHAMPION BULL	DONALD VINTS, PURCELLVILLE, VA
CLASS 3081 - WINTER BULL CALVES, calved Nov-Dec 1994	1 Porter's Signal Tie PORTER'S SIMMENTAL LAKE RANCH, WAVERLY, NY
CLASS 3181 - SENIOR BULL CALVES, calved Sept-Oct 1994	1 WFF Mr Red Basket 2 Porter's Country Boy HUGHSON PINE FARM, TAYLOR, NY PORTER'S SIMMENTAL LAKE RANCH, WAVERLY, NY
CLASS 3281 - SENIOR CALF CHAMPION BULL	HUGHSON PINE FARM, TAYLOR, NY
CLASS 3381 - RESERVE CALF CHAMPION BULL	PORTER'S SIMMENTAL LAKE RANCH, WAVERLY, NY
CLASS 3481 - SUMMER YEARLING BULLS, calved May-Aug 1994	1 Sheenahoe's Port Rock MAPLE COVE BREEDERS, PITTSBURGH, PA
CLASS 3581 - LATE JUNIOR YEARLING BULLS, calved March-April 1994	1 Harvest Klondike HARVEST PLANTATION, FRANKLIN, PA
CLASS 3681 - EARLY JUNIOR YEARLING BULLS, calved Jan-Feb 1994	NO ENTRIES
CLASS 3781 - JUNIOR CHAMPION BULL	HARVEST PLANTATION, FRANKLIN, PA
CLASS 3881 - RESERVE JUNIOR CHAMPION BULL	MAPLE COVE BREEDERS, PITTSBURGH, PA
CLASS 3981 - SENIOR YEARLING BULLS, calved Sept-Dec 1993	NO ENTRIES
CLASS 4081 - LATE TWO YEAR OLD BULLS, calved May-Aug 1993	1 Swift WFF Choyenne PORTER'S SIMMENTAL LAKE RANCH, WAVERLY, NY
CLASS 4181 - EARLY TWO YEAR OLD BULLS, calved Jan-April 1993	NO ENTRIES
CLASS 4281 - SENIOR CHAMPION BULL	PORTER'S SIMMENTAL LAKE RANCH, WAVERLY, NY
CLASS 4381 - RESERVE SENIOR CHAMPION BULLS	NO ENTRIES
CLASS 4481 - GRAND CHAMPION BULL	HARVEST PLANTATION, FRANKLIN, PA
CLASS 4581 - RESERVE GRAND CHAMPION BULL	DONALD VINTS, PURCELLVILLE, VA
CLASS 4681 - PAIR OF BULLS	1 Harvest Plantation, Franklin, PA 2 Porter's Simmental Lake Ranch, Waverly, NY 3 Maple Cove Breeders, Pittsburgh, PA 4 Tice Farms, Lawrenceville, PA HARVEST PLANTATION, FRANKLIN, PA PORTER'S SIMMENTAL LAKE RANCH, WAVERLY, NY MAPLE COVE BREEDERS, PITTSBURGH, PA TICE FARMS, LAWRENCEVILLE, PA
CLASS 4781 - GET-OF-SIRE-FOUR ANIMALS	1 ALLBONO FARMS, FRENDSBURG, NY
CLASS 4881 - PRODUCE OF DAN-TWO OR MORE ANIMALS	1 Donald Vints, Purcellville, VA 2 Harvest Plantation, Franklin, PA 3 Tice Farms, Lawrenceville, PA
CLASS 4981 - BEST FIVE HEAD	1 Donald Vints, Purcellville, VA 2 Harvest Plantation, Franklin, PA 3 Porter's Simmental Lake Ranch, Waverly, NY 4 Tice Farms, Lawrenceville, PA
CLASS 5081 - PREMIER EXHIBITOR	HARVEST PLANTATION, FRANKLIN, VA
CLASS 5181 - PREMIER BREEDER	DONALD VINTS, PURCELLVILLE, VA

CLASS 115 JUNIOR CHAMPION FEMALE (First prize winners from classes 8,9, and 10 competing)	WILLIAM HOFF, PURCELLVILLE, VA
CLASS 125 RESERVE JR CHAMPION FEMALE (Remaining first prize winners and second prize winner from the class that produced the Champion competing)	JENNIFER CAROL WILDESON, UNIONTOWN, MD
CLASS 135 JR YEARLING FEMALE (calved January 1 to February 29, 1994)	1 Wildmore Colors Star JENNIFER CAROL WILDESON, UNIONTOWN, MD
CLASS 145 SR YEARLING FEMALE (calved September 1 to December 31, 1993)	1 ON Cherry Blossom DUTCHLAND ACRES, CLARKSBURG, VA
CLASS 155 SENIOR CHAMPION FEMALE (First prize winner in classes 13 and 14 competing)	JENNIFER CAROL WILDESON, UNIONTOWN, VA
CLASS 165 RESERVE SENIOR CHAMPION FEMALE (Remaining first prize winner and second prize winner from the class that produced the Champion competing)	DUTCHLAND ACRES, CLARKSBURG, VA
CLASS 175 GRAND CHAMPION FEMALE (Calf champion, Jr Champion, Sr Champion, and Cow/Calf Champion competing)	ALAN BECK, LEHIGHTON, PA
CLASS 185 RESERVE GRAND CHAMPION FEMALE (Remaining Champions and Reserve Champion to the Grand Champion competing)	WILLIAM HOFF, PURCELLVILLE, VA
CLASS 195 GROUP TWO FEMALES (bred and owned or co-owned by breeder)	JENNIFER CAROL WILDESON, UNIONTOWN, MD DUTCHLAND ACRES, CLARKSBURG, MD PAUL SCHNEIDER, BUTLER, PA
CLASS 205 SPRING BULL CALVES (calved after March 1, 1995)	1 GWS Richelot 8011 2 SEN-DE-BAR SHORTHORNS, LAYTONVILLE, MD
CLASS 215 JR BULL CALVES (calved January 1 to February 29, 1995)	1 W Leaders Impact JOHN & CAROL WILDESON, UNIONTOWN, MD
CLASS 225 WINTER BULL CALVES (calved November 1 to December 31, 1994)	NO ENTRIES
CLASS 235 SENIOR BULL CALVES (calved September 1 to October 31, 1994)	NO ENTRIES
CLASS 245 CALF CHAMPION BULL (First prize winners from classes 20, 21, 22, and 23 competing)	SEN-DE-BAR SHORTHORNS, LAYTONVILLE, MD
CLASS 255 RESERVE CALF CHAMPION BULL (Remaining first prize winners and second prize winner from the class that produced the Champion competing)	JOHN & CAROL ANN WILDESON, UNIONTOWN, MD
CLASS 265 SUMMER YEARLING BULLS (calved July 1 to August 31, 1994)	1 Steele's Top Gun 264 ALLISON & WILLIAM HOFF, PURCELLVILLE, VA
CLASS 275 LATE SPRING YEARLING BULLS (calved May 1 to June 30, 1994)	NO ENTRIES
CLASS 285 EARLY SPRING YEARLING BULLS (calved March 1 to April 30, 1994)	NO ENTRIES
CLASS 295 JR YEARLING BULLS (calved January 1 to February 29, 1994)	1 Dutchland Vasey Chap 8170 DUTCHLAND ACRES/CARL HOLLAND III CLARKSBURG, MD
CLASS 305 JR CHAMPION BULL (First prize winners from classes 25, 26, 27, 28, and 29 competing)	DUTCHLAND ACRES, CLARKSBURG, MD
CLASS 315 RESERVE JR CHAMPION BULL (Remaining first prize winners and second prize winner from the class that produced the Champion competing)	ALLISON & WILLIAM HOFF, PURCELLVILLE, VA
CLASS 325 SR YEARLING BULLS (calved July 1 to December 31, 1993)	NO ENTRIES
CLASS 335 2 YR OLD BULLS (calved January 1 to June 30, 1993)	1 Dutchland Major Red 080 DUTCHLAND ACRES, CLARKSBURG, MD
CLASS 345 SR CHAMPION BULL (First prize winners from classes 32 and 33 competing)	DUTCHLAND ACRES, CLARKSBURG, MD
CLASS 355 RESERVE SR CHAMPION BULL (Remaining first prize winner and second prize winner from the class that produced the Champion competing)	NO ENTRIES
CLASS 365 GRAND CHAMPION BULL (Calf, junior and senior champions competing)	DUTCHLAND ACRES, CLARKSBURG, MD
CLASS 375 RESERVE GRAND CHAMPION BULL (Remaining Champions and Reserve Champion to the Grand Champion competing)	DUTCHLAND ACRES, CLARKSBURG, MD

CLASS 385 GROUP OF TWO BULLS	1 DUTCHLAND ACRES/CARL HOLLAND III, CLARKSBURG, MD
CLASS 395 SUPER COW CLASS	1 PAUL SCHNEIDER, BUTLER, PA 2 JENNIFER CAROL WILDESON, UNIONTOWN, MD
CLASS 405 GET-OF-SIRE	1 JENNIFER CAROL WILDESON, UNIONTOWN, MD
CLASS 415 BEST SIX HEAD (owned or co-owned by exhibitor)	1 DUTCHLAND ACRES, CLARKSBURG, MD
CLASS 425 PREMIER EXHIBITOR - Award is computed from winnings in the open single classes with 3 points for 1st place and Grand Champion, 2 points for second place and Reserve Grand Champion, and one point for 3rd place. No points for individual champions or group classes. Points will accumulate for those animals with exactly the same owner as recorded on the registration certificate.	DUTCHLAND ACRES, CLARKSBURG, MD
CLASS 435 PREMIER BREEDER - Award is computed from winnings with 5 points for 1st place, four points for 2nd place, 3 points for 3rd place, 2 points for 4th place, and one point for 5th place. Points are awarded to exhibitors for animals shown in open single classes, including those bred in partnership. No points for Champion or group classes. In case of tie, sixth place to be counted on a one-point basis.	JOHN & CAROL WILDESON, UNIONTOWN, MD

(Turn to Page D8)



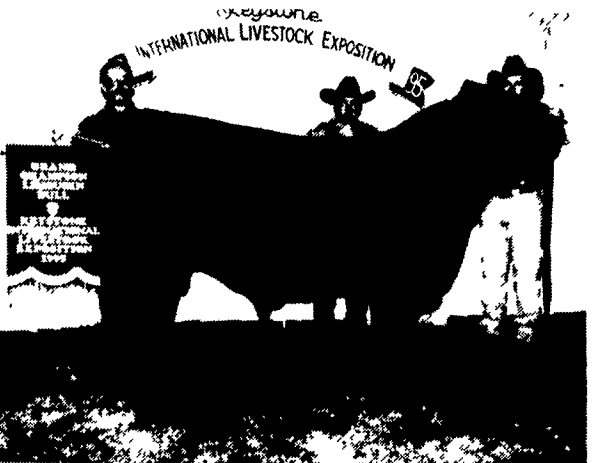
The grand champion pen of feeder calves was shown by Mill Trail Farm, Janelew, WV.



The grand champion Simmental Bull was shown by Harvest Plantation, Franklin.



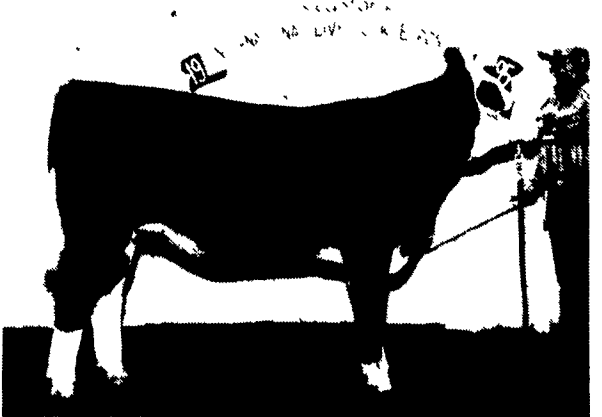
The grand champion Polled Hereford female was shown by Salunga Acres, Mt. Joy. The first place cow/calf are are shown with C. J. Furlong, Brett Barber, Tammi Grubb and Emille Miller.



The grand champion Limousin bull was shown by Maple Lane/Green Pastures/Fairlane Farms, Enon Valley.



The grand champion Polled Hereford female was shown by Salunga Acres, Mt. Joy. The first place cow/calf are are shown with C. J. Furlong, Brett Barber, Tammi Grubb and Emille Miller.



The grand champion Simmental female was shown by Harvest Plantation, Franklin.

1995 SHORTHORN BREEDING CATTLE		
CLASS 18 COW/CALF PAIR	1 WFF Pays 5th Ave Susie net PAUL SCHNEIDER, BUTLER, PA	
CLASS 28 SPRING HEIFER CALVES (calved after March 1, 1995)	1 SOB Great 8033 ET 2 WFF Flagg Lushy Chere x 3 WFF Unique Margie 557 ET SEN-DE-BAR SHORTHORNS, LAYTONVILLE, MD SHANNON SCHNEIDER, BUTLER, PA ALAN BECK, LEHIGHTON, PA	
CLASS 38 JR HEIFER CALVES (calved January 1 to February 29, 1995)	1 WFF Susette Chape x 2 W Anita Lee PAUL SCHNEIDER, BUTLER, PA JENNIFER CAROL WILDESON, UNIONTOWN, MD	
CLASS 48 WINTER HEIFER CALVES (calved November 1 to December 31, 1994)	NO ENTRIES	
CLASS 58 SR HEIFER CALVES (calved September 1 to October 31, 1994)	1 WFF Dream Girl 447x ET ALAN BECK, LEHIGHTON, PA	
CLASS 68 CALF CHAMPION FEMALE (First prize winners in classes 2, 3, 4, and 5 competing)	ALAN BECK, LEHIGHTON, PA	
CLASS 78 RESERVE CHAMPION FEMALE (Remaining first prize winners and second prize winner from the class that produced the Champion competing)	SEN-DE-BAR SHORTHORNS, LAYTONVILLE, MD	
CLASS 88 SUMMER YR FEMALE (calved between July 1 and August 31, 1994)	1 RCS Nancy Pearl A94 DUTCHLAND ACRES/CARL HOLLAND III, CLARKSBURG, MD	
CLASS 98 LATE SPRING YR FEMALE (calved May 1 to June 30, 1995)	1 Armstrong Party Girl 94 2 Woodside HH Princess DUTCHLAND ACRES/CARL HOLLAND III, CLARKSBURG, MD WILLIAM HOFF, PURCELLVILLE, VA	
CLASS 108 EARLY SPRING YR FEMALE (calved March 1 to April 30, 1994)	1 Woodside Instant Model 2 Wildmore Iris Mayberry 3 WFF Nice Denver 4 Woodside Unique Calico 5 Dutchland Beale Ice WILLIAM HOFF, PURCELLVILLE, VA JENNIFER CAROL WILDESON, UNIONTOWN, MD ALAN BECK, LEHIGHTON, PA ALAN BECK, LEHIGHTON, PA DUTCHLAND ACRES/CARL HOLLAND III, CLARKSBURG, MD	