

# KILE Swine Champions

(Continued from Page D3)

## CHESTER WHITE BREEDING SWINE

PLACE	ANIMAL NAME	EXHIBITOR NAME AND ADDRESS
1995 OPEN POLAND CHINA BREEDING SWINE		
<b>CLASS 56 - FEBRUARY BOAR</b>		
1	CBS DMCSP 3-7	BEHWCOFF, CHERYL, KUTSTOWN, PA
2	CBS Balance 3-8	BEHWCOFF, CHERYL, KUTSTOWN, PA
3	LONGS Solutions 9-2	MAPES, LELAND & FAMILY, UNIONVILLE CENTER, OH
4	KMS Eneers 6-1	BAUER, KENNETH, WOODBINE, MD
5	KMS Eneers 6-2	BAUER, KENNETH, WOODBINE, MD
<b>CLASS 57 - MARCH BOAR</b>		
1	LONGS Nr Solution 14-1	MAPES, LELAND & FAMILY, UNIONVILLE CENTER, OH
2	CBS Trucker 6-3	BEHWCOFF, CHERYL, KUTSTOWN, PA
3	KMS Eneers 9-1	BAUER, KENNETH, WOODBINE, MD
4	CBS Trucker 6-1	BEHWCOFF, CHERYL, KUTSTOWN, PA
5	FWF Wide Progressive 2-3	FRESER'S HOG FARM, NEW OXFORD, PA
<b>CLASS 58 - CHAMPION BOAR</b>		
MAPES, LELAND & FAMILY, UNIONVILLE CENTER, OH		
<b>CLASS 59 - RESERVE CHAMPION BOAR</b>		
BEHWCOFF, CHERYL, KUTSTOWN, PA		
<b>CLASS 60 - JANUARY GILT</b>		
1	LONGS Niss Solution 1-9	MAPES, LELAND & FAMILY, UNIONVILLE CENTER, OH
2	CBS No Concrete 3-1	BEHWCOFF, CHERYL, KUTSTOWN, PA
3	KMS Niss Eneers 4-3	BAUER, KENNETH, WOODBINE, MD
4	KMS Niss Eneers 4-6	BAUER, KENNETH, WOODBINE, MD
5	CBS No Modern 1-2	BEHWCOFF, CHERYL, KUTSTOWN, PA
<b>CLASS 61 - FEBRUARY GILT</b>		
1	LONGS Niss Solution 8-10	MAPES, LELAND & FAMILY, UNIONVILLE CENTER, OH
2	KMS Niss Triler 4-3	BAUER, KENNETH, WOODBINE, MD
3	CBS No Balance 3-1	BEHWCOFF, CHERYL, KUTSTOWN, PA
4	KMS Niss Eneers 4-3	BAUER, KENNETH, WOODBINE, MD
5	FWF No Impressive shoe 1-1	FRESER'S HOG FARM, NEW OXFORD, PA
<b>CLASS 62 - MARCH GILT</b>		
1	CBS No Trucker 6-5	BEHWCOFF, CHERYL, KUTSTOWN, PA
2	LONGS Niss Impact 11-4	MAPES, LELAND & FAMILY, UNIONVILLE CENTER, OH
3	KMS Niss Eneers 5-2	BAUER, KENNETH, WOODBINE, MD
4	KMS Niss Eneers 5-4	BAUER, KENNETH, WOODBINE, MD
5	CBS No Trucker 6-5	BEHWCOFF, CHERYL, KUTSTOWN, PA
<b>CLASS 63 - APRIL GILT</b>		
1	KMS Niss Eneers 10-4	BAUER, KENNETH, WOODBINE, MD
2	KMS Niss Eneers 10-3	BAUER, KENNETH, WOODBINE, MD
3	FWF No Tritan Niss 2-2	FRESER'S HOG FARM, NEW OXFORD, PA
4	CBS No Steamin 7-6	BEHWCOFF, CHERYL, KUTSTOWN, PA
5	CBS Concrete 8-8	BEHWCOFF, CHERYL, KUTSTOWN, PA
<b>CLASS 64 - CHAMPION GILT</b>		
MAPES, LELAND & FAMILY, UNIONVILLE CENTER, OH		
<b>CLASS 65 - RESERVE CHAMPION GILT</b>		
MAPES, LELAND & FAMILY, UNIONVILLE CENTER, OH		
CROSSBRED BARROWS		
PLACE	TATTOO #	EXHIBITOR NAME AND ADDRESS
<b>LIGHTWEIGHT</b>		
1	263	JAMES T PARLETT & SONS, AIRVILLE, PA
2	87	LAWRENCE BYRD, VIENNA, VA
3	60	NICK STRAUSS, EPHRATA, PA
4	140	KEITH BARD, PORTAGE, PA
5	64	PENN STATE UNIVERSITY, UNIVERSITY PARK, PA
<b>LIGHT MIDDLEWEIGHT</b>		
1	98	LAVERN & MARILYN WELLS, DWIGHT, IL
2	97	LAVERN & MARILYN WELLS, DWIGHT, IL
3	222	DAVID C HOLLOWAY, GLEN ROCK, PA
4	56	STEVE STRAUSS, EPHRATA, PA
5	86	LAWRENCE BYRD, VIENNA, VA
<b>MIDDLEWEIGHT</b>		
1	96	LAVERN & MARILYN WELLS, DWIGHT, IL
2	83	STRAUSS BROTHERS, EPHRATA, PA
3	156	CALVIN H LASARUS & SONS, WHITTHALL, PA
4	119	GRIG & DOUG KUSNER, ELIZABETHTOWN, PA
5	295	SUD STROHNER, WOODSTOCK, MD
<b>HEAVYWEIGHT</b>		
1	13	KENNETH WINEBARK & FAMILY, MYERSTOWN, PA
2	84	STRAUSS BROTHERS, EPHRATA, PA
3	88	STRAUSS BROTHERS, EPHRATA, PA
4	80	STRAUSS BROTHERS, EPHRATA, PA
5	289	JIN HECKEL, ROSEVILLE, OH
<b>CHAMPION CROSSBRED BARROW</b>		
98		LAVERN & MARILYN WELLS, DWIGHT, IL
<b>RESERVE CHAMPION CROSSBRED BARROW</b>		
13		KENNETH WINEBARK & FAMILY, MYERSTOWN, PA
1995 OPEN LANSHIRE BREEDING SWINE		
PLACE	ANIMAL NAME	EXHIBITOR NAME AND ADDRESS
<b>CLASS 45 - FEBRUARY BOAR</b>		
1	LANS Aris 4-11	Grant Lasarus III, Germansville, PA 18053
2	LANS Aris 4-10	Grant Lasarus III, Germansville, PA 18053
3	ALNS Omar 3-5	Alan & Mike Ray, Whiteford, MD 21160
4	RAPS Aris 10-11	Rocky Acres Farm, New Tripoli, PA 18066
5	ALNS Ives of K 3-6	Alan & Mike Ray, Whiteford, MD 21160
<b>CLASS 46 - MARCH BOAR</b>		
1	LANS Aris 16-5	Grant Lasarus III, Germansville, PA 18053
2	RAPS Aris 20-12	Rocky Acres Farm, New Tripoli, PA 18066
3	CBS Ives of K 4-11	Charles E. Griest, Abbotstown, PA 17301
4	LANS Aris 16-8	Grant Lasarus III, Germansville, PA 18053
5	RAPS Aris 20-5	Rocky Acres Farm, New Tripoli, PA 18066
<b>CLASS 47 - CHAMPION BOAR</b>		
Grant Lasarus III, Germansville, PA 18053		
<b>CLASS 48 - RESERVE CHAMPION BOAR</b>		
Grant Lasarus III, Germansville, PA 18053		
<b>CLASS 49 - JANUARY GILT</b>		
1	LANS Dera 8-6	Grant Lasarus III, Germansville, PA 18053
2	LANS Omar's Unique 2-1	Grant Lasarus III, Germansville, PA 18053
3	RAPS Dera 5-4	Rocky Acres Farm, New Tripoli, PA 18066
4	LANS Dera 5-6	Rocky Acres Farm, New Tripoli, PA 18066
5	LALS Wilma Be 1-3	Larry Robinson, Delta, PA 17314
<b>CLASS 50 - FEBRUARY GILT</b>		
1	LANS Omar 9-3	Grant Lasarus III, Germansville, PA 18053
2	RAPS Dera 14-5	Rocky Acres Farm, New Tripoli, PA 18066
3	LANS Omar 9-3	Grant Lasarus III, Germansville, PA 18053
4	ALNS Wilma Be 1-4	Alan & Mike Ray, Whiteford, MD 21160
5	CBS Wilma Be 2-3	Charles E. Griest, Abbotstown, PA 17301
<b>CLASS 51 - MARCH GILT</b>		
1	LANS Aris 16-4	Grant Lasarus III, Germansville, PA 18053
2	LANS Aris 16-2	Grant Lasarus III, Germansville, PA 18053
3	RAPS Tona 19-4	Rocky Acres Farm, New Tripoli, PA 18066
4	RAPS Tona 20-3	Rocky Acres Farm, New Tripoli, PA 18066
5	LALS Wilma Be 2-1	Larry Robinson, Delta, PA 17314
<b>CLASS 52 - APRIL GILT</b>		
1	LANS Aris 21-2	Grant Lasarus III, Germansville, PA 18053
2	LANS Aris 21-1	Grant Lasarus III, Germansville, PA 18053
3	LALS Wilma Be 4-4	Larry Robinson, Delta, PA 17314
4	CBS Wilma 4-3	Charles E. Griest, Abbotstown, PA 17301
5	LALS Wilma Be 4-1	Larry Robinson, Delta, PA 17314
<b>CLASS 53 - CHAMPION GILT</b>		
Grant Lasarus III, Germansville, PA 18053		
<b>CLASS 54 - RESERVE CHAMPION GILT</b>		
Grant Lasarus III, Germansville, PA 18053		

CLASS	ANIMAL NAME	EXHIBITOR NAME AND ADDRESS
<b>CLASS 12 - FEBRUARY BOAR</b>		
1	SLIS Matt 12-14	SCOTT LASARUS, GERMANSVILLE, PA
2	SLIS Matt, 12-12	SCOTT LASARUS, GERMANSVILLE, PA
3	CBS Duff 2-8	CHARLES E GRIEST, ABBOTTSTOWN, PA
<b>CLASS 13 - MARCH BOAR</b>		
1	SLIS Matt 13-9	SCOTT LASARUS, GERMANSVILLE, PA
2	LPS Cumalah 2-9	LEROY SCHAEFER, UPPERCOD, MD
3	S Fast Forward 3-1	RODGER BANKERT, HANOVER, PA
4	CLIS Matt 14-7	SCOTT LASARUS, GERMANSVILLE, PA
<b>CLASS 14 - CHAMPION BOAR</b>		
SCOTT LASARUS, GERMANSVILLE, PA		
<b>CLASS 15 - RESERVE CHAMPION BOAR</b>		
SCOTT LASARUS, GERMANSVILLE, PA		
<b>CLASS 16 - JANUARY GILT</b>		
1	SLIS BW 7-4	SCOTT LASARUS, GERMANSVILLE, PA
2	S No Mighty Special 1-3	RODGER BANKERT, HANOVER, PA
3	KWIS Jockle 3-5	KENNETH WETZEL & FAMILY, ROSSITER, PA
4	SLIS BW 7-4	SCOTT LASARUS, GERMANSVILLE, PA
<b>CLASS 17 - FEBRUARY GILT</b>		
1	KWIS Suelle 3-9	KENNETH WETZEL & FAMILY, ROSSITER, PA
2	CBS Duff 2-7	CHARLES E GRIEST, ABBOTTSTOWN, PA
3	SLIS Matt 9-3	SCOTT LASARUS, GERMANSVILLE, PA
4	CBS Duff 2-6	CHARLES E GRIEST, ABBOTTSTOWN, PA
5	SLIS Paydays Special 11-1	SCOTT LASARUS, GERMANSVILLE, PA
<b>CLASS 18 - MARCH GILT</b>		
1	SLIS Paydays Belgian 16-1	SCOTT LASARUS, GERMANSVILLE, PA
2	SLIS Paydays Belgian 14-4	SCOTT LASARUS, GERMANSVILLE, PA
3	S No Mighty Special 2-6	RODGER BANKERT, HANOVER, PA
<b>CLASS 19 - APRIL GILT</b>		
1	S No Duncan 8-6	RODGER BANKERT, HANOVER, PA
2	LPS No Mighty Special 2-1	LEROY SCHAEFER, UPPERCOD, MD
3	LPS No Mighty Special 2-3	LEROY SCHAEFER, UPPERCOD, MD
4	S No DNF Duncan 8-8	RODGER BANKERT, HANOVER, PA
5	SLIS Matt 19-5	SCOTT LASARUS, GERMANSVILLE, PA
<b>CLASS 20 - CHAMPION GILT</b>		
KEN WETZEL, ROSSITER, PA		
<b>CLASS 21 - RESERVE CHAMPION GILT</b>		
RODGER BANKERT, HANOVER, PA		
PRIMIER EXHIBITOR		
SCOTT LASARUS, GERMANSVILLE, PA		

PLACE	ANIMAL NAME	EXHIBITOR NAME AND ADDRESS
HAMPSHIRE OPEN BREEDING SWINE		
<b>CLASS 34 - FEBRUARY BOAR</b>		
1	STRS Delby 3-4	DOMA & J C STRAWBRIDGE, WHITTHALL, PA
2	OWS Little Tornado 8-7	GARY N WINEBARK, ROSSITER, PA
3	LJAS John 8-3	LAWRENCE ANKOLD, HOWELSDORF, PA
4	OWS Little 2-1	GARY N WINEBARK, ROSSITER, PA
5	OWS Tornado's Boy 7-4	GARY N WINEBARK, ROSSITER, PA
<b>CLASS 35 - MARCH BOAR</b>		
1	Premier 46-1	RODIBAUGH & SONS, RENNSELAER, IN
2	OWS Noe's Carma 1-5	DAVID C HOLLOWAY, GLEN ROCK, PA
3	OWS Jelly 28-1	BATTLESHAKE MT FARMS, JULIAN, PA
4	STRS RT's 7-2	TODD BEHWCOFF, KUTSTOWN, PA
5	OWS 282828 11-5	CLYDE MCCONAUGHY, SHICKSBURG, PA
<b>CLASS 36 - CHAMPION BOAR</b>		
RODIBAUGH & SONS, RENNSELAER, IN		
<b>CLASS 37 - RESERVE CHAMPION BOAR</b>		
DAVID HOLLOWAY, GLEN ROCK, PA		
<b>CLASS 38 - JANUARY GILT</b>		
1	OWS Hi Sharon 3-2	CLYDE MCCONAUGHY, SHICKSBURG, PA
2	KMS Niss Sling Shot 1-4	BRUCE N SMITH, WASHINGTON, PA
3	OWS Hi Sharon 2-1	CLYDE MCCONAUGHY, SHICKSBURG, PA
4	OWS Niss Numbra 1-2	GARY N WINEBARK, ROSSITER, PA
5	STRS Delby 1-2	DOMA & J C STRAWBRIDGE, WHITTHALL, PA
<b>CLASS 39 - FEBRUARY GILT</b>		
1	OWS Tornado's Girl 8-1	GARY N WINEBARK, ROSSITER, PA
2	OWS Niss Tornado 7-2	GARY N WINEBARK, ROSSITER, PA
3	OWS Hi Sharon 5-1	CLYDE MCCONAUGHY, SHICKSBURG, PA
4	STRS Wide Blais 6-5	TODD BEHWCOFF, KUTSTOWN, PA
5	OWS Niss Annie 6-9	BRAD STULL, WOOTER, OH
<b>CLASS 40 - MARCH GILT</b>		
1	OWS Sharon 6-1	CLYDE MCCONAUGHY, SHICKSBURG, PA
2	OWS Sharon 8-2	CLYDE MCCONAUGHY, SHICKSBURG, PA
3	OWS No Monica 18-6	BRAD STULL, WOOTER, OH
4	OWS Adl Belle 28-2	BATTLESHAKE MT FARMS, JULIAN, PA
5	OWS Jelly Sharon 12-3	GARY N WINEBARK, ROSSITER, PA
<b>CLASS 41 - APRIL GILT</b>		
1	OWS Hi Sharon 19-7	CLYDE MCCONAUGHY, SHICKSBURG, PA
2	OWS Jelly A 12-1	CLYDE MCCONAUGHY, SHICKSBURG, PA
3	STRS Wide Don 16-10	DOMA & J C STRAWBRIDGE, WHITTHALL, PA
4	STRS Beady 6-2	LEROY SCHAEFER, UPPERCOD, MD
5	LPS Red Ellen 3-4	
<b>CLASS 42 - CHAMPION GILT</b>		
CLYDE MCCONAUGHY, SHICKSBURG, PA		
<b>CLASS 43 - RESERVE CHAMPION GILT</b>		
CLYDE MCCONAUGHY, SHICKSBURG, PA		

PLACE	TATTOO #	EXHIBITOR NAME AND ADDRESS
1995 JUNIOR BARROWS ON-FOOT		
<b>CLASS 50 - WEIGHT DIVISION 1</b>		
1	198	DEBBIE MCALLISTER, CENTRE HALL, PA
2	267	ADAM BELLER, THOMASVILLE, PA
3	199	DAN MCALLISTER, CENTRE HALL, PA
4	197	CHLERA MARTIN, CENTRE HALL, PA
5	249	CHUCKY ANDERSON, SMITHFIELD, PA
<b>CLASS 50 - WEIGHT DIVISION 2</b>		
1	8	JANINE WINEBARK, MYERSTOWN, PA
2	91	L DENISE EUG, HIFFLINTON, PA
3	248	CHUCKY ANDERSON, SMITHFIELD, PA
4	287	MATT TROSTLE, RED LION, PA
5	152	DOUG KOONTE, EVERETT, PA
<b>CLASS 50 - WEIGHT DIVISION 3</b>		
1	208	DEREK EARHART, ALBION, IN
2	209	DARBI EARHART, ALBION, IN
3	202	METH MCALLISTER, CENTRE HALL, PA
4	17	GERALD BOYD, EPHRATA, PA
5	7	BRANDON WINEBARK, MYERSTOWN, PA
<b>CLASS 50 - WEIGHT DIVISION 4</b>		
1	9	JANINE WINEBARK, MYERSTOWN, PA
2	246	JENNIFER CAROL WILDESEN, UNIONTOWN, MD
3	95	JOSEPH EUG, HIFFLINTON, PA
4	68	JASON SHINN, REHOBOT, PA
5	79	JENNIFER FLINCHBAUGH, YORK, PA
<b>CLASS 50 - WEIGHT DIVISION 5</b>		
1	58	DEREK EARHART, ALBION, IN
2	125	NICKI SMITH, NEW ENTERPRISE, PA
3	59	DARBI EARHART, ALBION, IN
4	284	JUSTIN GOOD, LITITI, PA
5	16	SARAH BOYD, EPHRATA, PA
<b>CLASS 50 - WEIGHT DIVISION 6</b>		
1	3	LANE INNERST, RED LION, PA
2	10	BRANDON WINEBARK, MYERSTOWN, PA
3	124	NICKI SMITH, NEW ENTERPRISE, PA
4	19	SARAH BOYD, EPHRATA, PA
5	41	JUSTIN GRAFF, PORT ROYAL, PA
<b>CLASS 51 - JUNIOR CHAMPION</b>		
34		DEREK EARHART, ALBION, IN
<b>CLASS 52 - RESERVE JUNIOR CHAMPION</b>		
110		NICKI SMITH, NEW ENTERPRISE, PA

-END-

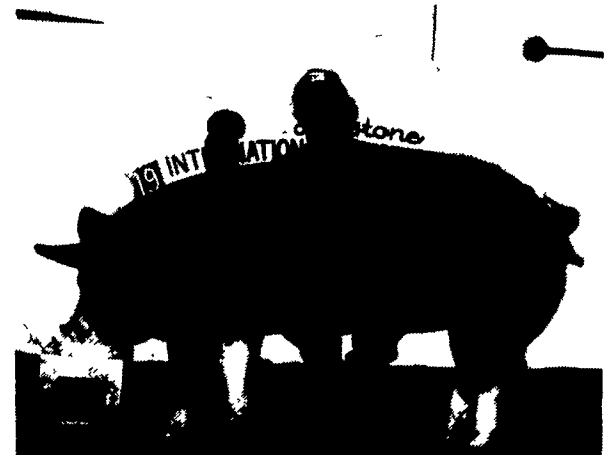
(Turn to Page D5)



Yorkshire breeding swine champion gilt, owned by Henry Holloway, Darlington, Md.



Duroc breeding swine champion boar, owned and shown by Howard Parrish.



Berkshire breeding swine champion gilt, owned and shown by Arlie Cornbower, New Freedom.



Poland China breeding swine champion boar, shown is Roger Allen for owner Leland Mapes and Family of Unionville Center, Ohio.



Hampshire breeding swine champion boar, owned and shown by Jack Rodibaugh and Sons, Rensselaer, Ind.