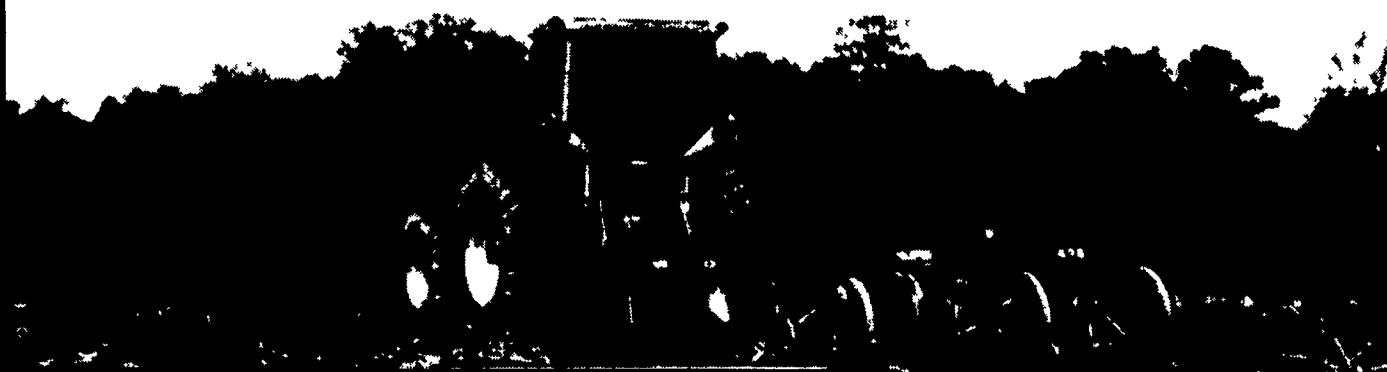


# You Can't Field Better Value



## Participating SAFEMARK Dealers

- |   |   |
|---|---|
| <b>Blair</b><br>Rhodes Farm Supply<br>Williamsburg, PA 16993<br>(814) 832-2491              | <b>Lancaster</b><br>Leola Tire Service<br>Leola, PA 17540<br>(717) 656-2574                           |
| <b>Bradford/Sullivan</b><br>Hiland's Farm & Home Service<br>Rome PA 18837<br>(717) 744-2371 | <b>Massick Farm Equip., Inc.</b><br>Elizabethtown, PA 17022<br>(717) 387-1319                         |
| <b>Bradford</b><br>Isaac's Tire Sales<br>Canton, PA 17724<br>(717) 673-8121                 | <b>Rhoedstar • Retreading</b><br>Quarryville, PA<br>(717) 786-2178                                    |
| <b>Centre</b><br>Dunkle & Grieb<br>Centre Hall, PA 16828<br>(814) 364-1421                  | <b>Lebanon</b><br>Farr Family Tire<br>Palmyra, PA 17078<br>(717) 838-0151                             |
| <b>Chester/Delaware</b><br>Enfield Equipment Inc<br>Oxford, PA 19350<br>(610) 932-8858      | <b>Lebanon Valley Implement Co., Inc.</b><br>Richland, PA 17087<br>(717) 866-7518                     |
| <b>J&amp;L Tire Service</b><br>Chatham, PA 19318<br>(610) 869-0450                          | <b>Lehigh</b><br>Kermit K. Kistler<br>Lynnport, PA 18066<br>(610) 298-2011                            |
| <b>S.G. Lewis &amp; Sons</b><br>West Grove, PA 19380<br>(610) 869-2214                      | <b>Joe's Battery &amp; Tire</b><br>Allentown, PA 18103<br>(610) 437-4961                              |
| <b>Stoltzfus Farm Service</b><br>Cochranville, PA 19330<br>(610) 593-2407/2408              | <b>Mifflin</b><br>Miller-Lake, Inc.<br>Belleville, PA 17004<br>(717) 935-2335                         |
| <b>Clinton</b><br>Dotterer Equipment, Inc.<br>Mill Hill, PA 17751<br>(717) 726-3471         | <b>Montour</b><br>Steve Shannon Tire<br>Danville, PA 17821<br>(717) 275-5506                          |
| <b>Columbia</b><br>Steve Shannon Tire Co., Inc.<br>Bloomsburg, PA 17815<br>(800) 343-TIRE   | <b>Northampton/Monroe</b><br>Northampton Farm Bureau<br>Tatamy, PA 18085<br>(610) 759-3254            |
| <b>Rte. 487, Benton, PA 17814</b><br>(717) 925-2821   | <b>Northumberland</b><br>Rovendale Supply<br>Watsontown, PA 17777<br>(717) 538-5521<br>(717) 742-7521 |
| <b>Cumberland</b><br>Barrick Tire Sales<br>Newville, PA 17241<br>(717) 776-5762             | <b>Schuykill</b><br>Charles Snyder, Inc.<br>Tamaqua, PA 18252<br>(717) 386-5945                       |
| <b>Dauphin</b><br>Farr Family Tire<br>Middletown, PA 17057<br>(717) 944-4001                | <b>Union</b><br>Mifflinburg Farm Supply, Inc.<br>Mifflinburg, PA 17844<br>(717) 966-3114/3115         |
| <b>Franklin</b><br>Forrester Farm Equip., LTD<br>Chambersburg, PA 17201<br>(717) 263-0705   | <b>Allen Hoover Repair</b><br>Mifflinburg, PA 17844<br>(717) 966-3821                                 |
| <b>Stoneham's</b><br>Waynesboro, PA 17268<br>(717) 762-3614                                 | <b>Washington</b><br>Canonsburg Supply Equipment Co., Inc.<br>Canonsburg, PA 15317<br>(412) 746-2500  |
| <b>Bruce B. Gamble &amp; Sons</b><br>Concord, PA 17217<br>(717) 349-2670                    | <b>York</b><br>Corn Hill Farm, Inc.<br>Etters, PA 17319<br>(717) 938-2012                             |
| <b>Greene</b><br>Burns Tire Service<br>Waynesburg, PA 15370<br>(412) 627-8263               | <b>NEW JERSEY</b><br>Farmer's Brokerage & Supply, Inc.<br>Allentown, NJ 08501<br>(609) 259-7324       |
| <b>Fulton</b><br>Clugston Farm Equipment<br>Needmore, PA 17238<br>(717) 573-2215            |   |
| <b>Harryman Brothers Inc.</b><br>Hustontown, PA 17229<br>(717) 987-3431                     |   |

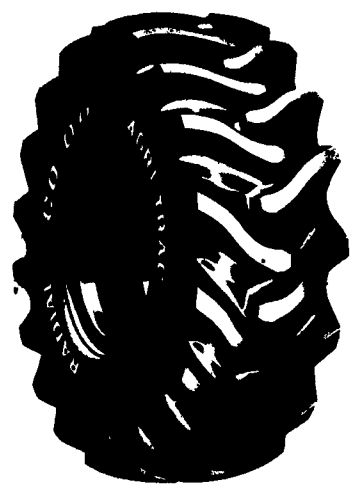
### AGRI TRAC LL

Radial performance at a significantly lower price

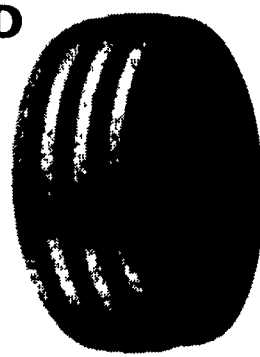
# \$359

15.5R-38 ★

- New cavity shape for low carcass stress and long, narrow footprint.
- Belt package gives excellent bruise and puncture resistance.

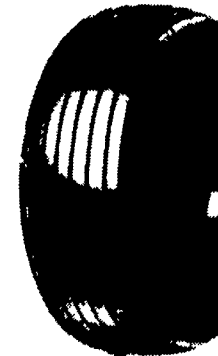


### AGRI-QUAD RIB FRONT TRACTOR TIRES



Size	Ply	Price
9.5L-15	8 Ply/TT	\$78.00
11L-15	8 Ply/TT	\$95.00
10.00x16	8 Ply/TT	\$91.00
11.00x16	8 Ply/TT	\$110.00

### FARM UTILITY WAGON TIRES



SIZE	PLY	PRICE
9.5L14	8 Ply TT	\$47.00
7.60x15	6 Ply TT	\$44.00
9.5L15	8 Ply TT	\$49.00
11L15	8 Ply TT	\$52.00
12.5L15	8 Ply TT	\$65.00

### AGRI POWER LB/SB

SIZE	PLY	PRICE
11.2-24	4 Ply	\$155.00
11.2-28	4 Ply	\$169.00
12.4-28	4 Ply	\$169.00
14.9-28	6 Ply	\$265.00
15.5-38	6 Ply	\$279.00
16.9-34	6 Ply	\$365.00
18.4-34	6 Ply	\$339.00
18.4-38	6 Ply	\$399.00
18.4-38	8 Ply	\$469.00
20.8-38	8 Ply	\$609.00

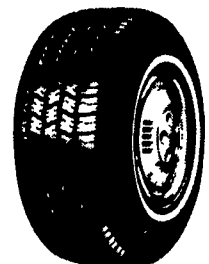
### CO-OP TRI-RIB

SIZE	PLY	PRICE
5.00-15	4 Ply	\$35.00
6.00-16	4 Ply	\$37.00
6.00-16	6 Ply	\$40.00
7.50-16	6 Ply	\$59.00
10.00-16	8 Ply	\$88.00
11.00-16	8 Ply	\$109.00



### PARKWAY 880 PLUS

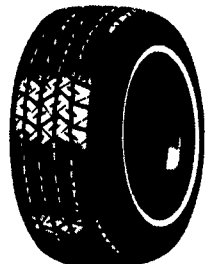
WHITEWALLS



SIZE	PRICE
P155/80R13	\$30.50
P185/80R13	\$31.50
P175/80R13	\$32.50
P185/80R13	\$34.00
P185/75R14	\$34.50
P195/75R14	\$36.00
P205/75R14	\$37.00
P205/75R15	\$39.00
P215/75R15	\$40.50
P225/75R15	\$43.50
P235/75R15	\$44.50

### TOURING SUPREME SE

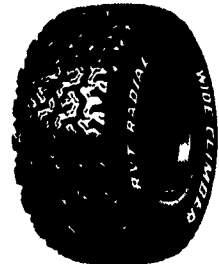
60,000 Miles/ 60 Months Limited Tread Wear Warranty



SIZE	PRICE	SIZE	PRICE
P185/75R14	\$48.00	P185/70R14	\$49.00
P195/75R14	\$51.00	P195/70R14	\$52.00
P205/75R14	\$52.00	P205/70R14	\$54.00
P205/75R15	\$55.00	P215/70R14	\$56.00
P215/75R15	\$56.00	P205/70R15	\$57.00
P225/75R15	\$60.00	P215/70R15	\$58.00
P235/75R15	\$63.00	P225/70R15	\$62.00
P205/65R15	\$57.00		

### RVT RADIAL ALL TERRAIN

OUTLINE WHITE LETTERS



SIZE	LD. RNG.	PRICE
30x9.50R15LT	C	\$85.00
31x10.50R15LT	C	\$90.00
32x11.50R15LT	C	\$95.00
33x12.50R15LT	C	\$105.00
L235/75R15	C	\$77.00
L265/75R16	D	\$85.00
P205/75R14	SL	\$53.00
P205/75R15	SL	\$56.00
P215/75R15	SL	\$58.00
P235/75R15	SL	\$62.00

# SAFEMARK

Division of Pennsylvania Farm Bureau  
Camp Hill, PA 17011

- QUALITY
- SERVICE

- DEPENDABILITY
- ECONOMY

CALL 1-800-PFB-TIRE For Dealer Nearest You

NOW SERVING NEW YORK, NEW JERSEY & CONNECTICUT