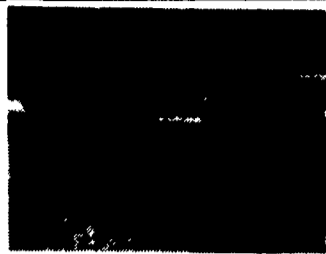


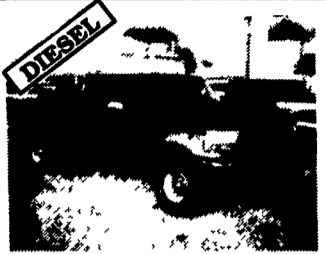
Bobby Gern Truck World

Mon. - Fri. 9-5 Sat. 9-4

**OVER
120
TRUCKS**



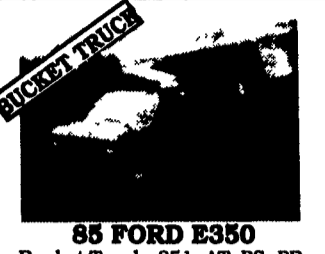
91 DODGE D350 4x4
Cummins Turbo Diesel, AT, A/C,
PS, PB, Red w/Grey Int.



94 FORD F250 Super Cab
4x4, 7.3L Diesel, XLT Lariat, AT, AC,
PW, PL, C. T. Maroon/Silver #F397



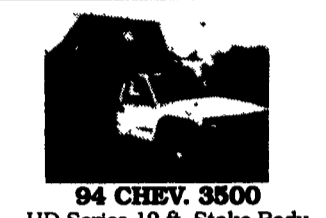
89 DODGE D250 4x4
Cummins Turbo Diesel, AT, PS, PB,
#D144



85 FORD E350
Bucket Truck, 351, AT, PS, PB,
ONAN 5KW Generator, 27 Ft.
Working Height. Ready to Work
#F403



88 FORD F450 DUMP
Super Duty, 460 V8, 5-Spd.,
PS, PB, L-PAC Dump, only
51,000 Miles #F402



94 CHEV. 3500
HD Series 12 ft. Stake Body
Dump, 6.5L, Turbo Diesel,
AT/OD, AC, PS, PB, Chrome
Wheels, only 24,000 Miles
#G141



**90 DODGE B350 HI-TOP
MINI-BUS**
Complete w/Wheel Chair Lift &
Seating, 360, AT, Dual A/C, PS,
PB, 60,000 Mi., Hard To Find
#D140



85 INT'L. S1700 DUMP
w/15 ft. Plow, DT466 Diesel,
28,000 Orig. Miles, 5-Spd.,
2-Spd, Rear, PS, PB, Ex. Cond.,
28,000 GVW

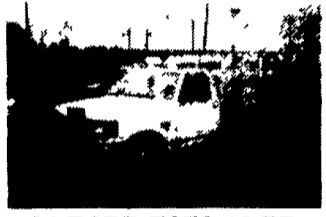


**89 GMC C3500 STAKE BODY
DUMP 4x4**
EFI 350, AT, A/C, PS, PB, Dual
Rear Wheel w/Complete Western
Plow, Pkg., 9 ft. Elect. Dump,
70,000 Mi, Nice Condition #G140



80 INT. S1700 DUMP
15 Ft. Plow, 360 Gas, 5+2, PS,
PB, 26,000 GVW. #1108

**THIS WEEK'S
SPECIAL \$5,995**



**91 FORD F350 12 FT
STAKE BODY**
EFI 351, AT/OD, A/C, PS, PB, AM/FM
Stereo, Complete with Power Lift Gate &
Western Snow Plow Pkg. only 8,700 Orig.
Miles, Showroom Cond. #F398



86 FORD F350 CREW CAB
Dually, 460 V8, AT, A/C, C. T.,
Centurion Pkg., #F351
SPECIAL \$8,995

DT466 diesel engine,
1985, very little use, take
out from government, off-
road equipment, complete
w/air compressor and rot-
ary pump, \$2000.
610-942-4116.

Ford 77' F750 18' van, me-
chanical in good cond.,
alum. body, ripped on top,
very good tires 10.00x20,
2sp rear, 5sp transmission,
391 eng., \$900. OBO: Call
for information;
215/968-5604.

Cheap way to haul grain:
1974 U-model Mack w/22'
dump trailer, farm truck,
\$5,000 firm.
(717)235-2409.

Chevy C3500 dually '89
7.4LV8, auto, PS/PB, AM/
FM, AC, 45,000 miles,
\$9,000. (609)737-0445.

WILLIAM H. WESSELS USED CARS

Lease or Bank Financing Available



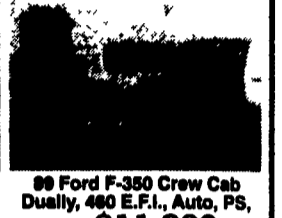
95 Nissan Pathfinder XE V6,
Auto, PS, PB, AC, 21,200
Miles **\$22,900**



88 Ford F250 Ext-Cab 4x4,
Utility Box, 351 V8, Auto, PS,
AC **\$8,990**



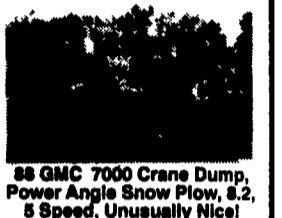
82 Ford F700 Hi & Her's
Two-Man Bucket Truck, 41'
Platform Height **\$14,900**



89 Ford F-350 Crew Cab
Dually, 460 E.F.I., Auto, PS,
AC **\$11,900**



87 Ford F-350 Crew Cab
V-8, Auto, PS, AC
\$6,750



88 GMC 7000 Crane Dump,
Power Angle Snow Plow, 8.2,
5 Speed, Unusually Nice!
\$11,900



87 IHC-1600 14' Box Diesel,
Nice
\$8,750



91 Ford E150 Cargo Van
4.9 Liter, 6 Cyl., Auto,
PS, PB, AC
\$7,990



93 Chevy Suburban 4x4,
Fully Equip., High Miles
\$17,900



85 Chev 4x4 w/Western Plow,
V8, Auto, 35,000 Miles
\$6,990



90 Dodge EXT Cargo Van
5.2 V-8, Auto, PS, AC, 99,602
\$6,990



94 Chev K3500 Turbo Diesel
4x4, Ext. Cab, Dually,
Silverado, 23,608
\$28,900



90 Chev K1500 4x4
Silverado, 350; 5 Speed,
Red, 88,200 Miles - Sharp
\$12,900



89 Chev 16' Flat Bed, 8.2
Diesel, 5+2 Speed, 28,000
GVW
\$9,900



87 FORD CF 6,000 Cab &
Chassis, 6 Cyl., Diesel, 5
Speed, 26,500 GVW, 157,000
Miles **\$8,900**



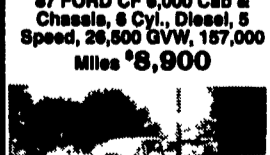
90 Jeep Cherokee Limited
4 Liter, Navy Finished, Fully
Equip., Local One Owner,
58,208 Miles
\$14,990



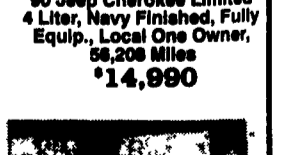
1987 Ford F150 Work Truck,
6 Cyl., Manual, "Not Fancy"
\$3,750



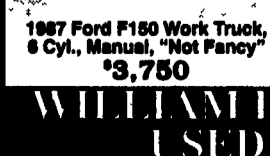
84 GMC 7000 CAB & CHASSIS
Deutz Air-Cool Diesel 5 & 2
Speed, 28,000 GVW, 142" CA
\$5,990



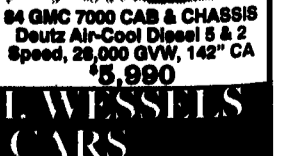
1987 Ford F150 Work Truck,
6 Cyl., Manual, "Not Fancy"
\$3,750



84 GMC 7000 CAB & CHASSIS
Deutz Air-Cool Diesel 5 & 2
Speed, 28,000 GVW, 142" CA
\$5,990



1987 Ford F150 Work Truck,
6 Cyl., Manual, "Not Fancy"
\$3,750

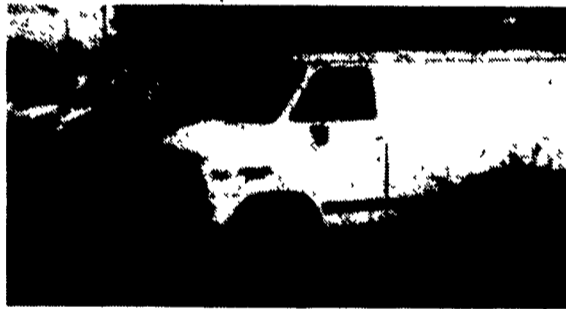


84 GMC 7000 CAB & CHASSIS
Deutz Air-Cool Diesel 5 & 2
Speed, 28,000 GVW, 142" CA
\$5,990

**WILLIAM H. WESSELS
USED CARS**
311 Route 15 Dillsburg, PA
1-800-440-4433 1-717-432-2918
Notary Public Temporary Tags

**CENTRAL
PA'S
LARGEST GM
DEALER**

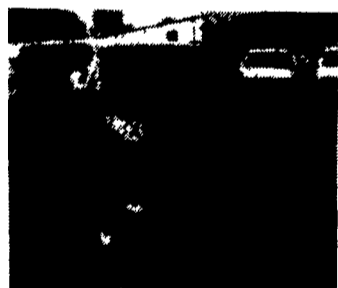
**CARGO VANS
G10's & G20's**
Free Bin Pkg.
Available to
Qualified
Buyers



**OVER
200 NEW &
USED
TRUCKS
IN STOCK**



**'95 CHEVROLET
CONVERSION VANS**
22 in stock, High top
and Low top



'95 ASTRO CARGO VANS
Interior Storage System Avail FREE
to Qualified Buyers,
Rear Wheel & AWD Avail.



**'95 & '96 CHEV.
SUBURBANS**
4x4's, Loaded



'94 CHEV TAHOES
4x4, Gas or Diesel
2 & 4 Door In Stock, Loaded



**'95 CHEV. 6.5 DIESEL
EXTEND CAB,
DUAL REAR WHEELS**
4x4 & 4x2, 8 in stock



'95 CHEV, 3/4 TON
8,600 GVW, Cheyenne and
Silverado. 5.7 & 6.5 Diesels.
11 In Stock

If We Don't Have It,
We'll Get It!

Frederick
The SUPERMARKET OF TRUCKS
(717) 274-1461 • (800) 222-5523

1505 Quentin Road,
Rt. 72 (South)
Lebanon, PA

• BILL MORTENSEN • BILL BREAUULT • BILL BAILEY • BARB KEEFER