

AG TRUCK BODIES



- * Unique Automatic Gate Lock
- * Tapered Design for Easy Unloading
- * Ladders Inside and Out
- * Tarp Rack

Truck Frame Alteration - Automatic Tarps - Hoists
Financing Available - Truck Location Assistance

CUSTOM BUILT - STRONG - DURABLE - CONVENIENT
Haul Silage, Feed Ingredients, Grain and More!

LIQUID MANURE INSERTS

COMING SOON! CALL FOR DETAILS ON THIS INNOVATIVE
NEW PACKAGE THAT WILL EASILY COVER THESE ALREADY
VERSATILE BODIES INTO LIQUID MANURE TANKS

Bruce MacRae

DeRuyter Welding & Machine Cortland Street, DeRuyter, New York
315-852-6123 or 315-852-6245 eve.

Royal Truck & Equipment, Inc.

6910 Route 309 Coopersburg, PA 18036

(610) 282-4090
(800) 283-4090

Coming Soon
Grain Body.

Just Off I-78, Between
Allentown & Quakertown
Financing Pre-Approved



1981 Inter/1854 10' Dump w/crane 34000
GVW DT466 5 sp PS AB PTO



89 IH S1855 18'
Lumber Dump PTO, DT 466, 7 Spd Spicer,
AB, Steel Bed & Bulkhead



87 Ford Crew Cab, 9L Del, 5 Spd, PS, Hyd,
PTO, Let Us Build Your Truck Today



1984 GMC 7000 4x4
10' Cab & Chassis; 27,080 GVW, 7L Gas,
5 Spd, PS, AB, PTO
Just Arrived Let us build your truck today



1987 F700 10' Dumps, 7.8L Turbo Del,
10 Spd, New Hobs, New Body,
30,000 GVW, AB



1986 FLC120T 400 Cat, Jake, 15 Spd, Air Ride,
Alum Wheels, New Tires,
Many Extras

TWO ACRES OF ALL TYPES USED TRUCKS.
"IF WE DON'T HAVE IT, WE'LL GET IT"

FOR SALE

1986 Nissan "UD" Truck
32,900 GVW, 1 Owner/Driver,
Good Rubber, Good Truck, 100,000 Mi.
\$9,500/OBO

**1991 36 ft. Car Carrier
5th Wheel Trailer**
Very Little Use, Great for Round Bales
\$1,800/OBO

814-632-8489 Evenings

Brand New Keller Built 16'
Stock Trailer, Used 1 Time,
\$3400. (717)938-4017.

C102D Commercial hydraulic pump w/PTO, Integral wetline unit; \$600.;
Manchester, MD;
410/374-4920.

'92 Chevy Tahoe S10, ext. cab, V8, 5 spd, PS, PB, AM-FM cassette stereo, 29,000 one owner miles, red & silver, like new, \$8,975. 717-733-2873

'92 Ford F150 Super Cab, 300 EFI, 5 spd., PS, PB, AM-FM, dual tanks, \$250 GVW, 45,000 miles, red, excellent condition, \$11,500. 717-733-2873

'92 Ford F250, 4wd, XLT Super cab, brilliant blue, like new, only 14,000 miles, 5 speed, V8, 480, PW, PDL, PS, PB, AG, AM FM stereo cassette, bed liner, bug shield, new tires, spot wheel cover, \$18,500 firm. Call Key 717-336-0880.



1000 TRUCK DIFFERENTIAL CARRIER ASSEMBLIES, Rockwell, Eaton, Spicer, International, GM, Call us for your needs.



(4) 1986 GMC Brig. SA, TT, 300 Cummins, 7 Speed, 84" CA, 24.5 Radials, Spokes, Fleet Maintained \$6,900



1987 VOLVO WHITE WCM64T TT, 315 BC3, RTO12609, SQ100 in 4 33, 22.5 Radials on Spokes, PS, New Paint, Fleet Maintained, Good Value \$12,900



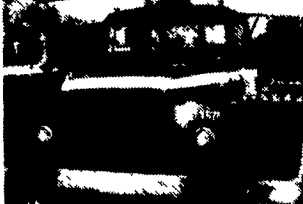
1987 INTERNATIONAL 9670 TT, 350 Cummins, RT11609, SQ100 Rears on 4 Spring, 24.5 Radials on Budds, PS, Good Value \$10,900



1988 WHITE GMC Brigadier TT, 315 Cummins, 9 Speed, SQ100 Rears in 3.55 Ratio, 22.5 Radials on Budds, PS, Good Buy at \$13,900



1981 MACK MS200 w/22' Van, Renault Diesel, 5 speed, PS, 23,660 GVW, Good Runner \$4,250



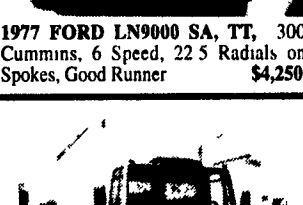
1977 FORD LN9000 SA, TT, 300 Cummins, 6 Speed, 22.5 Radials on Spokes, Good Runner \$4,250



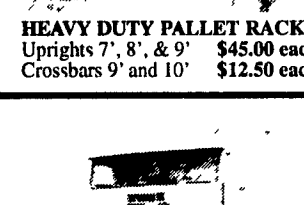
HEAVY DUTY PALLET RACKS, Uprights 7', 8', & 9' \$45.00 each
Crossbars 9' and 10' \$12.50 each



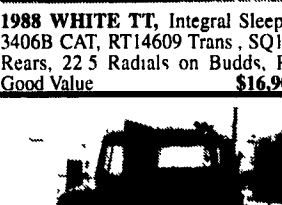
1988 WHITE TT, Integral Sleeper, 3406B CAT, RT14609 Trans, SQ100 Rears, 22.5 Radials on Budds, PS, Good Value \$16,900



1988 FORD 7000 CARGO w/16' Dry Van, 6 Cyl Ford Diesel, 5 Speed, 22.5 Radials on Budds, Air Brakes, PS, 29,500 GVW, \$8,900



1989 FREIGHTLINER TT, 350 Cummins, RTX12609A SQ100 Rears on Air Ride, PS, AC, 22.5 Radials, Great Value \$17,900



1986 FORD LN9000 TT, 315 Cummins, RT11609, DS381 Rears on 4 Spring, 24.5 Radials on Dayton, PS, New Paint Good But at \$12,900

FIRESTONE MOTORS, INC.

330 S. THIRD ST. • LEMOYNE, PA 17043 • (717) 763-7721

'82 Ford LNT8000

3208 Cat Engine, 10 Spd., 38 Rears, Only 165,000 Miles, w/1990 2010 Leader Lime & Fertilizer Spreader, Excellent Condition
\$17,900

(814)793-2339

EBY USED EQUIPMENT

BODIES

- (2) 10' Eby Cattle Bodies
- (2) 12' Eby Cattle Bodies
- (1) 15' Eby Cattle Body
- (1) 20' Eby Cattle Bodies
- (1) 22' Eby Cattle Body
- (1) 21' Steel Grain Body
- (1) 21' Eby Cattle Body

GOOSENECK

- 1994 Eby 20'x7 1/2' Wrangler
- 1994 Featherlight 4 Horse slant load
- 1987 Eby 20'x8' Cattle Trailer
- 1986 Barrett 22'x7'x7 1/2' Tall Double Deck
- 1984 Eagle 2 Horse 16'x6'x7'

M.H. Eby, Inc.

1194 Main Street (Route 23)
Blue Ball, PA 17506
(717) 354-4971 (800) 292-4752
FAX: (717) 355-2114

4435 State Route 29
West Jefferson, OH 43162
(614) 879-6901 (800) 752-0507
FAX: (614) 879-6904

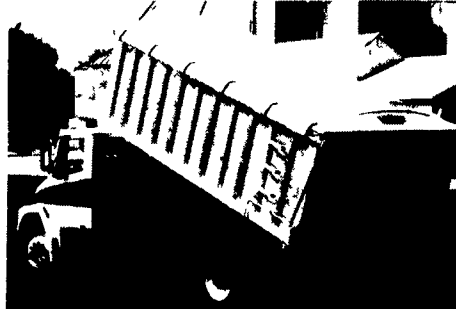
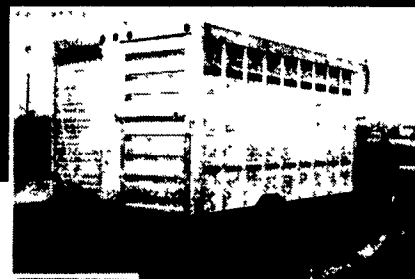
Agriculture Moves on EBY Bodies

M.H. Eby custom-builds aluminum truck-bodies for the agri-transportation market. Nobody offers more sizes and options in:

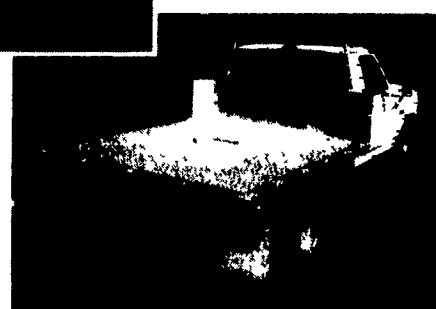
- **LIVESTOCK BODIES** - Lengths to 32', choice of heights and widths. -
- **GRAIN BODIES** - Lengths to 24'; landscape and general purpose dumps to 12'.
- **FLATBED BODIES** - Lengths to 32', choice of 5 widths.

For greater payload capacity, Eby's aluminum design is equal in strength to steel and up to 40% lighter. Our corrosion-resistant components never need painting. That means minimum maintenance, improved appearance and higher resale value.

Eby products have superior standard features. And we offer custom options for virtually any application. Agriculture is your business- building bodies to haul it is ours.



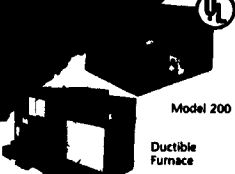
Let EBY custom build one for you.



M.H. EBY, INC.

1194 Main Street (Rt 23) • Blue Ball, PA 17506 • 800/292-4752 • 717/354-4971 • FAX 717/355-2114
4435 State Route 29 • West Jefferson, OH 43162 • 800/752-0507 • 614/879-6901 • FAX 614/879-6904

WASTE OIL



BOILERS & FURNACES

by **Shenandoah**
Since 1924
For Information Contact:
Neveco Central Heat
393 W. Lexington Rd.
Lititz, PA 17543
717-626-1479
Sales, Installation and Service