

MAJOR MARKET FOR SALE

Beef cows and calves mixed breed, 1 charlois young are simmental. Lebanon Co. 717-867-1653.

Wheel horse rototiller, 36" \$700. Skis and poles \$20. Organ \$60. Electric heaters \$5. Plastic barrels \$10. Schuylkill Co. 717-345-8723.

NI corn shelter off 325 picker \$300. 5 2000 bu wire corn cribs with roofs. Carroll Co. 410-635-6323.

1966 IH 1600 stake truck, wrecked, good motor, trans axles, new rear tires, best offer. York Co. 717-432-5661.

1000 gallon fuel oil storage tank on rubber with gas pump, elec clean pump leak \$750 OBO. Montgomery Co. 610-272-9124.

Used hart layer water cups, with stainless steel barrel \$25 each. 8ft PVC dropping boards, free. York Co. 717-235-6266.

14' chicken slats, roll away chicken nest, hanging feeders, automatic waters. 1867 Kirkwood Pike, Kirkwood PA 17536. Lanc. Co.

Firewood, mixed hardwoods, cut split and seasoned, approx 4 triaxle dump truck loads, \$330 a load. Lebanon Co. 717-838-0427.

AKC adult rottweiler female, good watchdog, 4 mo AKC rottweiler male pup, shots, wormed. Lanc. Co. 717-768-8275.

8x20 truck body walk in cooler with compressor and fan 1973 Dodge truck with 12ft box, runs good. Potter Co. 814-435-1176.

Killbros 350 gravity bin wagon with 11L tires, 8 ton running gear, also Dion all-age wagon parts. Lebanon Co. 717-865-4645.

Big standardbred carriage horse, 4 yr old, gelding, drives good, gentle but not a woman's horse \$1500. Lanc. Co. 717-445-5603.

Handmade braided rugs, assorted sizes \$10 to \$20 each. Lanc. Co. 717-656-0805.

1977 International paystar 5000 tri axle dump truck, big cam III 400 hp Cummins engine, installed in Jan 1995. Bedford Co. 814-523-1221.

Army Jeep 5/4 ton w/winch, good condition, call nites, also b&d 18" radial arm saw, excell cond. Schuylkill Co. 717-467-3540.

Chicken house 55x25 red siding, good sound. Horse hay. Double stainless steel tubs. Lanc. Co. 717-768-8359.

VF4D 4 cylinder Wisconsin engine, \$650. 7hp Honda \$250. Both good condition. Ammon Fisher, 2674 Bachmantown Rd, Ronks, PA 17572. Lanc. Co.

Used gal roofing about 350 pieces, 2' wide by 12' long. Elmer Esh, 2874 B Stumptown Rd, Ronks, PA 17572. Lanc. Co.

Kill Brothers gravity bin model 350 with side extensions, without wagon gear also #95 Gehl grinder mixer. Berks Co. 610-856-7542.

JD two bottom hydraulic plow with round spokes, 34 inch rim for JD or IH, good condition. Bucks Co. 215-766-2106.

Ford 9N \$1500. JD M w/cults \$2000. JD 1939 B nice \$2000. Wanted-MH pony fenders. Bucks Co. 215-598-7546.

JD #332 diesel garden tractor, 186 hrs w/mower, hot drive, pwr str, pwr angle snow blade, easy rake grass & leaf vacuum, 5hp, will sell separately. Del Co. 610-358-5839.

Mobile home, 1972 Creewood 12x65, 2br, central air, oil heat, must be moved \$1500 OBO. Bucks Co. 610-346-8404.

530 John Deere tractor with 227 corn picker in good condition \$5000. York Co. 717-244-8833.

Sun and fun camper, excellent for hunting, come see and make offer. Harford Co. 410-679-5033.

Miniature horse AMHA/AMHR 2 year old bay, gelding, show quality \$900. Call evenings. York Co. 717-456-7232.

76 Ford F600, 30ft flatbed, 361ci, 4x2, solid cab, new master cylinder, booster, battery, exc tires, tagged \$800. Chester Co. 610-932-4019.

7253 Toledo scales, van Norman piston grinder, sun 900 scope motor tester, 1951 Ford panel truck engine. Lanc. Co. 717-687-6976.

Wood stove, large size Ballard brand, takes 30" wood, includes 8" pipe, excellent for home, shop \$250 neg. Lebanon Co. 717-964-3052.

Simplicity model 7790 2 cyl diesel, 48" cut, one bottom plow disc snow blade, hydraulic lift one owner \$1400. York Co. 717-927-8967.

Fox terrier dog, free for good home, male. Aaron Fihser, 2599 Bachmantown Rd, Ronks, PA 17572. Lanc. Co.

JD 12B corn sheller, single axle budd wheel farm wagon, \$25. 1951 Ford F5 dump truck \$150. Ear com. Hunterdon Co. 908-782-1725.

Margin gem range cook bake stove, wood or coal in good condition. 194 Liberty Lane, Kirkwood, PA 17536. John Esh. Lanc. Co.

14 hand sorrel pony rides and drives, can handle carriage, harness also available. Ben Fisher, Colonial Rd. Call between 7-8 pm. Lanc. Co. 717-768-8609.

Standard bred mare, nice manners, gentle and traffic safe, 3yrs old \$975. Lanc. Co. 717-445-4149.

Uebler 820 TMR cart \$1200. Wanted-Weaverline 430 hydro will consider trade. No Sunday calls. Northumberland Co. 717-672-9799.

Steel frames for a 50x70' building, 35 poplar 2x8"x14", 30 pcs fir 2x12"x12", new rough cut yellow pine, 80 pcs 2x10"x12", etc. John King, RD2, Box 64-1, Honey Brooks PA 19344.

Stainless steel 8' double bowl with drainboards sinks, heavy duty, commercial \$285. Stainless steel 8' preparation tables commercial. Schuylkill Co. 717-467-2679.

Blue peafowl peacock chicks, \$15 each. Lady Goudlian finches, nine ft bass chaser pontoon boat exc cond Monroe Co. 717-629-5699.

Miniature donkeys three Lancaster Farming, Saturday, October 7, 1995-B21 month spotted jennet \$1200. Four month gray brown jennet \$1000. Both very tame and friendly. Lanc. Co. 717-355-2074.

Bay standardbred 5yr old 18.1 h, good broke, traffic safe, sound. Timothy Martin, 1231 Woodlyn Dr, Denver PA 17517. Lanc. Co.

Plastic feed bags, \$10 each. New NH 354 feed grinder screens 3/8 and 7/16 \$50 for both. Centre Co. 814-349-8010.

MF 850 combine, 13' flexible floating 1913 small grain head, 1163 six row narrow corn head. Lanc. Co. 717-336-2744.

DS 3 crabs boiler with controls, \$300. Market wagon \$750 OBO. 3ft SS rubber pig feeder \$75. Eli Stoltzfus. Lanc. Co. 717-683-3769.

1987 Ford F250 4x4 V8, auto with power angle plow 56000 miles, clean truck \$7900. Hunterdon Co. 908-735-4673.

Queen Bengal range, blue warming closet, water tank, good condition, \$600. After 5 p.m. Juniata Co. 436-2652.

Go carts 5hp with Briggs and Honda engines, new wheels, brakes, and rebuilt engine, great for kids. York Co. 717-252-0687.

Moritz horse and cattle trailer, bumper hitch, like new \$2800. 93 Olds 88, 7500 miles, like new. Lebanon Co. 717-273-6018.

Surdiac coal stove model 612D \$250 OBO. Also burnies \$3.50 and up. Lanc. Co. 717-354-0988.

VF 180 diesel \$3500. WC AC \$550. 1 ton elec chain hoist \$250. 165 lb anvil \$225. 13.6x38 tire \$150. York Co. 717-927-8323.

Ford 8N runs good, very good shape, with chains \$2800. Topper for swoop back El Camino \$50. York Co. 717-235-2204.

Top beater and pan for NH manure spreader \$50. Cumberland Co. 717-488-4814.

Old round oak kitchen cook stove in working condition, warming shelf, white enamel finish \$300 OBO. Lanc. Co. 717-361-0159.

Madison seed wheat, cleaned and treated, grown from certified seed, \$7.50 bushel. Smoker 24' elevator, good condition \$450. York Co. 717-244-2834.

JD year around tractor cab with steps, mounting brackets, good condition. Lanc. Co. 717-354-7752.

12 corn milk can cooler, stainless steel liner, good condition \$400 OBO. RR 2, Box 221, Mifflintown, PA 17059. Juniata Co.

Oliver 60 JD 5 mower and cultivators, for JD MT cub with snoblade, also want rear wheel hubs for JD MT or 40, 420, 430. Northampton Co. 610-588-7545.

For parts of fix up 1981 Honda Accord. Engine good, trans bad, inspection good till Dec. Lanc. Co. 717-367-3456.

Kemp shredder chipper 5hp good condition \$650. Two 24" dia 130 gal steel fuel tanks, \$75 each. Lanc. Co. 717-354-7883.

Powermatic metal band saw, geared \$950. Powermatic belt-disc sander \$480. Walker Turner lathe variable speed, heavy duty \$650. Dauphin Co. 717-921-3328.

Reg Morgan mare, chestnut, 9 yrs old, rides and drives, man's horse, \$1700. Also pony harness \$125. Bedford Co. 814-766-2325.

Feed bins, calf hutches, calf kennels, wire panels, horse barns, wooden truck bedsides, repaired, also new made to order. Lanc. Co. 717-442-8972.

Sale or trade 9ft out OMC haymaster Model #217, decent shape, need bin wagon for corn harvest. Cumberland Co. 717-258-6770.

1977 Ford F250 4wd pickup, Marlin goose gun, 308 win rifle, 1 1/2 hp motor. Northumberland Co. 717-758-3108.

8x6 1/2 ft overhead door havey, 8x8 overhead, 15000 watt alternator, \$1000. Corn chute for end of elevator. Call after 9 p.m. Berks Co. 610-488-1541.

MF510 diesel combine, 4r corn, 12ft grain, best offer, cheap. Early morning, late evenings. Newmanstown, PA. 610-589-4351.

4 15" GM wheels, air tire scooter, 16" Craftsman chain saw with carrying case, 21" self propelled lawnboy mower. Lanc. Co. 717-665-5848.

Rye seed for sale. Oak triple tree set. JD 716A forage wagon tandem gear with roof. Lanc. Co. 717-665-3865.

Four home raised open heifers ready to breed. Lanc. Co. 717-464-4498.

IH 656 diesel, 3pt tongue questionable \$2850. S tine cultivators, 4r and 6r narrow, 4r wide, NI 323 picker \$950. Berks Co. 610-944-7529.

John Deere B model drill 20x7, excellent condition, new blades \$650. John Deere 12' roller hair, good condition. Kent Co. 410-755-6919.

Farmall H tr with live hyd, new paint, tires fair, metal perfect, exc cond. Farmall M tr tires very good, metal exc, exc cond, ready to go. Franklin Co. 717-264-5137.

Rye seed, small grain, cleaned and bagged \$5.50/bu. Can deliver. Chester Co. 610-269-3442.

C.B. HOOPER & SON, INC.
Intercourse, PA
(717) 768-8231

HOOPER
TWO LOCATIONS

HOOPER EQUIPMENT
Middletown, DE
(302) 378-9555

The Saving Place.



When your tractor's engine has seen better days, you now have an option. See your local authorized engine dealer about installing a 400 Series Premium Basic Engine remanufactured specifically for:

Case IH Equipment

John Deere* Equipment

The remanufactured Basic Engine consists of a Long Block plus:

- Oil Pump
- Oil Cooler
- Water Pump
- Front Cover
- Oil Pan
- Much More!

Each engine is remanufactured to exceed the quality standards needed by today's agri-businessman and is backed by a one year/parts & labor warranty. So ask your local authorized dealer about the 400 Series Premium Basic Engine. It may be your best overhaul option.



Dealer Inquiries Welcome

Kids will love making tracks in

WEATHER STARS™
By Tingley

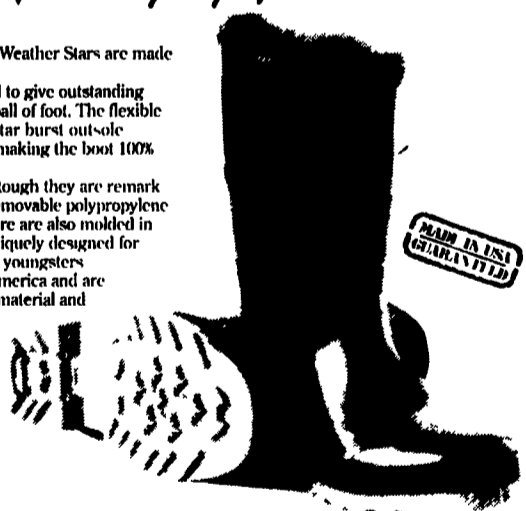
Play time or classroom time Weather Stars are made for all day wearing comfort.

They are especially designed to give outstanding fit in the heel, instep, vamp and ball of foot. The flexible upper and tough slip resistant star burst out-sole are permanently fused together making the boot 100% waterproof.

Although Weather Stars are tough they are remarkably light in weight and have a removable polypropylene innersole for added comfort. There are also molded in pulls and heel spurs that were uniquely designed for easy on and off for tots as well as youngsters.

Weather Stars are made in America and are guaranteed against all defects of material and workmanship.

When comparing comfort, wear, price and workmanship you will see why Weather Stars are such a great value. And making better products is why Tingley has been around since 1896.



What makes Webdri a comfortable heavy duty rain suit, and not a sweat suit, is its unique construction.

Our Webdri suit is not only designed for toughness but for comfort as well. Its heavy coated fabric uses a unique seam up to tough tear and pull tests. And its resistance to oils, grease, acids and many other chemicals is excellent.

The unique construction allows the lining to absorb and dissipate moisture on the inside of the suit.

Retracting sleeves give maximum arm freedom and Therm-O-Rad seams are 100% waterproof.

The original Webdri is our most durable and most comfortable suit, which is why it is our most popular one too.

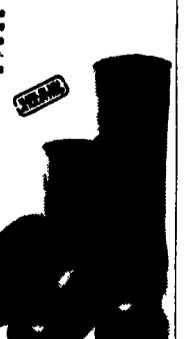


Generations of American workers have depended on three members of our family for work.

Our 18-Top, 10" Boot and Knee Best have become the workhorses of America. In agriculture, men and women have been wearing our rubber overboots than anyone else's.

Our rubber overboots have an amazingly lightweight upper and a thick sole and tread. They weigh only a few ounces and are used for their toughness and long wear.

Our rubber compound will not crack or stiffen even in the coldest weather. Its PVC overboots and Tingley USA made stretch rubber overboots are the finest in the world.



TINGLEY

TINGLEY

HUBER'S ANIMAL HEALTH SUPPLIES

810 Tulpehocken Rd., Myerstown, PA 717-866-2246

Mon., Thurs. & Fri. 7:30 a.m. to 6 p.m.;

Tues. & Wed. 7:30 a.m. to 5 p.m.;

Sat. 7:30 a.m. to Noon