

Greencastle Livestock

Greencastle, Pa.
Report Supplied by Auction
October 2, 1995

SLAUGHTER CATTLE RECEIPTS: 449 HEAD. SLAUGHTER STEERS 101 HD., TREND STEADY ON CHOICE AND PRIME; 2.00 LOWER ON SELECT. HIGH CHOICE AND PRIME 2-4 64.00-66.00; CHOICE 2-3 950-1075 LBS. 58.00-62.00; CHOICE 2-3 1075-1375 LBS. 59.00-63.50; CHOICE 2-3 OVER 1375 LBS. 57.00-61.50; CHOICE 4 ALL WEIGHTS 54.00-59.50; SELECT & CHOICE 1-2 950-1100 LBS. 54.00-60.00; SELECT AND CHOICE 1-2 1100 TO 1375 LBS. 50.00-60.00; SELECT & CHOICE 1-2, OVER 1375 LBS. 46.00-54.00.

HOLSTEINS: CHOICE 2-3 1050-1450 LBS. 52.00-56.00; SELECT 1-2 1050-1450 LBS. 45.00-51.00.

SLAUGHTER HEIFERS: 26 HEAD, TREND STEADY TO WEAKER. CHOICE 2-3 850-1000 LBS. 56.00-60.50; CHOICE 2-3 1000-1250 LBS. 58.00-63.50; CHOICE 4, ALL WEIGHTS 55.00-60.00; SELECT AND CHOICE 1-2 850-1000 LBS. 50.00-57.00; SELECT AND CHOICE 1-2 1000-1250 LBS. 47.00-55.00.

HOLSTEINS: CHOICE 2-3 1000-1350 LBS. 44.00-51.00; SELECT & CHOICE 1-2 1000-1350 LBS. 38.00-43.00.

SLAUGHTER BULLS: 35 HEAD, TREND 3.00 LOWER YIELD GRADE 1, ALL WEIGHTS 42.00-51.00; YIELD GRADE 2, ALL WEIGHTS 30.00-41.00.

BULLOCKS: 8 HD. CHOICE 1-3 950-1150 LBS., NONE; CHOICE 1-3 1150-1375 LBS. 45.00-52.00; SELECT 1-2 950 TO 1250 LBS. 54.00-58.00.

COWS: 280 HEAD, TREND 2.00 LOWER. BREAKING UTILITY & COMMERCIAL 30.00-35.50; CUTTER & BONING UTILITY 27.00-34.50; CANNER & LOW CUTTER 27.00 AND DOWN.

STOCKER & FEEDER CATTLE RECEIPTS: 94 HEAD, WEAKER TREND, LITTLE DEMAND. BEEF TYPES 200-400 LB. STEERS 45.00-62.00, BULLS 45.00-58.00, HEIFERS 40.00-55.00; 400-600 LB. STEERS 48.00-59.00, BULLS 40.00-60.00, HEIFERS 40.00-57.50; 600-800 LBS. HEIFERS 46.00-58.00, BULLS 40.00-50.00, HEIFERS 40.00-52.00; 800-975 LB. STEERS 45.00-54.00, HEIFERS 37.00-46.00, HEIFERS 37.00-49.00.

HOLSTEINS AND DAIRY CROSS: 200-400 LB. STEERS 40.00-53.00,

BULLS 40.00-49.00, HEIFERS, NONE; 400-600 LB. STEERS 40.00-44.00, BULLS 37.00-44.00, HEIFERS, NONE; 600-800 LB. STEERS 35.00-43.00, BULLS 32.00-38.00, HEIFERS, NONE; 800-975 LB. STEERS 33.00-40.00, BULLS 30.00-36.00, HEIFERS, NONE.

CALVES: 533 HEAD, TREND WEAKER. CHOICE 150-300 LBS. 50.00-70.00; GOOD 150-300 LBS. 45.00-60.00; GOOD, 100-150 LBS. 40.00-50.00; GOOD 80-100 LBS. 35.00-45.00; STANDARD 80-100 LBS. 30.00-40.00; STANDARD, 80 LBS. AND DOWN, 30.00 AND DOWN.

CALVES RETURNING TO THE FARM: STEADY TREND. HOLSTEIN BULLS OVER 100 LBS., UP TO 102.50; UNDER 100 LBS., UP TO 100.00; HOLSTEIN HEIFERS, OVER 100 LBS., UP TO 190.00, UNDER 100 LBS., UP TO 175.00; BEEF TYPE BULLS, OVER 90 LBS., UP TO 87.50; BEEF TYPE HEIFERS, OVER 90 LBS. UP TO 70.00.

SHEEP AND LAMBS: 64 HEAD, TREND STEADY. CHOICE 80-100 LBS. 70.00-78.00, 100-120 LBS. 65.00-74.00, MEDIUM AND GOOD ALL WEIGHTS 68.00-79.00; FEEDER LAMBS, 60-85 LBS. 72.00-76.00; LIGHT LAMBS 80.00-92.00.

SHEEP: EWES LEAN 30.00-37.00, FAT 20.00-22.50; BUCKS 17.00-22.50.

GOATS: 215 HEAD. SMALL 18.00-40.00; MEDIUM 40.00-61.00; LARGE 60.00-105.00.

HOGS, SOWS & BOARS: 131 HEAD, TREND 1.00 LOWER. HOGS, BARROWS & GILTS: 210-250 LBS. 45.00-46.50; 250-260 LBS. 44.50-46.00; 260-270 LBS. 43.00-45.00; 270-300 LBS. 40.00-41.50.

LIGHT HOGS: 140-180 LBS. 23.00-32.00; 180-210 LBS. 31.00-40.50.

SOWS: STEADY TREND. GOOD SOWS UNDER 400 LBS. 33.00-39.00; GOOD SOWS OVER 400 LBS. 34.00-41.50; CULL SOWS, ALL WEIGHTS 32.00 AND DOWN.

BOARS: STEADY. 180-210 LBS. 28.00-30.00; 210-260 LBS. 27.00-31.00; 260-300 LBS. 27.00-29.00; 300 LBS. AND OVER 25.00-28.00.

SALE EVERY MONDAY AT 2:00 P.M. & EVERY THURSDAY AT 1:00 P.M.

HAY & STRAW SALE EVERY MONDAY & THURSDAY AT 11:30 A.M.

SPECIAL FEEDER CATTLE SALE FRIDAY, OCT. 6, 7:15 P.M.

Eighty-Four Livestock

Eighty-Four, Pa.
Monday, October 2, 1995
Report Supplied by Auction
CATTLE: 306... (PDA)... COMPARED WITH LAST MONDAY'S SALE... COWS STEADY TO 4.00 LOWER; BULLS STEADY.

STEERS: FEW SELECT 48.50-52.00; STANDARD 35.00-45.50.

HEIFERS: SELECT 34.50-41.00, FEW STANDARD 32.50-35.00.

COWS: BREAKING UTILITY AND COMMERCIAL 32.00-34.50, ONE AT 41.00; CUTTER AND BONING UTILITY 29.50-31.50; CANNER AND LOW CUTTER 24.00-28.00; SHELLS DOWN TO 15.00.

BULLS: YG#1 1300-1800 LBS. 43.00-44.50, #2 1100-2200 LBS. 32.00-41.00.

FEEDER CATTLE: STEERS MEDIUM AND LARGE FRAME #1 315-550 LBS. 53.00-63.00, ONE 67.00; LARGE FRAME #2 300-800 LBS. 35.00-50.00; HEIFERS MEDIUM FRAME #1 350-750 LBS. 49.00-58.00; MEDIUM AND LARGE FRAME #2 325-650 LBS. 35.00-47.50; BULLS MEDIUM AND LARGE FRAME #1

350-600 LBS. 52.50-60.00; MEDIUM AND LARGE FRAME #2 325-800 LBS. 35.00-48.00.

CALVES: 190... VEALERS CHOICE 130-250 LBS. 62.50-86.00, GOOD 125-300 LBS. 35.00-57.50, STANDARD AND GOOD 70-100 LBS. 26.00-39.00, UTILITY 60-90 LBS. 15.00-25.00.

FARM CALVES: #1 HOLSTEIN BULLS 90-115 LBS. 70.00-92.50, #2 85-110 LBS. 38.00-60.00; FEW #1 HOLSTEIN HEIFERS 85-105 LBS. 120.00-182.50, #2 90-110 LBS. 95.00-110.00; BEEF X BULLS AND HEIFERS 70-120 LBS. 45.00-82.50.

HOGS: 65... BARROWS AND GILTS US#1-3 210-230 LBS. 44.50-47.00, 240-270 LBS. 44.50-48.25; US#2-3 345-380 LBS. 41.00-45.00.

SOWS: FEW US#1-3 500-700 LBS. 34.50-35.50.

BOARS: 325-435 LBS. 29.75-30.25.

FEEDER PIGS: 45... US#1&3 20-35 LBS. 10.00-20.00 PER HEAD, 50-80 LBS. 25.00-40.00.

SHEEP: 104... SLAUGHTER LAMBS CHOICE 80-115 LBS. 70.00-85.00, ONE 94.00; 60-75 LBS. 69.00-78.00; GOOD AND CHOICE 85-105 LBS. 45.00-63.50; SLAUGHTER SHEEP 20.00-31.50.

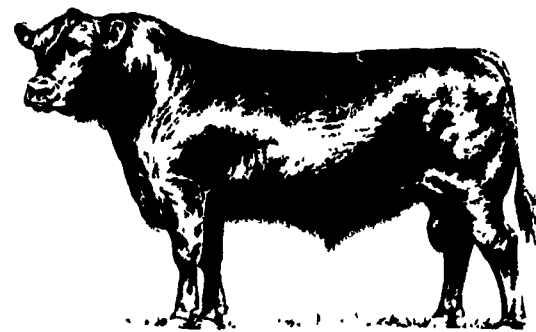
GOATS: 10... ONE LARGE AT 50.00

PER CWT.; MEDIUM 31.00-40.00; SMALL 22.00-27.00; TWO SMALL KIDS AT 11.00 PER HEAD.

North Jersey Livestock

Hackettstown, NJ
Report Supplied by Auction
Tuesday, October 3, 1995
Report supplied by auction

CALVES 25-1.77% .
COWS .15% -.37% .
EASY COWS .10-.31.
FEEDERS 300-600 LBS. .17-.60.
HEIFERS .17% -.44% .
BULLS .29% -.53% .
STEERS .23% -.57% .
HOGS 20-44.
ROASTING PIGS EACH 15.00-32.00.
BOARS .05-.24.
SOWS, NONE.
SHEEP: .13-.50.
LAMBS EACH 9.00-87.00.
LAMBS PER LB. .36-1.03.
GOATS EACH 13.00-104.00.
KIDS EACH 5.00-78.00.
TOTAL: 990 HEAD.



NEW Swine Receiving Station Opening November 1

Walter M. Dunlap & Sons Inc.
Lancaster, Pa
Announce A New Marketing Service For Pennsylvania Pork Producers.

Beginning November 1, 1995, Walter M. Dunlap & Sons Inc. will be operating a Lancaster Stockyards swine receiving station every Wednesday (except during the week of Thanksgiving) so that swine producers have a new swine marketing opportunity. Producers, therefore, can market animals on Mondays through the Auction or Wednesdays through the receiving station. Marlin Becker, having served as White Oak Mills' hog dispatcher and marketing agent for 12 years, will be joining Walter M. Dunlap & Sons Inc. as manager of their hog division effective October 16, 1995 to oversee this new Lancaster Stockyards receiving station. A life-long Lancaster County resident, Marlin has over 14 years of experience as a swine producer, fieldman and marketing agent.

Should you have any suggestions regarding how to better service your need, please contact Marlin at (717) 397-5136.

5 SERVICE AGE BOARS

Validated Certified Herd

For Value Information on cut out performance

Contact Keith Loy
717-345-8035

Boars will be sold Oct. 9 1:30 P.M.
Monday before goat and sheep sale.

NEW HOLLAND SALES STABLES, INC.



Diffenbach Auction Inc.

100 West Jackson Street • New Holland, Pennsylvania 17557
Office: (717) 355-7253 • FAX: (717) 355-9547

HAY & GRAIN SALE EVERY MONDAY - 10:00 A.M.

FRI.	OCT. 13	FARM EQUIP., TRACTORS & FARM SUPPLIES	9:00 AM
WED.	NOV. 1	WINROSS TRUCKS & TOYS	6:30 PM
FRI.	NOV. 10	FARM EQUIP., TRACTORS & FARM SUPPLIES	9:00 AM
TUE.	NOV. 21	QUILT, CRAFT & BUGGIES	9:00 AM
WED.	NOV. 22	QUILT & CRAFT	9:00 AM

EQUIPPED FOR AN AUCTION AT YOUR PLACE OR OURS

ALAN DIFFENBACH AUCT. - AU2258-L

Increase Your Income From Milk Sales

We are looking to increase our high quality milk supply in Chester, Berks and Lancaster Counties.



- No Coop Dues
- Quality Premiums
- Solids Non Fat Premiums
- Lower Hauling Rates & Stop Charges

From a proud neighborhood dairy in the 1920's to a modern manufacturing company of the 1990's, the Dietrich family-owned business continues to move forward. With the dedication of three generations and a heritage rich in experience and innovation, Dietrich's Milk Products faces the future with confidence. Give us a call and see what we are all about.

Dietrich's Milk Products, Inc.

100 McKinley Avenue
Reading, PA

Field Representative
Daniel Vosburg • New Holland, PA
(717) 354-5562

NEW HOLLAND SALES STABLES INC. THE ACTION AUCTION

Livestock Is Our Only Business

MONDAY



**SLAUGHTER HOGS
EARLY BIRD HOG SALE
7:30 A.M.**

Sell Your Hogs At New Holland Sales Stables, Inc. See them weighed, sold and pickup your check.



**10:00 A.M.
HORSES
MULES**



**1:30 P.M.
BEEF SALE
2:30 P.M.
SHEEP, GOATS &
CALVES**



WEDNESDAY

**HEIFER SALE 11:00 A.M.
COW SALE 12:00 NOON**



We have the usual run of 50 to 100 Heifers, all ages. Loads of fresh cows and springers from our regular shippers. Also some local fresh cows and springers.

THURSDAY

Beef Auction 10:00 A.M.



**BULLS, STEERS,
BEEF COWS**



**1:00 P.M.
STOCKERS &
FEEDERS**



**11:00 A.M.
GOATS
SHEEP
CALVES**



**1:30 P.M.
FEEDER PIG SALE**



Pigs are accepted after 6:30 A.M. State graded from 8 to 12 Dairy Barn and Feeder Pig Barn are cleaned and disinfected weekly for your protection

NEW HOLLAND SALES STABLES, INC.

12 Miles East of Lancaster Off Route 23, New Holland, Penna.

MANAGERS

Norman & David Kolb - 717-397-5538
Field Representatives
Luke Eberly - 215-267-6608 738-1665
Homer Eberly - 215-267-3047
Ron Ranck - 717-656-9849

Sale Barn Officer Manager
Roger Floyd - 717-354-4341
FAX #717-355-0706

Order Barn:
Paul Good - 215-445-6662