

# Bloomsburg Fair

(Continued from Page A1)

calf shown by Amanda Singer, Mashoppen; Brown Swiss-CIE Warwick Farms Emory 105, 4-year-old shown by Trudy Swendsen, Honesdale; Guernsey-Greenwood M Patsy, senior 2-year-old, shown by Greg Hemsarh, Millville; Jersey-Four Springs Juno Miss Julie, senior 2-year-old shown by J. Craig and Susan Wicker, Centre Hall; and Milking Shorthorn-Whites Ridge-way Billie Sue, junior 2-year-old shown by Melissa Wolfe, Riverside.

In the 4-H Dairy, Show judged by Kress Simpson of Mansfield, the grand champion female exhibitors were Ayrshire-Roberta Fogelman, Muncy; Brown Swiss-Alicia Wolfe, Riverside; Guernsey-Greg Hemsarh, Mill-

ville; Holstein-Angela Stackhouse, Muncy; Jersey-Amanda Alpaugh, Turbotville; and Milking Shorthorn-Melissa Wolfe, Riverside. Showmanship award winners were Kevin Hock, Millville, senior; Angela Stackhouse, Intermediate; and Alicia Wolfe, junior.

### Dairy Goat Show

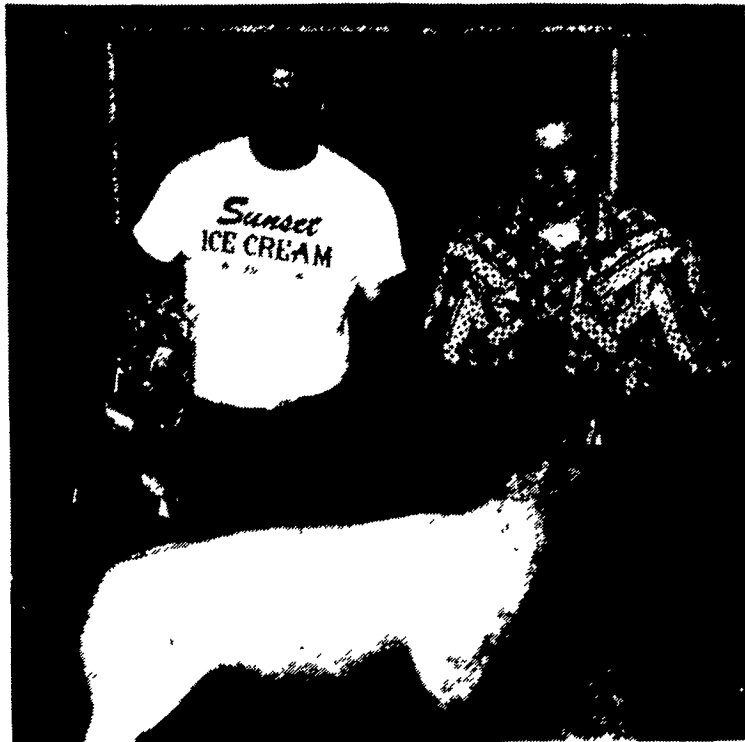
Supreme champion and winner of the Nubian challenge class was GCH Starfire's WFBC Angella, exhibited by Helen Snyder of Newport. Other best of breed winners included Alpine-The LH Valley View Clair, Jenni Puff, Centre Hall; La Mancha challenge class CH 40-Crossing D-W Sierra, Leah Kyle, Alexandria; Saanen-40-Crossing Lily's Dandelion, Danny Trimer, Alexandria; Toggenburg-40-Crossing



From left, in the open Holstein Show reserve champion was Jan Jurbala's aged cow, Celebrity Count Stefoni, shown with show judge Dale Oliver, Grand Champion Rosalynn's Coal Rose shown by Paul Ritter, and SUN Area Dairy Princess Becky Dugan.



Representing Hoss's Steak and Seafood House of Shamokin Dam, Len Hummel purchased the grand champion market steer from Jason Wolfe of Lewisburg.



On behalf of Sunset Ice Cream of Williamsport, John Fritz bought the grand champion market lamb from David Smith, Williamsport.

Strawberry's Curley, Nancy Trimer, Alexandria; and Recorded Grade-Dancer's Ridge-MB Chantilly, Lennie Rae Vangorder, Centre Hall.

### 4-H Livestock Sale

The 4-H Livestock Sale grossed \$22,762 in proceeds for 37 4-H'ers with animal projects.

Jason Wolfe of Lewisburg sold his champion market steer to Hoss's of Shamokin Dam for \$1.45 per pound. The reserve

champion steer owned by Angela Lovell of Linden was sold to Joe Harvey of Bloomsburg for \$.85 a pound.

The champion lamb was sold to Sunset Ice Cream of Williamsport for \$1.55 a pound by David Smith, also from Williamsport. The reserve champion lamb owned by Matt Porter of Elysburg was sold to Mainville Ag Services of Bloomsburg for \$2.80 a pound.

Jessi McCarty of Catawissa

sold her champion market hog to Hatfield Quality Meats of Hatfield for \$2.30 a pound. The reserve champion hog owned by Angela Lovell was sold to Northeast Farm Credit Services of Lewisburg for \$1.025 a pound.

The sale averages were as follows: 12 steers with champions \$.79 a pound and without champions \$.71 per pound; 40 lambs with champions \$1.20 per pound and without champions \$1.14 a pound; and 31 hogs with champions \$.93 a pound and without champions \$.87 per pound.

Hi-Tensile Fence Supplies Intensive Grazing Fence Supplies  
HOTLINE - PARMACK - PEL FENCERS SALES & SERVICE



- Tools • Farm Supplies
- Housewares • Stanley Bostitch Nailers • Werner Ladders • Gent-L-Keen Hand Products

### JR'S HARDWARE

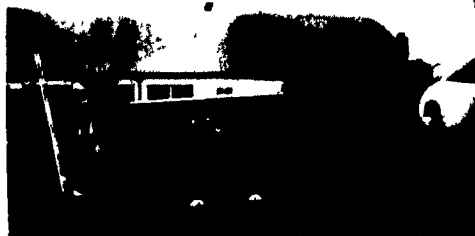
515 Coopers Dr., Kirkwood, PA 17536  
(Same Location as Stauffer Pump Works)

#### Hours:

Mon., Wed., Thurs. 6:30-5:00  
Tues. & Fri. 6:30-7:00  
Sat 6:30-4:00

WE SHIP UPS

### SOYBEAN ROASTING ON YOUR FARM



PUT "VALUE" IN YOUR GRAIN AND NEVER LEAVE THE FARM

#### Economic Value:

- We Roast Your Beans
- Avoid Trucking Expenses
- Avoid Docking

#### Nutritional Value:

- Increased Palatability
- Uniform Golden Appearance
- Cooling for Immediate Storage Available

ONLY WE CAN GIVE YOU "FLAME-KISSED" QUALITY



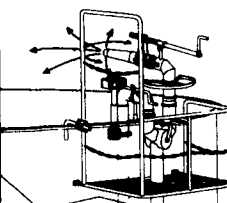
**Horst Grain Roasting**  
3040 Penns Grove Rd.  
Lincoln University, PA  
New Oxford, PA (215) 869-8834

**David N. Groff**  
RD 3, Lewisburg, PA  
(717) 568-1420



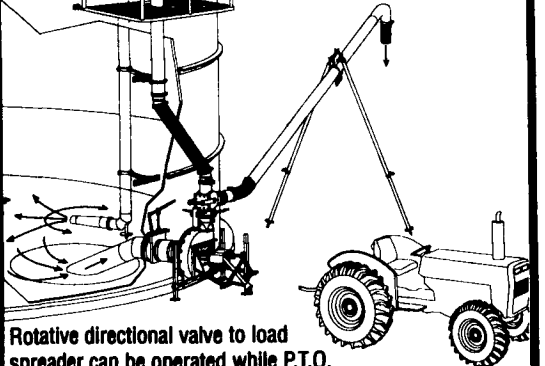
### MAXI-PUMP SIDE-MOUNT

WITH TOP AND BOTTOM AGITATION NOZZLES FOR MAXIMUM EFFICIENCY



28" high pressure pump for better nozzle reach.

Rotative selector valve for top or bottom agitation designed to be operated safely at full agitation speed.



Rotative directional valve to load spreader can be operated while P.T.O. is at low R.P.M.: No need to shut off the P.T.O.

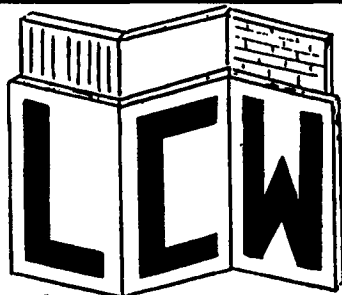


If you are installing an above ground tank of concrete or steel, you need to consider a Houle Maxi-Pump. It's combination of affordability and performance make it the "maximum" pump! Call today for a quote!

### MID-ATLANTIC AGRISYSTEMS

Liquid Waste Specialists  
Oxford, PA

**800-222-2948**



### LANCO CONCRETE WALLS

Agricultural • Commercial • Residential

WE DO SCS WORK - ALL TYPES OF POURED WALLS

- Retaining Walls
- Manure Pits (circular or rectangular)
- Footers
- Bunker Silos
- Slatted Floor Deep Pits
- Flatwork

CONTACT: STEVE PETERSHEIM, JR.

P.O. Box 256, Bird-in-Hand, PA 17505  
717-291-4585 • (FAX) 717-291-4686