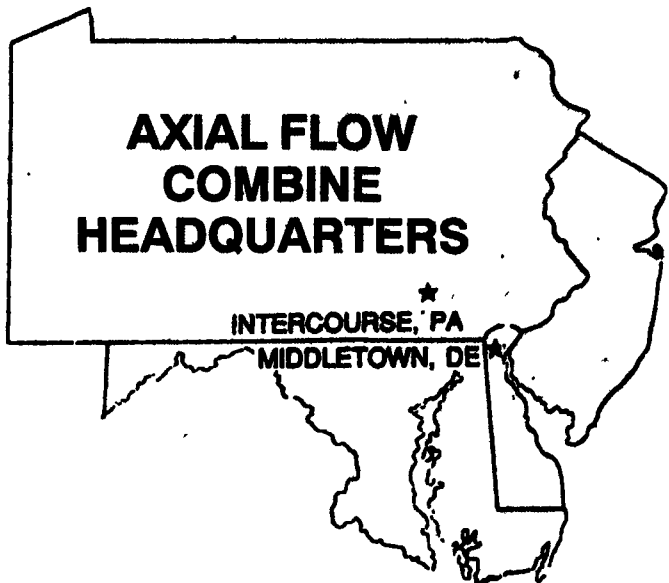


# Best Buys in Used Equipment



## HOOBER HAS RECONDITIONED COMBINES READY TO HARVEST YOUR CROP NOW!

**No Interest until July 1, 1996 (Graom)  
October 1, 1996 (Corn)**

**OR**

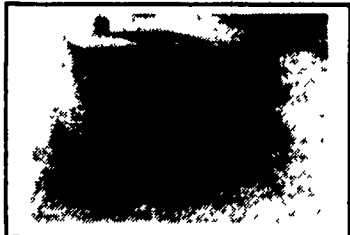
**6.9% Variable Rate for 60 Months**

# FALL COMBINE SALE

**1680**



CIH 1680 Combine, 1987 Yr., 1891 Hrs., Feeder Reverser, Hyd. Reel For/Aft, AHHC, Feeder Cut Off, Monitor, Chaff Spreader, Radio, Heat/AC (U9833)



CIH 1680 Combine, 1981 Yr., 1894 Hrs., Specialty Rotor, Rock Trap, Feeder Rev Monitor, AHC, Reel To Ground, Fore/Aft, 2 Speed Hydro, 4 WD (U9817)

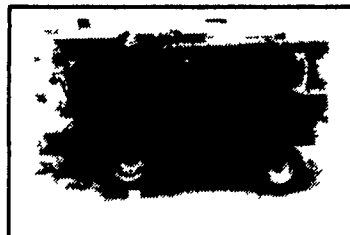


CIH 1680 Combine, 1987 Yr., 4700 Hrs., 30.5x32 Tires Ft., 15.4x16.1 Tires RR, Feeder Rev, Monitor, AHC, Reel To Gr, Hyd For/Aft, AM/FM (U9890)

**1660**

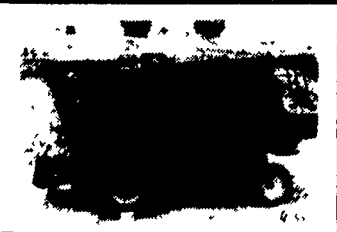


CIH 1660 Combine, 1988 Yr., 2440 Hrs., Feeder Rev Monitor, AHC, Feeder Cut Off, Reel to Ground Sp Specialty Rotor, Hyd Reel For/AFT 3 Pd Cyl (U8741)

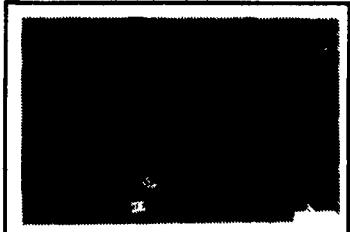


CIH 1660 Combine, 1990 Yr., 1 900 Hrs., 30.5x32, Specialty Rotor, Rock Trap, Feeder Rev, Monitor, AHC, Feeder Cutoff, Hyd Reel For/Aft, 3rd Cyl 172" Unloading Auger, AM/FM (U9417)

**1620**



CIH 1620 Combine, 1988 Yr., 945 Hrs., 28Lx26 Tires, Rock Trap, Feeder Rev, AHC, Feeder Cutoff, Reel To Gr, AM/FM (U8440)



CIH 1620 Combine, 1986 Yr., 1800 Hrs., 23.1x26 Tires, Feeder Reverse, AHHC, Feeder Cut Off, Reel To Ground, Hyd Reel FOR/AFT, AM/FM Radio, New Engine (U8983)

**1440**



IH 1440 Combine, 1979 Yr (U8712)



IH 1440 Combine, 1979 Yr., 5875 Hrs., 28Lx26 Tires FT, 18.4x16.1 Tires RR, AHC, AM/FM (U9518)

**1480**



IH 1480 Combine, 1983 Yr., 3270 hrs, Monitor, Auto Header Control, 3rd Cylinder, Staw Chopper, AM-FM Cassette Radio (4847D)

**1460**



IH 1460 Combine, 1979 Yr 7036 Hrs Specialty Rotor AHHC Feeder Cut Off AM/FM Radio (U9038)

**OTHERS**



MF 550 Combine, 4R Wide Cornhead, 13' Platform (U9184)



JD 7720 Combine, 1980 Yr., 2278 Hrs, w/218 PF, 643 CH (U8995)



Gleaner M Combine, 1975 Yr., Approx 4000 Hrs w/ 435 Corn Head, 15' Flex DF, Good Condition, Price \$10,000 (U9425)

### USED COMBINES

CIH 1688 Combine, 1993, 1011 Hrs., 30.5x32 Tires, 3rd Cyl., 2 Spd. Hydro, Feeder-Rev., Spec. Rotor, Hyd. Reel Fore & Aft, Feeder Cutoff, Chopper, Monitor, Rock Trap, Reel to Ground, AHHC (U9924)

IH 815 Combine, 1519.9 Hrs w/13' Platform, Hydro, 23.1x26 Tires (U9895)

IH 915 Combine, 1977, 1680 Hrs., 28Lx26 Tirs, AH C, AC/Heat (U9760)

IH 1440 Combine, Mechanics Special, As Is (U9141)

IH 915 Combine, Hydro, 1976 (U7477)

JD 6600 Combine, 1977, 3041 Hrs., Sidehill, 23.1x26 Tires (U8764)

MF 510 Combine, 1969, Diesel Eng., w/4RN (U9126)

### JUST TRADED/COMING IN

- CIH 1660 Combine (U9879)
- IH 715 Combine (U9926)
- IH 1440 Combine (U9712)
- IH 1440 Combine (U9942)
- JD 6600 Combine (U9922)
- JD 6620 Combine (U9867)
- JD 7720 Combine (U9841)
- JD 9500 Combine (U9804)
- MF 510 Combine (U9898)
- MF 550 Combine (U9835)
- AC F2 Combine (U9916)
- AC M3 Combine (U9914)

All New & Used Products  
Backed By  
Hooper Parts & Service  
**(717)768-8231**

**HOOBER**  
C. B. HOOBER & SON INC.  
INTERCOURSE, PA

**CASE III**