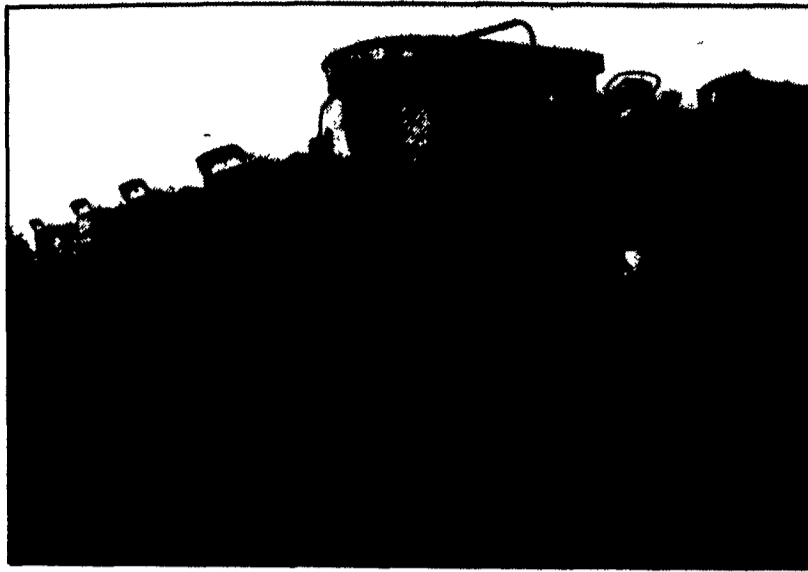


CASE IH Axial Flow Combines - PRODUCTIVITY NEVER THOUGHT POSSIBLE!

The 2100 Series Axial Flow Combines are simply designed to harvest crops in record-setting time. Who would have ever believed that results like these would ever be possible?



- Harvest 805 Acres of corn and 52 Acres of Soybeans in 100 Hours.
- Harvest 13.3 Acres of Corn that Averaged 160 Bushels per Acre in One Hour.
- All with very little field loss.

You can accomplish similar results when you purchase a new 2100 series combine from Hoobers - the people who know how to get maximum productivity from your combine...

Demand for 2100 Series has led to many late Model Trades - both Axial Flow and John Deere. If you can not afford a new combine, check out our great selection of pre-owned machines. We have a machine to fit your operation and budget.



INTERCOURSE
(717) 768-8231
MIDDLETOWN, DE
(302) 378-9555

HOOPER

C.B. HOOPER & SON INC
TWO LOCATIONS

All New & Used Products
Backed By
Hooper Parts & Service
Authorized UPS Station

© 1995 CASE CORPORATION
Case IH is a registered trademark of Case Corporation



QUALITY USED EQUIPMENT IN STOCK

USED TRACTORS

- IH 5488 Tractor, 1982 Yr., 20.8x38 w/Duals, 5340 Hrs w/Rebuilt Eng. (W9229)
- IH 1086 Tractor, 1976 Yr., 20 8 38 w/Duals, 2 Hyd Valves, 540/1000 PTO, AC, Heat, Radio (W9190)
- IH 1086 Tractor, 1980, w/Recon. Engine (W9801)
- IH 1566, 1976, 6113 Hrs., 20 8x38 Tires, 2 Hyd Valves, 3 pt. (W9321)
- IH 1026 Hydro, 1970, Cab, 20 8x38 Tires, 1 Set of Rear Wts (W9679)
- IH 1206 Tractor, 18 4x38 Tires, 10 Front Wts, 1 Set of Rear Wts (W9472)
- IH 1566 Tractor, 1976 Yr., 1000 PTO, 3 Pt Hitch, 20 8x38, ROPS (W9045)
- Case 1370 Tractor (8947)
- Hesston 60-66 2WD, WFE, 540 PTO, 3 Cyl., 16 9x30 Rear Tires, Canopy (W8350)
- IH 1566 Tractor, 1976 Yr., "As Is" Condition (W9206)
- IH 1566, 6000 Hrs., Diesel, 2 WD, Cab (W8757)
- IH 986 Tractor, 3800 Hrs, 18 4x38 Rear, 3 Sets of Rear Wts (W9335)
- IH 826 Hydro Tractor (JB/MGF)
- CIH 885 Tractor, 1987, 2631 Hrs., Cab w/ AC, w/2255 Loader, 18 4x30 Rear Tires, 2 Hyd Valves, Top Link (W9807)
- CIH 5240 MFD Tractor, 1993, 831 Hrs., 18 4x38 & 14 9x24 Tires, 3 Pt Hitch (W9883)
- CIH 7110 2WD Tractor, 1990, 1552 Hrs., 18.4x42 Tires, 3 Valves, 3 Pt Hitch, AM/FM Radio, 18 Wts, Exc Cond (W9739)
- CIH 7120 MFD Tractor, 1991, 1260 Hrs., 18 4x42 Tires, 4 Valves, 3 pt Hitch, 18 Wts, AM/FM Radio, Warr to 5/96 (W9742)
- CIH 7140 MFD Tractor, 1991, 1025 Hrs., 18 4x42 Duals, 3 Valves, 18 Wts, AM/FM Radio, Warr to 5/96 (W9740)
- CIH 7250 MFD, 1994, 88 5 Hrs., "Mark 50" Edition, 20 8x42 Duals, Heat/AC, Radio (W9699)
- IH 1586, 3300 Hrs., 20 8x38 Duals, Cab w/AC & Heat (W9334)
- AC 714D, 1982, 900 Hrs., Loader w/Bucket (W9404)

- IH 1486, 3815 Hrs., Cab, Diesel, 10 Front Wts., 20.8x38 Rears (W9626)
- IH F706D, 1964, Front Wt. Brkt., 18.4x38 Rears, 2 Hyd. Valves (W9648)
- Ford 9600 2WD Tractor, 3547.4 Hrs., 11 Frnt. Wts., 11.00x16 & 18.4x38 Tires (W9811)

USED HAY & FORAGE

- IH 600 Blower (U8214)
- IH 1490 Mower Conditioner, 12', Hydro-Swing, Tior Rolls (U9857)
- IH 1490 Mower Conditioner (U9757)
- CIH 8830 Windrower w/12' Auger Header
- NH 499 Haybine, 12' Cut, Hydro Swing, 3" Knife w/Guards (U7899)
- JD 1508 Batwing 15' Cut Mower (V8509)
- JD 336 Baler (U9859)
- NH 565 Baler (U9540)
- Vicon KM321-10.5' Disc Mower Conditioner (U9731)
- Krone Neimeyer KR130 Round Baler, Mesh Wrap Attach., 4'x4' Bale (UM9636)
- Hesston 4600 Baler (U8893)
- Hesston 4800 Big Baler (U9553)

USED FIELD CULTIVATORS

- Krause 4133 Field Cult., K-tines (T6863)
- White Field Cultivator (T8614)
- IH 45-12.5' Vibra-Shank Field Cultivator (T9600)

USED MISC.

- 10' Dozer Sub-Frame for Steiger Tractor (V9581)
- DMI Crumbler, 18 Ft. (8375)
- Krause Fertilizer Caddy (V9077)
- Ag-Chem 250 Gallon Saddle Tanks (V7789)
- FMC/Bean 600 Gallon Trailer Sprayer (V9288)
- Bush Hog 20' Batwing Mower w/Laminated Tires (V9289)
- IH 1350 Grinder Mixer (V9452)

USED DISCS

- CIH 475 Disk, 18', Rockflex, 7.5 Spacing, 9.5L 14 Duals, Blades, FT-18" RR-19" (T9713)
- IH 470 Disc 12' Cut, 19" Blades, Scrapers, Hyd. Cyl & Hose (T9338)
- IH 496-18' Disk, Rockflex, 21" Notched Blades, Duals, 9" Spacing (T9813)

- Krause 4912 Disc, Cut Width 18'7", Rigid Bearing Arms, 21" Blades (T9138)
- Krause 4927 Disc, 25' Rockflex, Good Blades (T9456)
- JD BWA Disc 12' Cut, 17" Blades (T9578)
- JD 235 Disc, 20' Cut, Single Fold, New Blades (T8709)
- Krause 1577 Disc, 18" Blades, 9" Spacing, Rockflex (T9557)
- Krause 2413 Disc 23' Cut, New Blades (T8292)
- Krause 4926 Disc, Rockflex w/Scrapers, 9" Spacing (T7653)
- Krause 1927 Rockflex Disc 25' Cut Width 22" New Blades (T8222)
- Krause 4927 Disc (T9598)
- IH 510 Disk, 16'K 22" Blades, 10" Spacing (T7542)
- Krause 2442 Disc (T9079)
- JD BWA 18' Disc, Duals, Blades, Front-18" Rear-19", Hyd. Lift (T9547)
- Krause 2416 Disc (T5858)
- Sunflower 1232 Disk, 24' w/Trailing Hitch (T9730)

USED PLANTERS & DRILLS

- IH 5100 21x7 Drill, 7" Spacing, w/Fert. (V9748)
- Great Plains 24' Conv. Drill, w/4x12 Press Wheels (V9719)
- IH 510 Drill 16x7 (V9812)
- NI planter 11 Row Corn/Bean w/Liq., Fert., 2-100 Gal. Tanks, Demco Pump (V9608)
- JD 7000 Conservation Planter, 4 Row (V9752)
- JD 7000 Planter w/Dry Fert. Insecticide, NT Coulters (V8639)
- JD 750 NT Drill, 10', 7.5" Spacing, Press Wheels, Grass Seeder (V9350)
- Great Plains 14' Drill, No-Till, 7" Spacing w/Wt. Brackets, No-Till Hitch (V9798)
- GP 14' NT Drill w/CP Hitch (V8362)
- JD 7000 Conservation Planter 6 Row, w/Liq. Fert. (V9614)
- Great Plains 15' Drill, 26x7, 3 Pt. Solid Stand (V9436)
- JD 7240 Vacuum Planter, 11 Row, Frame MTD Coulters (V9303)

JUST TRADED/COMING IN:

- Steiger PT225 Tractor (W9821)
- Farmall H Tractor (W9829)
- Krause 2413 Disc (T9817)
- Brillion 25' Packer (T9818)
- Krause 5213NT Drill, 13', 7.5" Spacing, 953 acres, Press Wheels, Grass Seeder, Cyl & Hoses (V9641)
- Haybuster 1206 Drill, 11 5', 6" Spacing, Press Wheels (V9409)
- JD 8300 10" Drill (V9461)
- IH 5100 Drill Hitch, PA (V7859)
- Great Plains, 26x7 3 Pt. Drill, 4" Press Wheels (V8486)
- Great Plains 30' Drill (V8224)
- IH 510 Drill (7116D)
- JD 515 Folding Drill, 30', 14' Transport (V8748)
- IH 800 30x6 Planter, Dry Fert., Markets, Monitor (V9601)

USED CHISEL PLOWS & PACKERS

- Farmhand WP42 Cultipacker, 18', Roller Size - 18", 11Lx15 Duals, Notched Rollers (T9714)
- Landoll Coulter Chisel, 15 Shank Coulters, Hyd. Fold (T9558)
- Krause 1070 Chisel w/Coulters 7 Shanks (T9337)
- Bush Hog 15 Shank Chisel Plow, 18.75', Spring Cushion Shanks, Cyl/Hoses (T9793)
- IH 14 Subsoiler, 9 Shank, Gauge Wheels (T8267)
- IH #11 Subsoiler, 7 Sk. Coulters, Gauge Wheels (T9226)
- IH 2 Shank Ripper, 3 Pt. Ripper (T9607)

USED PLOWS

- JD 2500 Auto-Reset Plow, 7-18" Bottoms, Coulters, On-Land Hitch (T6320)
- IH735 4 Bottom Plow, Vari-Width, 17.5" Coulters (T9800)
- IH 720 Plow 5-16", w/Coulters (T9527)
- IH 710 Plow 6-18", Auto Reset, Semi-Mounted (T6813)
- IH 720 5-18" w/Dtl. Hitch (U8769)
- JD 2800 Plow (T9080)

All New & Used Products
Backed By
Hooper Parts & Service
(717)768-8231

HOOPER

C.B. HOOPER & SON INC
INTERCOURSE, PA

© 1995 CASE CORPORATION
Case IH is a registered trademark of Case Corporation

