

### R & R CAR AND TRUCK CENTER

1657 Rohrerstown Road, Lancaster, PA



**90 IHC 4900**  
DT466, 8 Spd., P/S, A/B,  
A/C, 29,500 GVW, 238' WB,  
22' Morgan Reefer with  
Carrier Refrig. Unit  
**PRICED TO SELL**

**42'x13' FRUEHAUF  
REEFER TRAILER**  
CSD, Tandem Axle with  
Frigidare Electric unit 220  
Volt Single Phase  
**\$3,500**



**66 IHC R190**  
V8 Gas, 4 Spd., 2 Stick, P/S,  
Hyd. Brakes, T/A 44,000  
GVW, 18' Platform with  
Hyd Boom Crane  
**Priced To Sell \$1,900**

(10) 28'-40'-45' Storage Trailer

**Call Ray Leed 717-560-4901**



#### 1989 Peterbilt

Model 379, 3406, 425 Cat, 15 Spd. Fuller Trans.,  
63" Hi Top Sleeper, 6 Aluminum Wheels,  
Commercial Wet Line Pump, New Steer Tires,  
Drives 70%, New Clutch, Rods & Mains, New  
Brakes & Seals, 570,000 Mi., REAL SHARPI **\$40,500**

#### 1984 Dorsey Live Bottom Trailer

45'x11'6" with Slide **SOLD** (or 2 yrs. old), FRP  
Sides, New Tires, New Seals, Very Good  
Condition. **\$24,000**

#### HERSHEY FARMS

338 Sunnyside Rd., Elizabethtown, Pa.  
**717-665-7284**

Brand New Kiefer Built 16'  
Stock Trailer, Used 1 Time,  
**\$3400. (717)936-4017.**

Cheap way to haul grain:  
1974 U-model Mack w/22'  
dump trailer, farm truck,  
**\$5,000 firm.**  
**(717)235-2409.**

**B83 Tandem Mack Dump,**  
Just Off Jobsite, Maxi  
Brakes, Power Steering,  
5-4 Trans., Good Running  
Condition. **\$2800.**  
Days:(410)398-9004  
Eves:(410)398-9430.

'95 Dodge Larmie SLT  
2500, 4x4, 360 Magnum,  
auto, PS, PB, PW, PDL,  
cruise, tilt, air, 8,800 GVW,  
8,000 miles w/balance of  
factory warranty, dark  
green & silver, like new,  
**\$22,900. 717-733-2873**

## LEFEVER BROS. CHEVROLET CHEVY TRUCKS



YOUR DIRECT LINE TO GENUINE GM PARTS

**(800) 533-3837**

When you call the number listed above, you'll reach our wholesale  
parts specialists, who can help you keep your GM repair work  
moving quickly.

Ask about:

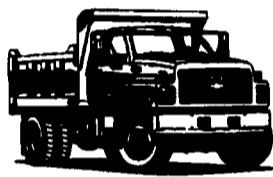
- Specializing in GM Medium Duty Trucks, Current and  
Obsolete.
- \$500,000 Parts Inventory.
- Parts Locator for Those Hard to Find Items.
- We Ship Anywhere, Local Delivery Available.
- Experienced, Knowledgeable Personnel.

Mon., Tues., Thurs., Fri.  
7:30 a.m.-4:30 p.m.  
Weds. 7:30 a.m.-8:30 p.m.  
Major Credit Cards Accepted

**(717) 432-9697**

Quality Dealer Since 1921  
406 U.S. Rt. 15, Dillsburg, PA 17019

**GM Goodwrench Service**



**Kodiak  
Chevy Trucks  
CAT DIESEL POWER**

## QUARRYVILLE

CHRYSLER

PYRAMOUNT

DODGE



**800-781-8220**

Call for Hours, Specials,  
and Location

In The  
Of Lancaster County



**1995 Dodge Ram Sport Club Cab**  
SLT 4x2, 360 V8, Loaded, Black  
w/Grey Cloth. Also 4x4 Coming.



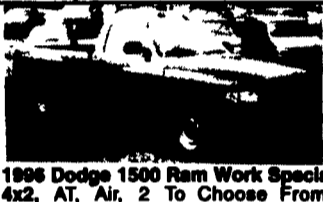
**1988 Chevrolet Blazer Silverado**  
4x4, V8, AT, AC, PW, PDL, Cruise, Tilt,  
AM/FM, Blue & White w/Blue Cloth &  
Extremely Clean! ..... **\$5,995**



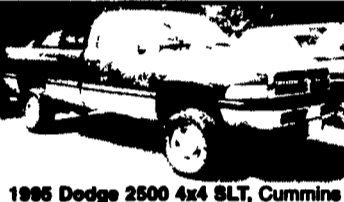
**1987 Dodge B-250 Ram LE 6 Pass.**  
V8, AT, AC, Tilt, Cruise, White . **\$6,995**



**1995 Dodge Dakota Club Cab 4x2, 5**  
Spd AC, AM/FM, Red.



**1995 Dodge 1500 Ram Work Special**  
4x2, AT, Air, 2 To Choose From,  
Brilliant Blue/Flame Red ..... **\$15,995**  
2 To Choose From



**1995 Dodge 2500 4x4 SLT, Cummins**  
Turbo Diesel, Fully Loaded, Burgundy  
& Driftwood w/Grey Cloth.

Nicest  
Pre Owned  
Trucks  
Anywhere!

**RTE. 422 WEST  
LEBANON, PA**

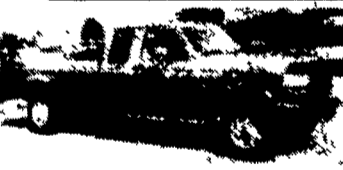
(Across From Lebanon  
Valley Mall)



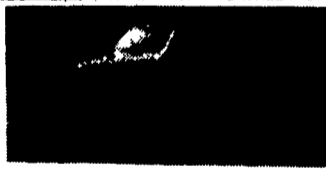
**PHONE  
717-274-2000**

Business Hours  
Mon-Thurs 9-9  
Fri & Sat 9-4

### SPECIALIZING IN HEAVY DUTY TRUCKS



**SUPER CAB 4X4**  
**95 FORD F-250 XLT**  
Incredible Awesome Power Stroke  
Turbo Diesel, H.D. 5 sp., A/C, 4.10  
gears - only 7,000 miles, Gotta see  
it, Gotta Drive it



**3/4 TON 4X4**  
**87 FORD F-250**  
Heavy Duty 3/4 Ton, 381 V8, Auto  
**\$8,800**



**Heavy Duty 3/4 Ton**  
**94 Ford F-250 4x4**  
Heavy 8000 GVW, 381 auto, 21,000  
miles, Tow Pkg.,  
82 Also Available



**FLATBED DUMP**  
**89 FORD F-SUPER DUTY**  
7.3 Diesel, 5 sp., 12 Ft. Dump  
Body, 81,000 Miles, Tow Pkg.  
Pental Hitch



**15 PASSINGER**  
**88 FORD F-350**  
Plenty of Room For Everybody, V8, Auto, Frt. &  
Rear A/C & Heater, Ready To Travel  
**\$8,900**



**UTILITY DUMP**  
**90 FORD SUPER DUTY**  
480 f.l., 5 Spd.,  
A Truck for many uses



**DIESEL BLAZER 4 WHEEL DRIVE**  
**94 CHEVY SILVERADO**  
Plenty of Fuel Mileage, Excellent Ride  
& Handling, 6.6 Turbo Diesel, Auto,  
A/C, Silverado



**4x4 Chassis Cab**  
**94 Chevy 3500**  
Awesome Truck, Awesome  
Power - only 19,000 miles,  
454 f.l., 5 sp.,  
A/C, 161 w.b., 84 ca.  
Priced Right **\$19,900**



**WORKING MAN'S TRUCK**  
**94 FORD F-250 XL**  
Only 32,000 Miles, They Don't Come Any  
Cleaner, 351 f.l., 5 Spd., H.D. 3/4 Ton



**4x4 SUBURBAN**  
**89 CHEVY 1500 SILVERADO**  
Real Clean, Real Nice, 380 f.l., Auto,  
A/C, Beautiful Two Tone Paint, Tow Pkg.



**88 FORD F-150 SUPER CAB**  
**4X4**  
V8, Auto, A/C  
**\$5,500**



**4x4 DUMP 90 FORD F-350**  
Real Strong, 480 V8, Auto, Tow Pkg.,  
39,000 Miles



**Big Dump 93 Ford Super Duty**  
16 ft. Body, 48" High Sides, 7.3 Diesel,  
5 sp., A/C, 28,142 miles



**6.5 TURBO DIESEL**  
**93 CHEVY 2500 4X4**  
Drive This One, Lots of Power, Auto.,  
A/C, All Options, Heavy 3/4 Ton,  
31,000 Miles



**DIESEL SUPER CAB**  
**4 WHEEL DRIVE**  
**93 FORD F-250 XLT**  
Only 18,000 Miles, 7.3 Diesel, Auto,  
A/C, Dual Tanks, Tow Pkg.,  
Don't Miss It



**Super Cab Utility 4x4**  
**95 Ford F-250 XL**  
Awesome Power Stroke Turbo  
Diesel, Auto., A/C, Reading Utility  
Box, only 275 miles, New Truck  
Warranty



**4 DOORS 4X4 95 FORD F-350 XLT**  
Like New & So hard To Find, Only 7,000 Miles,  
480 f.l., Auto, A/C, All Options, Alloy Wheels



**ENCLOSED UTILITY**  
**92 GMC 3500**  
Nice Truck, Only 38,000 Miles, 350, V8, Auto,  
Ready To Go



**CUMMINS TURBO DIESEL**  
**94 DODGE 2500 4x4**  
One Drive Is All It Takes, H.D. 5 Spd. Trans,  
Laramie SLT, Chrome Wheels, 22,000 Miles



**BIG RED 94 DODGE 2500 4x4**  
Real Good Looking, 33" Tires, Aluminum  
Wheels, 360 V8, Auto, Only 16,000  
Miles Priced Right **\$19,900**