



NEW EQUIPMENT SPECIALS

Kubota M5030 DT w/Loader
Kubota M7580 DT, Hyd. Shuttle w/Loader
Kuhn GA 300 GT Rake, 10'
Kuhn GA 4101 GT rake, 12'
Kuhn GMD 801 10 1/2' 3 pt disc mower

USED EQUIPMENT

Kuhn GMC 77 9' 3pt disc mower
Kuhn GA 7301 24' Hyd. folding rake
Deutz Allis 22' hyd/ folding rotary rake
P90 Woods 90" mower

LAWN & GARDEN

Case IH 1130, 24 HP, hydro, w/mower
Ford 1910 FWD w/loader, 800 hours
Grasshopper 52" catcher
Woods 3150, 21 HP, 52"
Ford CM 224 4WD, 60"
JD 525 Front Runner 46"
Kubota B8200 HSD 4WD
Cub Cadet 882 dsl., 50"
Kubota B6100E 48" w/Snow Blower

STOLTZFUS FARM SERVICE

Cochranville, PA 610-593-2407

NEW EQUIPMENT

Sukup 9400 6R Cultivator w/Guidance System
Agco-Allis 5670 2WD
Agco-Allis 4650 2WD
Artway Silamix
Hydra-Mac 1300 Skid Loader
M&W Round Baler
Kidd Bale Chopper
Marlas No-Till Drill 10' Pull Type
Landoll 6R Corn Planter
Landoll 4R Corn Planter
Wood Mowers
Deutz-Fahr Hay Equip.
Kuhn Hay Equip.



USED EQUIPMENT

5670 2W Tractor, Low Hours
AC Model F Combine w/438 C-Head, 13' GH
Mott 6' Field Mower
JD Rake w/wheel at tongue
Deutz DX-130 cab, 2W, excellent condition
Deutz DX 160, cab, 4W, excellent condition
N5 Gleaner combine w/630 C-Head, 15' grain head
6140 AC tractor w/loader, 850 hours, excellent condition

B. EQUIP. INC.

8422 Wayne Highway
Waynesboro, Pa. 17268
717-762-3193



7AM - 5PM Mon.-Fri.
7:00 AM 3 PM

GLEANER®

**REDUCED FOR QUICK SALE
Our Loss — Your Gain**

Badger 16 ft. 3 Beater.....	\$3,800 \$2,900	Badger Blower.....	\$480 \$250
(3) New Holland Balers.....	\$800 \$400 ea	New Holland 26 Blower.....	\$800 \$300
Hesston 1014 12ft. Mow.....	SOLD \$1,500 \$600	Hedlund Martin Spreader.....	\$5,500 \$6,000
Hesston Stack Hand 10.....	\$2,800 \$800	Hesston 620 SP Mow.....	SOLD \$4,200 \$2,300
New Holland Stack Wagon.....	\$1,500 \$500	Kools Blower.....	\$300 \$150
Oliver 3 Bottom Plow.....	\$290 \$100	Case 650 SP Mower.....	\$500 \$200
Littleston Harrow.....	\$800 \$500	Hesston Forage Box.....	\$400 \$100
Ford 5 Bottom Plow.....	\$550 \$400	New Idea 456 Round Baler.....	\$1,200 \$700
Century 500 Gal. Sprayer.....	\$1,700 \$750	Bush Hog 15 ft. Disk.....	\$3,500 \$2,700
Brady Field Cultivator, SOLD	\$1,600 \$700	Hesston Bale Processor.....	\$2,000 \$1,500
Gehl 940 3 beater, 12 to SOLD	\$1,800 \$1,200	Deutz Allis Disc Mower.....	\$2,500 \$1,500
Double Rake Hitch.....	\$850 \$600		

Best Buys in Used Equipment

SPECIAL PRICING ON NEW & RENTAL TRACTORS

TRACTORS	TILLAGE	MISCELLANEOUS
• Case IH 885	• IH 720, 5 Bottom Plow	• NH 36 Ft. Elevator
• Case IH 1394	• IH 540, 4 Bottom Plow	• Hub 48 Ft. Elevator
• Case IH 1370 MS..... \$4,500	• IH 550 5 Bottom Plow	• (3) 30 ft. Elevators
• Case IH 5140 MFD	• JD 6-18 Plow	• Gehl 99 Blower
• Case IH 5140 2WD	• White 254 Disc	• Gehl 1540 Blower
• Case IH 7120	• IH 4 Row Cultivator	• NH 27 Blower
• Case IH 7220 MFD	• JD 18 ft. Field Cultivator	• NH 28 Blower
• IH 5088	• Glencoe 11 1/2 ft. Field Cultivator	• IH 600 Blower
• Case 995	• IH 18 Ft. Field Cultivator	• Used Bedding Choppers
• IH 1086 Mechanics Special	• Mohawk 11 ft. Chisel Plow	• IH 1250 Grinder/Mixer
• Case 1690	• JD 10 ft. Chisel Plow	• Automatic Roller Mill
• IH 656 Hydro	• IH 11 Shank Chisel	• NI 213 Spreader
• IH 1486	• Taylor-Way 24 Cushion Disk	• NI 218 Spreader
• IH 1586	• Case 15 Ft. Heavy Disc (Nice)	• Gehl 250 Spreader
• Farmall 300	• JD 4x16 Trip Plow	• (3) Weaverline 430 Carts
• Ford 8N	• JD 5x16 Trip Plow	• IH 5100 Drill
• Hesston 6066	• IH 11 ft. Disc Harrow	• IH 10 Drill
• Case IH 1394 w/Loader	• Brillion 11 ft. Packer	• JD KBB 13x7 Drill
HAY EQUIPMENT	SKID LOADERS	• JD 8300 Drill—Soybean Special
• NI 486 Round Baler	• Case 1835B	• Miller Spreader
• NH 1495 SP	• Case 1835C	• 18 Ft., 2 Axle Trailer
• Hesston 1090 Windrower	• Case 1840	• 24 Ft., 3 Axle Trailer
• NH 770 Harvester	• Case 1845B Diesel	• Rubber Tire Scraper
• Hesston 1091 Windrower	• Bobcat 632	• Weaverline 424 Cart
• Hesston 1120 Mower	• IH 3300 B	• NI 32 ft. Elevator
• Hesston 1150 Mower		
• NH 848 Baler		

EQUIPMENT FOR RENT

- Magnums
- Skid Loaders
- No-Till Drills
- Maxxums
- Roller Mills
- Balers

ZIMMERMAN'S FARM SERVICE, Inc.

1/2 Mile West Off Rt. 501 On School Rd., Bethel, Pa.

717-933-4114



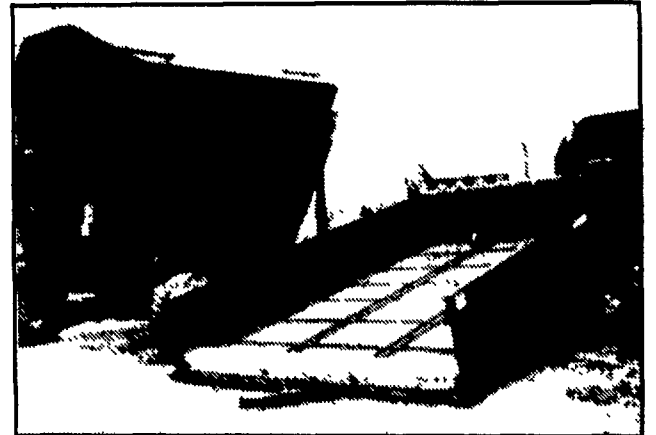
JD 6620 Titan II, side hill,
1988, 1150 hours

610/562-4807

**The Best Just Got Better
at Zimmermans
UNBELIEVABLE REDUCTIONS**

**UFT
Dump Wagons**

**DANCO
Platform Feeders**

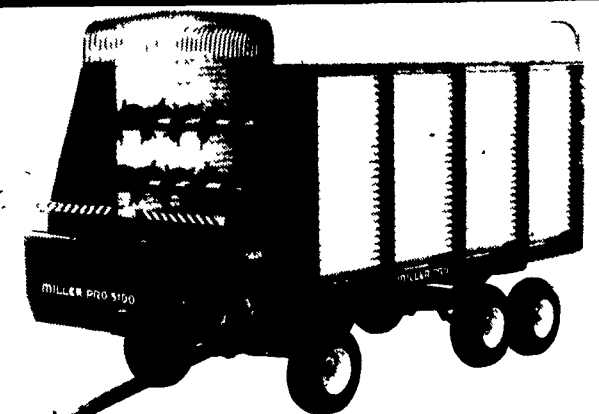


*We dare to compare
Price, Weight & Performance!*

ZIMMERMAN'S FARM SERVICE, INC.

1/2 Mile West off Rt. 501 on School Road, Bethel, PA
717-933-4114

**MILLER PRO
Model 5100 Forage Box**



...The Ultimate Forage Box

- Unitized High Strength Steel Box
- 4-Speed Transmission Operates in a Sealed Oil Bath
- Independent Feathering Clutches for Metering Augers and Outfeed
- Best Warranty in the Industry



LOWEST PRICES OF SEASON

Call For Details

**ZIMMERMAN
FARM SERVICE**

1 Mile West off Rt. 501
On School Road, Bethel, PA
717-933-4114

**MILLER
ST. NAZIANZ**

Miller-St. Nazianz, Inc.
St. Nazianz, WI 54232-0127
Toll Free 1-800-247-5557