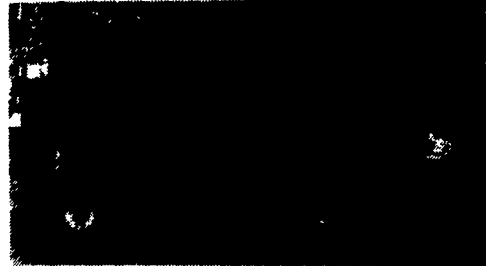
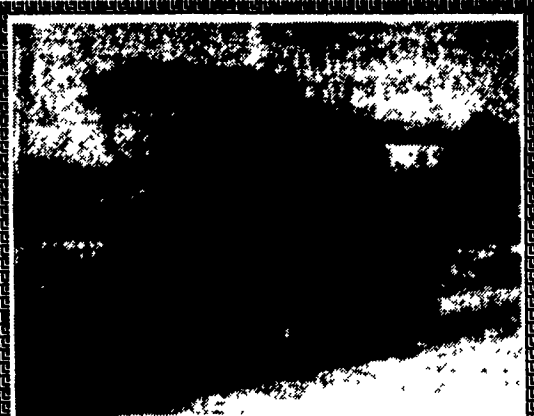


Take Exdt 20B  
Off Of 83, 5 1/2 Mi. West  
To Belmont Farm.



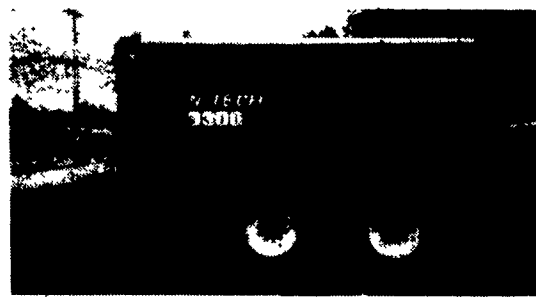
Woods Mow N' Machine,  
Diesel w/Collection System  
**\$3,500**

New Woods Mow N' Machines, 25% Off  
Financing & Trucking Available  
**410-833-9091**



1982 MF550 w/4RN, 1982 Hrs.,  
Very Nice  
**Clugston Ag & Turf, Inc.**  
**(717) 263-4103**

**FARM  
EQUIPMENT**



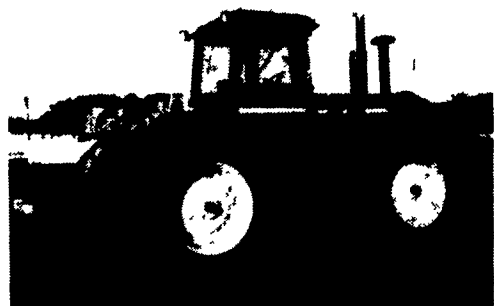
**N-TECH 3300 GAL. RENTAL TANKER**  
...has 4" spindles & hydraulic brakes.

Other rental equipment for sale...  
3-point pump 8' pit pump  
Whether you are looking to buy or rent...

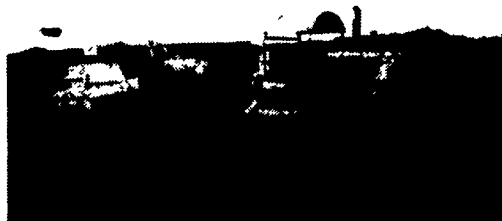
**CALL (301)223-6877**  
**7:30 AM - 5:00 PM**

1980 JOHN DEERE 8640 (Ser.#007495-RW)  
229HP; 4-W/Drive; A/C; 700/65x38 Tires  
(30%/fr/90%/rears); Two Remotes; Quad. Trans.  
Complete Engine Overhaul, over \$6,000 spent  
to overhaul, in Excellent Condition.

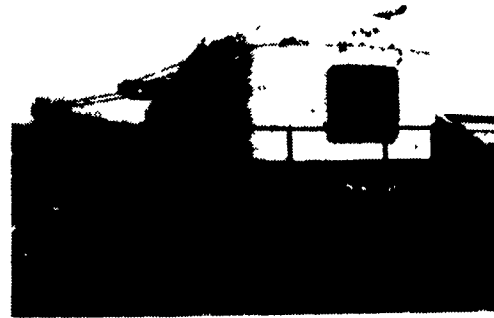
~~\$31,500~~ **\$29,500**



CAT-D8 & PAN (sn#9A1712) (sn#70) capacity  
33,000 lbs. both in good condition.  
~~\$12,000~~ **\$9,500 for both**



CRANE Northwestern Model #250 SN 20089;  
3/4 yd. Detroit 3057-C-3Y; in line, 50 ft. boom,  
track very good condition  
~~\$6,500~~ **\$4,800**



**CALL WHITEFORD CONST.**  
1-800-783-7867 ext. 15 Nick  
or call after 6 p.m. (717) 456-7497  
located south on PA. Rt. 74 & Md. Rt. 165

**COWAN EQUIPMENT**

Martinsburg, PA

814-793-4293 Day or Evening  
or 814-793-9797

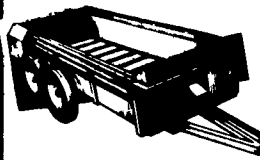
Wanted: Fly Wheel & 3 Pt. Hitch  
Complete For JD 730 Diesel

- JD 5400, 4x4, chopper
- NH 802, 4x4 w/chopper
- NH 1895, 4x4 chopper
- Fox 6250 Chopper, 4x4, corn head & grass pickup
- JD 6600 combine, grain head & corn head
- Gleaner F combine
- NH 1880 chopper
- JD 435 round baler
- JD 2755, 4x4
- JD 2555, cab & air
- JD 2555
- JD 4050, 4 post, quad range
- JD 2950, cab & air, hi-low
- JD 2750, 2WD
- JD 2550, 4x4
- JD 2350, 2WD, 1987 model
- JD 2350, 4x4
- JD 4440, cab & air, power shift
- JD 4440, 4 post, power shift
- JD 2940, cab & air, 4x4
- JD 4630, cab & air, quad range, 4x4
- JD 4430, cab & air, power shift
- JD 2630, hi-low
- JD 4520 w/year-round cab
- JD 4320 w/year-round cab
- JD 4020, '72 model, power shift
- JD 4020, '72 model
- JD 3020, '72 model, powershift, utility
- JD 730, diesel
- JD 620
- JD 520
- JD 450 crawler loader
- IH 1066, fender, black stripe
- IH 1486, cab & air
- IH 574, diesel
- IH MTA w/Wide Front
- Ford TW25, cab & air, 4x4
- Ford 6600
- Oliver 1365, 4x4
- MF 20 industrial w/loader
- NI 325 corn picker, 12 roll bed
- NI 325 corn picker, 8 roll bed
- NI 323 corn picker, 1 row, excellent
- JD 443 corn head
- JD 4 row narrow conversion corn head
- Gleaner 430 corn head
- JD 245 loader
- JD 148 loader, like new
- Axle mount duals for IH 38".....\$650

**CONVEYOR CHAIN**

For Every Make & Model

Manure Spreaders Feed Wagons Forage Boxes



FEED WAGON CONVEYOR CHAIN				
Make	Model	Price Main Conveyor Chain	Price Elevator Conveyor Chain	Price Cross Conveyor Chain
Agmetel	780CC	101.19	NO	80.88
Artway	251 B3	251.83	NO	NO
Artway	155	835.27	NO	NO
Bauer	380 480	NO	NO	240.08
Bumseyway	CSF	83.80	NO	NO
Clay	Ranger	138.80	NO	88.65
Elizan	1800	379.72	-	-
Farm Aid	250 340 430	-	-	130.67
Farmhand	F44A,210	342.00	-	317.26
Gehl	7435 7500	NO	NO	227.40
Gran-O-Vator	65	POR	NO	POR
Hankle	Kwikmizer	NO	NO	184.64
Int. Harv	200	1.670	NO	NO
John Deere	410	POR	NO	POR
Kelly Ryan	BIG	NO	NO	172.28
Koehring (Fox)	512	448.85	410.00	NO
(Fox-Bredy)	546	POR	NO	286.47
Knight	L9C BA12	NO	NO	230.60
Meyer	BA14 BA16	-	-	-
Pear	Unloader	514.15	-	-
Mohrning	MFR320	POR	POR	-
Olway	333	1709	POR	209.61
Papac	45	232.83	POR	POR
Reiser	60	252.29	-	-
Schuler	170	400.00	390.00	NO
Schwartz	880	NO	NO	279.11
Supreme	Cutter	NO	NO	-
Mixer	150.78	-	-	-
Uebler	780 781	197.28	NO	POR
Van Dale	185	POR	NO	POR
Weaverline	420	73.99	NO	NO
Wic	45-08-88	103.90	NO	POR



FORAGE BOX CONVEYOR CHAIN				
Make	Model	Price Steel Chain	Price Pinto Chain	Price Cross Chain
A-C	17142-0	259.12	327.58	180.40
Artway	SN2316'	302.82	382.29	-
Badger	6516	282.57	328.24	POR
Danco	16'	301.35	376.08	183.80
Dion	14	268.65	340.32	-
EZ	716	-	-	172.10
Fox	WB16A	306.07	380.40	172.23
Gehl	700 710	-	-	-
H&S	810	270.00	340.40	189.41
H&S	500 16'	296.07	370.80	182.91
Heuston	7222 16'	299.06	374.71	POR
Int. Harv	61	267.84	338.28	-
J Deere	110	299.65	427.36	205.38
Kasten	Per Box	-	-	-
	15'	299.98	374.71	-
Knight	14.7	231.36	300.00	183.67
Lanco	Rax 14'	285.16	330.82	180.19
Meyers	516	308.73	383.29	205.98
Miller	Pro 2150	288.05	338.42	177.55
NH	8	298.61	373.36	186.05
Papac	140	284.58	335.01	-

**PRATT INDUSTRIES**

CALL FREE

800-392-3377.

ALL MFG'S NAMES NUMBERS SYMBOLS DESCRIPTIONS AND PRICES ARE USED FOR REFERENCE PURPOSES ONLY AND IT IS NOT IMPLIED THAT ANY PART LISTED IS THEIR PRODUCT

**NEW EQUIPMENT SPECIALS**

- 5640SL Tractor 12x12 Trans, 4WD..... **\$29,995**
- 254 Fake Tedder (Demo)..... **\$3,895**
- \* 40 Blower..... **\$3,950**
- \* 60 Blower..... **\$4,200**
- 452 Disc Mower..... **\$4,395**
- 252 Dual Rake Hitch..... **\$1,495**
- 951B 60" Rotary Mower..... **\$795**
- 951B 72" Rotary Mower..... **\$1,150**
- 306 Spreader 1400 Gal. Sides..... **\$7,995**
- 816 Forage Box w/ 612 Wagon..... **\$9,395**



**55 GAL DRUM OIL SPECIAL**

- 134 Hydraulic Oil..... **\$230**
- 30 Engine Oil..... **\$217**
- 15-40 Engine Oil..... **\$225**
- 10-30 Engine Oil..... **\$225**
- ATF-Mercon/Dexron III..... **\$260**



Power Equipment

(L) DESIGNATES  
LOYSVILLE LOCATION



NEW HOLLAND

**TIRE SALE**

**A FEW SUPER DEALS**  
WHILE SUPPLIES LAST



- GENERAL TIRE STOMIL GALAXY**
- 11.2x24 8 ply \$125
  - 12.4x24 8 ply \$179
  - 13.6x24 8 ply \$245
  - 14.9x24 4 ply \$195
  - 16.9x24 6 ply \$269
  - 16.9x26 6 ply \$290
  - 23.1x26 12 ply \$490
  - 28.1R26 12 ply \$880
  - 28.1x26 10 ply \$875
  - 18.4x26 10 ply \$363
  - 11 2x28 6 ply \$159
  - 12.4x28 6 ply \$169
  - 13.6x28 8 ply \$189
  - 14.9x28 8 ply \$219
  - 16.9x28 6 ply \$259
  - 18.4x28 6 ply \$390
  - 16.9x30 6 ply \$265
  - 18.4x30 6 ply \$310
  - 9.5x32 6 ply \$165
  - P23.1x30 8 ply \$590



- GOODYEAR**
- 24.5x32 10 ply \$895
  - 30 5Lx32 10 ply \$990
  - 16 9x34 8 ply \$295
  - Radial R-1
  - 18.4R38 10 ply \$465
  - 20.8R38 10 ply \$650
  - 13.6R24 8 ply \$285
  - 14.9R24 10 ply \$285
  - 16.9R26 10 ply \$485
  - 14 9R28 8 ply \$325
  - 16.9R28 8 ply \$345
  - 16.9R28 8 ply \$369
  - 16.9R30 8 ply \$369
  - 30.5LR32 12 ply \$950
  - 30.5LR32 16 ply \$1290
  - 16.9R34 8 ply \$395
  - 18.4R34 8 ply \$459
  - 18.4R34 8 ply \$325
  - 13.6R36 8 ply \$325
  - 16.9R38 8 ply \$485
  - 18.4x38 8 ply \$339
  - 23.1x34 8 ply \$790
  - 9.5x36 6 ply \$175
  - 11.2x36 4 ply \$210



- ARMSTRONG**
- B16.9x24 6 ply \$249
  - B17 5Lx24 8 ply \$289
  - B18.4x24 10 ply \$450
  - L15.5x25 12 ply \$359
  - L20.5x25 12 ply \$690
  - L23.5x25 16 ply \$895
  - 14 9x26 6 ply \$255
  - 17.5x25 12 ply \$475
  - 11.2x34 4 ply \$225
  - 11 2x38 4 ply \$210
  - 12.4x38 4 ply \$245
  - Radial R-1
  - 18.4R42 10 ply \$825
  - 20.8R42 10 ply \$825
  - 14.9R 48 10 ply \$690
  - 18.4x42 10 ply \$575



- FIRESTONE**
- 18 4x28 6 ply \$400
  - 18.4R38 8 ply \$559
  - 18 4R34 8 ply \$490
  - 20.8R42 10 ply \$790
  - 20.8x38 8 ply \$625
  - 15.5x38 6 ply \$300
  - 20.8x34 8 ply \$600
  - 18.4x38 8 ply \$465



- FIRESTONE**
- 13.6x36 6 ply \$265
  - 13.6x38 8 ply \$265
  - 16.9x34 6 ply \$290
  - P14.9x38 6 ply \$285
  - P15.5x38 6 ply \$265
  - P12.4x24 8 ply \$185
  - P16 9x38 6 ply \$365
  - P28Lx26 10 ply \$950
  - 18.4x26 6 ply \$319
  - 13.6x38 \$210
  - 14.9x38 8 ply \$295
  - 15.5x38 6 ply \$269
  - 18.4x38 \$369
  - 20.8x38 8 ply \$569
  - 20.8x34 8 ply \$559
  - 18.4x42 10 ply \$575

**1-800-548-1884 or 315-539-2764**