

Make An Offer On A Tough New Farmhand Fall Seed Bed Preparation Tool

Cultimulcher In Stock For Fall Seeding and For Clod Busting Action See Binkley & Hurst Bros. Now For A New 13'10" Culti-mulcher In Stock! With Quality Features! We Are Ready To Deliver!



Tough. Reliable. Heavy-duty features you can count on. Stop in. Check out a CultiMulcher from Farmhand.

New 13'2" Model In Stock Ready To Put To Work! With Hydraulic Lift (4) 11Lx15 Tires, Jack Stand NE 09926

**List Price \$10,200
Special Sale Price \$7,795
Call Today For Quick Delivery Ask About Our Financing**



Weight Transfer is needed on some fields for best mulching results. Unique Farmhand system allows weight to be distributed between the front and rear rollers and the draw bar as needed.



Bearings on torsion-mounted hangers and roller tool bars combine with split roller axles to isolate shock loads. Up to 12 triple-lip sealed, self-aligning ball bearings are used on the main frame of each machine.

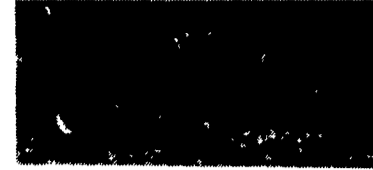
We Are Ready To Deliver!

BINKLEY-HURST BROS. INC.

133 Rothsville Station Rd.
P.O. Box 0395
Lititz, PA 17543-0395
(717) 626-4705
1-800-487-2978

Farm Plan
A Service of FPL Financial
Fax 717-626-0996

See **Degelman** Binkley & Hurst Bros. For Quality Rock Pickers & Rakes NOW! REMOVE ROCKS BEFORE FALL SEEDING



Grated Hopper Bottom
We use spring steel straps in the hopper instead of using mild steel. The hopper is engineered to bounce back in shape.

Hydraulic Drive
The most popular drive on rock pickers is hydraulic which is standard on the 6000. We have incorporated a relief valve to take away the shock when disengaging the drive.

Retardion Tires
The 16.5Lx16.1 Retardion tires are standard equipment and are a must to reduce soil compaction.

Reel Assembly
We are using the same reel as the proven Super Picker 6800. The three paddal reel has a large diameter, hard surfaced teeth and heavy duty paddles.



Swing Pole
The manual swing pole is easy to maneuver in both working or transport position.
Solid Shaft Grill Tines with Replaceable Grill Tips.
This modern grill is easier to maintain, has longer life giving you less down time. The unique grill provides five feet of clean shifting and virtually jamless performance.
may be the picker you'll need!

For Excavating & Snow Removal & Grading SEE BINKLEY & HURST FOR TRACTOR MOUNT DOZER BLADES



4600 & 5700 Series
The Degelman 4600 & 5700 hydraulic angle Bull-dozer Blades attach to both front wheel assist and two wheel drive farm tractors. They incorporate a clean looking, low profile design and are built strong and tough, heavy duty construction to achieve a dozer blade that's ready to tackle demanding farm jobs. Ease of operation, built-in quality and the convenience of finger tip hydraulic angle control are only a few of the many features you'll appreciate.

BINKLEY-HURST BROS. INC.
Fax 717-626-0996

133 Rothsville Station Road
P.O. Box 0395
Lititz, PA 17543-0395
(717) 626-4705
1-800-487-2978

Farm Plan
A Service of FPL Financial

For All Your Round Bale Handling Needs See Binkley & Hurst With A Wide Selection of Handling & Transport and Wrapping Equipment



**Take A Look At This Unit, In Stock Now!
30 Foot Long Round Bale Transport Carrier
Designed For All Size Round Bales, Check One Out
Today At Binkley & Hurst**

ALL STEEL, ADJUSTABLE & NON-ADJUSTABLE BALE RACKS

These racks are of all steel construction. The extensive field use and testing has proven this design to be adequate in strength and durability. Available in both regular straight bar or the new curved bar design as shown in the picture. The curved bar tilts the load towards the centre for greater stability.

The non-adjustable racks are of all-welded construction and available in various lengths and widths for different size and number of bales.

Adjustable racks have movable cross members which can be set anywhere along the entire length of rack. Clamping method is simple and rigid and easily adjustable. Crosses are removable for shipping or storage.

The longitude beams on the 30 ft. model are 4 x 10 x 188 H S Tube. The longitude beams on the 20 or 25 ft. model are 4 x 8. The cross members are 3 x 5 x 150 H S Tube.

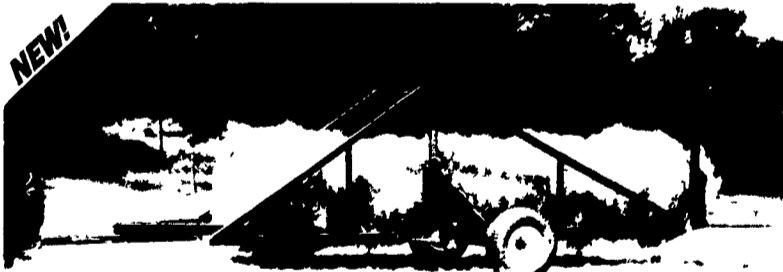


Adjustable Width Cross Members For Varying Width Bale Size



Ideal for Dry or High Moisture Round Bales

The ROUND BALE TRANSPORTER



Patent Pending

- One Man • One Tractor • Load & Transport From Field to Storage • Handle Bales 40" to 72" in Diameter •



4 Bale Unit



6 Bale Unit

- Load-Lower unit & back up-bales align themselves
- Transport-Raise unit & go
- Unload-Lower unit & drive off

DO IT ALL FROM THE SEAT!

If You Are A Farmer Who Has A Need To Handle Round Bales In Narrow Barn Walkways, Check Out Our Options, Rotary Carts Rotate To Unroll Bales Into Feed Troughs And Stable Areas Ask For Amos Sr. In Our Sales Dept. Today

- Low cost method of feeding round bales in the stable
- Four wheel steering for tight corners
- Easy to convert from two to four wheel steering or vice-versa; simply move one bolt
- Rotary table mounted on tapered roller bearings
- Table lock to prevent undesired rotation
- Brake on when handle is up
- Can be supplied with quick change brackets for easily switching handle to front or rear.

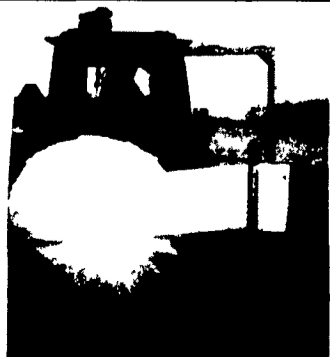
	RO48	RO46	Multi-Purpose
Table Height	19"	15 1/2"	19"
Table Size	42"	42"	30x60
Track Width	34"	(on outside of tires)	28"
Bearings	Taper Roller	Graphite Bushing	Taper Roller
Tire size	4.80x8	13.5x.150	4.80x8
O.V.H. CAP	16 1/2"	13"	16 1/2"
	1500 lbs.	1500 lbs.	1500 lbs.

ROTARY BALE CARTS & MULTI-PURPOSE WAGON

The lift unit is operated with a manual winch. The bale is lifted up for loading on the bale cart. Main frame of lift unit is adjustable for height. The bale grabber is adjustable for 4 or 5 ft. bales. The bale grabber can also be used with front end loader or any other suitable means.



Multi Purpose Wagon



Round Bale Wrappers

In Stock At Reasonable Prices!

Ask For Amos Sr.

BINKLEY-HURST BROS. INC.

133 Rothsville Station Rd.
P.O. Box 0395
Lititz, PA 17543-0395
(717) 626-4705
1-800-487-2978

Farm Plan
A Service of FPL Financial
Fax 717-626-0996