

OVER 120 TRUCKS



1994 Warren Semi-Frameless Dump
 38 1/2' x 60". Hub-pilot wheels 11/24.5, Shurlock Tarp, 3 way gate, excellent condition
\$35,000 or B.O.
 (Possible will swap for reefer trailer)
 Call Bob or Don 5-8 pm (610)869-8449



1988 CHEVY 3500 SILVERADO
 5.7L V8, AT, AC, Tilt, Cruise, PW, PDL, Cass., Class III Hitch, Bed Liner, Champagne, 127,000 Miles
\$6,800

PINE TREE MOTORS
 Rt. 322 & Clearview Road, Clay Lancaster Co., PA
 717-738-2242



91 DODGE D350 4x4
 Cummins Turbo Diesel, AT, A/C, PS, PB, Red w/Grey Int.



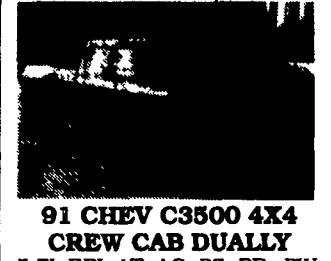
94 FORD F250 4x4
 Extend Cab, 8,600 GVW, 7.3L Diesel, AT/OD, AC, PS, PB, PW, PL, C, T, XLT Lariat Pkg, Maroon & Silver w/Alum. Wheels #F397



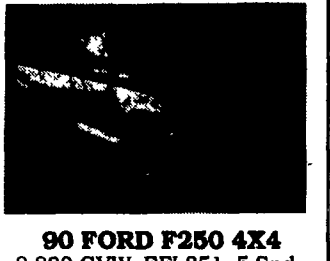
89 DODGE D250 4x4
 Cummins Turbo Diesel, AT, PS, PB, #D144



88 FORD F250 4x4
 Heavy Duty, Super Cab, 460 V8, AT, PS, PB, only 59,000 Mi. #F390



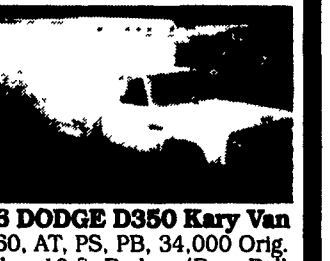
91 CHEV C3500 4X4 CREW CAB DUALY
 5.7L EFI, AT, AC, PS, PB, PW, PL, C, T, Silverado Pkg., Only 49,000 Miles. #C289



90 FORD F250 4X4
 8,800 GVW, EFI 351, 5 Spd., A/C, PS, PB, PW, PL, C, T, #F394



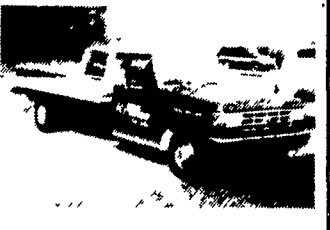
90 DODGE B350 HI-TOP MINI-BUS
 Complete w/Wheel Chair Lift & Seating, 360, AT, Dual A/C, PS, PB, 60,000 Mi., Hard To Find #D140



86 DODGE D350 Kary Van
 360, AT, PS, PB, 34,000 Orig. Miles, 10 ft. Body w/Rear Roll-up Door, Excellent Condition #D148



89 GMC C3500 STAKE BODY DUMP 4x4
 EFI 350, AT, A/C, PS, PB, Dual Rear Wheel w/Complete Western Plow Pkg., 9 ft. Elect. Dump, 70,000 Mi. Nice Condition #G140



87 FORD F350 CHEVRON ROLLBACK
 460; 5 Spd., O.D. Trans., AC, PW, PL, C, T, One Owner, 60,000 Mi.



91 FORD F350 12 FT STAKE BODY
 EFI 351, AT/OD, A/C, PS, PB, AM/FM Stereo, Complete with Power Lift Gate & Western Snow Plow Pkg. only 8,700 Orig. Miles, Showroom Cond. #F398

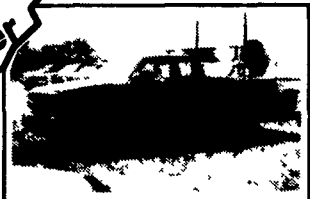


88 GMC 3500
 10 Ft. Mason Dump 350 V8, PS, PB #G139

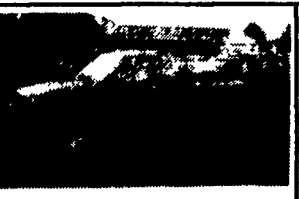
JONES BEST BUY USED TRUCKS

LANCASTER'S LARGEST GM Truck Dealer & We're Getting Bigger!

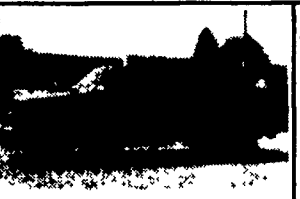
JONES PONTIAC • HONDA GMC TRUCK
 1335 Manheim Pike, Lancaster
 Prices based on straight sale, Tax & Tags extra. Trades accepted at actual cash value. Must present this ad at time of purchase for sale price.
717-394-0711



'94 CHEV 3/4 Xcab 4x4
 AT, AC, V8, 6 1/2 Bed #6145 Was \$21,995
SALE \$19,900



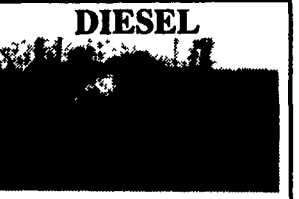
'94 TOYOTA 4x4
 4 Cyl., 5 Spd., Clean #6161 Was \$15,400
SALE \$13,550



'93 CHEV K15 4x4 SPORTSIDE
 Silverado, AT, AC, V8 #6107 Was \$23,300
SALE \$21,200



'90 GMC SUBURBAN 4x4
 AT, AC, V8, Silverado, 8 pass #6149 Was \$16,995
SALE \$15,200



'91 GMC SUBURBAN SLE, AT, AC, 9 Pass, Clean
 #6170 Was \$15,995
SALE \$14,100



'92 CHEV SUBURBAN 3/4 4x4
 454, AT, AC, Silverado #6158 Was \$24,995
SALE \$22,300



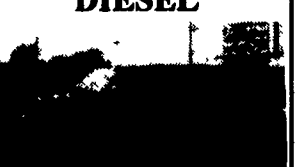
'91 CHEV K1500 4X4
 AT, AC, V8, Silverado, 29,000 Miles #6181 Was \$17,995
SALE \$15,980



'92 FORD F150 4x4 XLT, AT, AC, V8
 #6157 Was \$16,995
SALE \$15,200



'90 GMC SAFARI VAN
 AT, V6, AC, SLE 8 Pass. #5946 Was \$11,995
SALE \$6,970



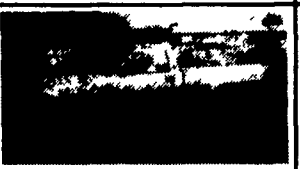
'94 CHEV K30 4x4
 6.5 Turbo, AT, AC #6177 Was \$25,900
SALE \$23,700



'95 GMC 15' CUBE VAN
 11,000 GVW, AT, V8, Supreme Body, (12' in Stock Also) #11659 List \$25,034
SALE \$20,750



'90 Ford F250 Xcab 4x4, V8, AT, AC, XLT
 #5972 Was \$13,995
SALE \$10,300



'94 GMC SONOMA 4X4
 V6, AC, SLE, 5 Spd., 2000 Miles #6173 Was \$16,900
SALE \$14,700



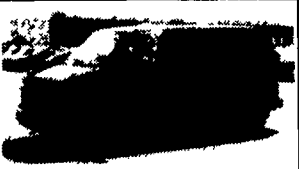
'93 FORD F150 Xcab 4x4
 AT, XLT, AC, V8 #6166 Was \$20,995
SALE \$18,875



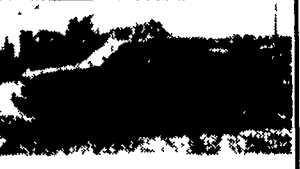
'88 FORD RANGER X-CAB
 V6, XLT, 5 Spd., 59,000 miles #6187 Was \$8,995
SALE \$6,250



'92 GMC K2500 4X4
 8600 GVW, AT, AC, V8, SLE #6184 Was \$17,995
SALE \$16,100



'89 GMC SAFARI VAN
 AT, V6, AC, 8 Pass. #6119 Was \$9,900
SALE \$7,850



'94 CHEV SUBURBAN 4x4
 Silverado AT, AC, V8, 8 Pass. #6139 Was \$29,300
SALE \$27,900



'92 GMC YUKON 4X4
 AT, AC, V8, SLE #6172 Was \$22,700
SALE \$20,100



'95 GMC SUBURBAN 4X4
 Geneva Conversion, AT, AC, V8, TV, VCR, & More #12340 Was \$53,831
SALE \$45,375