

Martin's Used Trucks & Equipment Inc.

560 Lampeter Rd., Lancaster, PA 17602

1987 R 688 ST
350 HP - 9 Spd. Jake Brake -
P/S AC, Air Ride Cab - 12/38
- Low Miles - Very Clean
\$17,900

1988 IH 1954
DT 486 - 5+2 Spd - 25,000
GVW - 24 Ft. Van Body - Ex.
Cond. - NO CDL
other Cab & Chassis
\$10,900

1989 CHEV. KODIAK
230 HP - Diesel - 8 Spd. A/B
- 32,000 GVW - 24 Ft. Body -
Double Frame - Solid Truck
\$12,500

(717) 392-6266 (717) 299-6200

WE SERVICE WHAT WE SELL

1989 Peterbilt
Model 379, 3406, 425 Cat, 15 Spd. Fuller Trans.,
63" Hi Top Sleeper, 6 Aluminum Wheels,
Commercial Wet Line Pump, New Steer Tires,
Drives 70%, New Clutch, Rods & Mains, New
Brakes & Seals, 570,000 Mi., REAL SHARPI **\$40,500**

1984 Dorsey Live Bottom Trailer
45'x11'6" with Slide **SOLD** or (2 yrs. old), FRP
Sides, New Tires, New Seals, Very Good
Condition. **\$24,000**

HERSHEY FARMS
338 Sunnyburn Rd., Elizabethtown, Pa.
717-665-7284

USED TRUCKS



93 Chev 2500 Heavy Duty Ext Cab 4X4,
Silverado, 350 FI, 5 Spd., PS, PB, AC, PW,
PDL, Cruise, Tilt Wheel, AM & FM Stereo
Cass, Rear Sliding Window, 31,000 Miles,
Black with Gray Cloth

\$19,800



94 Ford F-250 4x4, 8600 GVW 5.8 FI,
auto, w/od, ps, pb, ac am & fm stereo, dual
tank 32,000 miles one owner

\$18,500

Financing
Available

MARTIN'S AUTO SALES
1025 W. Main St., New Holland, PA 17557
(717) 656-6621

THE NEW SHAPE OF SUCCESS



Snyder
VOLVO TRUCK CENTER

2150 S. Queen Street
I-83 & Rte. 74 • York, PA 17402
(717) 741-4681



TRIANGLE MOTOR SALES

2730 S. Queen St.
York, PA

717-741-3144



1995 Dodge D2500 4x4 Longbed Pickup, Blue,
V-10, SLT Laramie, 3/4 Ton, Automatic, Air,
PS, PB, PW, PDL, Cruise, Tilt, Factory Cassette,
Alloys w/31" RWL Tires. **\$24,995**
Only 16,000 Original Miles



1988 Ford Bronco II XLT, 4x4, Gold/Brown,
Auto., A/C, PB, PS, P-W, PDL, Cruise, Tilt,
AM-FM, Stereo, Cass., 2.9 Liter EFI V6 Motor,
Factory Alloy Wheels w/RWL Radials, This Is
An Outstanding Local One Owner Vehicle w/
45,000 Original Miles. **\$10,995**



1989 Chevrolet S-10 Blazer 2-Door, 4x4,
Green/Gold, 76,000 Miles, Auto., AC, PB, PS,
Cruise, Tilt, AM-FM, Stereo, 4.3 Liter V6, Tahoe
Trim Package, Factory Roof Rack, Rear Privacy
Glass, Very Sharp Vehicle **\$10,995**

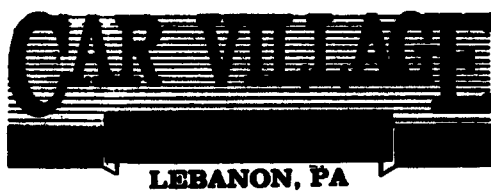


1988 Ford Bronco Eddie Bauer, 4x4, Blue/Tan,
Auto., AC, V8, 302 Cu in. PB, PS, P-W, PDL,
Cruise, Tilt, AM-FM, Stereo, Cass., Loaded Full-
Size Sport Utility Vehicle **\$9,995**

Nicest
Pre Owned
Trucks
Anywhere!

RTE. 422 WEST
LEBANON, PA

(Across From Lebanon
Valley Mall)



PHONE
717-274-2000

Business Hours
Mon - Thurs 9-9
Fri & Sat 9-4

SPECIALIZING IN HEAVY DUTY TRUCKS



SUPER CAB 4X4
85 FORD F-250 XLT
Incredible Awesome Power Stroke
Turbo Diesel, H.D. 5 sp., A/C, 4.10
gears - only 7,000 miles, Gotta see
it, Gotta Drive it



3/4 TON 4X4
87 FORD F-250
Heavy Duty 3/4 Ton, 381 V8, Auto
\$6,900



Heavy Duty 3/4 Ton
84 Ford F-250 4x4
Heavy 8600 GVW, 381 auto, 21,000
miles, Tow Pkg.,
82 Also Available



FLATBED DUMP
89 FORD F-SUPER DUTY
7.3 Diesel, 5 sp., 12 Ft. Dump
Body, 81,000 Miles, Tow Pkg.
Pental Hitch



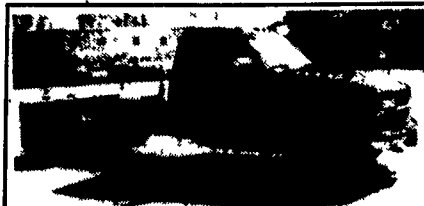
1 TON 4X4
88 FORD F-350
480 f.l., 5 Spd.
\$6,900



UTILITY DUMP
90 FORD SUPER DUTY
480 f.l., 5 Spd.,
A Truck for many uses



DIESEL BLAZER 4 WHEEL DRIVE
94 CHEVY SILVERADO
Plenty of Fuel Mileage, Excellent Ride
& Handling, 6.5 Turbo Diesel, Auto,
A/C, Silverado

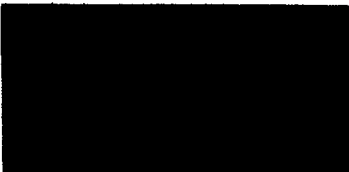


4x4 Chassis Cab
94 Chevy 3500
Awesome Truck, Awesome
Power - only 19,000 miles,
454 f.l., 5 sp.,
A/C, 161 w.b., 84 ca.
Priced Right **\$19,900**



STAKE BODY DUMP
91 CHEVY 3500 H.D.
Plenty Strong, Ready For Work, 454 V8
Auto., 12 Ft. Body, Only 84,000 Miles

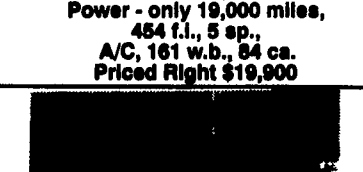
CREW CAB DUALY
90 FORD F-350 XLT
Real Clean, Real Nice, 460 AT, A/C, Tow
Pkg., 8th Wheel & Class 3 Hitch,
Custom Wheels



88 FORD F-150 SUPER CAB
4X4
V8, Auto, A/C
\$5,500



ALUMINUM BOX 91 CHEVY
Heavy Duty Big 15,000 GVW. - Ready
for the heavy load V8 Auto 14 ft Body
roll up door. 43,000 miles



Big Dump 83 Ford Super Duty
18 ft. Body, 48" High Sides, 7.3 Diesel,
5 sp., A/C, 28,142 miles



6.5 TURBO DIESEL
83 CHEVY 2500 4X4
Drive This One, Lots of Power, Auto.,
A/C, All Options, Heavy 3/4 Ton,
31,000 Miles



DIESEL SUPER CAB
4 WHEEL DRIVE
83 FORD F-250 XLT
Only 18,000 Miles, 7.3 Diesel, Auto,
A/C, Dual Tanks, Tow Pkg.,
Don't Miss It



Super Cab Utility 4x4
85 Ford F-350 XL
Awesome Power Stroke Turbo
Diesel, Auto., A/C, Reading Utility
Box, only 278 miles, New Truck
Warranty



4 DOORS 4X4 85 FORD F-350 XLT
Like New & So hard To Find, Only 7,000 Miles,
480 f.l., Auto, A/C, All Options, Alloy Wheels



ENCLOSED UTILITY
92 GMC 3500
Nice Truck, Only 28,000 Miles, 380, V8, Auto,
Ready To Go



1 TON CHEVY
85 CHEVY C-30
V8, Auto
\$2,200



PERFECT
94 FORD F-150 SUPER CAB 4X4
Short 6 Ft. Box, Only 12,000 Miles,
302 f.l., Auto, A/C, Tilt, Cruise, Pwr
Windows & Locks, Custom Wheels,
Beautiful, 2 Tone Paint