

Hauling 22' reefer with 2000 lb. lift gate 717-789-4820

Newly Repainted Oak and Wood Stock Trailer, 12X6 Seat, Double Axle, New Tires (717)286-7952

TRUCK Mack MS200, 1986, Maryland inspected, \$6,000 410-833-9091

Truck engines CAT 1693, Cummings 290, GM 8V71. Also truck parts; Make offer, 215/663-9221.

Truck Parts: 1966 Ford F600, Good Motor, \$300. 1961 IH B160, Good Motor, \$300. 11' Bed and Dump, \$300 Twin Cylinder Hoist and Pump for 14' Bed, \$400 Chrysler 360 Engine, \$400 Chrysler 318 Engine, \$200 (717)428-1865

35 TRUCKS & TRAILERS



Car Haulers New 18x85,.....\$2,350
#7000 - 24x85 Gooseneck (Adj. Dove Tail)\$4,250
#14000 - Brake Both Axles - Built In Loading Ramps - New Tires

410-876-2566

R & R CAR AND TRUCK CENTER

1657 Rohrerstown Road, Lancaster, PA



86 IHC
S1954 DT466, 5 & 2 Spd., P/S, A/B, 33,000 GVW, 180' WB, Only 135,000 Miles
CALL FOR DETAILS

42'x13' FRUEHAUF REEFER TRAILER
CSD, Tandem Axle with Frigidare Electric unit 220 Volt Single Phase
\$3,500



82 IHC
S1954, DT466, 5 & 2 Spd., P/S, A/B, 33,200 GVW, 14' Platform Dump, New Insp., Very Clean
Reduced To \$11,900

(10) 28'-40'-45' Storage Trailer

Call Ray Leed 717-560-4901

"Revvin' to take care of ALL your trailer needs."



HAS BUILT A REPUTATION

United Expressline
8x16 Cargo

Moritz International
CBR-16

ERY Aluminum
7x20 Gooseneck

NEW & USED: STOCK - HORSE - CARGO - INDUSTRIAL - UTILITY - CAR HAULERS

Trailer Enterprises is here to serve you. We are a full service facility providing YOU with the very best service available in the industry!

TRAILER ENTERPRISES, INC.

13121 MAUGANSVILLE ROAD
HAGERSTOWN, MD 21740

Just give us a call at (301) 791-5343.

Hours: 8AM-5PM Monday-Friday
9AM-12 Noon - Saturday

QUARRYVILLE

CHRYSLER

PLYMOUTH

DODGE

800-781-8220

Only 10 Minutes South of Lancaster On Rt. 222

In The Heart Of Lancaster County



1995 Dodge Ram Sport Club Cab
SLT 4x2, 360 V8, Loaded, Black w/Grey Cloth. Also 4x4 Coming.



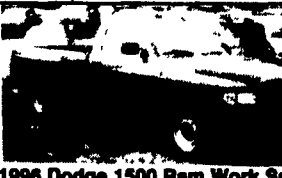
1988 Chevrolet Blazer Silverado
4x4, V8, AT, AC, PW, PDL, Cruise, Tilt, AM/FM, Blue & White w/Blue Cloth & Extremely Clean! \$5,995



1987 Dodge B-250 Ram LE 8 Pass.
V8, AT, AC, Tilt, Cruise, White. \$6,995



1995 Dodge Dakota Club Cab 4x2, 5 Sprl. AC, AM/FM, Red.



1996 Dodge 1500 Ram Work Special
4x2, AT, Air, 2 To Choose From, Brilliant Blue/Flame Red \$15,995
2 To Choose From

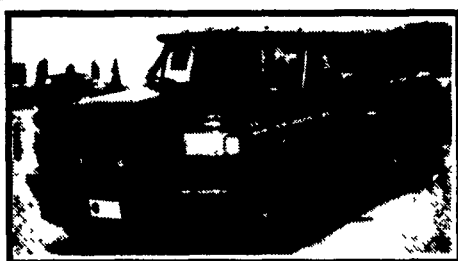


1995 Dodge 2500 4x4 SLT, Cummins Turbo Diesel, Fully Loaded, Burgundy & Driftwood w/Grey Cloth.

Mark Vills • Pickups • Broncos • Stake Body • Crew Cabs

Contours • Aspires • Diesel Pickups • Mustangs • Thunderbirds

Explorers • Grand Marquis • XLTs • Custom Vans



Great Selection F250's & F350's Supercab & Crew Cab
Power-Stroke Diesels In Stock



'95 FORD F350 SUPER CAB
460, V8, Automatic, XLT, Air, Wheels #7161
Was \$27,216 NOW **\$24,999**



'95 FORD F350 DUMP TRUCK
Power Stroke Diesel, Automatic #7140
Was \$34,357 NOW **\$29,999**



'95 FORD F350 Chassis Cab
460, 5 Speed, XLT Package #7057
Was \$25,366 NOW **\$22,499**



'95 FORD F250 4x4
Power Stroke, Auto, XLT #7082
Was \$29,245 NOW **\$26,799**



'95 E350
15 Passgr., V8, Auto., XLT, Only 19,000 Miles #PR2392
Was \$24,999 NOW **\$22,999**



'94 F250 4x4
351, V8, Auto., Air, Only 17,000 Mile. #P2400
Was \$21,999 NOW **\$20,499**



'94 F250 4X4
351, V8, Auto., XL, Only 9800 Miles #P2344
Was \$21,999 NOW **\$20,499**



'94 F250 SUPERCAB 4X2
Power Stroke Diesel, 5 Speed, Only 2800 Miles #PR2353
Was \$25,999 NOW **\$23,999**



'91 RANGER SUPER CAB
6 Cyl., AT, A/C, XLT Pkg. #6671A
Was \$14,485 NOW **\$13,495**



'94 FORD F150 4X2
302, V8, Auto., XLT, 39,000 Miles #7276A
Was \$15,999 NOW **\$15,199**



'94 F350 4X4
460, V8, Auto., XLT, Fiberglass Top, 20,000 Miles #P2367
Was \$25,999 NOW **\$24,999**



'94 FORD F250 S.C. 4X4
351, V8, Auto., XLT, Loaded, Only 24,000 Miles #P2401
Was \$25,999 NOW **\$24,999**



'93 TOYOTA PICKUP
4 Cyl., 5 Speed, Great Starter Truck #2244A
ONLY \$8,999



'93 FORD F250 4X4
351, V8, Auto., XLT, Only 31,000 Miles #P2398
Was \$22,999 NOW **\$20,999**

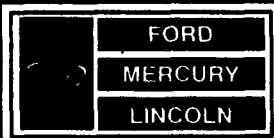


'93 FORD EXPLORER
Limited Edition, White, Only 24,000 Miles #PR2373
Was \$24,999 NOW **\$22,999**



'93 FORD AEROSTAR EXTENDED 3.0, V8, Auto., Dual Air, Only 23,000 Miles.
Was \$15,999 NOW **\$14,999**

Unless the Sheehy Emblem is on Your Car or Truck, . . . You Probably Paid Too Much!



SHEEHY LEBANON

-20th & CUMBERLAND STS. - RT. 422 WEST

9-9 DAILY, 9-5 SATURDAY • SHEEHY HOTLINE (717) 272-7671 OR 533-5293

PARTS DEPT. OPEN
DAILY 8-5
SAT 8-12
717-273-8168

Mystiques • Cougars • Continentals • Town Cars • 4x4s • Rangers