

91 S10 Long Bed Pick-Up Truck, V6, 5 Spd. Overdrive, PS, PB, 77,000 Miles, Excellent Condition \$5900 (717)865-4695.

'94 Chevy G2500 pickup 6.5 diesel, 4x4, 11,000 miles, 100,000 mile warranty, \$20,000. (610)255-4311 (610)255-4522

'92 Ford F250, 4x4, XLT Super cab, brilliant blue, like new, only 14,000 miles, 5 speed, V8, 460, PW, PDL, PS, PB, AC, AM/FM stereo cassette, bed liner, bug shield, new tires, sport wheel cover, \$18,500 firm Call Key 717-336-0860.

'95 Dodge Larmie SLT 2500, 4x4, 360 Magnum, auto, PS, PB, PW, PDL, cruise, tilt, air, 8,800 GVW, 8,000 miles w/balance of factory warranty, dark green & silver, like new, \$22,900 717-733-2873

TRAILERS SHIRK

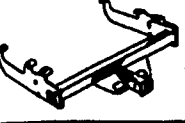

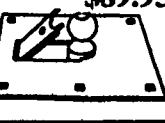





IN STOCK:

- 16 Ft. Utility 10,000 GVW
- 14 Ft. Utility 7,000 GVW
- 13 Ft. Livestock Trailer w/ Torflex Axles, 7,000 GVW

DANIEL B. SHIRK WELDING SHOP
Newmanstown, Leb. Co., PA
717-949-2652 Mon.-Fri. 7 to 5

1988 International S1954 Feed/Grain Truck:
DT466 Diesel 210 HP.; Power Steering; Air Brakes; 35,000 GVW; 15' Aluminum Dump Bed; Roll Tarps; Rear Auger; Blower; \$16,800 Will Separate!
Curry Supply Co.
Curryville, PA.
1-800-345-2829

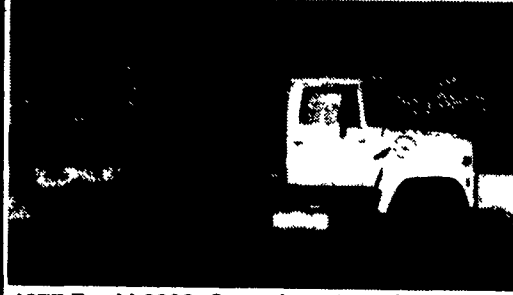
Warehouse Direct To You! Doc!

Trailer Hitches 	Brake Controls \$59.95 	Fold-down Gooseneck \$89.95 	Convert - a - Ball \$31.95 
Ball Mounts \$12.95 	"PLUG-IN" Simple Wiring Hook 	Pintle Hooks 5-50 Tons 	Elec. Plugs & Adapters 

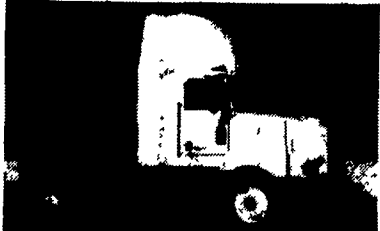
WEAVER DISTRIBUTING 1-800-WEAVER-D Free Catalog
RR2 Fredricksburg, PA 17026 1-800-933-3373



1981 Kenworth W900A, 36" slpr, Detroit 8V92 445HP, 13 sp. trans, 4.33 rears, Air Ride, STK #TC188716 \$8,900



1977 Ford L9000, Cummins 290, 9 Speed Trans., Hendrickson Beam Suspension, 3.70 Rears, Wet Line, PS, STK #TC008703 \$6,500



1989 Kenworth T400, Single Axle, Cummin L10-270 HP, 9 Speed Trans., 3.70 Rears, Air Ride Suspension, 4-Available \$21,900

Keystone Peterbilt, Inc.

1467 Manheim Pike • P.O. Box 4396 • Lancaster, PA 17604

1-800-243-2458



717-299-6630



1990 L.H.C. 8200-3406-350 Eng.; RTX 14609B Eng.; DS402 Air Ride Susps.



1987 PETERBILT 362-110"; 3406B-350 Eng.; RTO14613 Trans; DS402-3.70 R Axle; Peter Air Leaf Susp.



1989 PETERBILT; 379 490,000 approx miles, 63" Low Sleeper, 127" BBC, 3406 Eng (425) @ 2100, 485 HP, Jacobs Brake; RTO14715 Trans, 15 Spd, Reburn; Axle DS402, 40,000 Lb 3.70 Ratio



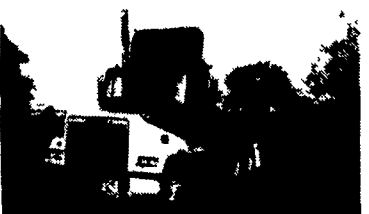
1988 PETERBILT 377-38"; 3406B-350 Eng.; RTO 14609B Trans.; DS402-4.33 R Axle, Air Ride Susp



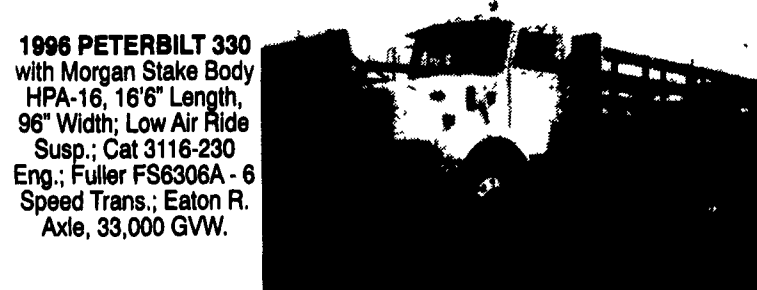
1989 PETERBILT MODEL 379 with 36" Walk-in Sleeper, Long Hood, Cummins Big Cam 4 350 H.P.; RTO14613 Speed Transmission, Sq. 100 Rear Axle 3.73



1984 MACK SUPERLINER REST RITE. RW5722; 3406-350 Jake Eng, Mack T2090 9 Speed Trans., Mack-34,000 R. Axle, Camel Back Susp



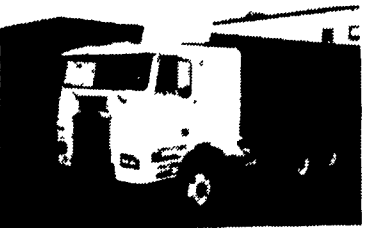
1988 Freightliner, FLC11264T; 3308-300 Eng; 9 Spd Trans; DS402-3.90 R Axle, 4 Spring Susp



1996 PETERBILT 330 with Morgan Stake Body HPA-16, 16'6" Length, 96" Width; Low Air Ride Susp.; Cat 3116-230 Eng.; Fuller FS6306A - 6 Speed Trans.; Eaton R. Axle, 33,000 GVW.

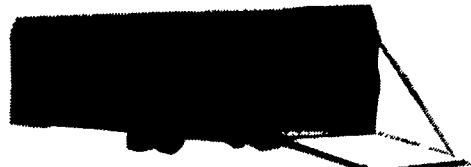


1990 PETERBILT 362-110" - 3406-425 Eng. RTO15618; DS402-3.55 R Axle, Air Ride Susp



1989 FRIEGLINER FLA966ST - 3406B-350 Eng; RTX14609B Trans; SQ100-4.10 R Axle, Air Ride Susp.

OCTOBER SALE



CAR CARRIERS

16 FT. \$1700
STANDARD FEATURES:
- Electric brakes all wheels
- Slide under ramps
OPTIONAL FEATURES:
- Hydraulic surge brakes.....\$400
SIZES UP TO 40 FT. AVAILABLE

RINGO HILLS FARM EQUIP., CO., INC.

1624 RT. 212, QUAKERTOWN, PA 18951
(610) 346-7340

FOR SALE

WellsCargo Trailer 48 Ft. Slope Deck With Ramps and Cargo Boxes, Some Rust But Otherwise Good Condition
Hiab Knuckle Boom Crane #070AW 36 Ft. Reach Can Be Truck Or Trailer Mounted, Good Condition
20 Ft. Trailer 16000# GVW With Hydraulic Loading And Unloading - Sliding Axle And Tilt Bed
DevilBiss Exhaust Fan 48" 25 Ft. of Stack

The Above Items Can Be Inspected At

MGS Inc.

178 Muddy Creek Rd., Denver, Pa.

Call 1-800-952-4228

or 717-336-7528

Frank Kirkpatrick

Lancaster County, Pennsylvania

E.M. KUTZ, INC.

USED EQUIPMENT SALE

Used Equipment:

Used 9' 2" Boss "V" Plow for 1989 GMC (old style) 1 Ton with Electric Power Unit.....\$2,200
Omaha Topper Body for Pickup with Heavy Duty Ladder Rack, Good Condition.....\$1,600
Gledhill 707 Drop Tailgate Spreader.....\$750
Diamond "V" Blade and Cylinders.....\$650
21' H.D. Platform with Winch.....\$600
14' H.D. Platform with Hoist, no Pump or Hinge\$675
Used Bartlett Hydraulic 5th Wheel, without Pump, As Is.....\$550
Used Slider 5th Wheels.....\$150
Obeco 1030-550 Twin Cylinder Conversion Hoist, without Pump.....\$675
'89 Chevrolet Pickup Bed, without Tailgate.....\$400
9' Steel Dump Body with Hoist...\$775
8' Steel Dump Body w/Hoist.....\$700
14' Steel Dump Body without Hoist.....\$800
1990 Ford Tractor with Wet Line.....\$850
Used Commercial C101 Pumps.\$100

NEW EQUIPMENT

Full Line Fisher Plows.....CALL
Poly Pickup Tailgate Spreaders - While They Last.....\$825
Gas Engine Air Flo and Henderson Slip-in 8' Spreaders in Stock, Unmounted.....\$2,875
All Used Equipment As Is

E.M. KUTZ, INC.

Reading, PA

610-775-3528

1994 Ford T-Bird LX, Black, V-6, AT, AMFMCAS, AC, PW, PL, CC, 56,267 Mi.....\$11,900
1992 Buick LeSabre Custom maroon, V-6, AT, AC, PW, PL, CC, 55,521 Mi.....\$10,900
1992 Ford Ranger 4x4 Cust., Black, 4 cyl, 5 sp, AMFMST, 67,356 Mi.....\$8,900
1991 Pontiac Bonneville LE, Blue, V-6, AT, AC, PW, PL, ES, CC, 56,088 Mi.....\$8,900
1991 Buick Park Avenue, 4 dr, Black, V-6, AT, AMFMCAS, AC, PW, PL, CC, 81,680 Mi.....\$8,800
1991 Plymouth Laser RS, 16v, White, 4 cl, 5 sp, AMFMCAS, AC, CC, 56,962 Mi.....\$8,800
1991 GMC Vandura Cargo, White, V-8, AT, AMFMST, AC, PL, CC, 83,572 Mi.....\$7,900
1990 Olds Cutlass Supreme, Blue/Gray, V-6, AT, AMFMCAS, AC, PW, PL, CC, 37,516 Mi.....\$7,900
1990 Ford Probe GT Turbo, White, 4 cl, 5 sp, AMFMCAS, CC, 44,187 Mi.....\$7,900
1988 Chevy Beauville, Blue/Gray, V-8, AT, AMFMCAS, AC, PW, PL, CC, 73,080 Mi.....\$6,900
1986 Ford Clubwagon XL, White, V-8, AT, AMFMST, 30,440 Mi.....\$6,600

Brubaker's Auto Sales

Myerstown, PA

717-866-5237