

**35 TRUCKS & TRAILERS**

**TRUCKS FOR SALE**

'93 Chevy Crew Cab w/Stahl Box  
'86 Chevy 30 Van  
'94 1500 Chevy Pick-up w/Extend Cab  
'90 GMC 2500 Vandura  
**1-800-422-4587**

**STOLTZFUS CINDER SPREADER**  
7 HP HONDA ENGINE W/REMOTE CONTROLS  
WILL FIT 1 TON TRUCK  
**\$800.00**  
CALL 717-445-4571 - ASK FOR RICH



1988 to 1994 Ford Cargo Vans. 5 to choose from. Completely serviced and guaranteed. Starting at \$6400.00.

**WEST YORK AUTO SALES**  
2575 W. Market St., York, PA  
**717-792-4577**

1988 Chevy Silverado, 3500 Duely, extended cab, 92,000 miles, AC, PS, PB, PW, Auto trans w/aux. auto cooler, gooseneck ball hitch w/electric controls, 454 w/27,000 miles on new motor, new dual exhaust and radiator. \$13,000 302-398-8058.

1988 F250 ext. cab, H.D., 4WD, 460 auto, air, 5th wheel, \$13,900 610/987-3789

1992 Ford F250, 4x4 XLT, turbo diesel, heavy duty, excellent 301/264-4769

1995 Dodge 2500 pickup, V10, 4x4, Laramie SLT towing package, bedliner, \$23,900 717-962-3177

72 Ford F900 dump truck, 9' dump, 534 5+2 AB, good condition, \$2500 717/284-4139

'73 COE White, 13 speed, tandem, 350 Cummins, 10x22 rubber, 40' Great Dane flat w/sides, 10x20 rubber chains and binders Airville 717-862-3466

'73 White Road Boss super 250 Cummings, 10sp, runs well, March inspection, 27' Trailco grain trailer \$10,500 obo, 717/872 7623 or 872-4190

'76 Ford F600 20' flat bed, solid cab, exc tires, tags, runs good, \$800 610/932-4019

'77 Chevy C30 1-ton stake body dump, 350, 4 speed, 65,000 miles, 1 owner, very good condition, snowplow available, asking \$4800 717-938-1954

'89 Ford F250, 3/4 ton, 351 EFI, auto, PS, PB, AM-FM cassette, 8,600 GVW, dark blue, excellent condition, \$8,900 717-733-2873

90 Dodge LE 250, 3/4 ton, 318 EFI, auto, PS, PB, PW, PDL, cruise, tilt, air, AM-FM, 7,500 GVW, 2 tone brown, \$9,600 717-733-2873

'92 Chevy Tahoe S10, ext cab, V6, 5 spd, PS, PB, AM-FM cassette stereo, 29,000 one owner miles, red & silver, like new, \$8,975 717-733-2873

'92 Ford F150 Super Cab, 300 EFI, 5 spd, PS, PB, AM-FM, dual tanks, 6,250 GVW, 45,000 miles, red, excellent condition, \$11,500 717-733-2873

1987 GMC General Setback Axle, 350 HP, Cat 3406 "B" Air Bag, Air Ride, 4000 Mi. On In Frame Walkin Sleeper, 9 Speed, Fuller Sliding 5th Wheel, Double Frame, Wet Line New Drums and Brakes, New Bendix, Air Dryer Wet Line, Two 150 Aluminum Fuel Tanks, No Recaps, Low Profile Radials, All Records .From New, Double Frame \$30,000  
**(908) 536-1390**

**DUMP TRAILERS**  
Self-Contained  
Removable Sides  
Electric Brakes



Size	GVW	Price
6x10	7000#	\$3199
6x10	10000#	\$3485
7x12	10000#	\$4500

Ringo Hill Farms Equipment Co., Inc.  
1621 Route 712 Quakertown, PA 18951  
Phone (610) 346-7310 Fax (610) 346-8011

**LESHER Mack SALES & SERVICE**

27th & Cumberland St. Lebanon, Pa 17042  
Route 422 West



(8) 1990 Mack CH612; EM6-250L; T2050; 5 Spd.; 12 Frt., 23 Rear Axles; 4:88 Ratio; 139' W.B.; 63 Gal. St. Tanks; Spoked 275/80R 22.5's; PS; No AC.

(2) 1987 MH 613 Mack 350; T2090 9-Speed, Camelback Suspension, 4.17 Ratio

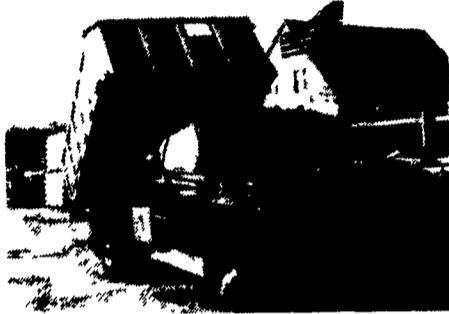


1-New MS 200P, Non CDL Chassis, 26,000 GVW

**PLUS MUCH MORE 717-273-4535**



1980 Magirus (Iveco)  
Cab & Chassis, 27,000 GVW \$2,500  
CURRY SUPPLY CO., Curryville, PA  
1-800-345-2829



**8'W Eby Aluminum Dump Bed,**  
9'L w/30' High Removable Sides  
Office **610-347-0688**

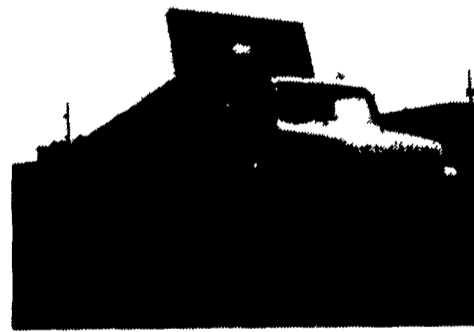
**'For Sale - R Model Mack**



Damaged Cab & Fire Wall, Rebuilt 300 Mack Engine, Rebuilt Fuel Injection Pump, New Radiator - Wetline, Spicer Trans - Twin Screw Good Rubber  
**Call 410-778-2372 Between 8 - 4 P.M.**



82 International Tri-Axle Dump, 350 Cat. 13-Spd, 44,000 Rears, Double Frame, AC, 19 1/2 Aluminum Body w/Liner & Roll Tarp \$23,500  
**717/529-2512**  
No Sunday Calls



**1984 Int Model 2155**  
Engine DT466, 210 HP, 34,000 GVW, Air Brakes, 18 Ft. Steel Dump, 5 Speed Trans., 2 Speed Rear, 81,000 Miles  
**\$14,500**  
**717-658-2368**



**N12 Volvo**  
350 Engine, 8 Speed, 18F 44R, 5000 Gallon, Posi-Lock Rears, A/C  
**(717) 733-7226**



**FOR SALE**  
25 Ton Lowboy 16' Level Deck, Good Tires, Very Straight Trailer, 108" Wide, Air Brakes, Berks  
**\$2,800 obo**  
— 610-488-7155 or 610-488-7658 —



**INTERNATIONAL 6x6 BRIDGE TRANSPORTING STAKE BODY TRUCKS**

Front Winch, PS, Air Brake, 1400/20 Tires, 21 ft. Bed with removable steel racks, Continental 6 cyl. engine. LIKE NEW 600-2,500 Miles. Excellent for off road heavy duty cargo transporting with their all wheel drive and ability to climb a maximum grade of 70 degrees. Double Frame. A must for every farmer.  
**\$7,500 to \$10,500**  
**(814) 834-1018 St. Marys, PA**

**LEFEVER BROS. CHEVROLET GEO.**

**CHEVY TRUCKS** YOUR DIRECT LINE TO GENUINE GM PARTS

**(800) 533-3837**

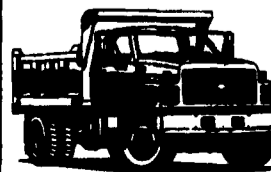
When you call the number listed above, you'll reach our wholesale parts specialists, who can help you keep your GM repair work moving quickly.

Ask about:

- Specializing in GM Medium Duty Trucks, Current and Obsolete.
- \$500,000 Parts Inventory.
- Parts Locator for Those Hard to Find Items.
- We Ship Anywhere, Local Delivery Available.
- Experienced, Knowledgeable Personnel.

Mon., Tues., Thurs., Fri. 7:30 a.m.-4:30 p.m. **(717) 432-9697**  
Weds. 7:30 a.m.-8:30 p.m. Quality Dealer Since 1921  
Major Credit Cards Accepted 406 U.S. Rt. 15, Dillsburg, PA 17019

**GM Goodwrench Service**



**Kodak Chevy Trucks CAT DIESEL POWER**