

Beaver County Forms Farmland Preservation Board

Long Is New Member

HARRISBURG (Dauphin Co.)—Beaver County has become the 38th county in the commonwealth to form a county Farmland Preservation Board, according to Agriculture Secretary Charles C. Brosius.

If the county's farmland preservation program is approved by the state board, the Beaver County Board will be able to begin accepting applications from farmers to preserve their farms for future agricultural use.

"Protecting farmlands is one way to help ensure the continuing stability and strengthening of our state's leading industry," said Brosius, who chairs the board.

"Now that the Beaver County commissioners have officially formed a farmland preservation board, they can develop a county-wide program that reflects local priorities."

The Farmland Protection Program was initiated in 1989 with a \$100 million bond issue approved by Pennsylvania voters. The program allows the state and counties to purchase development rights—referred to as easements—to guarantee that farms will remain as agricultural land.

All counties except Philadelphia are eligible to participate in the program. Participation is voluntary, and county officials decide the pace and size of their programs.

Participating counties adopt a resolution or other official action to certify county participation and authorize a board to administer the program. That board is composed of either five, seven, or nine members who are appointed to three-year terms.

Counties then submit their programs to the State Farmland Protection Board to be considered for inclusion in the state program, which makes them eligible for state funding for easement purchases.

County boards adopt written rules and regulations for easement purchases, receive easement purchase applications from landowners, execute sales agreements, purchase county-owned easements and monitor purchased easements to ensure compliance with the program's regulations.

In addition to using grant funds allocated by the state to purchase easements, counties may also appropriate local funds.

More than 555 farms in 31 counties have joined the program or had easements approved, protecting 69,463 acres of farmland. Since January 1, easement purchases have been approved for 8,722 acres on 72 farms in 24 counties.

ANNAPOLIS, Md. — Lynn R. Shuyler, a leader in the field of agricultural engineering, will retire this fall from the U.S. Environmental Protection Agency's (EPA) Chesapeake Bay Program Office. Shuyler's 30 years of national and international experience includes:

- Coordinated the nonpoint source program for the Chesapeake Bay basin. This program is aimed at reducing pollution carried to the Bay through ground water and stormwater runoff. It is considered a national model; Annapolis, Maryland, 1985-1995.
- Managed the EPA's national research program for controlling pollution from animal production facilities; Ada, Oklahoma, 1971-1985.

ST. JOSEPH, Mo.—Hope Long, New Providence, Pa., is a new junior member of the American Angus Association, reported Dick Spader, executive vice president of the national organization.

Junior members of the association are eligible to register cattle in the American Angus Association and take part in association sponsored shows and other national and regional events.

The American Angus Association has more than 29,000 active adult and junior members.

BUY, SELL, TRADE OR RENT THROUGH THE
CLASSIFIED ADS
PHONE: 717-698-1184 or 717-394-3047
FAX 717-723-8056
Mon., Tues., Wed., Fri. 8 AM to 5 PM; Thurs. 7 AM to 6 PM

Engineer To Retire

Provided irrigation solutions for Kansas farmers through the Kansas cooperative Extension Service; University of Kansas, Manhattan, Kansas; 1965-1971.

Guided management techniques for animal waste in Europe and Asia; 1971-1985.

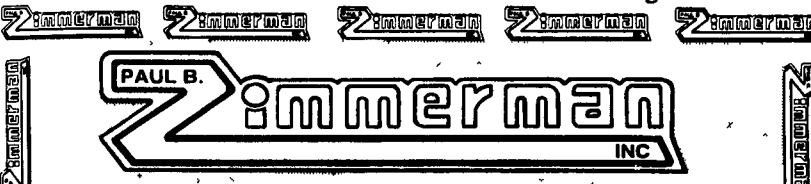
"Looking back on my years with the Bay Program, I am really pleased to see us as far along as we are now," said Shuyler. "Ten years ago I really questioned whether we could make enough difference in 10 years to see results in the Bay's plants and animals and water quality, but we're beginning to see that today. We've got a long way to go, but we've come a long way from where we started."

Shuyler joined the Chesapeake Bay Program in 1985, two years after the multi-governmental partnership was formed to lead the restoration of the Bay. The Chesapeake Bay Program determined that an overabundance of the nutrients nitrogen and phosphorus was a major factor in the Bay's decline.

"The major challenge I saw in coming to the Chesapeake Bay Program was the need for people living in the Bay basin to feel ownership of the Bay's problems and participate in planning solutions," said Shuyler. His background with the Kansas Cooperative Extension Service gave him a strong understanding of the need for cooperation and communication on many levels.

As the Bay Program's nonpoint source coordinator, Shuyler has been at the hub of this effort, assisting with the development of the nonpoint source control programs in Maryland, Pennsylvania, Virginia and the District of Columbia, and coordinating the needs of these programs with the 13 cooperating federal agencies in the Chesapeake Bay Basin.

"We've seen a big move forward in fostering a sense of ownership in the basin," said Shuyler. "One of the real pleasures of working with the Bay Program is the involvement of so many jurisdictions and organizations — it's the free flow of ideas and information that make the partnerships work. It's been my job to find things that work well and provide the opportunity for others to see them and incorporate them into their own programs."



HEAVY DUTY ROUND BALE MOVERS

FEATURING: Kverneland forged steel spear electrically heat treated

3 POINT HITCH BALE MOVERS

3 PT 2502 DOUBLE SPEAR
• Small diameter spear for easy penetration
The Same Unit Can Be Used With One Spear For Center Of Bale Or Two Spears For Under Bale

COMBINATION BALE MOVER

• Heavy duty structure designed to fit any 3 pt. hitch or loader boom with one or two cylinders
• Small diameter spear for easy penetration
• 2500 lb. capacity
The Same Unit Can Be Used With One Spear For Center Of Bale Or Two Spears For Under Bale.

COM 2502

STANDARD DUTY BALE MOVERS

3 POINT HITCH BALE MOVERS

2 PT.-1000 1000 Lb. Capacity	3 Pt.-1252 Double Spear 1250 Lb. Capacity
---------------------------------	--

The Same Unit Can Be Used With One Spear For Center Of Bale Or Two Spears For Under Bale.

LOADER BUCKET MOUNTED BALE MOVERS

PLF-4000 FRONT END LOADER FORKS
• Mounts to loader bucket in minutes
• 1500 lb. capacity
• 24" high load guard

SSL-2500 SINGLE SPEAR BALE MOVER
• Mounts to loader bucket in minutes
• Complete with chain and binder
• 1500 lb. capacity

HAY BALE FEEDERS

- Feed big round & red. bales or stacks
- ½" formed steel channel and 1" sch. 40 pipe, all welded construction
- 14 ga. sheet metal around bottom helps reduce hay loss

PAUL B. ZIMMERMAN, INC.

Call or Write For Additional Information And Your Nearest Dealer

Hours Mon. Thru Fri. 7 to 5

295 Woodcorner Rd. Lititz, PA 17543-9165
1 Mile West of Ephrata
717-738-7365

Mahoning Outdoor Furnaces

Cut Your Heating Costs With Our Outdoor Furnace

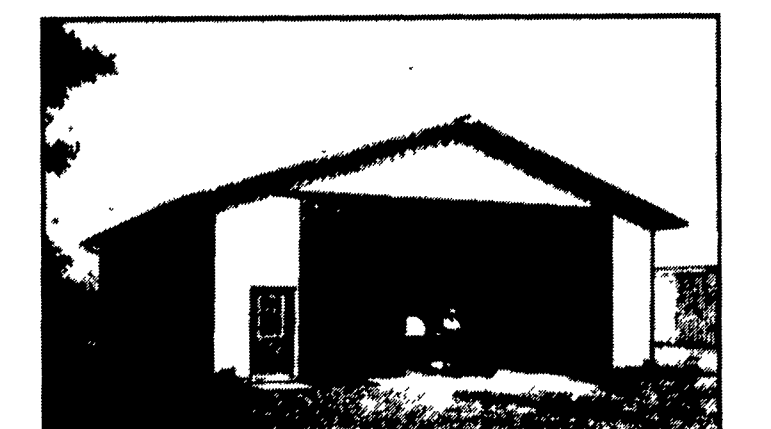
- Standard Model Burns Wood, Coal or Wood by-products
- Multi-Fuel Model Burns Wood, Coal, Oil or Gas
- Corning Catalytic Combustor Option Available on all Models

Clyde K. Alderfer
Box 246, RD #1
Mt. Pleasant Mills, PA 17853
(717) 539-8456

Adapts to any existing heat system
Installation & Accessories Available

MORTON BUILDINGS

Since 1903



Check These Warranty Features:

- **50-Year Protection** Against snow-load damage to the structure with no weight limit
- **50-Year Protection** Against decay or insect attack on preservative treated columns and preservative treated lumber.
- **20-Year Protection** Against red rust including damage caused by atmospheric pollutants.
- **10-Year Protection** Against wind load damage to our optional AlumaSteel® sliding doors with no wind velocity limit.
- **5-Year Protection** Against wind load damage to the structure with no wind velocity limit.

All warranties include materials and labor and are not prorated.

717/624-3331
3368 York Rd., Gettysburg, PA 17325

908/454-7900
P.O. Box 126, Phillipsburg, NJ 08801

Call or write today for more information 1-800-447-7436
Illinois only, call 1-800-426-6686