

Public Auction Register

Closing Date Monday 5:00 P.M.
of each week's publication

**CONSIGNMENT
SALE**

**Sat., Oct. 14, 1995
9:00 AM**

Consignments Welcome
Please Call by Sept. 30th to Have
Items Listed

Tractors, Farm Equip., Trucks
Lawn Equip., Building Materials

Location: **LEBANON VALLEY
LIVESTOCK GROUNDS**
(717) 866-5783 DAVE
(717) 933-8127 JEFF



**PUBLIC
AUCTION**

Estate of
Boyd D. Snyder

**Sat., Sept. 30, 1995
9:00 A.M.**

Location: 1 mile west of Pitman, PA, turn
north, go 1 mile to sale site. From Hegins
go north on Route 125 6 miles, at Masser's
Storage turn east, go 1 mile, turn north, go
1 mile to sale site. Direction arrows posted
day of auction.

PERSONAL PROPERTY

Green 2 Dr. Ref. Freezer; Frigidaire; Elec. Stove;
Table w/4 Chairs & Magic Chef Microwave; Sofa;
Chest of Drawers; Chest Freezer; Wardrobe -
Dresser; Clothes Tree; End Tables; Singer Treadle
Sewing Machine; Electrolux Sweeper; Metal Bed;
Quilt Patterns; Pressed & Pattern Glass; Shirley
Temple Pitcher; Brass Bucket; Slaw Board; Comic
Books from 60's; 2 Drawer File Cabinet; Crocks to
5 Gal; Hand Meat Saw; Plus Everyday Household
Items; Hohner Accordion Tango IV w/Case; Marx
Elec. Train; Etc.

Guns and Coins Sell at 11:00 a.m.

Guns: Sterlingworth 12 Ga. Double Barrel; Spring-
field 12 Ga. Double Barrel; Springfield Model 15
22 Single Shot; Marlin Model 92 32 Long R.F.
Octagon Barrel; Win. Model 94 30 W.C.F.

Coins: Silver Dollars 1889-90-99-1901; Half Dol-
lars 1917-36-41-42-43-44-46-49-52-56-58; Quar-
ters - Dimes - Nickels - 1844 Large Cent; Etc.,
Pocket Watches; Elgin w/Train on Case; (2) Stan-
dard Pocket Watches.

**FARM MACHINERY -
IRRIGATION PUMP**

Tractors - Farm Machinery
Approximately 12:30

Ford 8N Tractor; Farmall H (No Electric Start or
Hydraulic), Good Tin; Woods 5' 3 Pt. Rotary
Mower; 3 Pt. 2 Bot. Plow; 3 Pt. Cultivator; 3 Pt.
Sprayer; Semi Mounted Sickle Bar Mower; 11 Hoe
Drill; Minneapolis Moline 1 Row Corn Picker; (2)
2 Wheel Trailers; Plastic Layer; Corn Planter; **Gor-
man Rupp 4" Irrigation Pump with 9 HP Gas
Engine;** (23) 20'4" Pcs. Irrigation Pipe; (32) 20' 3"
Pcs. Irrigation Pipe; (7) Sprinklers; Platform
Scale; 2 Wheel Trailers; Wheel Weights; Forks -
Shovels; Wrenches; Misc. Hand Carpenter Tools;
Poulan 306 A Chainsaw 20" Bar; Craftsman
Chainsaw; Misc. Chain Saw Motors & Parts;
Craftsman 4" Jointer; Duro Bench Saw; Chicago
Grinders; Powercraft 7" Skil Saw; 1/2" & 1/4"
Elec. Drills; Sabre Saw; Homelite Gas Weedwack-
er; (2) Butcher Kettles; (2) Sausage Stuffers;
Butcher Bench; 1972 Viking Snowmobile 440;
Chevy Luv for Parts; Etc.

Terms: Cash or PA Check

Lunch

Executrix: Brenda L. Long

Attorney: Vincent B. Makowski

MARK J. JONES AUCTIONEER

Phone (717) 286-0052

Lic. #AU 1595-L

Jeff Dunkelberger

Lic. #AU 3043-L



SAT. OCT. 28 - 1PM 80
Acre Mifflin County Poultry
Farm, Located Approx. 15
Mi. West of Lewistown Just
off Rt. 22-522. Follow Sale
Signs from Rt. 22-522 Onto
Rt. 103 and Turn Right onto
Kansas Rd., 1 Mi. to Prop-
erty. Owner: Stuart M.

Woods. Long's Auction
Service.

TUES. OCT. 31 - 8PM
Feeder Cattle Sale. Carlisle
Livestock Market, Inc., Exit
12 off I-81 turn South - then
left onto Alexander Spring
Rd. 249-4511.

NOVEMBER

WED. NOV. 1 - 6:30PM
Winross trucks & toys. A&C
Differbach Auction, Inc.
100 W. Jackson St., New
Holland, Pa.

WED. NOV. 1 - 7:30PM
Feeder Cattle Sale, Hager-
stown, MD Four States
Livestock Sales.

FRI. NOV. 3 - Fall Heifer
Sale. Belleville Livestock
Market, Inc.

SAT. NOV. 4 - 8:30AM Toy
Sale held at the Lisburn
Comm. Fire House Pavi-
lion. If traveling on I-83 N.

or S use exit 18, take Rt.
114 W for 5 miles. Marion
Capp, owner. Little Ike
Eichelberger, auct.

**Public
Auction**

**MONDAY:
SEPTEMBER 25, 1995
6:00 P.M.**

**WINROSS AND HESS TRUCK COLLECTION - TOYS
LARGE CAP COLLECTION**

LOCATION: Hummelstown Fire Hall, E. Main Street, Hummelstown, Dauphin Co., Pa.
130+ Winross trucks inc. Hershey, Racing, Farm machinery, local, over the road;
Hess trucks; Nylint; Ertl; Corgi Toy; Texaco; Models of Yester Year, etc. Collection of
over 450 caps of a wide interest and variety.

Doors open at 4:30 for inspection. Cash or approved check; Food & toilet facilities. Winross cat-
alog available auction day.



138 College Avenue
Annville, Pa 17003
(717) 867-1809

**Auction for
BRUCE &
JEAN MILLER**

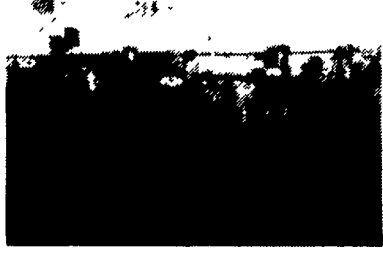
**BUSINESS LIQUIDATION AUCTION
BASUR TOOL & DIE CO.
1205 W. STATE STREET
NEW CASTLE, PA**

Located: Approx. 1-1/2 miles East of the intersection of Rts. 422, 60 and 224 on Rt. 224. Follow Huey Auction signs to auction.

SATURDAY, OCTOBER 7, 1995 STARTING AT 9:00 A.M.

**PRIME COMMERCIAL REAL ESTATE - HIGH QUALITY MACHINE SHOP
EQUIPMENT - FORKLIFT - TOOLING - AND MUCH MORE!**

Real Estate: (to be offered approx. 12:30 p.m. - sold subject to confirmation) consisting of lot with well maintained 44' x 110' cement
block building w/new roof, 3 phase electric, natural gas heating. Zoned commercial/industrial, large paved parking area.



Equipment: Robins & Meyers surface grinder, 1200 rpm, 7-1/2 hp; Brown & Sharpe #5 sur-
face grinder w/magnetic chuck & ac/dc converters; Denver Turret lathe w/3 jaw chuck, 36"
centers, 20" swing; (2) Monarch lathes w/quick change, 20" swing, 32" centers; Warner
Swasey #2 Turret lathe w/10" swing, 3 jaw chuck; (2) Bridgeport mills w/9" x 32" tables;
Bridgeport w/9" x 42" table; Cincinatti 4' radial arm drill press w/reverse; (2) model HRP63
Elox EDM's w/20" x 10" tables; Elox NPSD60 power supply; Cincinatti model 2ML milling
machine; Kalamazoo P44 horizontal band saw; Wellsaw 600 horizontal band saw; Grob 18"
x 24" band saws w/blade welders; 12" power hack saw; (2) Troyke R15 rotating table & 1
R12 rotating table; (2) Lobo model 3075 dbl. end polishers; 20 ton press; Steptoe milling
machine; Haskins tapper; Duracraft 3/4" bench model drill press; American jigsaw; Delta 14"
band saw; Clark 7" surface grinder; Delta floor model drill press tapered shank; American &
Oliver filer; Rockwell bench model drill press; 12" band saw; Rockwell 6" belt sander; Day-
ton dbl. end grinder; hvy. duty dbl. end pedestal grinder; (2) coilers (1) w/motor; (2) single-
3 phase converter; small natural gas generator; Ingersoll Rand 7-1/2 hp. air compressor;
Gardner Denver 2 hp. air compressor; 12" hvy. duty power hack saw; #3 tapered shank floor
model drill press; Master speed ranger gear reducer; Lincoln welder AC/DC (400 amp); fork
lift dump hopper; Dayton 1/3 hp. dbl. end pedestal grinder; Baldor 3 hp dbl. end grinder;
Prosser dbl. end cribide tool grinder; Mag. drill; Troyker rotating table; Illinois filer; Harris
acetylene set w/cart-tank-hoses-gauges-torches; 5"x24"x36" granite layout block on stand;
18x24x3 layout block; Baldor dbl. end grinder; Dividing/cutting heads; transformer 30KVA-
110220; balancing unit; mag. chucks; swivel, bench, other vises; tooling for mills (Cin. &
Bridgeport machines); cutters; rotating tables; (3) demagnetizers; steady rests; 3 & 4 jaw
chucks; much tooling & tool holders; tool cabinets; 3 machinery rollers; tapered shank drills;
pin gauges (from 61/1000-1/4"); SS/Nickle bar stock; new polishing cylinders; Starrett 6"-
12" mic's & all types/sizes; Lassy (tapper) machine; work bench w/2 hvy. duty vises; punch
sets-letters & numbers; grinding wheels; banding outfit-stretchers, banders, etc.; black light;
ZYG10; mills/straight & tapered shanks/drill bits; tapes; end mills; calipers; black smith
tools; black smith vise; metal cabinets & cupboards; platform scale; Dayton space heater;
engine hoist (3 ton); C clamps; hammers; slings; wrenches; nuts, bolts; 35 ton EnerPac hyd.
jack; cutting oil; stands; switch boxes; misc. elec. motors; inside mics & scribes; New Age
metal hardness tester; digital tester; taps/dies; metal office desks & chairs; drafting table; fan;
filing cabinets; Royal EZ Vue calculator; shop vacs; Thomas register 1989's; Brother AX-350
typewriter; plus more!

OWNER: JOHN FORSBERG

**PREVIEW & PRE-REGISTRATION FRIDAY, OCTOBER 6 FROM
9:00 A.M.-4:00 P.M.**

AUCTIONEER'S NOTE: This machinery in very good operating condition & has been
in operation up until September 1, 1995.

TERMS ON REAL ESTATE: 10% down day of sale (NON-REFUNDABLE), balance
in 45 days or upon delivery of deed.

TERMS: Cash or check w/proper I.D.

Lunch & restrooms available.

**DON'T MISS THIS OPPORTUNITY TO PURCHASE THIS HIGHLY PRODUCTIVE
PROPERTY OR IN A FAST GROWING AREA. EXCELLENT PROSPECTIVE FOR
RENTAL PROPERTY OR INVESTMENT.**

AUCTIONEERS

JOHN R. HUEY II, CAI, PAA, NAA

AU-001588-L

Slippery Rock, PA 16057



SUE ANN WEIDNER, PAA AU-001781-L

(412)794-6044