

Public Auction Register

Closing Date Monday 5:00 P.M.
of each week's publication

SAT. OCT. 14 - Real Estate, Household Goods. 93 Park St., Reamstown. Auction by Nellie E. Bixler Estate. Aaron E. Martin Auction Service.

SAT. OCT. 14 - 9AM 19 acre farm, real estate & personal property, 407 W. Linden St., Richland, Pa. By: Elmer P. & Martha G. Weaver. Nelson L. Eber-sole, auct.

SAT. OCT. 14 - 11AM 133 Acre Farm, Household Goods, Farm Machinery, Auto. Located 6 Mi. East of Lisbon, OH on St. Rt. 154 to Pine Hollow Road then South East 3 1/2 Mi. to Farm or 4 Mi. North of East Liverpool, OH on SR 11 to the Rogers, (Rt. 7) Exit Then Further North 5 Mi. to Pine Hollow Road then West 1 Mi. to Farm. Charles Sienerth Trustee Jim Baer Auctioneer & Realty.

SAT. OCT. 14 - 9AM 64 Acre Farm, Household Goods, Tools, Antiques, Guns, Old Iron Lawn Fencing. Located 3 Mi. North of Snyder's, 6 Mi. South of Tamaqua on Rt. 309. Take Mush Dahl Rd., West 1/2 Mi. to Auction. Schuylkill County, PA. Look for Auction Signs. Estate of Bessie Fritz. Robert R. Amer.

SAT. OCT. 14 - 9AM At 2 West Orange St., Litz, Pa. For Chapel Properties, Ed Gericola. Witman Aucts., Inc.

SAT. OCT. 14 - 9AM Consignment sale. Tractors, farm equip, trucks, lawn equip, building materials. Lebanon Valley Livestock Grounds.

SAT. OCT. 14 - 9AM Personal property of Gene Henninger, Gary Henninger & Gail Henninger Ingram. School St. Spring Mills, Pa. Centre Co. Leon J. Smith Jr. & Son, aucts.

SAT. OCT. 14 - 9AM Fine Antique Collection from the Antique Shop & Private Collection of Renaud & Louise Devity. Sale to be held at the Horst Auction Center Located at the Corner of Rt. 322 & Durlach Rd., (Approx. 2 1/2 Mi. West of Ephrata) Ephrata, Lanc. Co., PA. Sale for Renaud & Louise Devity. T. Glenn Horst Aucts.

SAT. OCT. 14 - 9AM North of Exit #1 of I-78, antiques, collectibles, household. Deets. Dwight D. Miller, auct.

SAT. OCT. 14 - 9AM Mahantongo Valley Farm, Farm Equipment, Antiques, Collectibles, Guns. Midway Between Klingers town and Pitman Next to the Mahantongo Valley Elementary School. From I-81, Exit 34, Take Rt. 25 West to Hegins, Turn Right onto Rt. 125 Cross Over Mahantongo Mountain and go to 1st Stop Sign at Jack's Spot Cafe, Turn Left Continue 3 Mi. to Sale Site. Howard S. Brooks, Harry R. Brooks & Hazel B. Aspinwall Owners. Mike Deibert and George Deibert Aucts.

SAT. OCT. 14 - 9AM Real estate, household goods, antiques & riding mower. Midway between Hinkle town & Blue Ball, turn N. off Rt. 322 on Kurtz Rd. sale at 139 Kurtz Rd., Earl Twp. Lanc. Co., Pa. Edna S. Kurtz Trust Estate. Furniture & Appliances Aaron H. Kurtz Estate. Robert E. & Jeffrey R. Martin, aucts.

SAT. OCT. 14 - 9AM Real Estate, Tools, Antiques, Household Goods. Directions: Take Rt. 272 North From Ephrata to Reamstown, Turn Right at Traffic Light onto Church St., Go to Park St Turn Left to property on Right. Eat Cocalico Twp., Lanc. Co., PA. Auction by: Nellie E. Bixler Est. Aaron E. Martin Auction Service.

SAT. OCT. 14 - 9:30AM Real Estate, Vehicles, Collectible Cars, Other Items. Olanta, PA., Clearfield County. Located 6 Mi. South of Curwensville, PA. Along Rt. 453-Between Curwensville & Madera. When Getting Off Rt. 80 at Clearfield Exit Take Rt. 879 Toward Curwensville and Watch for Rt. 453 South. When Coming on Rt. 322 go to Philipsburg, Take Rt. 53 South to Madera, Watch for 453 North to Auction. Sale by: Mr. & Mrs. John Beirlair. Ron J. & Ron S. Gilligan Aucts.



PUBLIC AUCTION

MCNEAL'S AUCTION HOUSE
FIREHOUSE ROAD
GRANTVILLE, PA

Mon., Sept. 25, 1995

6:00 P.M.

DIRECTIONS: From Harrisburg, PA Take I-81 North to the Grantville Exit #28. Turn Left Going Towards the Penn National Race Track, on Rt. 743. At the Penn National South Gate, Turn Right onto Fox Run Road. 3rd Road Right to Firehouse Road, 4th Building on the Left. Signs Posted.

RIFLES

J.R. Shuler Over & Under Swiveling Breech Cap & Ball Rifle (Made in Liverpool PA., Perry Co.), Buffalo Bill Commemorative Mod. 94 30/30, Springfield Mod. 1884 45/70 Cal., Remington Mod. 14 32 Cal. Pump, Remington Mod. 722 In 222 Rem. Cal. with V9 3x9 Scope, Remington 514 Mod. 22 Cal., Remington Sportsman 78 270 Cal., Remington Mod. 700 BDL 243 Cal., Marlin Mod. 800 22 Cal., Weatherby Vanguard VGX 300 Win. Mag., Sako Hunter 30-06, Remington Mod. 572 22 Cal., Remington Mod. 7 7MM08 with 3x9 Redfield Scope, Marlin Mod. 81 22 Cal Lr, and a Savage Mod. 5 22 Cal Lr.

SHOT GUNS

Remington 870 Ex Combo with 3 Barrels 12 Ga., Franchi AL 48 20 Ga., Stevens Savage 311E Double Barrel 12 Ga., Spesco 151 20 Ga., German Mauser "Geco" 12 Ga. Bolt Action, Nickle Steel Mod. 12 12 Ga. with Poly Chike, and an Ithica Mod. 37 Featherweight 12 Ga. with Vent Rib.

BLACK POWDER

Thompson/Center Pa. Hunter 50 Cal. Rifle, Thompson Center New Englander 12 Ga. Shot Gun, and a Thompson/Center Hawken 50 Cal Rifle.

HAND GUNS

New England Arms Mod. R73 32 H&R Mag, Colt Trooper MK III 22 Cal., Colt Tropper MKIII .357 Cal., Smith & Wesson Mod. 629-3 44 Mag., 2 Raven Mod. MP-25 ACP (1 Chrome), Thompson/Center Contender with 223 & 45 Colt & 410 Barrels, H & R 22 Cal Rim Fire, H & R 32 S & W, Taurus 22 Cal Long Rifle 6 In. Barrel Revolver, Star 22 Cal Mod. F Semi Auto Pistol, Ruger Single Six 22 Mag Revolver with 6 1/2 In. Barrel, Astra Mod 1911 7.65 Semi Auto Pistol, and a Stey R/N Pieper Patent 25 Auto.

MISC. ITEMS

Old Turkey Calls, Holsters, and 5 Pocket Knives.

PATCHES 7 DECALS

Game Commission Patches & Decals from the 1980's and 1990's, Smokey the Bear Patches, Middle Creek & Pymatuning Decals and Fish & Game Club Patches.

HUNTING LICENSES

1949 & 1950's & 1963 Pa. Non-Resident Hunting Licenses, Sr. Resident Hunter Licenses from the 1980's, Adult Resident Hunter Licenses from the 1960's, 1970's & 1980's, Pa. Resident Hunter Licenses from 1940's, 1950's & 1960's, 1976 & 1982 Military Doe Licenses, Doe License From 1980's & 1990's (Various Counties), 1932, 1934 & 1935 Metal Licenses from Co. 21, and a 1934 Pa. Special Issue Hunting License.

MISC.

Fish & Game Association Badges, Pa. Forest Fire Warden Badge, and Hunting Regulations from 1950-51.

COINS

Approx. 35 Lots: Large Cents, V-Nickels, Barber Dimes, Quarters, Half Dollars, Silver Dollars, and Paper Money.

NOTE: Order of Auction - Starting with the Coins at 6:00 P.M., Followed by the Hunting Licenses, Patches & Decals and then the Guns.
TERMS: Cash or Approved Checks. No Out of State Checks. All Merchandise may be Inspected the Day of the Sale. Doors Open at 4:00 P.M.

AUCTIONEERS:

Richard and Rick McNeal
Lic #s AU-001380-L and
AU-002188-L
Phone 717-545-5911 or 717-469-7599

PUBLIC REAL ESTATE AUCTION DAY CARE CENTER FACILITIES SAT. SEPT. 30, 1995 12:00 NOON

Located: 400 Race St., Pottsville, Pa., Sch. Co. Near Court House (Formerly Race St. School).

"GOOD INVESTMENT PROPERTY"

Real Estate consists of a 2-story brick bldg. w/front & rear entrances. 4 Lge. Rms. w/toilet facilities, oil fired hot water w/radiators, city water & sewer, 3 yr. old roof, bldg. in good cond., bldg. presently able to accomodate up to approx. 75 toddlers.

"SOLD w/RESERVE"

Auct. Note: Present Day Care management has occupied the bldg. for approx. 15 yrs. & would be willing to stay for next owner. Other uses in bldg. possible w/this set-up. Possible owner financing considered. "Rare opportunity."

OPEN HOUSE

SUNDAY SEPT. 17, 1995, 1 to 4 PM APPOINTMENTS THEREAFTER CALL AUCT. (610) 562-4286 or (717) 943-2108

Terms: 10% Dn day of auction, bal. within 45 days. Cash or good Pa. cks. only with current bank letter of credit.

Eugene G. Klinger Auct. Service
Hamburg, Pa. (610) 562-4286
Lic. No. AU-002138-L

REAL ESTATE AUCTION

94 ACRES FARMLAND & MOUNTAINLAND
R.D. #3, PINE GROVE, PA.
SAT., NOV. 18, 1995
NOON

From traffic light in Pine Grove, travel East on Rt. 443 for five miles or from Schuylkill Haven, travel West on Rt. 443 for 8.3 miles and turn South on Flat Hill Rd. Go .8 mile to first macadam road and keep bearing left for 1.2 mile. Rolling farm land (Approx. 50% tillable) and mountain land with stream and panoramic view of countryside in Washington Township.

This scenic property offers seclusion and a host of possibilities!

TERMS: 10% down day of auction in cashier's check and balance due within 60 days.

OPEN HOUSE: Sunday, October 15 from 2 to 4 P.M.

Sale Ordered by
Anna Lou & John Siegel



AUCTIONEERS:
Raymond P. Stump AU2173-L
717-647-2740

PUBLIC AUCTION RANCH HOME, ANTIQUES, HOUSEHOLD ITEMS & GUNS FRI. EVE., OCT. 13 5PM REAL ESTATE • 7PM

From Hbg. take Rt. 322 west approx. 35 mi to the Thompsontown Exit. Turn right on Rt. 333 east, approx. 1/2 mi. Watch for sale direction sign.

Offering a ranch style home on a large level lot is located in a very nice residential area. It has a kitchen w/breakfast bar, living room, 3 bedrooms and full bath. Basement has 2 rooms, one for laundry & woodstove, the other would be a nice family room. Home is heated by either electric hot water baseboard or a wood stove hooked to the baseboard system. On lot sewage and water from local Water Co. 1 car garage and paved driveway. BE SURE TO SEE THIS DREAM HOME ON either Sat., Sept. 23 from 10 to 2, or Thursday Eve, Sept. 28 from 5 to 8, or call (717) 535-5470 for an apt.

TERMS: 10% down at time of sale, bal in 30 day, other terms at sale.

OWNERS

MARVIN R. and ALBERTA LEACH
Clyde R. Bomgardner, Atty.

Long's Auction Service
Ph. 717-527-2405
Fax 717-527-2941
AU001702L

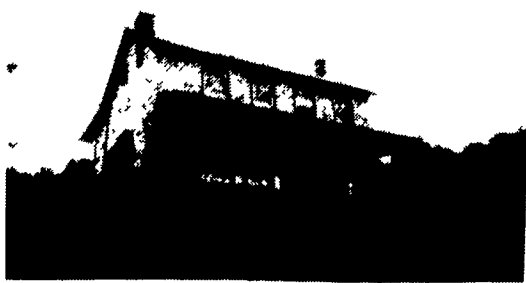
PUBLIC AUCTION



REAL ESTATE
22.35 ACRE FARMETTE

Tues., Sept. 26, 1995
at 6:30 PM

Located at 2515 Belleman's Church Rd. From Leesport exit off Rt. 61 across the river through Dauberville, on Belleman's Church Rd., 2.4 miles to the corner at Indian Trail Rd., Centre Twp, Berks Co, PA



22.35 acres whereon is erected a 2 1/2 story concrete over stone dwelling. First floor has kitchen, dining room, and living room; second floor has 3 bedrooms and bath; basement and laundry room; oil hot water heat. Home appears to be well built, has open beamed ceilings. Property features a nice pond and 5 acres woodland.

Terms — 10% cash or check auction day, balance on or before November 15, 1995. For inspection call for appointment 610-395-8084

Selling for

Robert A. & Donna F. Molchan

Conducted by

PO BOX 215 • Pottsville, PA 18051 • 610-395-8084 • Fax (610) 395-0227 License#AU-001809-L

ZETTLEMAYER AUCTION

AUCTION

HANDGUNS, HUNTING RIFLES, & SHOTGUNS

We will be selling the following located at Bldg. #12 of the Frederick Fairgrounds, East Patrick St., Frederick, MD on:

FRIDAY, OCTOBER 6, 1995
AT 6:00 P.M.

HANDGUNS: Colt Special Edition Sheriffs model w/both 44 Special & 44-40 cyl.—NEW IN BOX: Colt Official Police 38 Special; Colt 45 automatic w/micro barrel & adj. sights; Smith & Wesson 44 Special; Baretta 380 ACP auto. pistol (WWII vintage); Smith & Wesson model 29 44 mag AFH; (2) Colt New Frontier 22 cal. (1 new & unfired); Colt SAA 45 ca. & SAA 44 cal. (both new & unfired); Colt 38 Special.

RIFLES & SHOTGUNS: Ruger No. 1 22-250; Ruger No. 1 6mm (new in box); Remington model 30 Express 257 Roberts; Ruger mini 14 carbine 223; H&K model 93 223; MI Grand Winchester 30-06; MI Grand Springfield 30-06; Germand Drilling 16 ga.x16 ga. w/rifle 8x72R w/hand engraving, patent W. Collath Excelsior; German made Stalking run 16 ga. w/rifle 8x58R Sauer; Winchester model 12 20 ga. w/factory Cutts compensator choke sheet; (2) Winchester model 12 12 ga. 1 w/full choke & 1 w/modified choke; Winchester model 12 16 ga. w/full choke; (2) Winchester model 97 12 ga. 1 w/modified choke & 1 w/Cutts compensator choke; Browning auto. 5 modified 12 ga.; Browning auto. 5 modified 16 ga.; 1903-A3 Smith Corona Springfield 30-06; (2) springfield MIA 308S (1) new - non box; Uzi carbine 9 mm (new in box); Ithica model 37 deluxe pump modified 16 ga.; Winchester model 42 410 ga. w/full choke; Winchester model 12 20 ga. w/modified choke.

ALSO SELLING: Custom made cherry & walnut gun cabinet for 8 guns; MEC loader w/access for loading 12 ga. shells.

SEL. OF APPROX. 35 MORE LONG GUNS
Inc. Stevens; Remington; Winchester & Other Manufacturers.

NOTE: All State & Federal Laws apply. There will be no sale of firearms to DC residents.

TERMS: Cash or good check on day of sale. Bank letter required for out-of-state purchasers. Not responsible for accidents.

SINCE 1980



Trout
Auctioneers, Inc.



"Experience doesn't Cost - It Pays!"

100-L Walkers Village Way

Walkersville, MD 21783

301-396-8888

FFL# 862011016K35935

Food & Facilities Available