

**MAILBOX MARKET  
FOR SALE**

WWII steel roll top desk, 5x3', very good condition, key-lock, no dents. Warren Co. 908-496-4623.

NI 305 mounted corn picker and 307 8 roll husking bed, manuals, JD 2 cyl mounting brackets avail \$500 neg. Lehigh Co. 610-767-4048.

Fresh water lobster broodstock, and juveniles for sale, also emus for sale. Bucks Co. 215-536-6076.

ACWD tractor with 2 row mounted No 33 corn picker field ready or collectors item, McCormick 3x14" trip bottom plow, Bucks Co. 610-346-7391.

72 Chevy, C60, 9ft dumped, runs but needs motor work \$800 OBO. Juniata Co. 717-463-3983.

Rye seed for sale, cleaned and bagged \$5 per bushel. Lebanon Co. 717-865-4988.

Badger forage wagon, tandem wheels, 3 beaters plus roof, excellent condition, \$4000 OBO. Hunterdon Co. 908-782-3162.

5yr old carriage horse, good broke, one horse sleigh, two male peacocks. Wanted-bantams. Lanc. Co. 717-354-5039.

Steel wheels 14x62 in 34 in center, JD 10ft cultipacker, farmec bin wagon. Lanc. Co. 717-354-0159.

Two purebred red polled limousin bulls, 10 months old, \$650 each. Berkley Co. 304-229-2292.

MF 260 forage harvester, 2 rwn snapper head, pickup head, 2 rw corn head, electric controls, new knives, shearbar. Huntingdon Co. 814-448-2260.

Platform scale w/weights, \$80. Piano Becker spinet exc cond, \$999. Panasonic printer w/box paper, model KXP1124, 24 pin \$75. York Co. 717-432-3387.

Woodworking jointer, 8 inch Delta three phase motor, can switch, tech school shop, call eyes, \$975 OBO. Montgomery Co. 610-489-8980.

Two Holstein heifers, due Sept. Chester Co. 610-932-2288.

2 yr old bonded emus for sale or trade, and many other exotics, can locate any animal real cheap. Pike Co. 717-686-3480.

3406 Cat fuel transfer pump, Lear type, new, never used \$150. Aluminum cap for short bed, like new \$200. Carbon Co. 610-377-0372.

Circle Y park and trial saddle, 15 months old, used 2 dozen times, \$750 OBO, 15". Lebanon Co. 717-272-3744.

1972 Ford F350 with 9ft grain body dump, 360 V8, 4 spd, 9000 GVW, 71k miles, good condition. \$2500 BO. Lehigh Co. 610-756-6049.

Small grain rye seed, cleaned and bagged, on skids, can deliver. Wanted-NH 30, 40, blower gear box. Chester Co. 610-269-3442.

100-120 acres farm. York Co. 717-927-6570.

8x6 1/2 ft overhead door havey, 8x8 overhead, 15000 watt alternator, \$1000 Corn chute for end of elevator Call after 9 p.m. Berks Co. 610-468-1341.

1977 GMC Suburban 350, excellent tires, \$500 BO. 1964 Chevelle Malibu 4dr garage kept, all original, best offer Berks Co. 610-756-6852.

Emu hatcher, costs thousands new, sacrifice for \$500. Excellent condition. Evenings. Chem Co. 607-734-1765.

Craftsman tilting arbor table saw, 20x27 cast iron table plus two wing extensions, excellent condition \$275. Lebanon Co. 717-838-2277

Two round wire corn cribs, 14x14. Huntingdon Co. 814-669-4175.

Think snow. Snow plows for JD 750, 850, 950, 1050, electric and hydraulic, 60" rear snow blower. Lehigh Co. 610-298-3206.

Flooring, wide plank, ash, oak, walnut, hickory, cherry, KD, T&G 3/4x3-6", large quantity, moldings, varian nmr complete. Chester Co. 610-565-6038.

1910 International auto wagon restored, must see to be appreciated, best offer over \$30,000, call 5 p.m. to 8 p.m. only. Northampton Co. 610-837-0985.

John Deere #45 and #50 loaders \$300 each. 2 young Hereford bulls, \$375 each. Chester Co. 610-869-2001.

24"x12" belt conveyor with 3 phase on single phase motors, also 30" band saw with tilt table \$250 each. Alleghany Co. 301-724-5326.

New truck rim 3pc accurdie 11x8.5 fits 11x24 tires \$175. 427 Chevy X drilled crank, fresh, 020-020 \$200. Essex Co. 201-736-8196.

Sicklebar fits Allis Chalmers or Simplicity power max, 16 or 20hp. Bradford Co. 717-265-6465.

1 1/2 ton stove coal. Lanc. Co. 717-738-4870.

Cornell Model WS24, 3 point log splitter, utilizes tractor hydraulic system, like new, \$575. Juniata Co. 717-436-8354.

1948 Dodge stake body, 1 ton truck 48000 miles, barn kept past 20 years, \$2500 OBO. Perry Co. 717-567-6710.

25-30 Charolais feeder calves, Noskots. Jacobson Farm, Westfield, PA 16950. Tioga Co. 814-387-5268.

New Holland 326 haybaler baled 10000 bales NH 324 cornhead, NI 325 2 row narrow row cornpicker, good \$4000. Perry Co. 717-789-3687.

Plant tissue culture equipment, sterilizer, lighted shelving, transfer hoods, balances, jars, chemicals, cabinets, etc. Bucks Co. 215-536-4563.

Miniature horses mare, bred 9, exceptionally beautiful \$650. Palomino filly blue eyes \$1200. Need homes ASAP BO. Sussex Co. 201-398-7954.

Hack buggy running condition \$200. Sam Yoder, RR2, Box 120, Watsonstown, PA 17777. Northumberland Co.

Shasta 11 1/2' camper gas stove and refrigerator would make a good hunting camper \$345 OBO. Chester Co. 610-869-2078.

Anderson windows (3) new 1/2 rd, 24" w, terracotta, \$30 each. Rollroofing 10 rolls, 1/2 cov \$4.50 each. White, Australian stock saddle \$275. Dauphin Co. 717-944-3045.

Straw blower easy lawn like new, call after 6 p.m. Mercer Co. 609-466-0751.

Hess trucks for sale. Toy collectors special, trucks sold in boxes, different years available, for information call. Tabernacle Co. 609-268-8417.

Shop smith multi tool lathe with attachments \$600 OBO. Leave message. Ed. Sussex Co. 201-875-9899.

One row IH corn picker. Lanc. Co. 717-656-2530.

Six Martin Smidley ranger hog feeders, five 16 hole, one 20 hole, all with four ft extensions, evenings. Columbia Co. 717-458-6645.

1200 bushel speedy, round corn crib, dismantled \$220. Christ King, 271 Red Pump Rd, Nottingham, PA 19362. Chester Co.

Colored Angora goats, white buck, registered doe, Lockhart breeding, w/color genes, gorgeous. Colored mohair available. Bucks Co. 215-257-8847.

14 cubic foot GE chest freezer, good condition, \$125. Lanc. Co. 717-336-7685.

1988 Buick Lasabre SW, 9 passenger, one owner, cruise, tilt, power locks, AC, tape player, nice car, gray, \$3200. Lanc. Co. 717-733-0635.

TD9 good undercarnage, works but needs rings. Lebanon Co. 717-949-3564.

1537 case skid loader, runs good \$2995. NI 323 cornpicker, very good \$1875. IH whirlfeed blower \$275. NH 456 trailer mower \$275. Lanc. Co. 717-445-4348.

79 Chevy 2 seat 3x3 PU, 350V8, auto, rusted \$250. 9509 rebuilt trans \$300. Holland fifth, W\$100. Q100 w/beams housings \$225. Lanc. Co. 717-733-1446.

1200 bu wire corn crib, 1 gravity bin, no gear, 3 gravity bins w/gear, 3 Smedley hog feeders. Lanc. Co. 717-665-4743.

FNH 355 grinder mixer with scale and auger extension, six tooth mohawk chisel plow with buster bar. Lebanon Co. 717-272-0034.

Gas welder, 200amp Miller bat, starter mounted on trailer, plus propane oxygen cutting torch with bottles, etc \$1300. Berks Co. 610-367-9716.

Dark maple dining room set, 6 chairs, and hutch, \$650. Franco belge coal boiler, heats 3 bdrm home \$500. Berks Co. 610-754-7673.

Corn drop elevator with motor, kept inside \$250. 5ft manure bucket for 2250 1HC loader \$425, like new, after 5 p.m. Berks Co. 610-286-5434.

Cub Cadet model 682 two cylinder, hydrostatic, 44" deck, good condition, \$1150. Cadet 54" snow blade \$175. York Co. 717-244-3415.

Rye seed large kernel bulk combine run \$4 bu, cleaned and bagged \$4.75 bu, 1200 bu. Berks Co. 610-683-6098.

4yr old standard bred safe and sound \$1200. Also brown tapan gas stove, \$75. John Deere KBA 28-20 in disks. Lanc. Co. 717-354-5489.

JD Mod 50 or 520 hood and gas tank \$200. Large porcelain flying red horse sign \$400. Chester Co. 610-268-8627.

AKC reg short haired miniature dachunds, shots and wormed, ready Oct 14 \$275, females, \$250, males. Union Co. 717-922-4530.

Toy tin barns like doll houses or smaller wanted for collection. Call (717) 394-4219.

Model 37 Rite Way stove air tight with heat collector \$200. York Co. 717-292-3121.

Tires 16.9x38 on 14" rim, 75% tread \$200. 13.6x38 on 12" rim, 20% tread, \$90, both calcium filled. Lanc. Co. 717-529-6500.

Reg simmental bred heifer cherry red, granddaughter of highwayman and poll-time \$800. Feeder bull calves 150lbs, vaccinated, nice. York Co. 717-428-3124.

Set of front fenders for JD FWD 2950, also roll guard canopy, both ex. Wanted-JD suitcase weights. Bedford Co. 814-766-3687.

Ultralite airplane, 1980 maxair hummer with parachute needs new sails, \$1100 firm. Lanc. Co. 717-665-5476.

Coal stove Surdiac pea coal fed 38000-40000 BTU, decorative, good cond. Lanc. Co. 717-656-8420.

Farmall Super A high cultivators \$2000. High tires, best offer, must sell. Carbon Co. 717-427-4785.

17 year Model and literature collection, 30 Corvettes, Danbury, Franklin, lots of literature, \$975 for all. Lebanon Co. 717-273-3084.

Cub Lo Boy with belly mower, \$2000. Ford 801 Jubilee select drive \$3200. Call eve. Lebanon Co. 717-272-5059.

46 Claus round baler, 3 yrs old, good condition, also Stoltzfus, automatic cow feeder, 129 Lantz Road, Strasburg, PA 17579. Lanc. Co. 717-687-9050.

Good Timothy r-bales, 1st cutting, \$65/ton, 2nd cutting, \$80/ton, wheat straw, r-bales, \$60/ton, 3rd cutting, alfalfa r-bales, \$60/ton. Franklin Co. 717-263-8091.

IH disc \$800. Cultipacker, \$150. Rake \$125. Fast hitch sickle bar mower \$400. Harrow, 3 point harrow. Lebanon Co. 717-865-0304.

2nd calf hol cow due Sept 24, good milker \$1200. Isaac Ebersol, 221 Glen Roy Rd, Nottingham, PA 19362. Chester Co.

471 GMC power unit, with clutch reduction 1000RPM \$1500. Cumberland Co. 717-776-5269.

2 polled Dorset yearling rams \$125 each. Baltimore Co. 410-357-4025.

Cat D4D with good under carriage, blade, PTO, dual hydraulic, 20in tracks \$9500. Berks Co. 610-944-0352.

Massey Ferguson 410 combine 43 33 corn head, 13' grain head. West Co. 412-547-8204.

Ford 4500 backhoe \$6600. New Holland diesel, 445 skid loader \$6900. 79 Eager Beaver, 9 ton 3 axle trailer \$2500. York Co. 717-225-6274.

Small grain rye seed, uncleaned, \$4.50 per bushel. Berks Co. 610-562-2144.

Portable generators, 5500 watt 100 220 also 8 horse power, 3500 watt briggs stratron with winco, good condition. Adams Co. 717-677-7616.

Chisel plow rhino 156 10ft wide high clearance depth wheels, 3 point hitch, like new, asking \$1500 OBO. Northumberland Co. 717-648-6502.

Donkey 1 1/2 year old male, black w/white mussel, \$200. Schuylkill Co. 717-345-2656.

1973 International C&C good tires, runs \$650. Huntingdon Co. 717-483-6656.

Cast iron bathtub with legs, \$125. Double drain cast iron sink \$125. Excellent condition, apt size gas range \$125. Lehigh Co. 610-285-2611.

DX 130 field ready, 2800 hr, \$6800. Lanc. Co. 717-354-7267.

New bushel and half bushel boxes, also have glass cut size, Gideon Lapp, 135 Iva Road, Ronks, PA 17572.

JD 2640 2270 hr ind 540/1000 PTO. Lanc. Co. 717-354-2652.

Storm front carriage, fiberglass body, tan interior, stain dash, 12V, good condition, \$1800. Call 7-8 eve. Lanc. Co. 717-626-4636.

IH plow 3x16, spring reset, excellent condition \$1875, NH 489 haybine, good condition \$2700. Cumberland Co. 717-532-5871.

Incubator, 1100 egg capacity automatic turner, circulated air electronic thermostat, cedar enclosed cabinet, used 2 seasons, \$800. Franklin Co. 717-375-2142.

NH 890 2m snapper head, like new with kit \$2500. 20.8x42 tractor tires, 50% tread \$200. Lanc. Co. 610-593-5909.

Holstein bulls, sired by Luke Elvin Tesk Merrill dams up to 33000 milk, many to choose from. Lebanon Co. 717-933-4577.

Ford 3pt 14inch, 3 bottom plow, auto reset, good condition \$175. 3/4 ton feed bin \$100. Adams Co. 717-359-5953.

Sauder front end loader, hydraulic bucket \$350. Cub Cadet w/front end loader and 44" mower \$1950. Used fence boards and posts, horse trlr w/dr. Lanc. Co. 717-687-8408.

323 NI corn picker, in good condition. David Glick, 435 Springville RD, Quarryville, PA 17566. Lanc. Co.

5yr old quarter horse stallion \$1000. Weanling filly \$500. Lanc. Co. 717-484-0224.

20 tons ear com, \$90/t. Out of crib, can help load, would grind for \$12/ton. Let ring. Lanc. Co. 610-286-7093.

1971 Ford F250 not running, 75000 miles, orig owner, 4spd, 360Cu, V8 \$700. Columbia Co. 717-672-9791.

New galvanized stove pipe, various sizes, hundreds available, \$1 each. Also fittings and dampers, stainless commercial sink \$125. Berks Co. 610-582-0626.

Homemae horizontal wood splitter, w/5 HP Briggs motor, equal to 20 ton, in good condition \$400 firm. York Co. 717-792-2719.

1500 gal Van Dale vacuum manure tank, tandem axle complete w/suction hose, priced right, decent shape, call for details. Lanc. Co. 717-445-6674.

2090 Caswe tractor cab, 6080 Allis Chalmers, great shape, 2 row New Idea corn picker, feedef steers, avg 400 lbs, simmental angus. Felton, PA. 244-9381.

Tractor and wagon, Farmall H \$800. Wagon \$150. Good working condition John Deere sickle bar mower \$100. Lanc. Co. 717-626-9295.

NI 206 manure spreader, for parts, and front steel wheels and tongue assembly with triple trees for NI #10, all \$100. NW Shirk, 263 Boot Jack Rd, Narvon, PA 17555. Lanc. Co.

Wooden silo, free removing. Locoming Co. 717-546-3498.

American stair glide stair lift, right side of stairs used one month, like new. York Co. 717-432-3610.

6080 Allis Chalmers cab air, new tires, Case 2090 Case cab Ontario drill \$150. 1150 Case crawler, 1 acre lot, beautiful view of valleys, 3 mi off I83. Felton, PA. 717-244-9381.

Mixed grass \$1 each at barn, horse drawn box wagon, \$675. 72 GMC, 12 stake, PA insp. New oak bed \$2000. York Co. 717-235-1793.

131 ac farm Nippenosi Valley, Lyc Co, 127 ac tillable, will help finance, also dairy heifers, due Sept & Oct Williamsport, PA 717-745-7192.

**MAILBOX MARKET  
WANTED**

Wanted to borrow \$85,000 for 1 year at 10% interest on personal home valued \$120,000, 1st trust, call Scott. Frederick Co. 540-868-1323.

John Deere or other corn sheller, must have loading elevator. Lanc. Co. 717-653-5991.

Hired boy needed for 1998 part time. Henry Ebersol, 2936B Stumptown Rd, Ronks, PA 17572. Lanc. Co.

Large seed plates for JD 999, good disks, shoes for 13x7 wood box, Oliver drill, within 50 miles. Hunterdon Co. 908-996-4379.

Model 31 hi front end loader bucket with forks or whole loader for hi Super M. Bucks Co. 215-598-7287.

Party to breed my Ithasa apso, any similar breed. Lynn Gilbert, Box 60, Sacramento, PA 17968. Schuylkill Co. 717-682-9420.

720 IH spring trip plow, 5-18", call with price and condition. Newark, DE. 302-834-0802.

Oil furnace in good condition. Adams Co. 717-259-0203.

Old model airplane or boat engines made between 1939 and 1949, with ignition timers and miniature spark plugs. Berks Co. 610-670-9544.

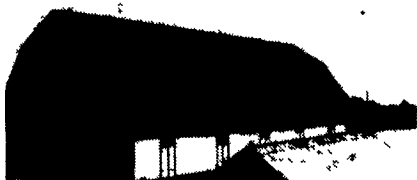
Collector buys old guitars by Martin, Gibson, National, etc. also related catalogs, photos. Box 21, Lititz, PA 17543. Lanc. Co. 717-626-7854.

**JAY ZEIGLER Standing Seam Metal Contractor**

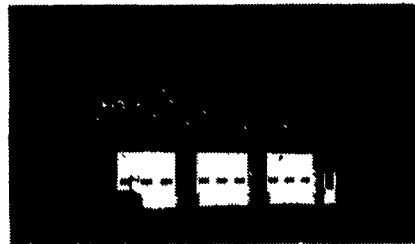
Since 1963 "Simply The Very Best Roof Available"

**FREE Estimates**

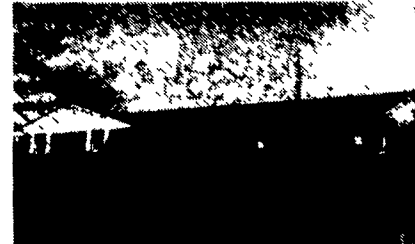
**Call For Information**



Use on Barns Or Garages



Light Commercial



Reroof w/Metal



New Construction

**ADVANTAGES:**

- Roof can last for 100 years - cost efficient
- Can be installed over existing roof (Asphalt, roll roofing, wood shingles)
- Is environmentally safe
- Beauty - colorful (galvanized, 40 lb. terne, terne-coated stainless, and painted steel in over 20 different colors.)
- Can be installed on flat roof with as little as 1/2" pitch per foot.
- Good for homes, farm buildings, garages, commercial buildings.
- Sheet in continuous length installed with concealed fasteners with double lock seam for water tight application.

PO Box 231 Rehrersburg, PA 19550  
(717) 933-4666 (717) 933-5305