

North Jersey Livestock

Hackettstown, NJ

Report Supplied by Auction
Tuesday, September 19, 1995
Report supplied by auction

CALVES .10-1.17% .
COWS .20-42.
EASY COWS .05-.34% .
FEEDERS 300-600 LBS. .25-.64.
HEIFERS .12%-.52% .
BULLS .36-.53.
STEERS .39-.60.
HOGS .37-.44.
ROASTING PIGS EACH 17.00-21.00.
BOARS .23.
SOWS .23-.31.
SHEEP: .08-.56.
LAMBS EACH 24.00-69.00.
LAMBS PER LB. .10-.99.
GOATS EACH 32.00-127.50.
KIDS EACH 5.00-86.00.
TOTAL: 1124 HEAD.

Special State Feeder Cattle

RICHMOND, VA

SEPTEMBER 21, 1995

998 head sold
Steers Medium 1 Large 1 Small 1
Medium and Large 2 400-500 - - FEW
58.50 FEW 62.50 500-600 64.75-66.25 -
52.00 65.75 600-700 54.50-65.75 63.75
60.25 61.75-64.00 700-800 63.00-67.25
64.75 62.00 60.50-64.50 800-900 64.00
64.00 57.25 59.75-63.00 900-1000
60.00-62.50 59.50 - 59.50 1000-1100
58.75-59.00 59.75 - -

Westminster Livestock

Hagerstown, Md.

September 19, 1995

Report supplied by auction

SLAUGHTER COWS: 2.00-3.00
LOWER UTILITY 33.00-36.75; HIGH
DRESSING TO 37.25; CANNERS
29.00-33.00; SHELLY 28.00 DOWN.
BULLS: 2.00-3.00 LOWER. YG#2
1200-2300 LBS. 39.00-42.00.

FED STEERS: LOW CHOICE BEEF
BREEDS 1200 LBS. 58.00-60.00;
SELECT TO 55.00; HIGH CHOICE
HOLSTEINS 1100-1300 LBS.
54.00-59.00, 1 AT 62.50.

FED HEIFERS: LOW CHOICE
1000-1200 LBS. 54.00-55.00; SELECT
50.00-53.00.

VEAL CALVES: LOW CHOICE
200-350 LBS. 55.00-60.00; CULLS
85-115 LBS. 30.00-39.00; 50-80 LBS.
25.00-32.00.

FARM CALVES: HOLSTEIN BULLS
#1 95-120 LBS. 85.00-105.00; FEW 90
LBS. 60.00-77.00; #2 80-100 LBS.
40.00-60.00; HOLSTEIN HEIFERS #1
95-120 LBS. TO 180.00; #2 75-110 LBS.
90.00-135.00; BEEF X BULLS
35.00-70.00; FEW 90.00-115.00.

BUTCHER HOGS: 60 HEAD, 1.00
LOWER. US#1&3 225-260 LBS.
46.00-47.00; #2&3 44.00-45.50; FEW 280
LBS TO 43.00; 290 LBS. TO 38.50; 350
LBS. TO 35.00.

BOARS: 500-700 LBS. TO 25.50.
STOCK CATTLE: VERY SELECTIVE
BIDDING. STEERS MEDIUM AND
LARGE FRAME 200-400 LBS.
52.00-62.00; 400-600 LBS. 55.00-66.00;
600-800 LBS. FEW TO 58.50.

HEIFERS: 300-500 LBS. 42.00-55.00;
500-700 LBS. 40.00-50.00; 700-900 LBS.
TO 46.50.

BULLS: 300-500 LBS. 43.00-55.00;
500-700 LBS. 39.00-47.00; 700-900 LBS.
39.00-49.50.

LAMBS: 125 HEAD, 5.00 LOWER.
CHOICE 90-125 LBS. 69.00-75.00; 60-85
LBS. 70.00-86.00, FEW TO 91.00; 45-60
LBS. 60.00-70.00, 1 AT 92.00; MEDIUM
TO GOOD 50-90 LBS. 60.00-69.00.

SHEEP: 35 HEAD 22.00-35.00.

GOATS: LARGE 65.00-97.00;
MEDIUM 40.00-62.00; SMALL
20.00-44.00.

PIGS AND SHOATS: 310 HEAD.

GOOD DEMAND. SPECIAL GRADED
SALE BY POUND, #1&2 10 HEAD 19
LBS. 62.00; 65 HEAD 35-50 LBS.
70.00-88.00; 59 HEAD 50-60 LBS.
69.00-81.00; 54 HEAD 60-70 LBS.
70.00-73.00; 76 HEAD 70-80 LBS.
60.00-64.00; 6 HEAD 83-95 LBS.
55.00-62.00; #2 20 HEAD 30-50 LBS.
58.00-66.00; 11 HEAD 50-70 LBS.
54.00-60.00.

SOWS: 300-450 LBS. 32.00-36.00;
475-700 LBS. 34.00-37.25.

NEXT THURS., SEPT. 26 SPECIAL
FEEDER CATTLE SALE, APPROX. 7:45
P.M.

Jersey Shore Livestock Market, Inc.

Auction every Thursday
at 4:00 p.m.

Jersey Shore, Pa.

Report supplied by Auction
Thursday, Sept. 21, 1995

Lancaster Farming, Saturday, September 23, 1995-A17

RETURN TO FARM CALF
70.00-125.00.

GOOD VEAL: 40.00-69.00.

COMMON VEAL: 20.00-39.00.

SELECT STEERS: 53.00-60.00.

COMMON STEERS: 42.00-52.00.

COMMERCIAL COWS: 36.00-40.00.

CANNERS-CUTTERS: 32.00-41.75.

SHELLS: 20.00-31.00.

SELECT HEIFERS: 50.00-58.00.

COMMON HEIFERS: 40.00-49.00.

COMMON FEEDERS: 20.00-45.00.

BULLS: 38.00-42.00.

Snyder County Produce

PORT TREVORTON, PA
SEPTEMBER 22, 1995

POTATOES: REDS: 50 lb bag,
6.50-8.00; WHITE: 50 lb bag, 6.50-7.25.
ZUCCHINI: GREEN: 1/2 bu, 6.75-8.75;
1 1/9 bu, 6.50-9.00; YELLOW SQ: 1/2 bu,
4.50-6.75.

PEPPERS: GREEN BELL: 1 1/9,
5.75-14.50; RED & YELLOW: 1 1/9,
6.75-11.75; HOT: 1/2 bu, 3.00-3.75.

GREEN BEANS: 1/2 bu, 6.75-14.00; 1
1/9 bu, 6.00-15.00; YELLOW: 1/2 bu,
9.00-10.00.

CUCUMBERS: 1/2 bu, 5.00-8.50.

TOMATOES: 25 lb lg, 9.00-15.50; S &
M, .50-9.00; CHERRY: by the flats,
7.50-8.75.

BLACK BERRIES: by the pt, 1.95.

ONIONS: by the 50 lb bag, 9.50-10.00.

RED BEETS: by the 1/2 bu, 6.00-8.00.

PLUMS: 1/2 bu, 5.00-8.00.

PEACHES: 1/2 bu, 6.75-9.25.

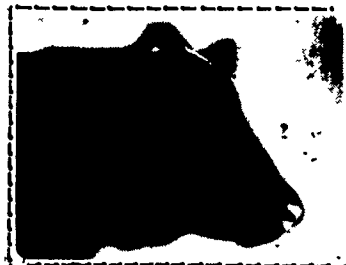
NECTARINES: 1/2 bu, 3.75-7.00.

SWEET CORN: by the doz, 1.90-2.65.

GRAPES: home grown, 1/2 bu,
6.00-7.00.

PATTY PAN: sq, 2.00-3.75, 1/2 bu.

PUMPKIN NECK: 1.00-1.70.
HOWDEN PUMPKINS: 1.00-2.20.
JACK-BE-LITTLE: 1/2 bu, 4.00-7.75.
GOOSE GOURDS: 1.00-1.75; DRESS
UP: 8.00-11.00; ORNAMENTAL: 1/2 bu,
6.00-7.50; SNAKE: .25-.85; FISH:
25-.55.
INDIAN CORN: by the bunch,
25-1.25; WREATHS: 17.50-20.00.
BANANAS: 3.00-12.00.
ACORN SQ: 1/2 bu, 4.00-6.75; BUT-
TER & NUT: 1/2 bu, 5.00-7.75.
LOPES: 12 ct, 10.00-12.00; 9 ct,
12.00-15.00.
WATERMELONS: 18-22 lbs,
2.00-2.90.
PEARS: by the bu, 8.00-17.00.
APPLES: by the bu, RED DEL, YEL-
LOW DEL & MAC: 7.00-12.00.
BROCCOLI: 1 1/9, 8.00-11.75.
CAULIFLOWER: by the head,
1.00-1.40 each.
CABBAGE: by the head, .75-1.50.



PURSUITTM IS NOW LABELED FOR ALFALFA.

(Is that the gasping of weeds we hear?)

Up until now weeds had it somewhat easy. Decreasing the forage quality of your stand with no real threat of punishment. That's about to change. Luckily, there's a new tool to help you manage your alfalfa — PURSUIT[®] herbicide. PURSUIT provides you with both contact and residual control of the toughest broadleaf weeds and grasses in alfalfa, leaving you with the highest forage quality possible. So don't let weeds have the upper hand this year. Use PURSUIT on alfalfa. For more information see your local AgriCenter dealer or simply call 1-800-3-PURSUIT.

Pursuit
herbicide

NEW SEEDINGS-
Treat after second trifoliate leaf stage
or

ESTABLISHED STANDS-
Treat after last cutting

Controls Chickweed, Mustards and Many other
GRASSES and BROADLEAF WEEDS



Application for registration is pending in the states of California and New York.
Always follow label directions. [®]TM Trademarks, American Cyanamid Company ©1995



HEAVY DUTY ROUND BALE MOVERS

FEATURING: Kverneland forged steel spear
electrically heat treated

3 POINT HITCH BALE MOVERS

3 PT 2502 DOUBLE SPEAR

• Small diameter spear for easy penetration

• 1500 lb.
capacity

The Same Unit Can Be Used With One Spear For Cen-
ter Of Bale Or Two Spears For Under Bale.

COMBINATION BALE MOVER

• Heavy duty structure designed to fit any 3 pt.
hitch or loader boom with one or two cylinders

• Small diameter spear for easy penetration
• 2500 lb. capacity

The Same Unit Can Be
Used With One Spear For
Center Of Bale Or Two Spears For
Under Bale.

COM 2502



STANDARD DUTY BALE MOVERS 3 POINT HITCH BALE MOVERS

2 PT.-1000
1000 Lb. Capacity

3 Pt.-1252
Double Spear

1250 Lb. Capacity

The Same Unit Can Be Used With One Spear For Center Of Bale Or
Two Spears For Under Bale.

LOADER BUCKET MOUNTED BALE MOVERS PLF-4000 FRONT END LOADER FORKS

• Mounts to
loader
bucket in
minutes

• 1500 lb. capacity
• 24" high load guard

SSL-2500 SINGLE SPEAR BALE MOVER

• Mounts to loader bucket in
minutes

• Complete
with chain and
binder

• 1500 lb. capacity



LAPP'S BARN EQUIPMENT

5935 OLD PHILADELPHIA PIKE, GAP, PA 17527

PHONE: 717-442-8134

WE SERVICE WHAT WE SELL

— Radio Dispatched Trucks —

