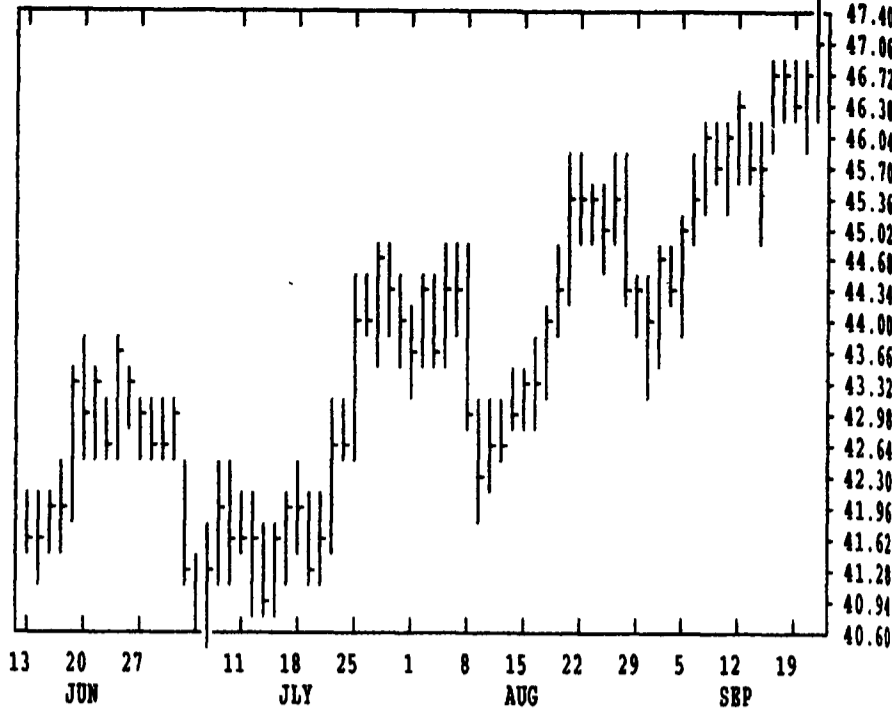
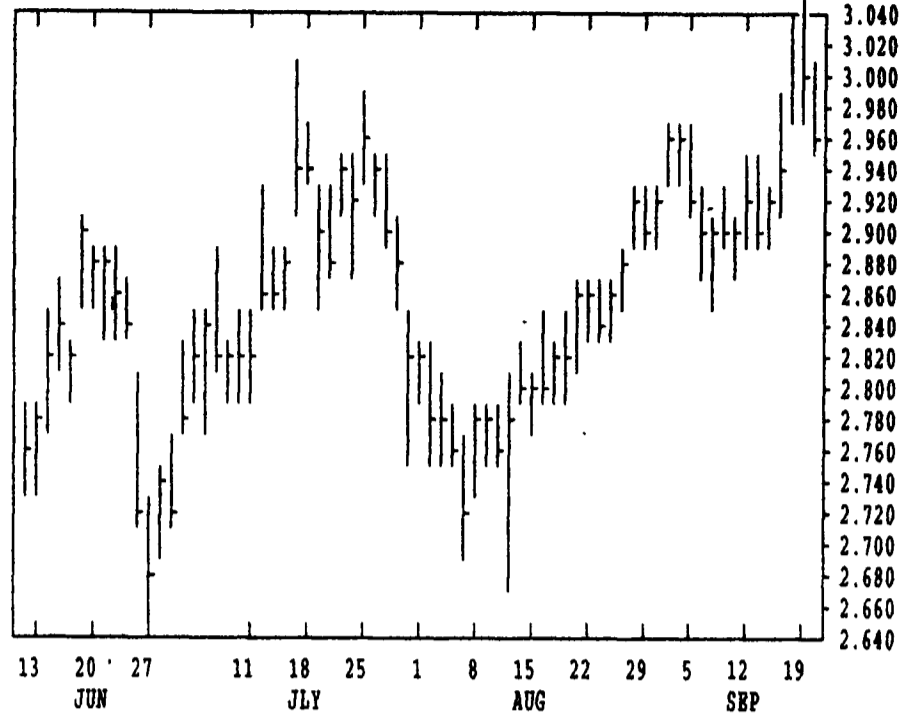


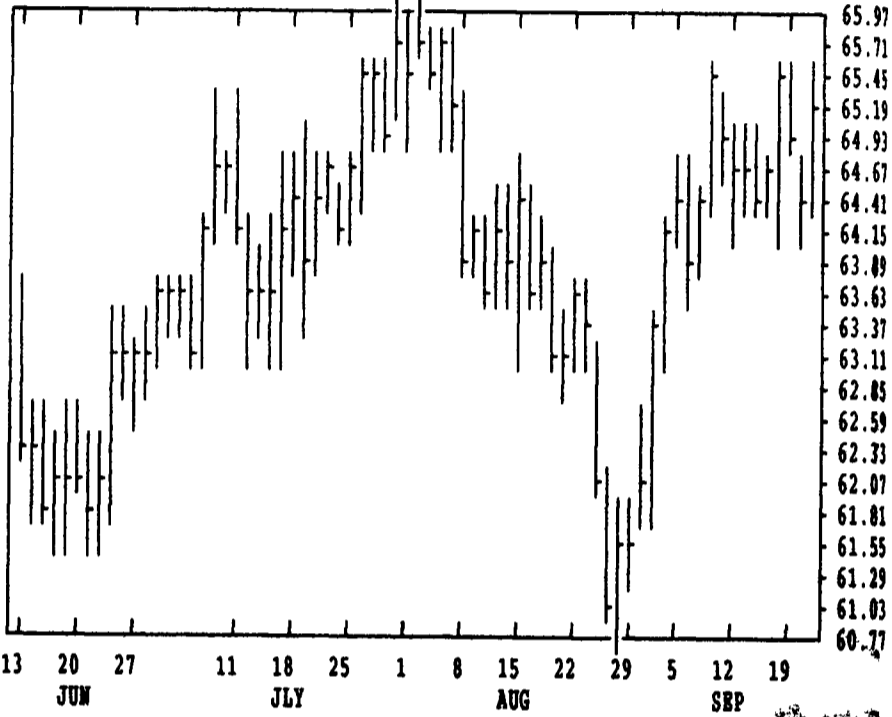
GRAIN, CATTLE AND HOG FUTURES MARKETS

(Closing bids: Thursday, September 21, 1995)

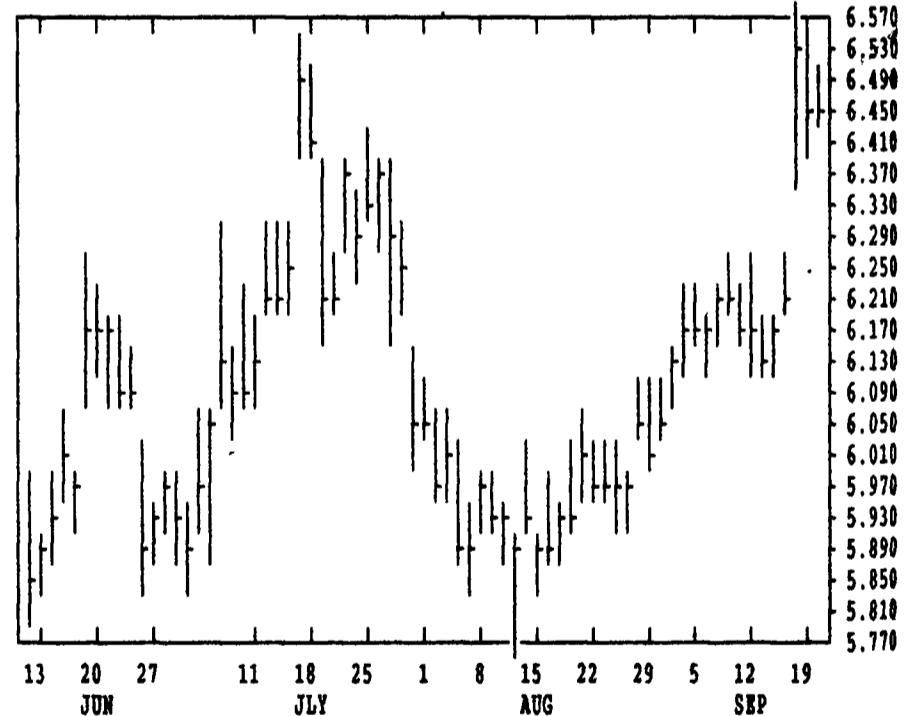
DTN GRAINS 18 CORN SEP 95 CONTRACT HIGH: 3.050 LOW: 2.380



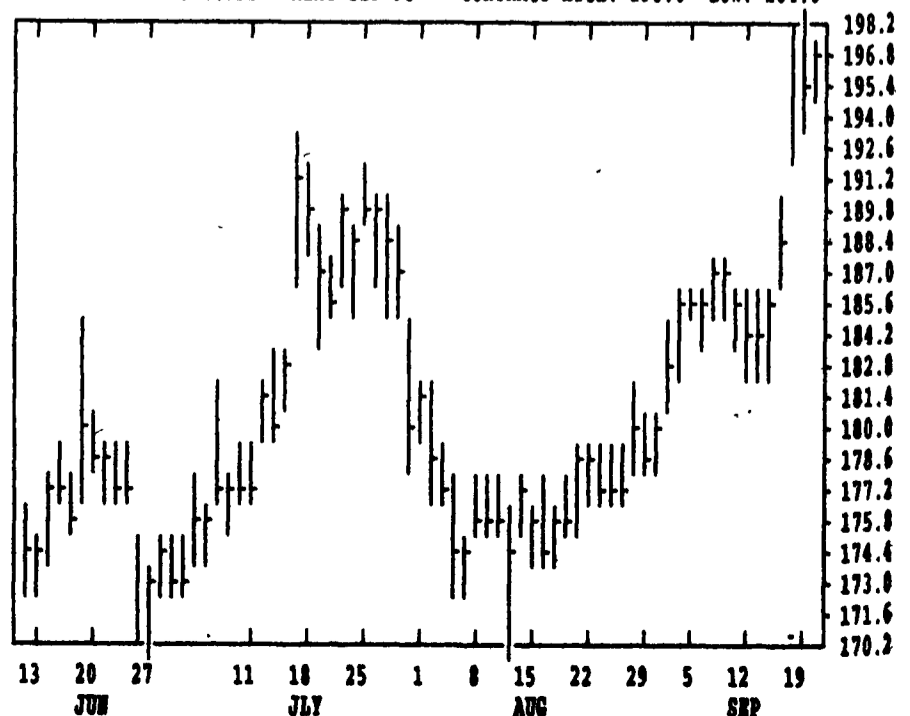
DTN LIVESTOCK 19 CATTLE, LIVE OCT 95 CONTRACT HIGH: 67.55 LOW: 60.25



DTN GRAINS 23 SOYBEANS SEP 95 CONTRACT HIGH: 6.570 LOW: 5.646



DTN GRAINS 25 SOYBEAN MEAL SEP 95 CONTRACT HIGH: 198.6 LOW: 164.0



DTN FUTURES 14 09/21/95		TECHNICAL POINTS				SLOW STOCHASTIC						
PRICES ARE DECIMAL		MOVING AVERAGES				RSI'S						
CONTRACT	CLOSE	4-DAY	9-DAY	18-DAY	45-DAY	9DAY	14DAY	30DAY	%K	%D	%K	%D
WHEAT DEC	491.00	487.50	481.31	472.11	461.47	73.7	68.4	62.7	81	74	88	84
WHEAT MAR	494.75	491.75	484.31	473.07	459.84	78.2	71.9	64.6	82	80	91	89
KCWHT DEC	495.25	491.44	484.53	476.69	466.98	75.5	69.3	63.0	86	81	90	86
KCWHT MAR	492.50	489.37	481.14	471.44	459.38	78.8	72.3	64.8	84	84	92	89
MWWHT DEC	488.50	485.62	479.75	472.81	466.02	73.8	67.5	62.0	82	77	88	84
CORN DEC	311.00	311.50	304.47	298.35	289.30	74.9	72.2	65.1	73	82	91	93
CORN MAR	318.75	319.25	312.14	305.79	295.82	75.5	73.4	66.5	72	81	91	93
CORN MAY	320.75	321.37	314.83	308.37	298.63	73.6	72.1	65.5	66	78	89	94
OATS DEC	177.25	180.87	178.42	176.57	172.44	51.8	54.5	55.9	44	66	78	83
BEANS NOV	663.75	658.94	641.17	631.78	620.85	78.1	73.3	63.5	81	86	89	85
BEANS JAN	673.75	668.94	651.03	641.58	629.79	78.4	73.8	64.1	82	86	90	86
BEANS MAR	682.00	677.75	660.11	650.83	638.43	77.8	73.3	64.0	83	85	87	75
MEAL OCT	199.70	198.42	192.14	188.87	184.81	78.5	74.5	65.6	84	88	91	87
BNOIL OCT	26.67	26.68	26.28	26.16	26.35	61.0	57.2	52.9	67	75	68	48
CATTLE OCT	65.20	65.01	64.85	64.18	64.28	59.1	57.1	54.6	48	56	88	86
CATTLE DEC	66.95	66.67	66.67	66.06	65.53	63.8	62.2	59.0	54	61	88	90
FCTL SEP	64.80	64.77	65.16	64.88	65.46	43.0	45.0	47.1	24	20	62	70
HOGS OCT	47.30	46.80	46.44	45.72	44.66	73.9	69.2	63.3	84	84	94	89
HOGS DEC	47.23	46.42	46.21	45.52	44.75	76.7	70.9	63.4	82	76	92	90
PKBLS FEB	60.40	58.86	58.69	58.18	55.43	65.9	63.8	61.0	83	65	79	79

CORN				CHICAGO WHEAT				K. C. WHEAT			
DEC	MAR	MAY	JULY	DEC	MAR	MAY	JULY	DEC	MAR	MAY	JULY
3142	3216	3236	3222	4966	5000	4600	4090	4994	4966	4656	4144
3106	3184	3202	3186	4880	4920	4534	4034	4930	4900	4594	4084
3110*	3186	3206*	3192*	4910*	4946*	4566*	4066*	4952*	4924*	4624*	4126*
+12	+14	+16	+20	+16	+16	+32	+32	+24	+30	+20	+36
2954	2934	2940*	2940*	4120	4090	4114*	4114*	4174	4150	4164*	4164*
+10	+10	+10	+10	+40	+40	+40	+40	+40	+40	+40	+40
2786	2762	2764*	2764*	4210	4180	4200*	4200*	4874	4884*	4884*	4884*
+2	+2	+2	+2	+34	+34	+34	+34	+20	+20	+20	+20
2680	2670	2680*	2680*	1816	1882	1834	1834*	4984	4944	4944*	4944*
+10	+10	+10	+10	-24	-16	-16	-16	+14	+14	+14	+14
6724	6820	6666	6736*	1892	1892	1860	1860*	4830	4804	4810*	4810*
+90	+90	+90	+90	-12	-12	-12	-12	+26	+26	+26	+26
6900	6900	6760	6820*	1890	1870	1870*	1870*	4540	4500	4530*	4530*
+82	+82	+82	+82	-10	-10	-10	-10	+60	+60	+60	+60
6944	6944	6814	6872*	2023	2077	2030	2053*	2688	2660	2667*	2667*
+82	+82	+82	+82	+21	+28	+28	+28	+19	+26	+26	+26
6984	6984	6860	6910*	2067	2077	2030	2053*	2695	2665	2679*	2679*
+74	+74	+74	+74	+23	+28	+28	+28	+26	+26	+26	+26
6920	6920	6850	6850*	2067	2095	2045	2067*	2695	2665	2679*	2679*
+50	+50	+50	+50	+33	+33	+33	+33	+25	+25	+25	+25
6750	6750	6674	6676*	2067	2085	2040	2064*	2695	2665	2679*	2679*
+16	+16	+16	+16	+34	+34	+34	+34	+25	+25	+25	+25
6710	6710	6620	6624*	2067	2100	2047	2075*	2730	2700	2711*	2711*
+26	+26	+26	+26	+34	+34	+34	+34	+26	+26	+26	+26
6850	6850	6820	6820*	2067	2075	2035	2055*	2725	2705	2708*	2708*
+22	+22	+22	+22	+33	+33	+33	+33	+22	+22	+22	+22
6850	6850	6820	6820*	2067	2060	2036	2047*	2730	2705	2708*	2708*
+22	+22	+22	+22	+22	+22	+22	+22	+22	+22	+22	+22

LIVE CATTLE				FEEDER CATTLE				LIVE HOGS			
OCT	DEC	FEB	APR	SEP	NOV	JAN	MAR	OCT	DEC	FEB	APR
6552	6740	6612	6637	6500	6515	6435	6305	4750	4730	4917	4835
6435	6617	6540	6585	6457	6430	6362	6250	4642	4610	4825	4750
6520*	6695*	6577*	6620*	6480*	6465*	6387*	6270*	4730*	4722*	4897*	4830*
+75	+70	+27	+32	+10	+17	+5	-2	+60	+102	+70	+62
6245	6132	6245	6245	6490	6515	6435	6305	4835	4835	4750	4830*
+25	+22	+25	+25	+25	+17	+5	-2	+57	+67	+57	+57
6132	6095	6132	6132	6255	6255	6225*	6225*	5240	5160	5235*	5235*
+22	+12	+12	+12	0	0	0	0	+67	+70	+67	+67
6195	6167	6172*	6172*	6205	6205	6200*	6200*	5030	4950	5030*	5030*
+12	+12	+12	+12	0	0	0	0	+70	+70	+70	+70
6850	6850	6820	6820*	6275	6265	6265*	6265*	4615	4550	4595*	4595*
+22	+22	+22	+22	0	0	0	0	+35	+35	+35	+35