

**Philadelphia Fruit Market**

PHILADELPHIA  
SEPTEMBER 20, 1995

**CITRUS FRUITS**  
---GRAPEFRUIT: MARKET ABOUT STEADY ctns CA Red 27s 13.00 few 17.00-18.00 32s few 17.00-18.00 40s 14.00 fr qual 13.00  
---LEMONS: MARKET ABOUT STEADY ctns AZ 140s fair qual 21.00 165s 26.00 fair qual 17.00 200s fair qual 17.00 235s fair qual 17.00 CA 95s 37.00 fr qual 25.00 ord qual 20.00 115s 37.00 fair qual 25.00 140s 34.00 fr qual 20.00-23.00 mos 21.00-22.00 ord qual 20.00-21.00 165s 28.00 fr qual 19.00-22.00 mos 20.00-22.00 200s 22.00 fair qual 18.50-21.00 CL BOAT 110s 13.00 120s 13.00 140s 16.00 160s 16.00 180s fr cond 10.00  
---LIMES: MARKET LOWER 10 lb ctns FL Seedless Type 48s 6.50 MX Seedless Type 42s 6.00-6.25 48s 6.00-6.25 54s 5.50-6.25 63s 5.50-6.25  
---MISC CITRUS: OFFERINGS INSUFFICIENT TO QUOTE  
---ORANGES: MARKET ABOUT STEADY ctns CA Valencia 56s 19.00-20.00 few lwr fr qual 13.00-15.00 72s 19.00-20.00 some loas 18.50 fr qual 13.00-15.00 mos 15.00 88s 16.50-18.00 mostly 16.50 fr qual 13.00-15.00 mos 13.50-14.00 113s 16.00-17.00 mostly 16.00 fr qual 14.00-15.00 138s fr qual 14.00  
---TANGELOS: OFFERINGS NONE  
---TANGERINES: OFFERINGS NONE  
---TEMPLES: OFFERINGS NONE  
---BERRIES  
---BLUEBERRIES: OFFERINGS LIGHT fits 12 6-oz cups with lids MI med 12.00  
---CRANBERRIES: TOO FEW SALES TO QUOTE  
---MISC BERRIES: OFFERINGS INSUFFICIENT TO QUOTE  
---RASPBERRIES: OFFERINGS LIGHT fits 12 6-oz cups with lids CA Red 18.00-21.00 preferred labels 27.00-30.00  
---STRAWBERRIES: MARKET ABOUT STEADY fits 12 1-pt bkts CA med-lge 7.00-8.00 one label 9.00 ord cond 3.00 med 5.00-6.00 mostly 5.00  
**MELONS**  
---CANTALOUPS: MARKET ABOUT STEADY 1/2 ctns/crts CA 9s 9.00 12s 12.00-13.00 mostly 12.00 few 11.00 15s 11.00-12.00 mostly 12.00 few 13.00 18s 11.00-12.00 mostly 12.00 some 10.00 few 13.00  
---HONEYDEWS: MARKET ABOUT STEADY 2/3 ctns AZ 5s 6.00-7.00 6s 6.00-7.00 CA 4s 5.00 poor cond 1.00-2.00 one label 8.50 5s 5.00-6.00 poor cond 1.00-2.00 one label 9.00 6s 5.50-6.50 mostly 6.00 some 7.00 one label 9.00 8s one label 9.00  
---MISC MELONS: OFFERINGS INSUFFICIENT TO QUOTE  
---WATERMELONS: MARKET LOWER ctns per ctn MD Sangria 3s 10.00 SC Sangria 4s 10.00 TX Allsweet 3s 12.00 one label 18.00  
**NON-CITRUS FRUITS**  
---APPLES: MARKET ABOUT

**STEADY CONTROLLED ATMOSPHERE STORAGE** ctns trypk WA WAExFey Red Delicious 88s 17.00-18.00 100s 17.00-18.00 113s 17.00-18.00 WAFey Red Delicious 100s 15.00 NEW CROP ctns trypk CA U.S. ExFey Granny Smith 88s 22.00-24.00 NC Comb U.S. ExFey U.S. Fey-Red Delicious 100s 16.50-17.00 Red Rome 80s 18.50-19.00 100s 16.50-17.00 PA Comb U.S. ExFey-U.S. Fey Golden Delicious 125s 11.00-13.00 SC U.S. ExFey Granny Smith 80s 22.00 88s 22.00 100s 18.50 WA WAExFey Red Delicious 88s 22.00-23.00 100s 20.00-21.00 one label 22.00 Golden Delicious 88s 22.00-23.00 Braeburns 113s fr cond 10.00 U.S. ExFey Golden Delicious 100s 20.00 113s 18.50 Granny Smith 100s 19.00-20.00 ctns 12 3-lb flmbgs NC U.S. Fey Red Delicious 2 1/4" min 10.00-11.00 PA U.S. Fey McIntosh 2 1/4" min 7.00 Paula Red 2 1/4" min 5.00-7.00 buctns lse NJ Gala No Size Marks fr cond 8.00  
---APRICOTS: OFFERINGS NONE  
---AVOCADOS: OFFERINGS INSUFFICIENT TO QUOTE  
---BANANAS: MARKET STEADY 40 lb ctns IMPOR 13.00 fair qual 10.50-11.00 small 8.50-10.00 mos 8.50 40 lb ctns bagged IMPORT 13.00 ctns institutional pk IMPORT petite 13.00  
---FRUITS OTHER: ctns 1 lyr CA Apple Pears 20th Century 14s 12.00 Hosui 15s 14.00 16s 13.00 18s 14.00 ctns 12 1-pt bkts CA Figs Black Mission 12.00-13.00  
---GRAPES: MARKET ABOUT STEADY 23 lb ctns/lugs CA Thompson Seedless lge 16.00-18.00 mostly 17.00-18.00 preferred labels 20.00-21.00 mos 20.00 Flame Seedless lge 16.00-18.00 mostly 17.00 preferred labels 21.00-22.00 Black Beauty Seedless 19.00 one label 22.00 20-21 lb lugs bgd CA Thompson Seedless lge 13.00-16.00 mostly 15.00-16.00 fr cond 11.00 ord cond 3.00-4.00 one label 18.00 sml fr cond 7.00-8.00 Flame Seedless lge 18.00 med-lge 14.00-16.00 mostly 14.00-15.00 Black Beauty Seedless 16.00-18.00 18 lb lugs wrpd CA Thompson Seedless lge 18.00-20.00  
---KIWIFRUIT: MARKET STEADY fits 1 lyr NZ 36s 9.50 39s 8.50-9.00 CONTROLLED ATMOSPHERE STORAGE ctns 23 lb lse CL 33 sz ord cond 6.00-8.00  
---MANGOES: MARKET STEADY fits 1 lyr PR Keitua 8s 8.00-9.00 10s 8.00-9.00  
---NECTARINES: MARKET STEADY 25 lb ctns lse CA California Well Matured August Red 56 sz 17.00 64 sz 14.00 72 sz 13.00 84 sz 13.00  
---PAPAYA: OFFERINGS INSUFFICIENT TO QUOTE  
---PEACHES: MARKET HIGHER 3/4 buctns NJ U.S. ExOne Jersey Queen 2 1/4"up 18.00 No Grade Marks Jersey Queen 2 3/4"up 22.00  
---PEARS: MARKET STEADY 4/5 buctns wrpd CA U.S. One Bosc 100s 28.00 110s 26.00 WA WAFey Bartlett 120s 15.00 1/2 buctns OR U.S. One Stark Crimson 50s 21.00 Seckel 105s 21.00 red seckel 50s 21.00 WA U.S. One Seckel 1 5/8" min 14.00-16.00 36 lb ctns CA U.S. One Bartlett 80 sz 17.00 90 sz 16.00-18.00 100 sz 15.00-16.00 mostly 16.00 110 sz 14.00-15.00 mostly 15.00 120 sz 14.00

---PERSIMMONS: OFFERINGS NONE  
---PINAPPLES: MARKET ABOUT STEADY ctns 1 lyr HI AIR 6s 11.50-12.00 mostly 12.00 ctns 2 lyr CR 8s 10.00-12.00 10s 12.00 12s 12.00-13.00 14s 12.00-14.00  
---PLANTAINS: 50 lb ctns CB 18.00-19.50  
---PLUMS: MARKET STEADY 28 lb ctns lse CA California Well Matured Angelono 40 sz 30.00 fr qual 18.00-20.00 45 sz 28.00 50 sz fr qual 18.00-20.00 mos 18.00 55 sz fr qual 16.00 60 sz fr qual 13.00 65 sz 27.00 70 sz fr qual 16.00 Autumn Giant 25 sz 26.00 40 sz 26.00 Sharrons Plum 40 sz 25.00 60 sz 27.00 OR U.S. One Empress 1 3/4" min 25.00 WA U.S. One Empress 1 3/4" min 21.00  
---POMEGRANATES: TOO FEW SALES TO QUOTE  
---PRUNES: MARKET ABOUT STEADY 30 lb ctns OR OROne Italian 1 1/4" min 12.00-13.50 WA WAOne Italian 1 1/4" min 13.00

**Kutztown Produce Auction**

Fleetwood, PA  
September 15, 16, 19, 21  
Hay and Straw at 9:00 a.m. followed by produce  
Report Supplied by Auction  
APPLES: 2.00-8.50 1/2 BU., 4.00-4.50 BU.  
BEANS: GREEN 3.50-11.50 1/2 BU.; YELLOW 7.00-10.00 1/2 BU.; LIMA 4.00-9.50 1/2 BU., 9.00-15.00 BU.  
BLACKBERRIES: 10.00 FLAT.  
BROCCOLI: 2.00-3.50 1/2 BU., 6.00-13.00 BU.  
CABBAGE: 1.50-6.50 BAG.  
CANTALOPES: .70-1.90 EA.  
CAULIFLOWER: 1.20 EA.  
CUCUMBERS: 1.00-3.00 1/2 BU., 3.75-8.50 BU.  
EGGPLANT: 1.50-4.50 1/2 BU.  
EGGS: .45-.90 DOZ.  
GARLIC: 1.00-1.80 LB.  
GRAPES: 3.50-10.00 BOX.  
HONEYDEW: .20-.45 EA.  
NECTARINES: 1.00-8.50 1/2 BU.  
ONIONS: 1.75-3.00 10 LBS.  
ORNAMENTALS: CORN SHOCKS 70-1.75 EACH; GOURDS .20-.50 EA., 3.00-8.50 1/2 BU., 9.00 BU.; GOOSE, SNAKE AND BIRD GOURDS .50-4.50 EA.; INDIAN CORN .15-2.60 BUNCH; INDIAN FINGERS .30-.90 BUNCH; POPCORN .15-.90 BUNCH; PUMPKINS BY THE BIN 35.00-125.00, FACE SMALL 30-90, LGE. .55-3.25, GIANT 7.00-22.00; JACK-BE-LITTLE 4.50-8.00 1/2 BU., 9.00-10.00 BU., NECK .25-3.25 EA., PAINTED 2.00-7.50 EA.; TURKS 1 URBAN 1 70-2 25; DISPLAYS 3 50-12.00; STUFFED SCARECROWS 9 00-16.00  
PARSLEY 1 00 BUNCH.  
PEACHES 1 50-13 00 1/2 BU

PEARS: 2.50-7.00 1/2 BU.  
PEPPERS: 1.50-5.50 1/2 BU., 5.00-9.00 BU.; HOT 4.00 1/2 BU., 8.50-10.50 FLAT.  
PICKLES: 5.00 1/2 BU.  
PLUMS: 1.00-8.00 1/2 BU.  
POTATOES: 1.00-3.50 1/2 BU., 3.25-6.50 50 LBS., .50-.70 5 LBS., .65-.90 10 LBS.  
PUMPKINS: NECK .40-1.80 EA.; PIE .55-1.15 EA.  
RASPBERRIES: RED 8.00-17.00 12 PINT FLAT.  
RED BEETS: .60 BUNCH, CUT 4.00-6.50 1/2 BU.  
SQUASH: BUTTERNUT 4.00-5.00 1/2 BU.; ACORN 3.50-5.00 1/2 BU.; SUMMER 2.00-5.00 1/2 BU.  
SWEET CORN: 4.00-11.00 BAG.  
SWEET POTATOES: 1.75-9.00 1/2 BU.  
TOMATOES: CHERRY 1.50-7.50 12 PINT FLAT; 1.00-13.00 25 LBS.  
WATERMELON: .35-1.00 EACH.  
ZUCCHINI: 2.00-5.50 1/2 BU.  
CUT FLOWERS: .80 BUNCH, 2.00-4.00 BUCKET.  
HANGING BASKETS: 1.75 EA.  
MUMS .40-4.50 EACH.  
POTS AND PLANTERS: 25-2.50 EACH.  
ASSORTED SHRUBS 2.00-5.50 EACH  
NEXT WEEK'S SALE DAYS ARE TUESDAY, THURSDAY, FRIDAY AT 9:30; SATURDAY AT 9 WITH HAY AND STRAW.  
NURSERY STOCK AUCTION WED., SEPT. 27 AND OCT. 11 AT 11 A.M.

**Leinbach's Shippensburg Produce Auction**

Shippensburg, PA  
Average Prices Of #1 Produce  
September 14, 15, and 19  
Price Differences are Quality, Size or Days  
Open 10 a.m.  
Report Supplied by Auction  
APPLES: EARLY BAKING 3.00-4.50, OZARK GOLD AND GALA 6.00-9.00; YELLOW AND RED DELICIOUS 4.00-6.75, ALL 1/2 BU.  
BEANS: GREEN AND YELLOW 7.00-12.00; LIMA 10.00-16.00, BOTH 1/2 BU.  
CABBAGE: 5.75-7.50 50 LBS.  
CANTALOPES: SM. TO LGE. .35-1.25.  
CORN: 2.00-2.75 DOZ.  
CUCUMBERS: 5.00-9.00 1/2 BU.  
EGGPLANT: 3.00-6.00 1/2 BU.  
GRAPES: BLUE AND WHITE 5 00-8.00 1/2 BU  
NECTARINES: 5.00-12.00 1/2 BU.  
ORNAMENTALS: PUMPKINS SM. TORLGE 1.00-4 50; BABY PAMS.40-.75; PAINTED PUMPKINS .75-5.00; MIXED GOURDS 5.00-8 50 1/2 BU.; JACK-BE-LITTLES 6.00-9.00 1/2 BU.; GOOSE GOURDS 1.00-1 75; GATOR GOURDS

1.00-2.00; SNAKE GOURDS .50-1.50; DECORATED AND GOOSE AND GATOR GOURDS 4.00-7.00; INDIAN CORN.LGE. .75-1.75 BUNCH, SM. SIZE .50-1.20  
PEACHES: 5.00-8.50 1/2 BU.  
PEARS: RED AND YELLOW 5.00-8.50 1/2 BU.  
PEPPERS: GREEN MED. TO LGE. 8.00-15.00 1 1/9 BU.; RED MED. TO LGE. 10.00-18.00; SUNTAN 8.00-12.00, ALL 1 1/9 BU.; HOT 6.00-9.00 1/2 BU.  
PICKLES: MED. TO LGE. 4.00-8.00 1/2 BU.  
PLUMS: RED AND BLUE 4.00-10.00 1/2 BU.  
POTATOES: 3.00-5.50 1/2 BU., 6.00-7.00 50 LBS. #1.  
RED BEETS: 4.00-7.00 1/2 BU.  
SQUASH: PATTYPAN 3.00-6.00 1/2 BU.  
TOMATOES: MED. TO LGE. 6.00-18.00 25 LBS.; SM. AND MED. 3.00-7.50 25 LBS.; PLUM 2.50-5.00 25 LBS.; CHERRY 2.50-4.50 12 PINTS.  
WATERMELONS: 1.00-3.00 EA.; SEEDLESS .75-2.25.  
ZUCCHINI: GREEN AND YELLOW 6.00-9.50 1/2 BU.  
DRIED FLOWERS: .75-2.00 BUNCH.  
FLOWERS AND SHRUBS: 8" POTS 1.00-4.50  
MUMS. LGE. 3.50-5.00, 8-9" POTS 1.25-2.25, SMALL .65-1.25 EA.  
SALE DAYS TUES., THURS., AND FRI.  
CRAFT SALE WED., SEPT. 27 AT 10 A.M.

**New Jersey Fruit**

BRIDGETON  
SEPTEMBER 18, 1995  
NON-CITRUS FRUITS  
---PEACHES: SUPPLY DECLINING DEMAND MODERATE MARKET ABOUT STEADY Various Yellow flesh varieties mostly Encore, Autumnnglo, Rio-Oso-Gem. USXONE & no grade mark. 3/4 buctns 2 1/2"up 16.00-18.00 mostly 16.00-17.00 few 14.00-15.00. one brand 22.00 one brand 24.00. 2 1/4-2 1/2" 13.00-15.00 mostly 13.00-14.00 few 12.00. one brand 16.00 one brand 18.00. remaining volume in few hands. LAST REPORT.



**PAUL B. ZIMMERMAN INC.**

**AUTOMATIC HEADGATE FINISHED WITH BAKED ON TOP GRADE POLYESTER TGIC POWDER COATING AFTER FABRICATION.**

**FEATURING:**

- Full roof cover for outdoor protection
- Heavy duty latch for positive locking
- Double linkage for extra stability
- Control handle operated from either side
- Fast, easy adjustments to match animal size and neck size from 5" to 7"
- Handle to manually operate for slow or horned cattle

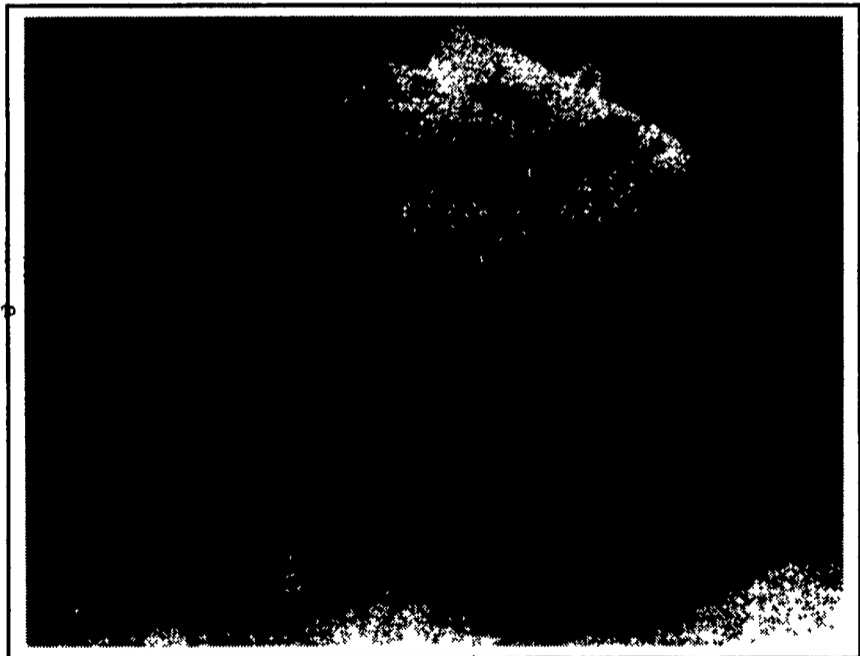
**PAUL B. ZIMMERMAN, INC.**

Call or Write For Additional Information And Your Nearest Dealer

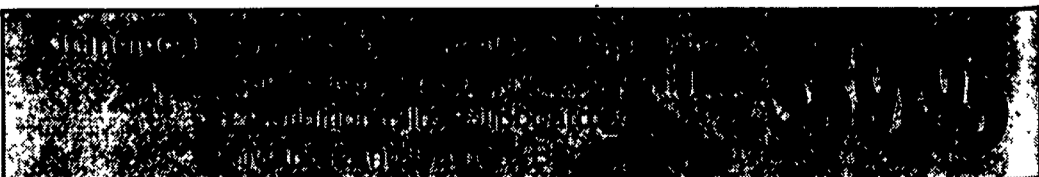
Hours Mon. Thru Fri. 7 to 5

295 Woodcorner Rd. Lititz, PA 17543-9165  
1 Mile West of Ephrata 717-738-7365

**Polaroid Introduces The Animal Documentation Kit**



Developed to streamline identification requirements for registry as part of a partnering arrangement with the Holstein Association. This process provides immediacy and convenience. Photos make identification process accurate, convenient and economical.



The Camera is ideal for indoor and outdoor use giving fully-automatic, focus free capabilities that provide sharp, clear instant photos from infinity in daylight and up to ten feet indoors with flash.

To Order Call Donna Beers at 1(800)336-9672 ext. 7675